

KELLOGG

HIRAM

GLENN

VINE

MILLWOOD

4-1

DAYTON

MUNNELL

MCCORMICK

MH # 5346-426
Reconstruct Manhole
Approx depth = 4.3 ft

MH # 5346-425
Replace Manhole Frame & Cover
Approx depth = 3.3 ft

MH # 5346-424
Reconstruct Manhole
Approx depth = 4.5 ft

Remove and Replace 28 lf
of Pavement
Remove and Replace 18 lf
of Concrete Approach

Remove and Replace 192 lf of 8" Pipe

740

737

812

1802

158'

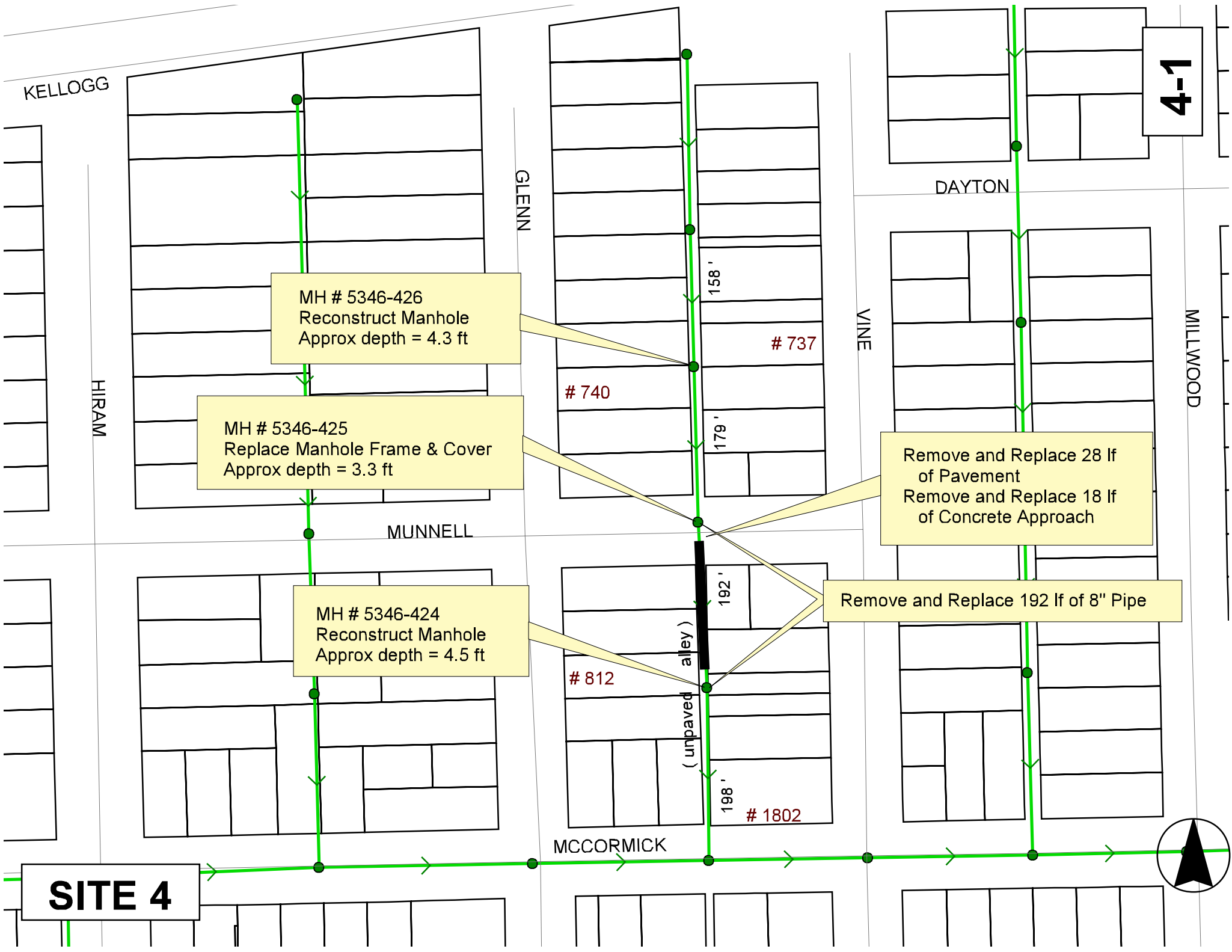
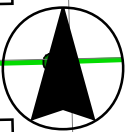
179'

192'

198'

(unpaved alley)

SITE 4



4-2

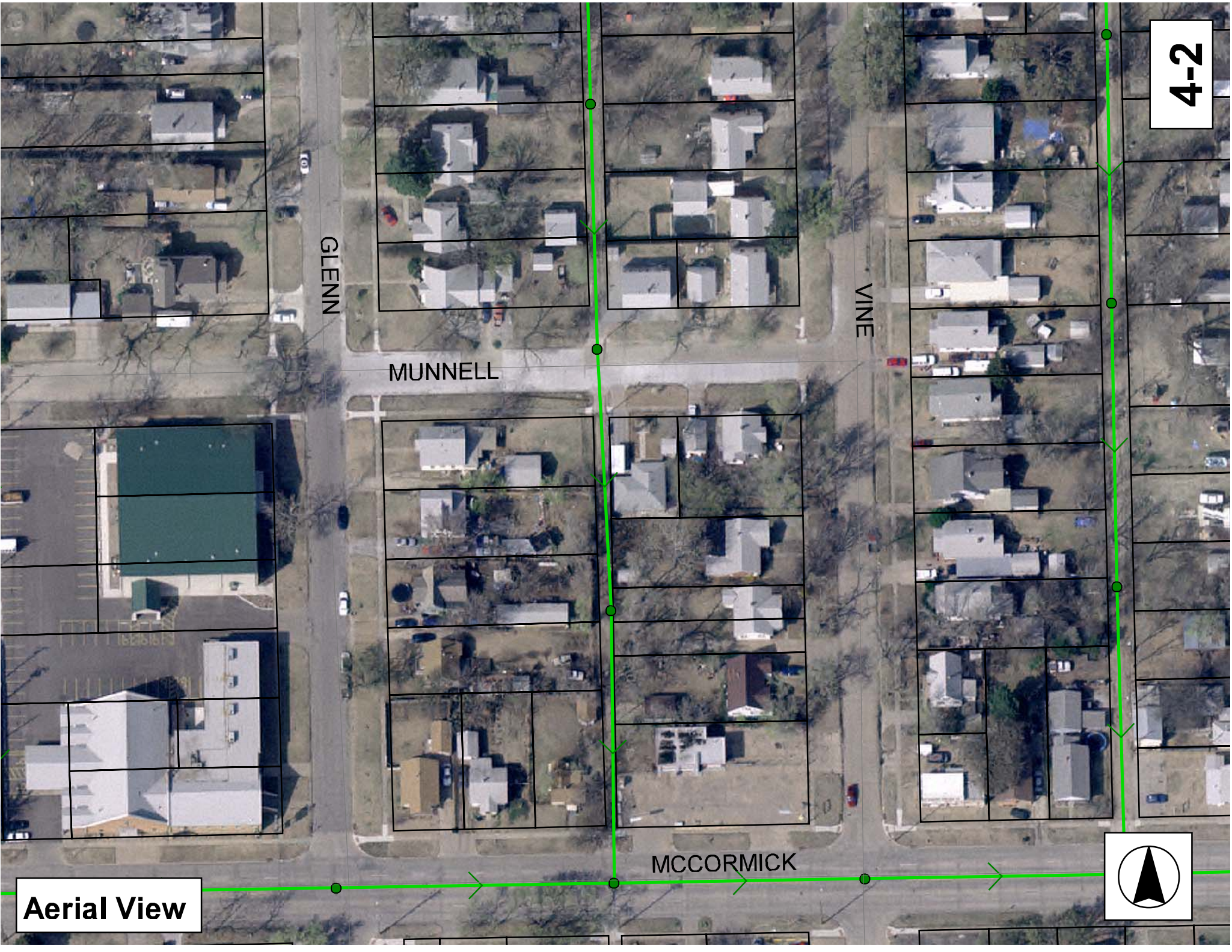
GLENN

MUNNELL

VINE

MCCORMICK

Aerial View



Television Inspection Master Report

7/9/2007
3:28 PM

US Structure: 5346-425
DS Structure: 5346-424

1808 W MUNNELL AVE
912 S GLENN ST

Date Insp: 5/6/2004
Dir Televised: Upstream To Downstream

Basin: C07G

Pipe Information

Shape: Round Length Status: VCP Project No.: B-165
Dia/Ht Width: 8 Material: Index:
Length: 191.2 Slope: 0.099 Surface:

Inspection Information

Crew: 694 Percent Full: 10 Tape ID: V-4352
Weather: Sunny Purpose: TV Existing Line Counter Start:
Surface Cond: N/A Flow: Normal Flow Counter Stop:

Obs. #	VTR Counter Comment	Distance	Location	Description	Rating	Obsrvd (gpm)	Est. (gpm)	Ratings		
								Struct	Clean	Remain (gpm)
1		0.0	US Manhole	5346-425	1	0.000	0	0	0.000	
2		17.1	Crown	Crack-Radial	3	0.004	5	0	0.004	
3		40.9	Crown	Crack-Radial	3	0.004	5	0	0.004	
4		55.7	Invert	Sag begins	2	0.000	2	0	0.000	
5		57.4	West	Wye Service	1	0.000	0	0	0.000	
	SEALED OFF									
6		57.6	Invert	Sag at 40%	3	0.000	5	0	0.000	
7		58.7	Crown	Crack-Radial	3	0.004	5	0	0.004	
8		59.9	East	Break-In Conn	2	0.002	0	0	0.002	
	801 S VINE									
9		60.0	Camera Lens Submerged		4	0.000	0	0	0.000	
	WE WILL USE THE CLEANER AT THIS POINT TO TELEVISE THE LINE									
10		76.0	Camera Lens Submerged	Sag	1	0.000	1	0	0.000	
11		82.0	West	Wye Service	1	0.000	0	0	0.000	
	902 S GLENN									
12		85.0	East	Wye Service	1	0.000	0	0	0.000	
	SEALED OFF									
13		96.0	Camera Lens Emerged	Sag	1	0.000	1	0	0.000	
14		107.0	West	Wye Service	1	0.000	0	0	0.000	
	SEALED OFF									
15		110.0	East	Wye Service	1	0.000	0	0	0.000	
	1809 W MUNNELL									
16		130.0	Invert	Sag ends	1	0.000	1	0	0.000	
17		134.0	West	Wye Service	1	0.000	0	0	0.000	
	904 GLENN									
18		137.0	East	Wye Service	1	0.000	0	0	0.000	
	SEALED OFF									
19		160.0	West	Wye Service	1	0.000	0	0	0.000	
	SEALED OFF									
20		163.0	East	Wye Service	1	0.000	0	0	0.000	
	809 VINE / ROOTS									
21		186.0	West	Break-In Conn	1	0.001	0	0	0.001	
	912 GLENN									
22		189.0	East	Wye Service	1	0.000	0	0	0.000	
	SEALED OFF									
23		192.0	DS Manhole	5346-424	1	0.000	0	0	0.000	
	MANHOLE BOTTOM IN POOR CONDITION									

4-3