

MH # 5246-263

Replace Manhole Frame & Cover
Remove & Replace Manhole Bench & Invert
Approx depth = 5.8 ft

Remove & Replace 24 lf of Pavement
Remove & Replace 14 lf of Concrete Approach (S)

MH # 5246-264

Replace Manhole Frame & Cover
Remove & Replace Manhole Bench & Invert
Approx depth = 6.1 ft

MH # 5246-265

Replace Manhole Frame & Cover
Approx depth = 4.8 ft

Remove & Replace 618 lf of 8" pipe
from MH 5246-265 to MH 5246-263

SITE 5

5-1

SOUTHWEST
BLVD (K-42 HWY)

ST. PAUL

1360 S.
St. Paul

1359 S.
Gordon

MONROE

60'

166'

310' (unpaved alley)

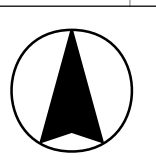
308'

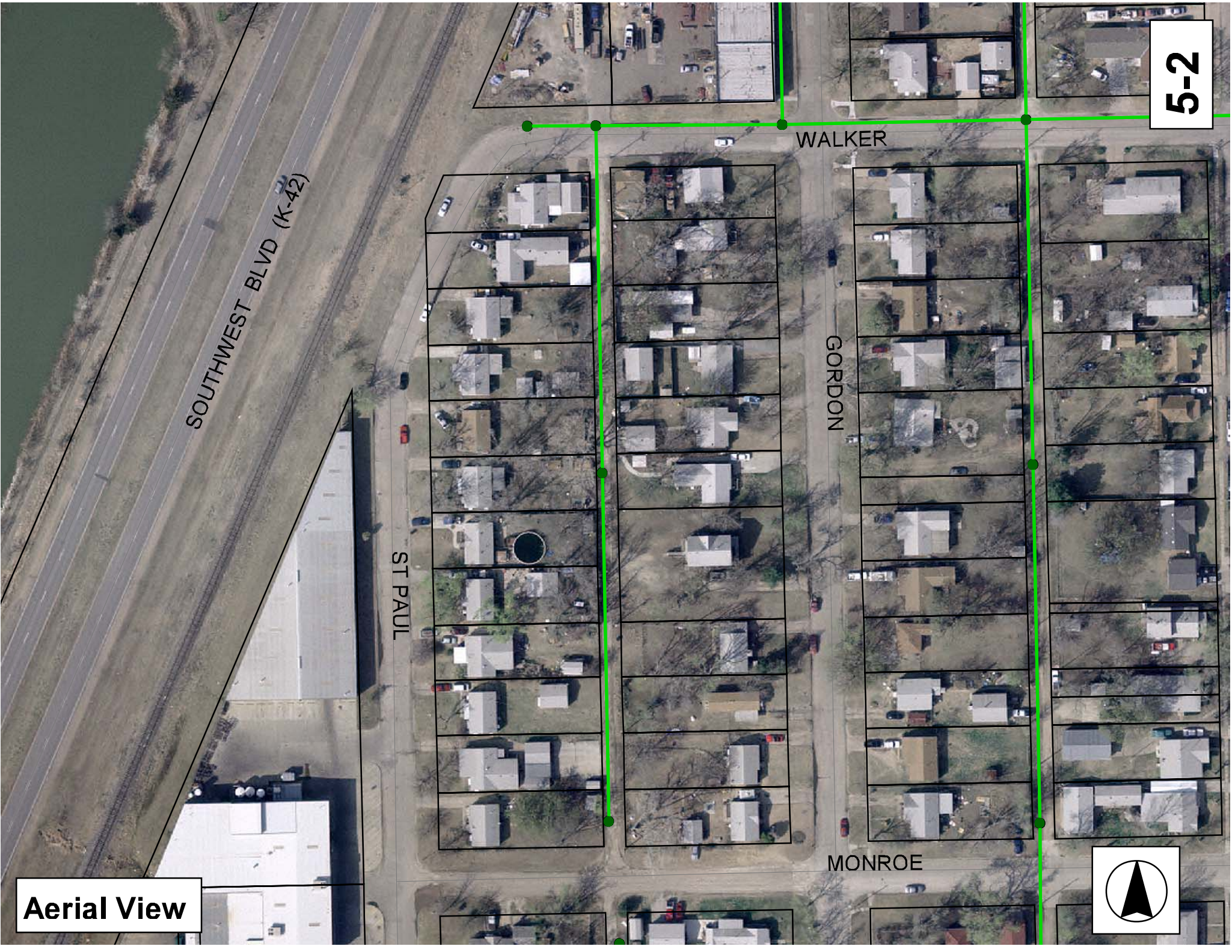
1301 S.
Gordon

WALKER

GORDON

EDWARDS





SOUTHWEST BLVD (K-42)

ST PAUL

WALKER

GORDON

MONROE

5-2

Aerial View



Television Inspection Master Report

5/1/2007
12:10 PM

US Structure: 5246-265
DS Structure: 5246-264

1357 S GORDON AVE
1319 S GORDON AVE

Date Insp: 1/24/2006
Dir Televised: Upstream To Downstream

Basin: C07E

Pipe Information

Project No.: G-170 Dia: 8" Material: VCP Length: 310.0 Slope: 0.100

Inspection Information

Crew: 692 Percent Full: 10 Tape ID: 4998
Weather: Sunny Purpose: TV Existing Line Counter Start: 0
Surface Cond: N/A Flow: Normal Flow Counter Stop: 19.21

| Obs. # | VTR | Counter | Distance | Location | Description | Rating | Obsrvd (gpm) | Est. (gpm) | Ratings Struct | Clean | Remain (gpm) |
|--------|-----|---------|----------|-----------------------|---------------|--------|--------------|------------|----------------|-------|--------------|
| 1 | | | 0.0 | US Manhole | 5246-265 | 1 | | 0.000 | 0 | 0 | 0.000 |
| 2 | | | 2.0 | Crown | Broken Pipe | 2 | | 0.008 | 44 | 0 | 0.008 |
| 3 | | | 22.0 | West | Wye Service | 2 | | 0.000 | 0 | 0 | 0.000 |
| 4 | | | 25.0 | East | Wye Service | 2 | | 0.000 | 0 | 0 | 0.000 |
| 5 | | | 25.0 | Camera Lens Emerged | | 1 | | 0.000 | 0 | 0 | 0.000 |
| 6 | | | 38.0 | Joint | Roots | 2 | | 0.004 | 2 | 4 | 0.004 |
| 7 | | | 47.0 | Joint | Roots | 2 | | 0.004 | 2 | 4 | 0.004 |
| 8 | | | 51.0 | Camera Lens Submerged | | 5 | | 0.000 | 0 | 0 | 0.000 |
| 9 | | | 56.0 | Joint | Roots | 2 | | 0.004 | 2 | 4 | 0.004 |
| 10 | | | 69.0 | West | Wye Service | 1 | | 0.000 | 0 | 0 | 0.000 |
| 11 | | | 72.0 | East | Wye Service | 1 | | 0.000 | 0 | 0 | 0.000 |
| 12 | | | 73.0 | East | Break-In Conn | 1 | | 0.001 | 0 | 0 | 0.001 |
| 13 | | | 75.0 | West | Wye Service | 2 | | 0.000 | 0 | 0 | 0.000 |
| 14 | | | 119.0 | West | Wye Service | 2 | | 0.000 | 0 | 0 | 0.000 |
| 15 | | | 122.0 | East | Wye Service | 2 | | 0.000 | 0 | 0 | 0.000 |
| 16 | | | 139.0 | Camera Lens Emerged | | 1 | | 0.000 | 0 | 0 | 0.000 |
| 17 | | | 156.0 | Camera Lens Submerged | | 5 | | 0.000 | 0 | 0 | 0.000 |
| 18 | | | 167.0 | Camera Lens Emerged | | 1 | | 0.000 | 0 | 0 | 0.000 |
| 19 | | | 169.0 | West | Wye Service | 2 | | 0.000 | 0 | 0 | 0.000 |
| 20 | | | 172.0 | West | Wye Service | 2 | | 0.000 | 0 | 0 | 0.000 |
| 21 | | | 182.0 | Camera Lens Submerged | | 5 | | 0.000 | 0 | 0 | 0.000 |
| 22 | | | 216.0 | West | Wye Service | 2 | | 0.000 | 0 | 0 | 0.000 |
| 23 | | | 258.0 | Camera Lens Submerged | | 5 | | 0.000 | 0 | 0 | 0.000 |
| 24 | | | 266.0 | West | Wye Service | 1 | | 0.000 | 0 | 0 | 0.000 |
| 25 | | | 269.0 | East | Wye Service | 1 | | 0.000 | 0 | 0 | 0.000 |
| 26 | | | 308.0 | DS Manhole | 5246-264 | | | | | | |

(LINE IS MOSTLY UNDER WATER / POOR GRADE / TV'D A SECOND TIME, USING CLEANER IN ORDER TO SEE)

5-3

Television Inspection Master Report

5/1/2007
12:10 PM

US Structure: 5246-264
DS Structure: 5246-263

1319 S GORDON AVE
1145 S GORDON AVE

Date Insp: 1/24/2006
Dir Televised: Upstream To Downstream

Basin: C07E

Pipe Information

Project No.: G-170 Dia: 8" Material: VCP Length: 308.0 Slope: 0.100 Tape ID: 4998

| Obs. # | VTR Counter Comment | Distance | Location | Description | Rating | Obsrvd (gpm) | Est. (gpm) | Ratings | | |
|---|---------------------|----------|----------------------|------------------------------|--------|--------------|------------|---------|-------|--------------|
| | | | | | | | | Struct | Clean | Remain (gpm) |
| 1 | | 0.0 | US Manhole | 5246-264 | 1 | 0.000 | 0 | 0 | 0.000 | |
| 2 | | 7.0 | Joint | Roots | 2 | 0.004 | 2 | 4 | 0.004 | |
| 3 | | 12.0 | West | Wye Service | 1 | 0.000 | 0 | 0 | 0.000 | |
| 1330 S. St.Paul - (silt in the line at this area) | | | | | | | | | | |
| 4 | | 13.0 | Joint | Roots | 2 | 0.004 | 2 | 4 | 0.004 | |
| 5 | | 15.0 | East | Break-In Conn | 1 | 0.001 | 0 | 0 | 0.001 | |
| 1329 S. Gordon - | | | | | | | | | | |
| 6 | | 16.0 | Joint | Roots | 2 | 0.004 | 2 | 4 | 0.004 | |
| 7 | | 25.0 | Joint | Roots | 3 | 0.008 | 5 | 8 | 0.008 | |
| 8 | | 67.0 | West | Wye Service | 2 | 0.000 | 0 | 0 | 0.000 | |
| 1322 S. St. Paul - | | | | | | | | | | |
| 9 | | 70.0 | East | Wye Service | 2 | 0.000 | 0 | 0 | 0.000 | |
| 1321 S. Gordon - | | | | | | | | | | |
| 10 | | 82.0 | East | Break-In Conn | 2 | 0.002 | 0 | 0 | 0.002 | |
| 1321 S. Gordon - | | | | | | | | | | |
| 11 | | 93.0 | East | Break-In Conn | 2 | 0.002 | 0 | 0 | 0.002 | |
| 1319 S. Gordon - | | | | | | | | | | |
| 12 | | 110.0 | Joint | Roots | 2 | 0.004 | 2 | 4 | 0.004 | |
| 13 | | 111.0 | West | Wye Service | 1 | 0.000 | 0 | 0 | 0.000 | |
| 1316 S. St.Paul - | | | | | | | | | | |
| 14 | | 115.0 | Ball of Roots in Wye | Possibly Sealed Off Wye East | | 0.000 | 0 | 0 | 0.000 | |
| 15 | | 133.0 | East | Break-In Conn | 1 | 0.001 | 0 | 0 | 0.001 | |
| 1315 S. Gordon - | | | | | | | | | | |
| 16 | | 139.0 | Joint | Roots | 2 | 0.004 | 2 | 4 | 0.004 | |
| 17 | | 143.0 | Joint | Roots | 2 | 0.004 | 2 | 4 | 0.004 | |
| 18 | | 145.0 | Joint | Roots | 2 | 0.004 | 2 | 4 | 0.004 | |
| 19 | | 148.0 | Joint | Roots | 2 | 0.004 | 2 | 4 | 0.004 | |
| 20 | | 151.0 | Joint | Roots | 2 | 0.004 | 2 | 4 | 0.004 | |
| 21 | | 154.0 | Joint | Roots | 3 | 0.008 | 5 | 8 | 0.008 | |
| 22 | | 157.0 | Joint | Roots | 2 | 0.004 | 2 | 4 | 0.004 | |
| 23 | | 160.0 | Joint | Roots | 3 | 0.008 | 5 | 8 | 0.008 | |
| 24 | | 165.0 | Ball of Roots in Wye | Possibly Sealed Off Wye East | | 0.000 | 0 | 0 | 0.000 | |
| 25 | | 166.0 | Joint | Offset | 3 | 0.010 | 20 | 0 | 0.010 | |
| 26 | | 168.0 | West | Wye Service | 2 | 0.000 | 0 | 0 | 0.000 | |
| 1312 S. St.Paul - Roots | | | | | | | | | | |
| 27 | | 169.0 | Joint | Roots | 2 | 0.004 | 2 | 4 | 0.004 | |
| 28 | | 171.0 | Ball of Roots in Wye | Possibly Sealed Off Wye East | | 0.000 | 0 | 0 | 0.000 | |
| 29 | | 177.0 | Ball of Roots in Wye | Possibly Sealed Off Wye East | | 0.000 | 0 | 0 | 0.000 | |
| 30 | | 214.0 | West | Wye Service | 2 | 0.000 | 0 | 0 | 0.000 | |
| 1306 S. St.Paul - FULL OF ROOTS | | | | | | | | | | |
| 31 | | 217.0 | East | Wye Service | 2 | 0.000 | 0 | 0 | 0.000 | |
| 1311 S. Gordon - | | | | | | | | | | |
| 32 | | 237.0 | East | Break-In Conn | 2 | 0.002 | 0 | 0 | 0.002 | |
| 1301 S. Gordon - | | | | | | | | | | |
| 33 | | 250.0 | West | Wye Service | 1 | 0.000 | 0 | 0 | 0.000 | |
| 1302 S. St.Paul - | | | | | | | | | | |
| 34 | | 252.0 | East | Wye Service | 2 | 0.000 | 0 | 0 | 0.000 | |
| 1301 S. St.Paul - | | | | | | | | | | |
| 35 | | 305.0 | DS Manhole | 5246-263 | | | | | | |

5-4