

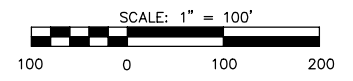
FINAL PLAT

PINE MEADOW SECOND ADDITION

AN ADDITION TO WICHITA, SEDGWICK COUNTY, KANSAS

NW COR., NW 1/4 SEC. 15,
T27S, R2E, 6TH P.M.
FOUND 5/8" REBAR AND
GARBER CAP

NE COR., NW 1/4 SEC. 15,
T27S, R2E, 6TH P.M.
5/8" SMOOTH BAR



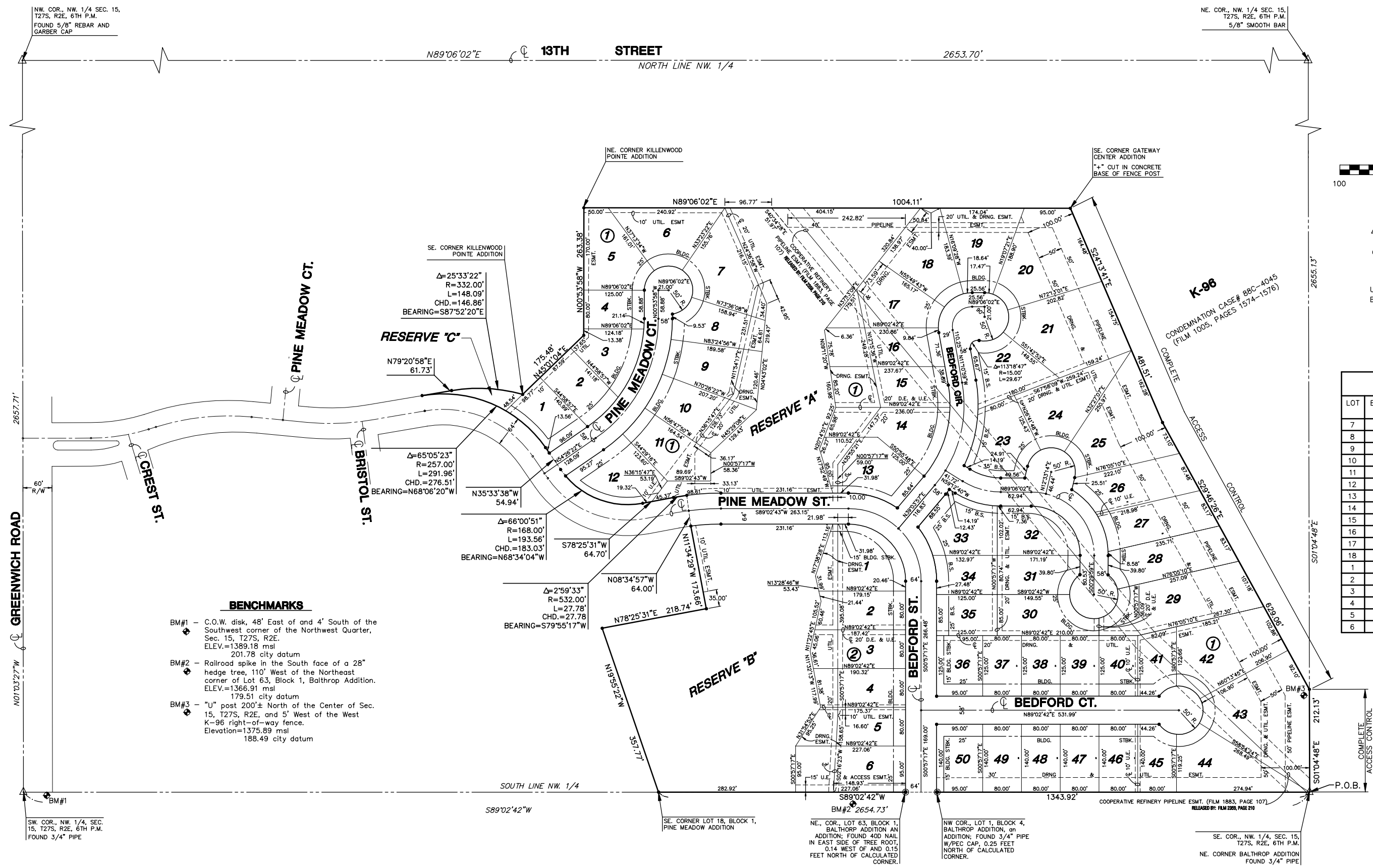
LEGEND

- △ = SECTION CORNER MONUMENT FOUND
- = FOUND PROPERTY CORNER REBAR
- = SET 5/8" REBAR W/ MKEC CLS #39 CAP
- U.E. = UTILITY EASEMENT
- B.S. = BUILDING SETBACK

MINIMUM PAD ELEVATIONS (LOWEST OPENINGS)			
LOT	BLOCK	ELEVATION (CITY DATUM)	ELEVATION (USGS)
7	1	186.8	1374.2
8	1	186.8	1374.2
9	1	186.8	1374.2
10	1	186.8	1374.2
11	1	186.8	1374.2
12	1	186.8	1374.2
13	1	186.8	1374.2
14	1	186.8	1374.2
15	1	186.8	1374.2
16	1	186.8	1374.2
17	1	186.8	1374.2
18	1	186.8	1374.2
1	2	182.3	1369.7
2	2	182.3	1369.7
3	2	182.3	1369.7
4	2	182.3	1369.7
5	2	182.3	1369.7
6	2	182.3	1369.7

BENCHMARKS

- BM#1 - C.O.W. disk, 48" East of and 4' South of the Southwest corner of the Northwest Quarter, Sec. 15, T27S, R2E. ELEV.=1389.18 msl
201.78 city datum
- BM#2 - Railroad spike in the South face of a 28" hedge tree, 110' West of the Northeast corner of Lot 63, Block 1, Bathrop Addition. ELEV.=1366.91 msl
179.51 city datum
- BM#3 - "U" post 200± North of the Center of Sec. 15, T27S, R2E, and 5' West of the West K-96 right-of-way fence. Elevation=1375.89 msl
188.49 city datum



COOPERATIVE REFINERY PIPELINE ESMT. (FILM 1883, PAGE 107)
RELEASED BY: FILM 2289, PAGE 210

SW COR., NW 1/4 SEC. 15,
T27S, R2E, 6TH P.M.
FOUND 3/4" PIPE

SE CORNER LOT 18, BLOCK 1,
PINE MEADOW ADDITION

NE COR., LOT 63, BLOCK 1,
BALTHROP ADDITION AN
ADDITION: FOUND 400 NAIL
IN EAST SIDE OF TREE ROOT,
0.14 WEST OF AND 0.15
FEET NORTH OF CALCULATED
CORNER.

NW COR., LOT 1, BLOCK 4,
BALTHROP ADDITION, on
ADDITION: FOUND 3/4" PIPE
W/PEC CAP, 0.25 FEET
NORTH OF CALCULATED
CORNER.

SE COR., NW 1/4 SEC. 15,
T27S, R2E, 6TH P.M.
NE CORNER BALTHROP ADDITION
FOUND 3/4" PIPE