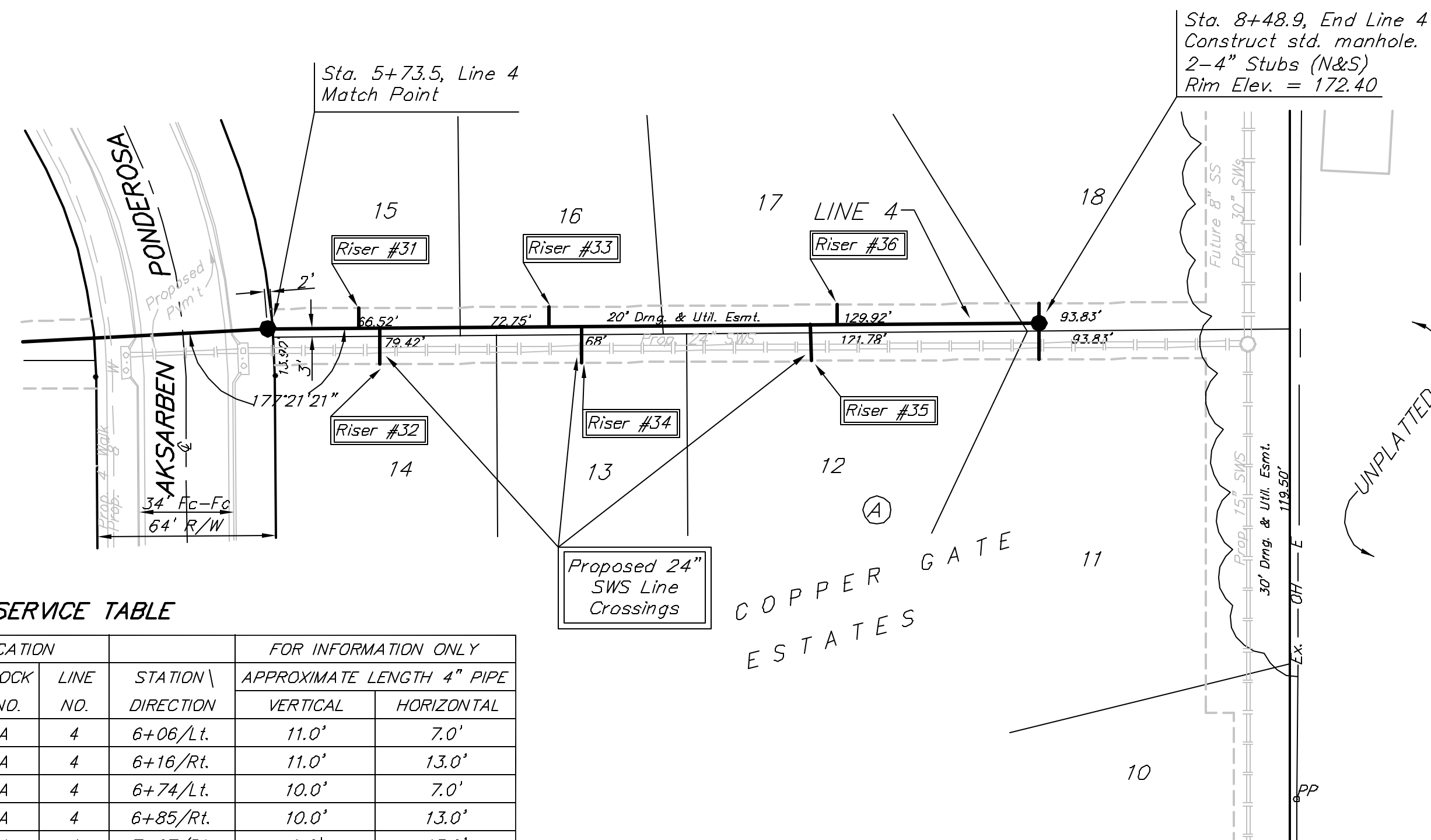


BENCHMARK:
City of Wichita benchmark at
the SE corner of intersection
of 135th Street West and 13th
Street North.
Elev. = 167.83 (City Datum)

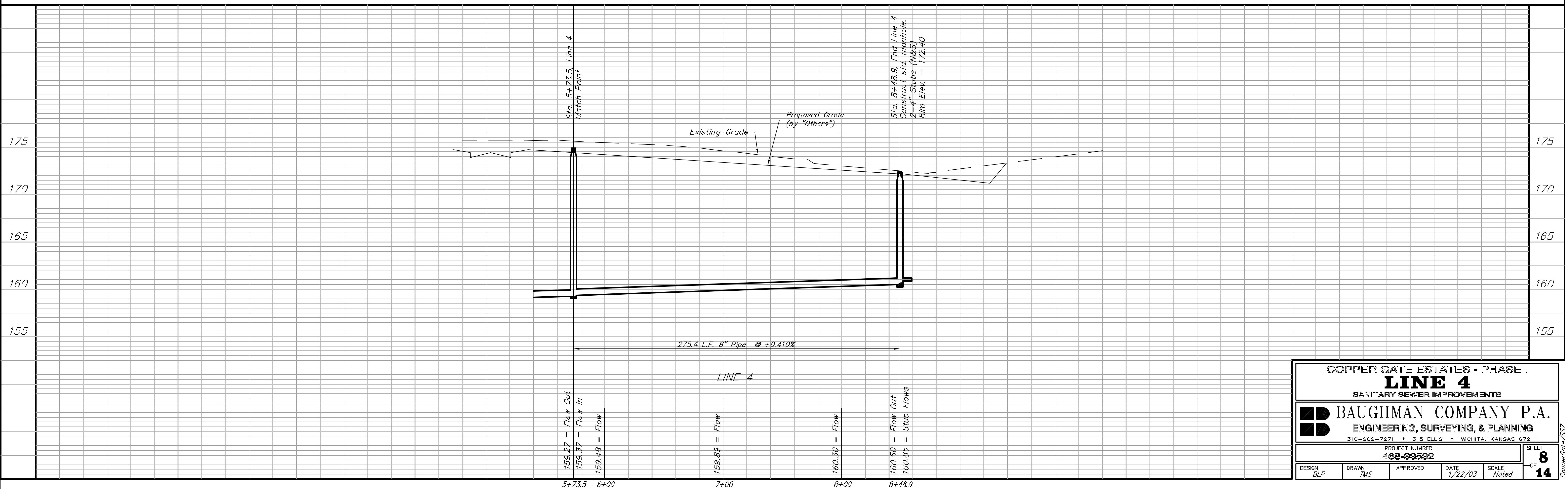


Scale: 1" = 40' Horizontal
1" = 5' Vertical
• = Iron

SEWER SERVICE TABLE

NUMBER	TYPE	LOCATION				FOR INFORMATION ONLY	
		LOT NO.	BLOCK NO.	LINE NO.	STATION \ DIRECTION	APPROXIMATE LENGTH 4" PIPE	
31	8" X 4" Tee Saddle	15	A	4	6+06/Lt.	11.0'	7.0'
32	8" X 4" Tee Saddle	14	A	4	6+16/Rt.	11.0'	13.0'
33	8" X 4" Tee Saddle	16	A	4	6+74/Lt.	10.0'	7.0'
34	8" X 4" Tee Saddle	13	A	4	6+85/Rt.	10.0'	13.0'
35	8" X 4" Tee Saddle	12	A	4	7+67/Rt.	9.0'	13.0'
36	8" X 4" Tee Saddle	17	A	4	7+77/Lt.	9.0'	7.0'

NOTE: Vertical Riser Pipe shall be extended to 2' minimum above ground water elevation and 4' maximum below proposed ground elevation.



COPPER GATE ESTATES - PHASE I
LINE 4
SANITARY SEWER IMPROVEMENTS

BAUGHMAN COMPANY P.A.
ENGINEERING, SURVEYING, & PLANNING
318-262-7271 • 315 ELLIS • WICHITA, KANSAS 67211

PROJECT NUMBER
488-93532

DESIGN BLP DRAWN TMS APPROVED DATE 1/22/03 SCALE Noted

SHEET **8** OF **14**