

## GENERAL NOTES:

- Contractor will be required to provide notice to utility companies a minimum of forty-eight (48) hours prior to any excavation, as follows:

Kansas One-Call 687-2470

The Contractor must notify the following in case of an emergency:

Cox Communications	262-4270
Kansas Gas Service	1-888-482-4950
Westar Energy	383-8650
Aquila Energy	1-888-482-4950
SBC	268-2245
City of Wichita Water Dept.	268-4563
City of Wichita Sewer Maint.	268-4024
City of Wichita Storm Sewer Maint.	268-4090
City of Wichita Traffic Maint.	268-4034
Conoco Pipeline Co.	1-800-231-2551
Southern Star Pipeline Co.	529-6600
Phillips Pipeline Co.	1-800-766-8230
Jayhawk Pipeline Co.	1-888-542-9575

- Underground utility service lines and overhead utility pole lines are to be adjusted as necessary by others prior to construction unless the plans specifically call for their adjustment by the Contractor or unless the plans specifically identify a utility to be adjusted by its owner during construction. Existing utilities and their location, as shown on the plans, represent the best information obtainable for design. The Contractor will be required to work around existing utilities within the right-of-way which do not conflict with proposed construction.
- Trees and shrubs in public right-of-way which are in direct conflict with proposed new construction shall be removed by the Contractor with the Engineer's approval. Trees and shrubs which are not in direct conflict with proposed new construction shall be saved and protected from damage.
- The Contractor shall give all property owners and/or tenants of developed property abutting the construction of this project a minimum of ten (10) days advance notice prior to start of construction.
- The Contractor shall be responsible for preserving property irons. The Contractor will be required to re-establish any property irons which are damaged or destroyed by his construction operations. Such irons shall be re-established by a licensed land surveyor in accordance with state laws.
- All excavation & trenching material shall be stockpiled or spread out on site as determined by the Engineer.
- All existing and proposed erosion control measures including silt fencing, erosion control mat, straw bales, inlet barriers, and const. entrance shall be maintained throughout construction by the contractor and until project is accepted by the City of Wichita. The on-site engineer shall complete weekly reports on the status of erosion control measures. The contractor shall be required to comply with maintenance and/or replacement of erosion control measures as determined by the on-site engineer until project is accepted by City of Wichita. Maintenance and/or replacement of erosion control measures to be paid by L.S. bid item "Site Clearing & Restoration"

- All of Reserve "B" & "C" above the static water surface and within Maize Rd. R/W shall be seeded and mulched as follows: (Permanent Seeding)

SEED -- Kansas Premium Fescue Blend;  
8#/1000 Sq. Ft.  
FERTILIZER -- 12-24-12 Ratio at 350 Lbs./Ac.  
MULCH -- 2 Tons Prairie Hay / Acre

All other disturbed areas not in street R/W are to be seeded as follows: (Temporary Seeding)

SEED -- Rye grass (PLS) -- 5#/1000 Sq. Ft. and  
Kansas Premium Fescue Blend; 5#/1000 Sq. Ft.

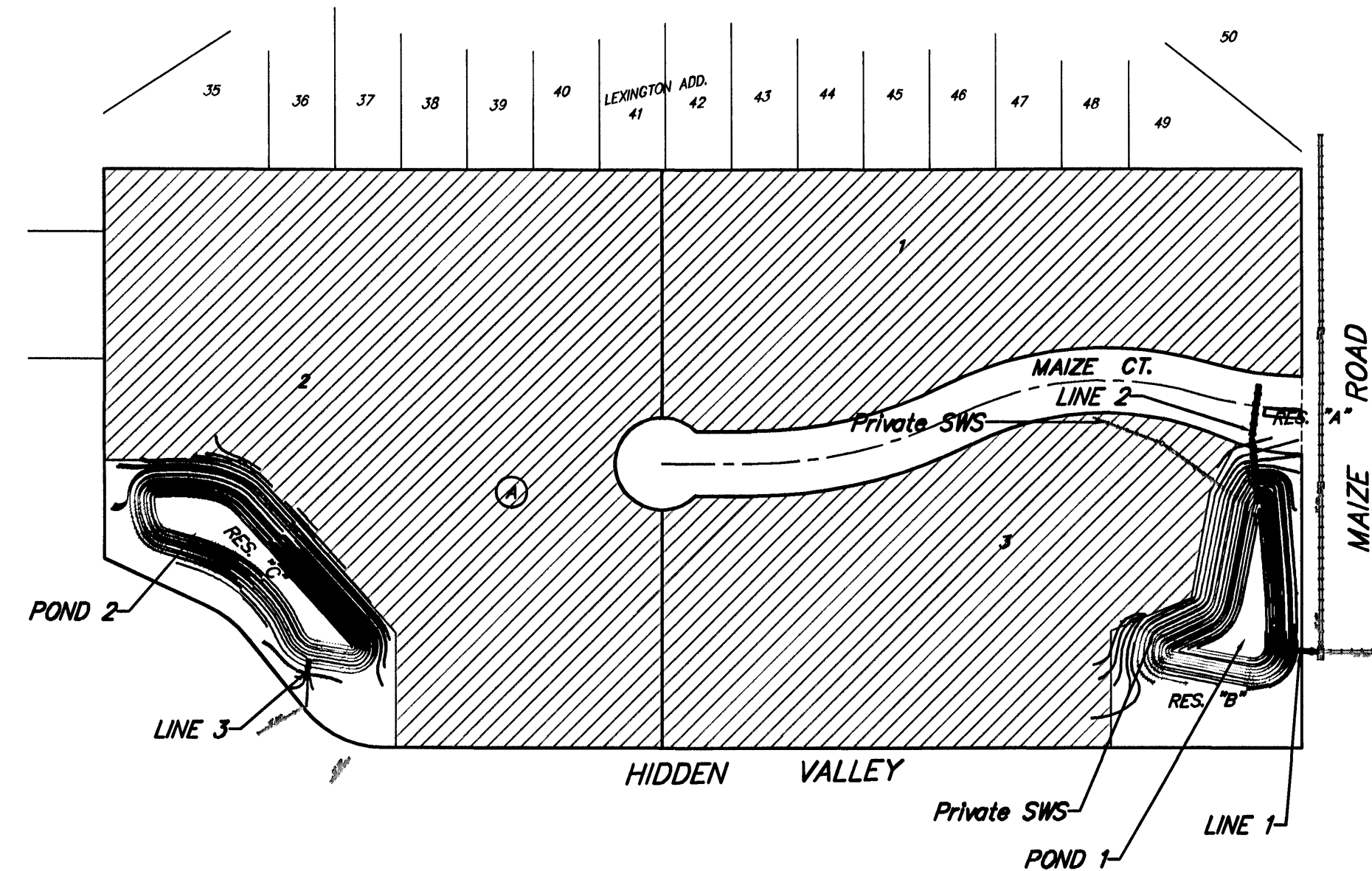
Contractor shall prepare ground per City Specifications. All seeding operations shall conform to City of Wichita Standard Specifications. All cost associated with seeding, mulching, and fertilizing shall be included in bid item "Project Seeding".

- The developer for this project is Matt Lillie, and may be contacted at (316) 773-1313.

- Rubble from the removal of miscellaneous structures and excess excavation which is to be wasted shall be disposed of on sites to be provided by the Contractor. These sites shall be approved by the Engineer as to suitability, appearance and site location. Locations, in the opinion of the Engineer, that will leave an unsightly appearance will not be approved. All disposal sites must be approved by the Kansas Department of Health and Environment. Material either stockpiled or disposed of in a flood plain would require a Kansas State Board of Agriculture permit. Any material dumped in waters of the United States or wetlands is subject to U.S. Corps of Engineers permitting regulations. Any material buried or stockpiled beyond approved construction limits would require additional archaeological investigations unless buried in a previously approved borrow location.

# STORM WATER DRAIN #298 to serve **LILLIE 2ND ADDITION** CITY OF WICHITA, KANSAS

James L. Armour, P.E. City Engineer  
Project Number  
468-84208  
O.C.A. Number  
751432



## Benchmarks

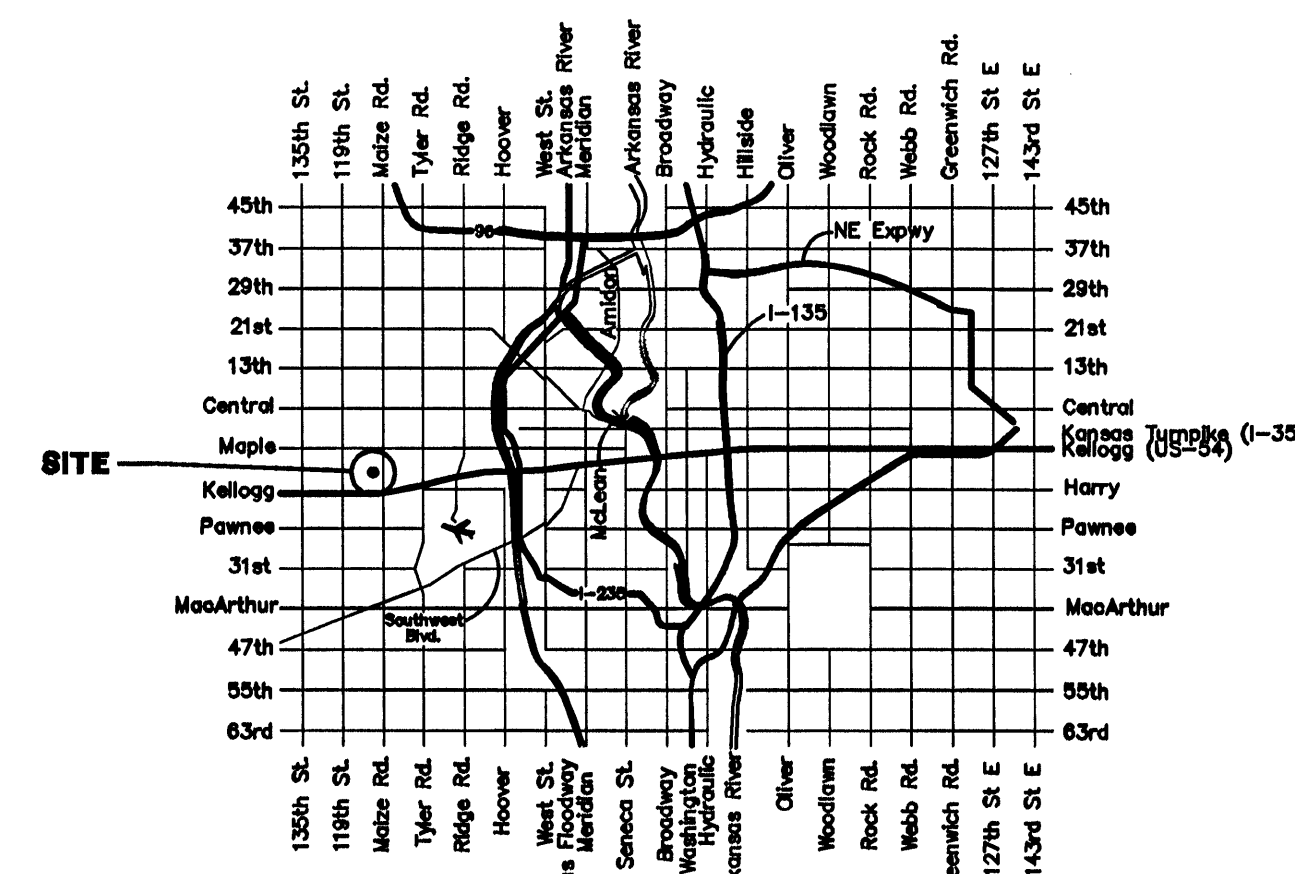
City Disc - Maize Road & McCormick  
(Hidden Valley) 0.5 Mi. South of Maple  
on the NE Corner of R.C.B.C Over  
Cowskin Creek, South of Hidden Valley  
Elev. = 1318.93 City Datum (1318.93  
NGVD29)

Scale: 1" = 150'

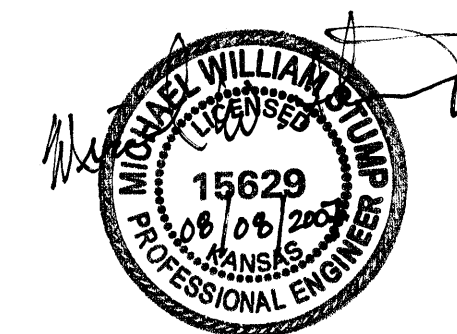
## Sheet Index

Title Sheet	1
Lines 1 & 2	2
Line 3	3
Pond 1	4
Pond 2	5
Mass Grading Plan	6
Type 1-A Double Inlet Detail	7
24" RC Headwall Detail	8
Erosion Control Plan	9
Erosion Control Details	10-13
Coordinate Sheet	14
Copy of Plat	15

Benefit District



Vicinity Map



Baughman Company, P.A. 315 Ellis St. Wichita, KS 67211 P 316-262-7271 F 316-262-0149  
ENGINEERING | SURVEYING | PLANNING | LANDSCAPE ARCHITECTURE