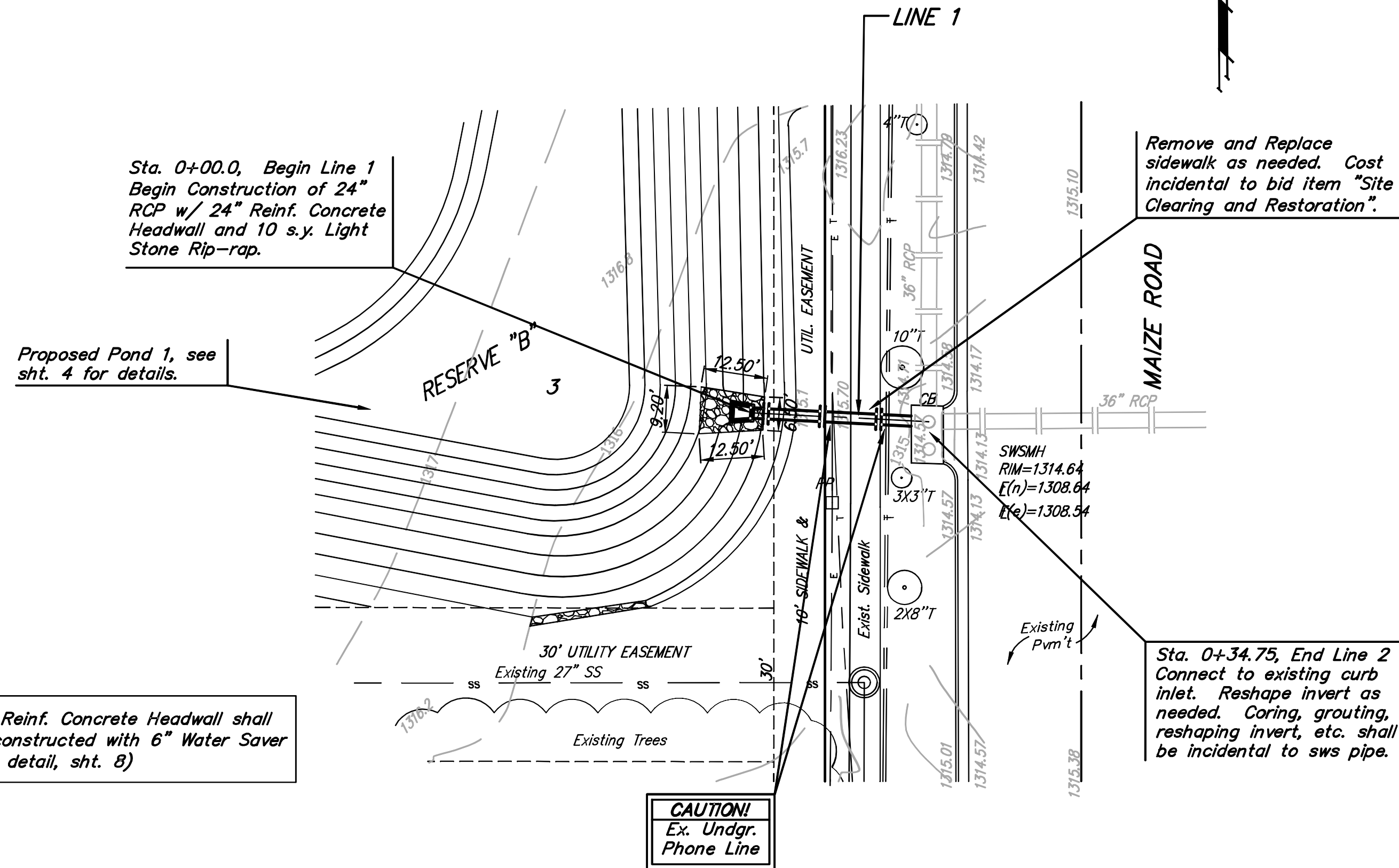
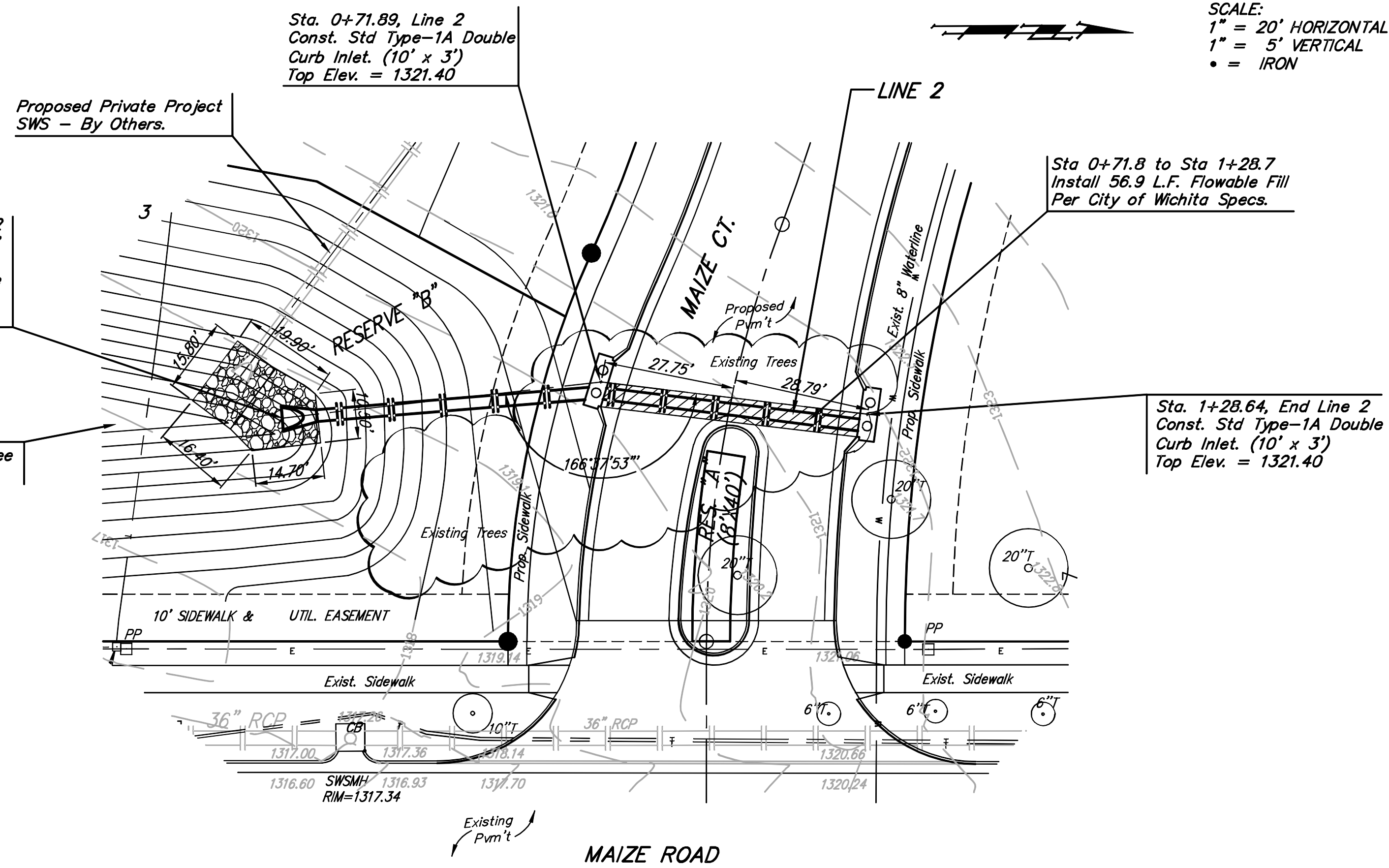


BENCHMARK:
 City Disc - Maize Road & McCormick
 (Hidden Valley) 0.5 Mi. South of Maple
 on the NE Corner of R.C.B.C Over
 Cowskin Creek, South of Hidden Valley
 Elev. = 1318.93 City Datum (1318.93
 NGVD29)

SCALE:
 1" = 20' HORIZONTAL
 1" = 5' VERTICAL
 • = IRON



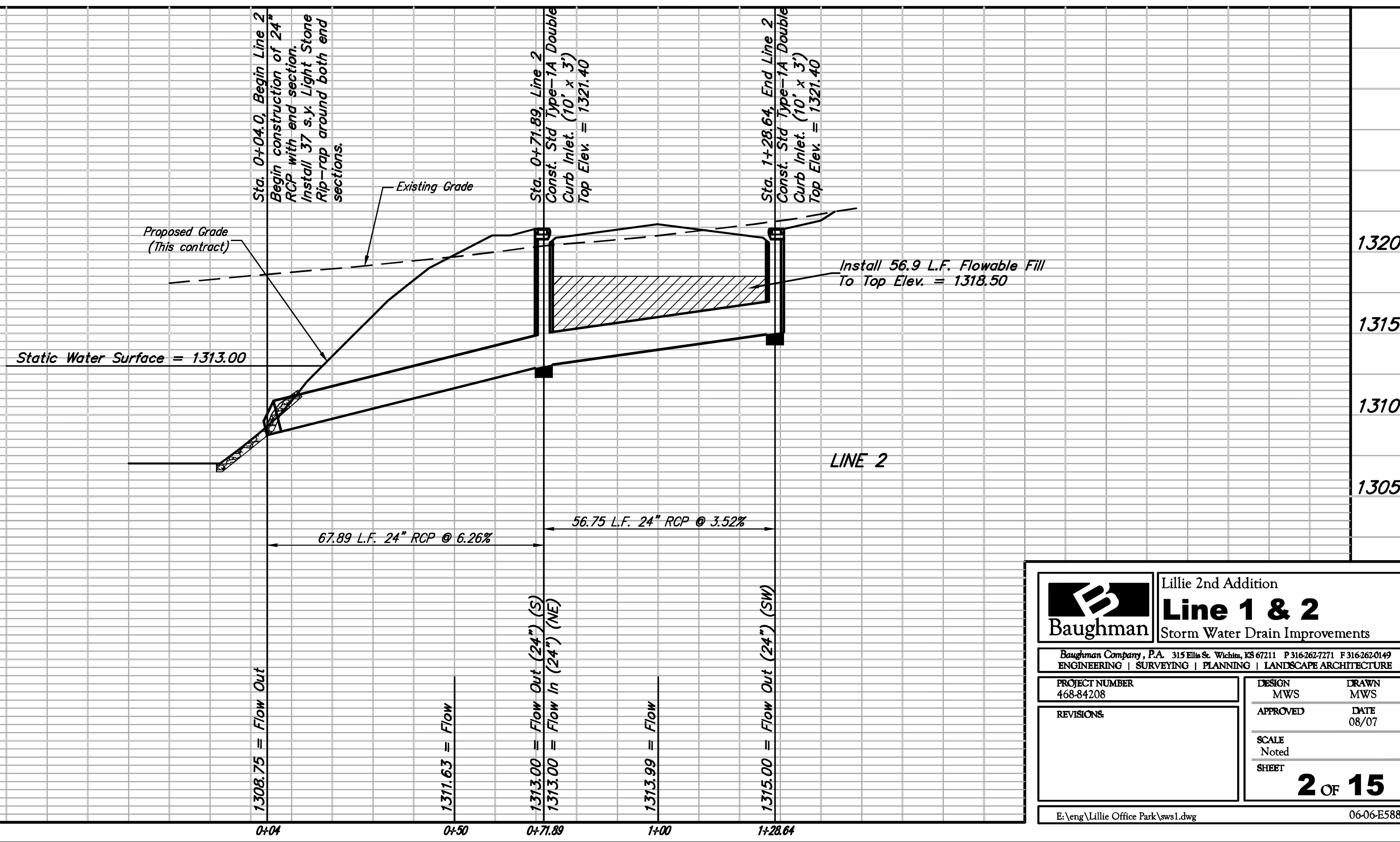
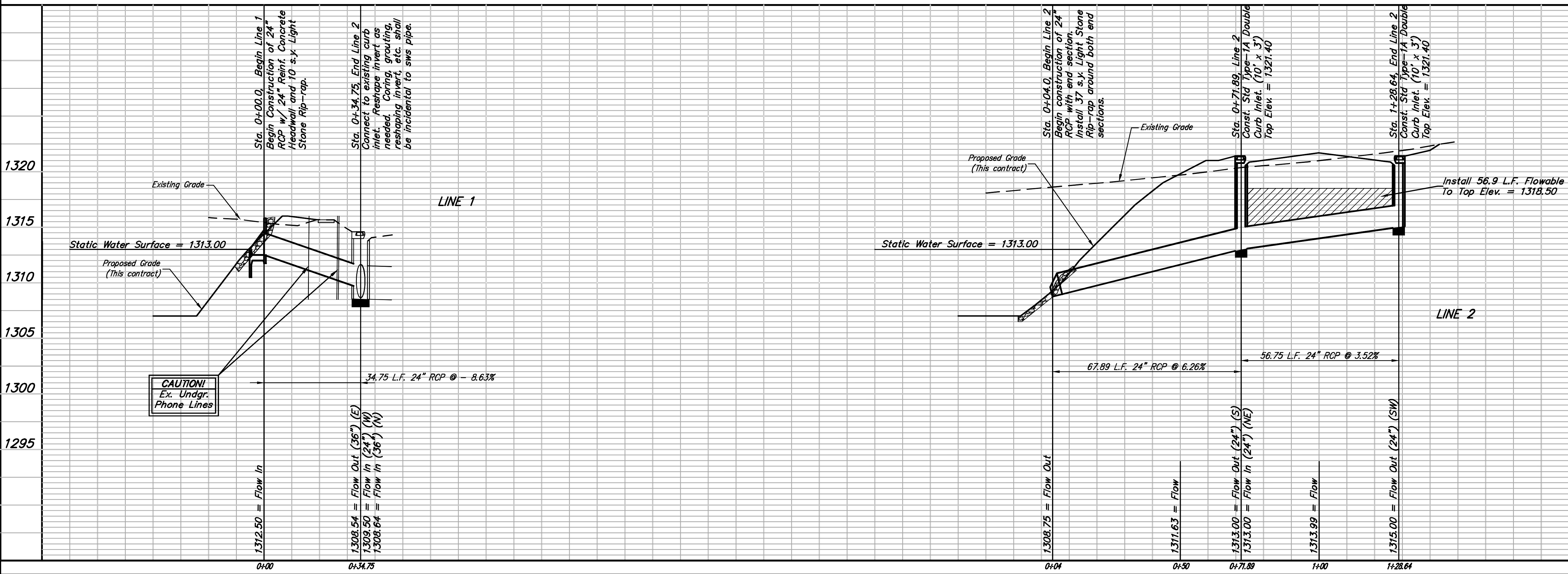
Sta. 0+04.0, Begin Line 2
 Begin construction of 24"
 RCP with end section.
 Install 37 s.y. Light Stone
 Rip-rap around both end
 sections.



Sta 0+71.8 to Sta 1+28.7
 Install 56.9 L.F. Flowable Fill
 Per City of Wichita Specs.

Sta. 1+28.64, End Line 2
 Const. Std Type-1A Double
 Curb Inlet. (10' x 3')
 Top Elev. = 1321.40

Sta. 0+34.75, End Line 2
 Connect to existing curb
 inlet. Reshape invert as
 needed. Coring, grouting,
 reshaping invert, etc. shall
 be incidental to sws pipe.



		Lillie 2nd Addition	
		Line 1 & 2	
Storm Water Drain Improvements		Baughman Company, P.A. 315 Ellis St. Wichita, KS 67211 P 316-262-7271 F 316-262-0149 ENGINEERING SURVEYING PLANNING LANDSCAPE ARCHITECTURE	
PROJECT NUMBER 468-84208	DESIGN MWS	DRAWN MWS	APPROVED DATE 08/07
REVISIONS:	SCALE Noted		SHEET
		2 OF 15	
E:\eng\Lillie Office Park\sws1.dwg		06-06-E588	