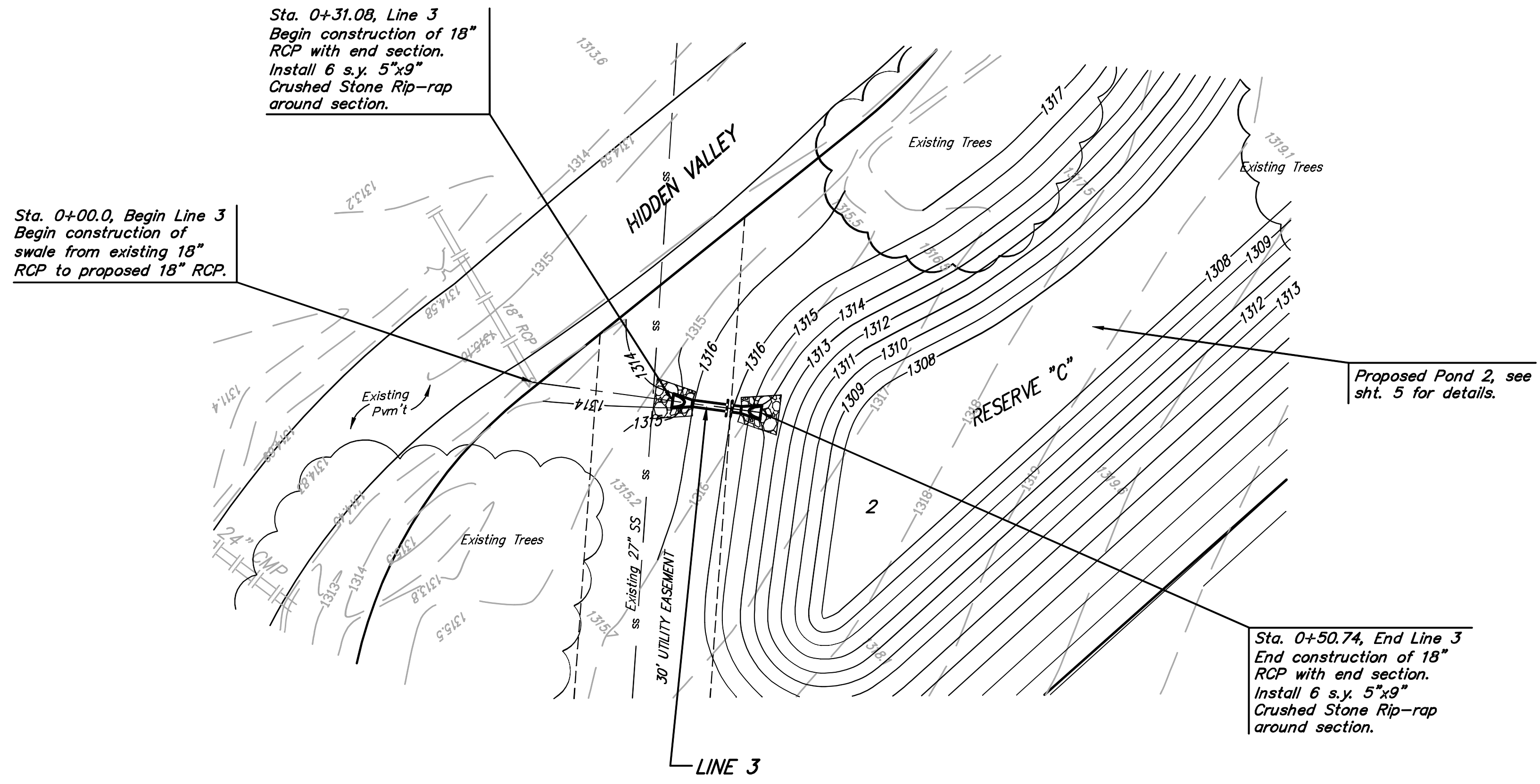


BENCHMARK:
 City Disc - Maize Road & McCormick
 (Hidden Valley) 0.5 MI. South of Maple
 on the NE Corner of R.C.B.C Over
 Cowskin Creek, South of Hidden Valley
 Elev. = 1318.93 City Datum (1318.93
 NGVD29)



SCALE:
 1" = 20' HORIZONTAL
 1" = 5' VERTICAL
 • = IRON

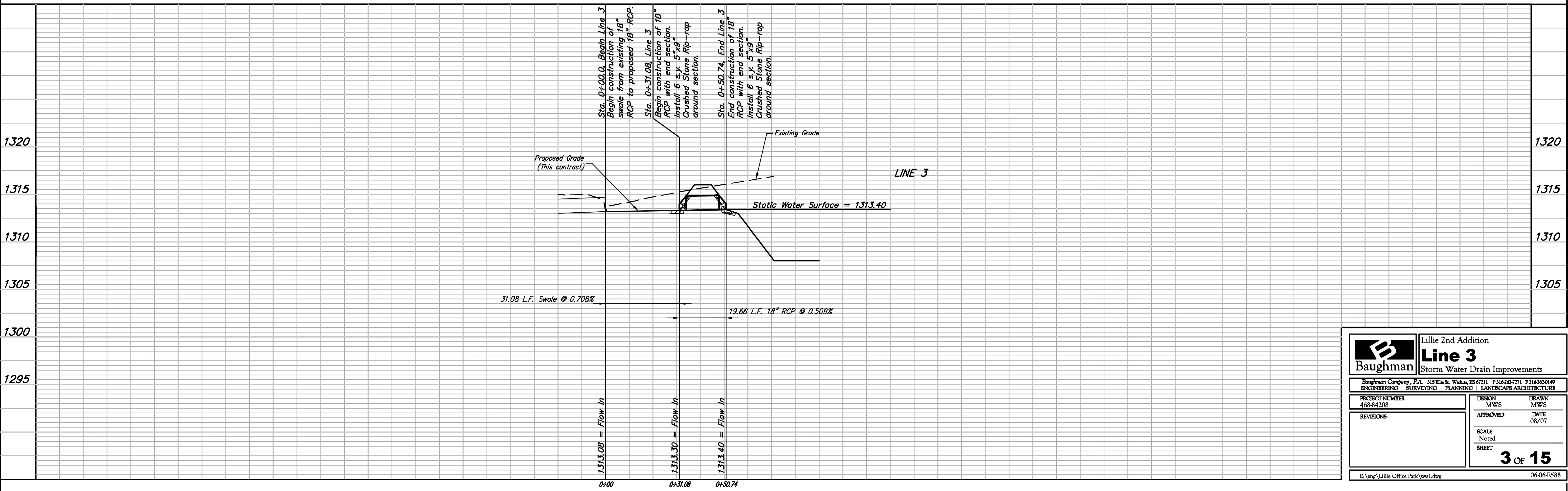


Sta. 0+00.0, Begin Line 3
 Begin construction of
 swale from existing 18"
 RCP to proposed 18" RCP.

Sta. 0+31.08, Line 3
 Begin construction of 18"
 RCP with end section.
 Install 6 s.y. 5"x9"
 Crushed Stone Rip-rap
 around section.

Proposed Pond 2, see
 sht. 5 for details.

Sta. 0+50.74, End Line 3
 End construction of 18"
 RCP with end section.
 Install 6 s.y. 5"x9"
 Crushed Stone Rip-rap
 around section.



Sta. 0+00.0, Begin Line 3
 Begin construction of
 swale from existing 18"
 RCP to proposed 18" RCP.

Sta. 0+31.08, Line 3
 Begin construction of 18"
 RCP with end section.
 Install 6 s.y. 5"x9"
 Crushed Stone Rip-rap
 around section.

Sta. 0+50.74, End Line 3
 End construction of 18"
 RCP with end section.
 Install 6 s.y. 5"x9"
 Crushed Stone Rip-rap
 around section.

31.08 L.F. Swale @ 0.708%

19.66 L.F. 18" RCP @ 0.509%

1313.08 = Flow In

1313.30 = Flow In

1313.40 = Flow In

0+00 0+31.08 0+50.74

	Lillie 2nd Addition	
	Line 3	
Storm Water Drain Improvements		
<small>Baughman Company, P.A. 315 Ellis St. Wichita, KS 67211 P 316-262-7271 F 316-262-0149 ENGINEERING SURVEYING PLANNING LANDSCAPE ARCHITECTURE</small>		
PROJECT NUMBER 468-84208	DESIGN MWS	DRAWN MWS
REVISIONS:	APPROVED	DATE 08/07
SCALE Noted		SHEET 3 OF 15
<small>E:\eng\Lillie Office Park\sws1.dwg</small>		<small>06-06-E588</small>