

LILLIE 2ND ADDITION WICHITA, SEDGWICK COUNTY, KANSAS

Sanitary Sewer Points

PT	EAST	NORTH	ELEV	DESC
1000	4181.1712	5110.4561	0.0000	"Ex. MH, Line 1"
1001	4266.0027	5159.3365	0.0000	Sta. 0+97.91
1002	4266.0027	5417.1836	0.0000	Sta. 3+55.76
1003	4541.3166	5110.1468	0.0000	"Ex. MH, Line 2"
1004	4541.3013	5122.9443	0.0000	Sta. 0+12.80

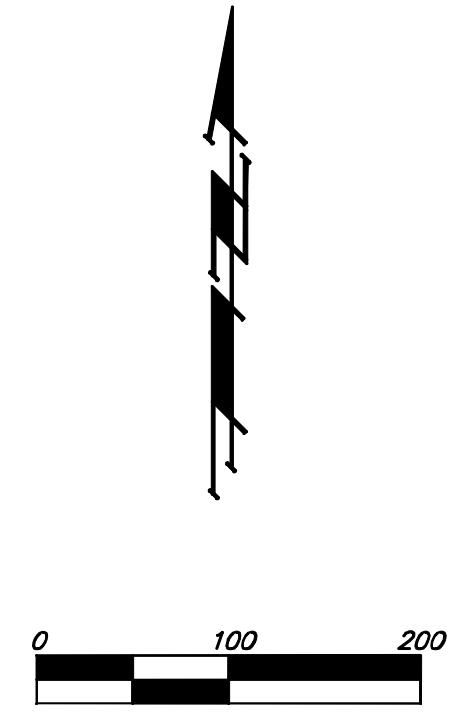
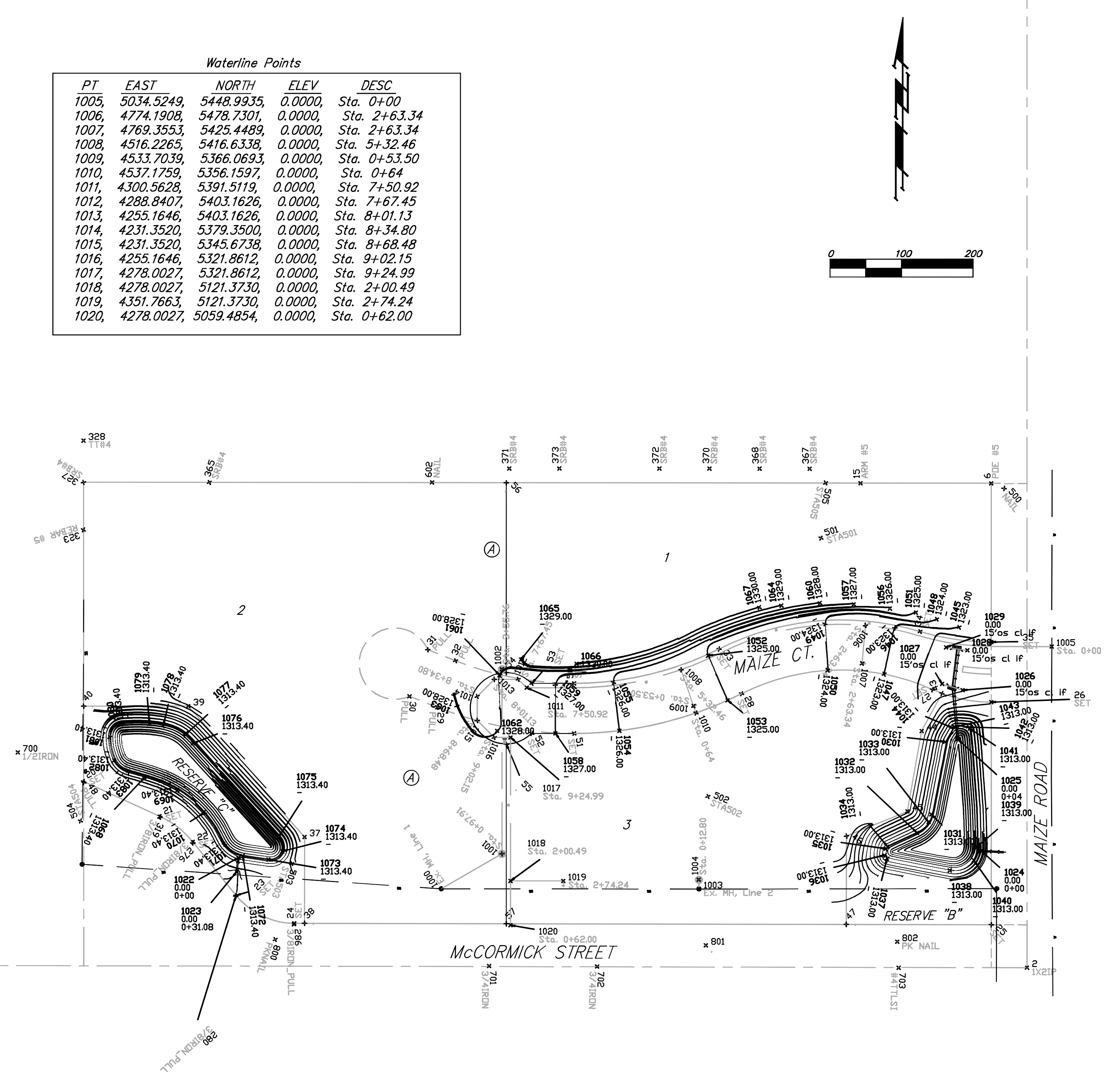
Storm Water Drain Points

PT	NORTH	EAST	ELEV	DESC
1022	5153.7827	3897.8284	0.0000	0+00
1023	5134.2952	3895.2393	0.0000	0+31.08
1024	5163.2700	4935.5276	0.0000	0+00
1025	5319.4881	4903.1471	0.0000	0+04
1026	5387.9826	4909.8326	0.0000	15'os cl if
1027	5396.7232	4881.1341	0.0000	15'os cl if
1028	5443.7373	4916.5211	0.0000	15'os cl if
1029	5447.8124	4886.7991	0.0000	15'os cl if
1030	5315.7642	4885.7048	1313.0000	-
1031	5214.2894	4866.1740	1313.0000	-
1032	5188.5479	4846.2108	1313.0000	-
1033	5203.7349	4862.3615	1313.0000	-
1034	5169.1017	4805.0822	1313.0000	-
1035	5166.0722	4802.8352	1313.0000	-
1036	5157.2688	4801.5298	1313.0000	-
1037	5152.8334	4804.3964	1313.0000	-
1038	5135.9462	4892.0099	1313.0000	-
1039	5168.8116	4930.0638	1313.0000	-
1040	5150.3502	4925.3733	1313.0000	-
1041	5334.2369	4920.2587	1313.0000	-
1042	5336.0935	4918.1095	1313.0000	-
1043	5336.9356	4899.0239	1313.0000	-
1044	5335.0232	4896.3352	1313.0000	-
1045	5475.8426	4905.0803	1323.0000	-
1046	5475.2393	4815.3362	1323.0000	-
1047	5410.4400	4800.1793	1323.0000	-
1048	5487.0730	4873.8324	1324.0000	-
1049	5480.9214	4717.5645	1324.0000	-
1050	5415.6828	4721.4641	1324.0000	-
1051	5496.4392	4844.7021	1325.0000	-
1052	5436.0983	4554.2825	1325.0000	-
1053	5373.7091	4581.2296	1325.0000	-
1054	5331.3537	4430.0543	1326.0000	-
1055	5398.8128	4421.6812	1326.0000	-
1056	5501.9781	4808.3994	1326.0000	-
1057	5507.7575	4757.8327	1327.0000	-
1058	5327.5119	4340.7039	1327.0000	-
1059	5395.2378	4340.5394	1327.0000	-
1060	5509.7608	4710.5759	1328.0000	-
1061	5408.6306	4262.8677	1328.0000	-
1062	5331.1424	4259.2852	1328.0000	-
1063	5365.8398	4203.0712	1328.0000	-
1064	5505.9827	4656.6995	1329.0000	-
1065	5430.6734	4292.5997	1329.0000	-
1066	5424.7046	4370.1486	1330.0000	-
1067	5503.6677	4625.8187	1330.0000	-
1068	5266.9839	3767.0653	1313.4000	-
1069	5248.2558	3812.1102	1313.4000	-
1070	5216.6592	3850.1092	1313.4000	-
1071	5172.7210	3877.9219	1313.4000	-
1072	5156.2583	3903.5525	1313.4000	-
1073	5151.2308	3939.4942	1313.4000	-
1074	5162.5372	3958.8326	1313.4000	-
1075	5182.3009	3953.4599	1313.4000	-
1076	5313.6811	3834.1883	1313.4000	-
1077	5325.1721	3822.4569	1313.4000	-
1078	5338.3013	3792.4240	1313.4000	-
1079	5340.6964	3773.2946	1313.4000	-
1080	5340.2621	3733.1854	1313.4000	-
1081	5322.0709	3717.7082	1313.4000	-
1082	5289.9074	3723.9044	1313.4000	-
1083	5273.6885	3743.7954	1313.4000	-

Waterline Points

PT	EAST	NORTH	ELEV	DESC
1005	5034.5249	5448.9935	0.0000	Sta. 0+00
1006	4774.1908	5478.7301	0.0000	Sta. 2+63.34
1007	4769.3553	5425.4489	0.0000	Sta. 2+63.34
1008	4516.2265	5416.6338	0.0000	Sta. 5+32.46
1009	4533.7039	5366.0693	0.0000	Sta. 0+53.50
1010	4537.1759	5356.1597	0.0000	Sta. 0+64
1011	4300.5628	5391.5119	0.0000	Sta. 7+50.92
1012	4288.8407	5403.1626	0.0000	Sta. 7+67.45
1013	4255.1646	5403.1626	0.0000	Sta. 8+01.13
1014	4231.3520	5379.3500	0.0000	Sta. 8+34.80
1015	4231.3520	5345.6738	0.0000	Sta. 8+68.48
1016	4255.1646	5321.8612	0.0000	Sta. 9+02.15
1017	4278.0027	5321.8612	0.0000	Sta. 9+24.99
1018	4278.0027	5121.3730	0.0000	Sta. 2+00.49
1019	4351.7663	5121.3730	0.0000	Sta. 2+74.24
1020	4278.0027	5059.4854	0.0000	Sta. 0+62.00

PT	NORTH	EAST	ELEV	DESC
1	7644.7200	5000.0000		3X4IP
2	5000.0000	5000.0000		1X2IP
6	5677.0545	4949.9493		POE #15
15	5677.3205	4767.2647		ARM #5
20	5260.2924	3681.2783		SET
21	5211.4789	3788.0235		SET
22	5175.6874	3834.1497		SET
23	5101.1422	3894.2260		SET
24	5062.1075	3975.6022		SET
25	5060.1030	4949.9955		SET
26	5371.2129	4949.9722		SET
27	5388.8787	4867.7733		SET
28	5383.1137	4600.9150		SET
29	5364.0767	4175.4140		PULL
30	5379.4429	4136.6321		PULL
31	5444.5207	4162.4174		PULL
32	5429.1545	4201.1993		PULL
33	5445.6288	4569.4213		SET
34	5469.9355	4850.5725		SET
35	5455.2129	4949.9659		SET
37	5182.8274	3990.0000		
38	5062.0779	3990.0000		
39	5365.7833	3827.4665		
40	5365.6682	3681.2088		
43	5383.3962	4881.2197		
44	5330.7704	4852.5924		
45	5218.4299	4832.6894		
46	5184.0949	4747.5075		
47	5060.5198	4747.4068		
48	5258.9968	3681.3324		PULL
50	5397.5119	4366.9614		SET
51	5327.5119	4366.9614		SET
52	5327.5119	4307.7098		SET
53	5397.5119	4307.7098		SET
54	5412.5119	4272.0027		
55	5312.5119	4272.0027		
56	5677.8597	4272.0027		
57	5061.4977	4272.0027		
276	5174.6554	3833.8048		3/BIRON_PULL
280	5099.9964	3893.8407		3/BIRON_PULL
286	5060.8952	3975.1401		3/BIRON_PULL
319	5210.4391	3787.6570		3/BIRON_PULL
323	5612.1550	3680.8464		REBAR #5
327	5678.5617	3681.0023		SRB #4
328	5736.7776	3680.9311		TT #4
365	5678.4306	3856.9374		SRB #4
367	5697.4817	4696.1684		SRB #4
368	5697.6446	4626.2249		SRB #4
370	5697.6034	4556.1359		SRB #4
371	5697.8666	4276.2186		SRB #4
372	5697.7299	4486.1812		SRB #4
373	5697.9248	4346.3049		SRB #4
500	5669.9800	4967.9300		NAIL
501	5600.4582	4712.0276		STA501
502	5239.3941	4553.9176		STA502
503	5145.7439	3972.1298		STA503
504	5205.0515	3676.6956		STA504
505	5677.8301	4718.3656		STA505
600	5523.5371	2431.3144		STA600
601	5005.4249	2362.8966		CTR
602	5678.4072	4168.2927	147.3977	NAIL
603	7633.4154	2360.5109		N1/4COR
700	5301.1290	3589.0775		1/2IRON
701	5002.5137	4248.0096		3/4IRON
702	5001.8340	4398.9762		3/4IRON
703	5000.0555	4820.4227		#4TTLST
800	5039.4720	3948.9250	127.3300	PKNAIL
801	5031.1857	4550.9375		
802	5036.2170	4818.3600	128.8100	PK NAIL



Baughman Lillie 2nd Addition
Staking Coordinates
Storm Water Drain Improvements

Baughman Company, P.A. 315 Ellis St. Wichita, KS 67211 P 316-262-7271 F 316-262-0149
ENGINEERING | SURVEYING | PLANNING | LANDSCAPE ARCHITECTURE

PROJECT NUMBER 468-84208	DESIGN MWS	DRAWN MWS
REVISIONS:	APPROVED	DATE 08/07
	SCALE Noted	
	SHEET	14 OF 15

E:\eng\Lillie Office Park\Coordinates_staking (all).dwg 06-06-E588