

CONSTRUCTION PLANS FOR SANITARY SEWER EXTENSION

TO SERVE

CYPRESS GLEN ADDITION

CITY OF WICHITA ENGINEERING PROJECT NO. 468-2023-016039
ORG CODE: 47269623, MUNIS NO.: E3123

AND

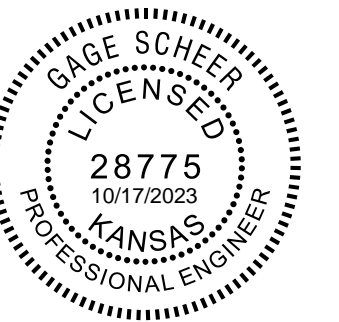
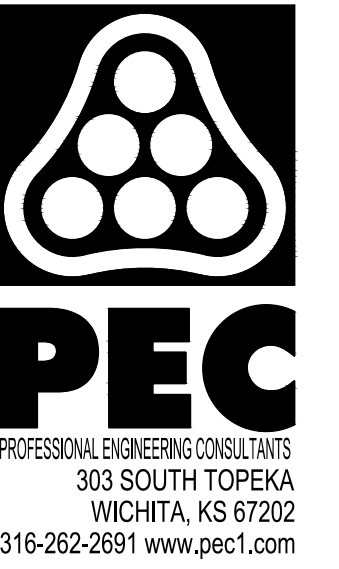
PIKE 3RD ADDITION

CITY OF WICHITA ENGINEERING PROJECT NO. 468-2023-016038
ORG CODE: 47269723, MUNIS NO.: E3124

CITY OF WICHITA, KS

PAUL GUNZELMAN, P.E. - CITY ENGINEER

Apex Construction - Contractor
S. Lowe - City of Wichita, Field Project Engineer
M. Thom - City of Wichita, Inspector
As-Built
Stubs & Risers
Release Date (for connection purposes only): 7/16/2024
Completion Date:
pdf: aprosas 2/26/2025

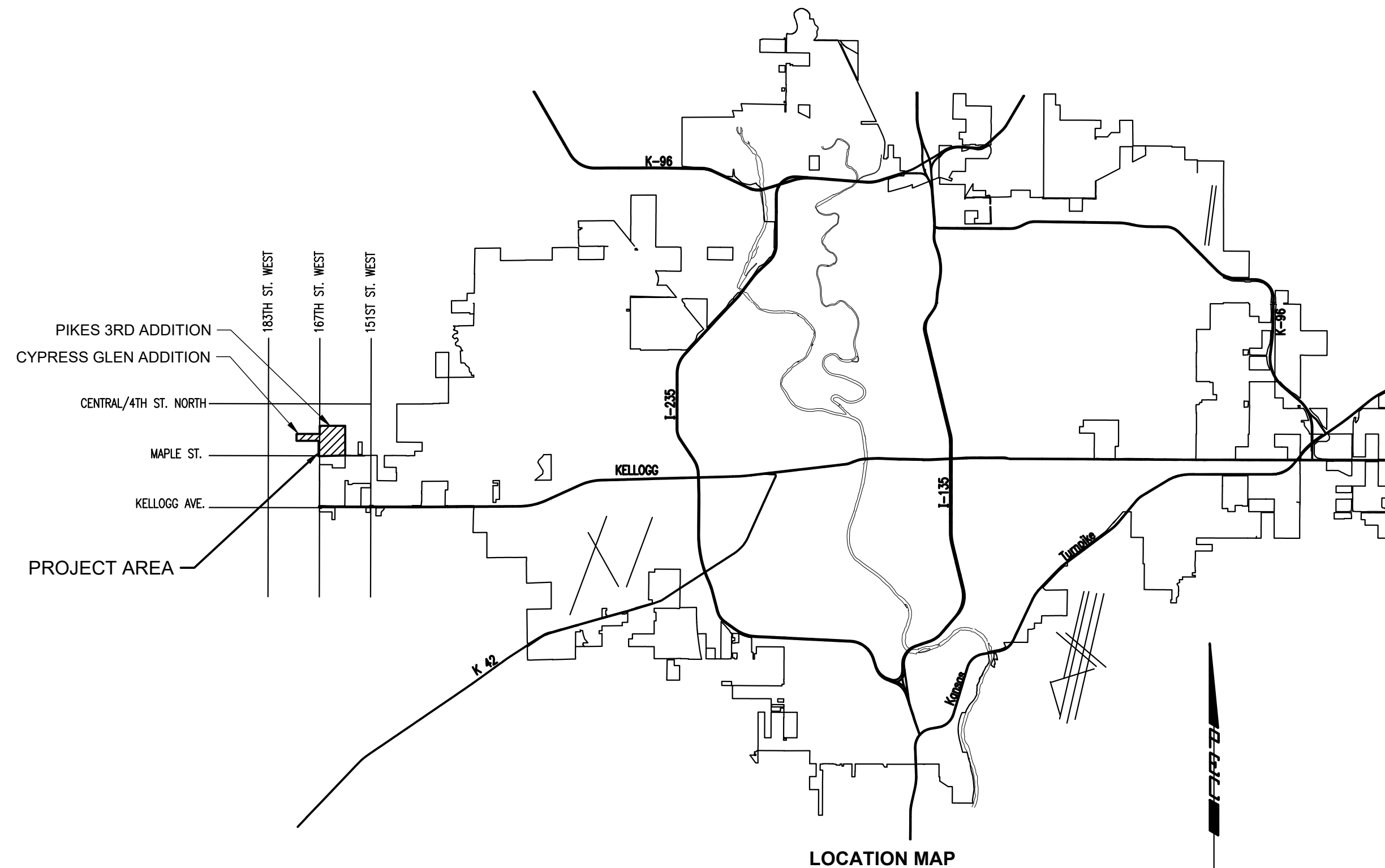


SANITARY SEWER EXTENSION
TO SERVE
CYPRESS GLEN
AND
PIKES 3RD ADDITION
PAUL GUNZELMAN, P.E. - CITY ENGINEER
CITY OF WICHITA PROJECT NO. 468-2023-016039
CITY OF WICHITA PROJECT NO. 448-2023-016042

DEVELOPER CONTACT
MIKE MEYSING
MEYSING PROPERTIES, LLC
35601 EAST 157TH CT
HUDSON, CO 80642
502-693-0921

AND

JAY W. RUSSELL
PO BOX 75337
WICHITA, KS 67205
316-295-8028



INDEX OF SHEETS

SHEET NUMBER	SHEET TITLE
C-001	SANITARY SEWER OFFSITE TITLE SHEET
C-002	GENERAL NOTES
CU-100	OFFSITE SANITARY SEWER BUBBLE MAP
CU-101	SANITARY SEWER LINE NO. 5
CU-102	SANITARY SEWER LINE NO. 5
CU-103	SANITARY SEWER LINE NO. 5
CU-104	SANITARY SEWER LINE NO. 5
CU-105	SANITARY SEWER LINE NO. 5
CU-106	SANITARY SEWER LINE NO. 5
CU-501	PRECAST SANITARY SEWER MANHOLE
CU-502	MANHOLE FRAME AND COVER (SANITARY SEWER)
CU-503	VERTICAL RISER ASSEMBLY SEWER DETAIL
CU-504	EROSION CONTROL PLAN
CU-505	SOIL EROSION BMP DETAILS
CU-506	SOIL EROSION BMP DETAILS
CU-507	SOIL EROSION BMP DETAILS
CU-508	SOIL EROSION BMP DETAILS
CU-509	SOIL EROSION BMP DETAILS
CU-510	COPY OF PLAT -PIKES 3RD ADDITION

JOB NO.	210975-005
DATE	SEPTEMBER 2023
PM	AMD
DESIGNED BY	SNW
DRAWN BY	AJH
CHECKED BY	GAS

SANITARY SEWER OFFSITE
TITLE SHEET

C-001
1 OF 19

SAVED 10/11/2023 10:40:52 AM BY KURTIS.DEKAT
 PLOTTED 10/12/2023 9:54:34 AM BY KURTIS.DEKAT
 U:\WICHITA-CIVIL\2023\210975\005\PEC\DRAWINGS\210975-005-C-001.DWG



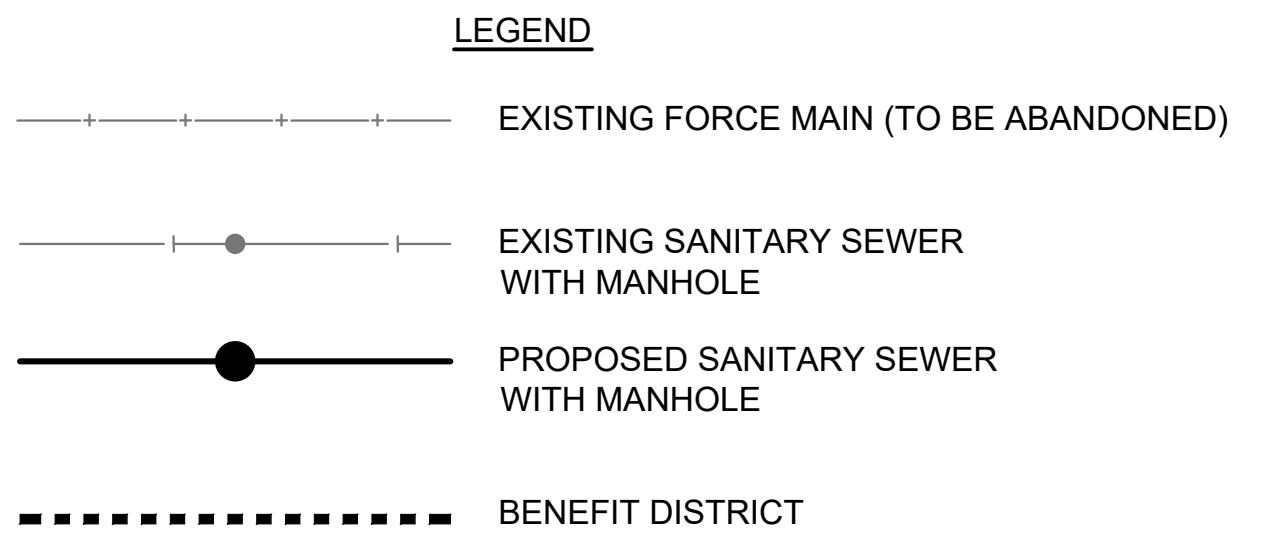
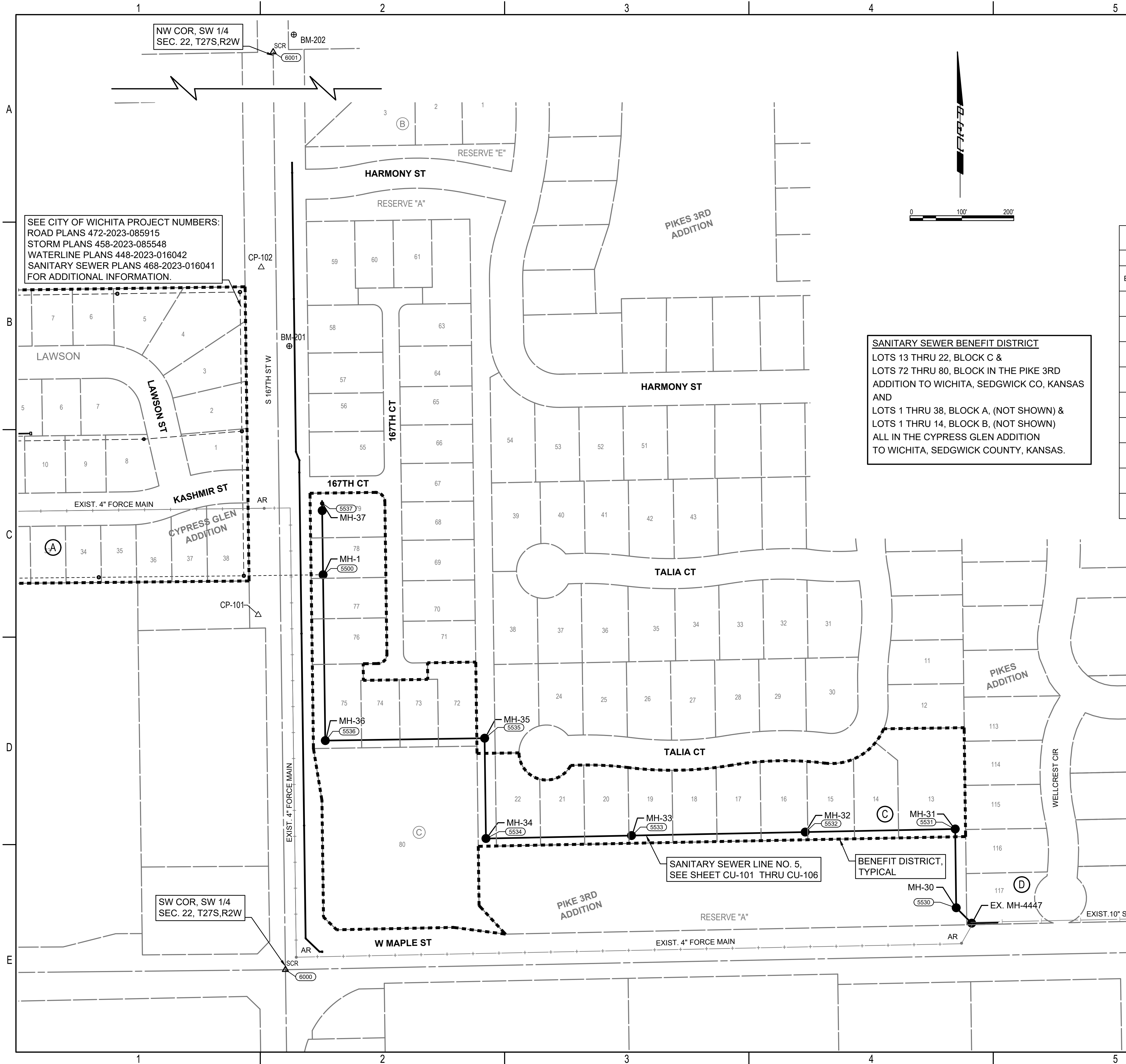
Construction Engineering Division
 1801 S. McLean Blvd., Suite B
 Wichita KS, 67213
 (316) 268-4027

Sanitary Sewer Riser Table

Project Name: WM Impr along 167th St W_SS to serve Cypress Glen Addn & Pike 3rd Addn
Project Location: north of Maple St, west of 167th St W
Project No: 468-2023-016038/468-2023-016039
MUNIS No: E3124 / E3123/47269723 / 47269623
Contractor: Apex Excavating LLC
Inspector: Mike Thom

Riser No.	Line No.	Station	Distance from Main to Riser (Lt./Rt.)	Distance from		Comment
				Upstream MH	Downstream MH	
1	5	82+06	4' Rt.	277'	12'	
2	5	83+18	4' Rt.	165'	124'	
3	5	84+03	4' Rt.	80'	209'	
4	5	84+93	4' Rt.	325'	10'	
5	5	85+83	4' Rt.	235'	100'	
6	5	86+68	4' Rt.	150'	185'	
7	5	87+53	4' Rt.	65'	270'	
8	5	88+38	5' Rt.	260.4	20'	
9	5	89+23	5' Rt.	175.4	105'	
10	5	90+08	5' Rt.	90.4	190'	
11	5	93+25	4' Rt.	274'	33'	
12	5	93+62	4' Rt.	237'	70'	
13	5	93+99	4' Rt.	200'	107'	
14	5	94+36	4' Rt.	163'	144'	
15	5	94+73	4' Rt.	126'	181'	
16	5	95+10	4' Rt.	89'	218'	
17	5	95+47	4' Rt.	52'	255'	
18	5	95+84	4' Rt.	15'	292'	
19	5	97+68	4' Rt.	150.5'	169'	
20	5	98+12	4' Rt.	106.5'	213'	
21	5	98+55	4' Rt.	63.5'	256'	
22	5	99+00	4' Rt.	18.5'	301'	
23	5	99+33	4' Rt.	123'	14.5	
24	5	99+78	4' Rt.	78'	59.5'	
25	5	100+11	4' Rt.	45'	92.5'	
26	5	100+50	4' Rt.	6'	131.5'	

SAVED 10/11/2023 10:59:48 AM BY KURTIS.DEKAT
 PLOTTED 10/12/2023 9:54:53 AM BY KURTIS.DEKAT
 U:\WICHITA-CIVIL\2021\210975\005\PECDRAWINGS\210975-005-CU-100.DWG



**STRUCTURE TABLE
SANITARY SEWER LINE NO. 5**

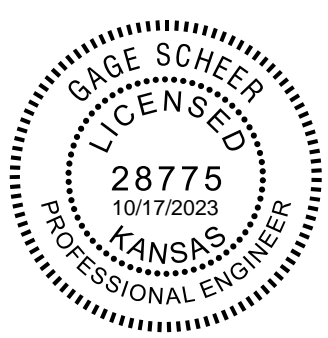
NAME	ID	STATION	COORDINATES	DESCRIPTION
EX. MH-4447		80+00.0 SANITARY SEWER LINE NO. 5	N: 1,682,522.8275 E: 1,593,140.6392	4' DIAMETER MANHOLE
MH-1	5500	99+18.5 SANITARY SEWER LINE NO. 5	N: 1,683,194.5460 E: 1,591,890.7605	5' DIAMETER MANHOLE
MH-30	5530	80+42.1 SANITARY SEWER LINE NO. 5	N: 1,682,552.6100 E: 1,593,110.8567	5' DIAMETER MANHOLE
MH-31	5531	81+93.9 SANITARY SEWER LINE NO. 5	N: 1,682,704.4274 E: 1,593,108.9317	5' DIAMETER MANHOLE
MH-32	5532	84+83.1 SANITARY SEWER LINE NO. 5	N: 1,682,698.5619 E: 1,592,819.7908	5' DIAMETER MANHOLE
MH-33	5533	88+17.8 SANITARY SEWER LINE NO. 5	N: 1,682,691.7740 E: 1,592,485.1812	5' DIAMETER MANHOLE
MH-34	5534	90+98.4 SANITARY SEWER LINE NO. 5	N: 1,682,686.0840 E: 1,592,204.6910	5' DIAMETER MANHOLE
MH-35	5535	92+91.8 SANITARY SEWER LINE NO. 5	N: 1,682,879.4613 E: 1,592,202.0798	5' DIAMETER MANHOLE
MH-36	5536	95+98.8 SANITARY SEWER LINE NO. 5	N: 1,682,874.8407 E: 1,591,895.0775	5' DIAMETER MANHOLE
MH-37	5537	100+55.9 SANITARY SEWER LINE NO. 5	N: 1,683,331.9343 E: 1,591,888.9053	5' DIAMETER MANHOLE

SANITARY SEWER BENEFIT DISTRICT
 LOTS 13 THRU 22, BLOCK C &
 LOTS 72 THRU 80, BLOCK IN THE PIKE 3RD
 ADDITION TO WICHITA, SEDGWICK CO, KANSAS
 AND
 LOTS 1 THRU 38, BLOCK A, (NOT SHOWN) &
 LOTS 1 THRU 14, BLOCK B, (NOT SHOWN)
 ALL IN THE CYPRESS GLEN ADDITION
 TO WICHITA, SEDGWICK COUNTY, KANSAS.

CONTROL SUMMARY
 HORIZONTAL DATUM/COORDINATE SYSTEM: NAD 83 (2011) KANSAS SOUTH ZONE PROJECT
 COORDINATE SYSTEM: (GRID) ON DESCRIBED COORDINATE SYSTEM VERTICAL DATUM: NAVD 88
 SCALE POINT: NORTHING: 0
 EASTING: 0
 COMBINED ADJUSTMENT FACTOR (CAF): GROUND TO GRID=0.99988034
 GRID TO GROUND=1/0.99988034
 DISTANCE UNITS: US SURVEY FEET

- HORIZONTAL CONTROL POINTS**
- CP-100 (NOT SHOWN)
 N: 1,683,328.6253 E: 1,590,916.2335
 SET 1/2" REBAR WITH BLUE PEC CP CAP AT SURFACE
 - 1. 43.37' SE TO CENTERLINE TOP SANITARY SEWER MANHOLE
 - 2. 46.54' ESE TO SW COR CONCRETE PAD
 - 3. 44.54' SSE TO CENTERLINE TOP SANITARY SEWER MANHOLE
- BENCH MARKS**
- BM-200 (NOT SHOWN)
 ELEV: 1,429.28 (NAVD 88)
 CHISELED SQUARE CUT IN NE CORNER OF CONCRETE LIFT STATION PAD APPROXIMATELY 839 FEET W OF THE CENTERLINE OF 167TH ST AND 882 FEET NORTH OF MAPLE STREET
 - BM-201
 ELEV: 1,431.85 (NAVD 88)
 SET "T" SHAPED FENCE POST FLUSH WITH GROUND 1.5 FEET WEST OF WOODEN POWER POLE APPROX 1202 FEET NORTH OF THE INTERSECTION OF 167TH STREET AND MAPLE STREET ON THE EAST SIDE OF ROAD
 - BM-202
 ELEV: 1,424.24 (NAVD 88)
 SET "T" SHAPED FENCE POST FLUSH WITH GROUND 1.5 FEET WEST OF A WOODEN CORNER FENCE POST APPROXIMATELY 33 FEET NORTH OF A HEDGE ROW TO WEST AND 2667 FEET NORTH OF THE INTERSECTION OF MAPLE STREET AND 167TH STREET ON WEST SIDE OF 167TH STREET

- CP-101**
 N: 1,683,117.2541 E: 1,591,765.8789
 SET 1/2" REBAR WITH BLUE PEC CP CAP AT SURFACE
- 1. 43.75' E TO CENTERLINE OF 167TH STREET
 - 2. 17' ESE TO 60D NAIL IN N FACE OF POWER POLE
 - 3. 14.2' NNE TO S FACE OF THE WEST STEEL SIGN POST AT BASE
- CP-102**
 N: 1,683,787.3569 E: 1,591,771.7391
- 1. 6.55' NE TO S END OF A 18" CMP
 - 2. 11.4' SE TO W FACE OF 55 MPH STEEL SIGN POST AT BASE
 - 3. 19' N TO THE CENTERLINE OF FIELD ENTRANCE TO W



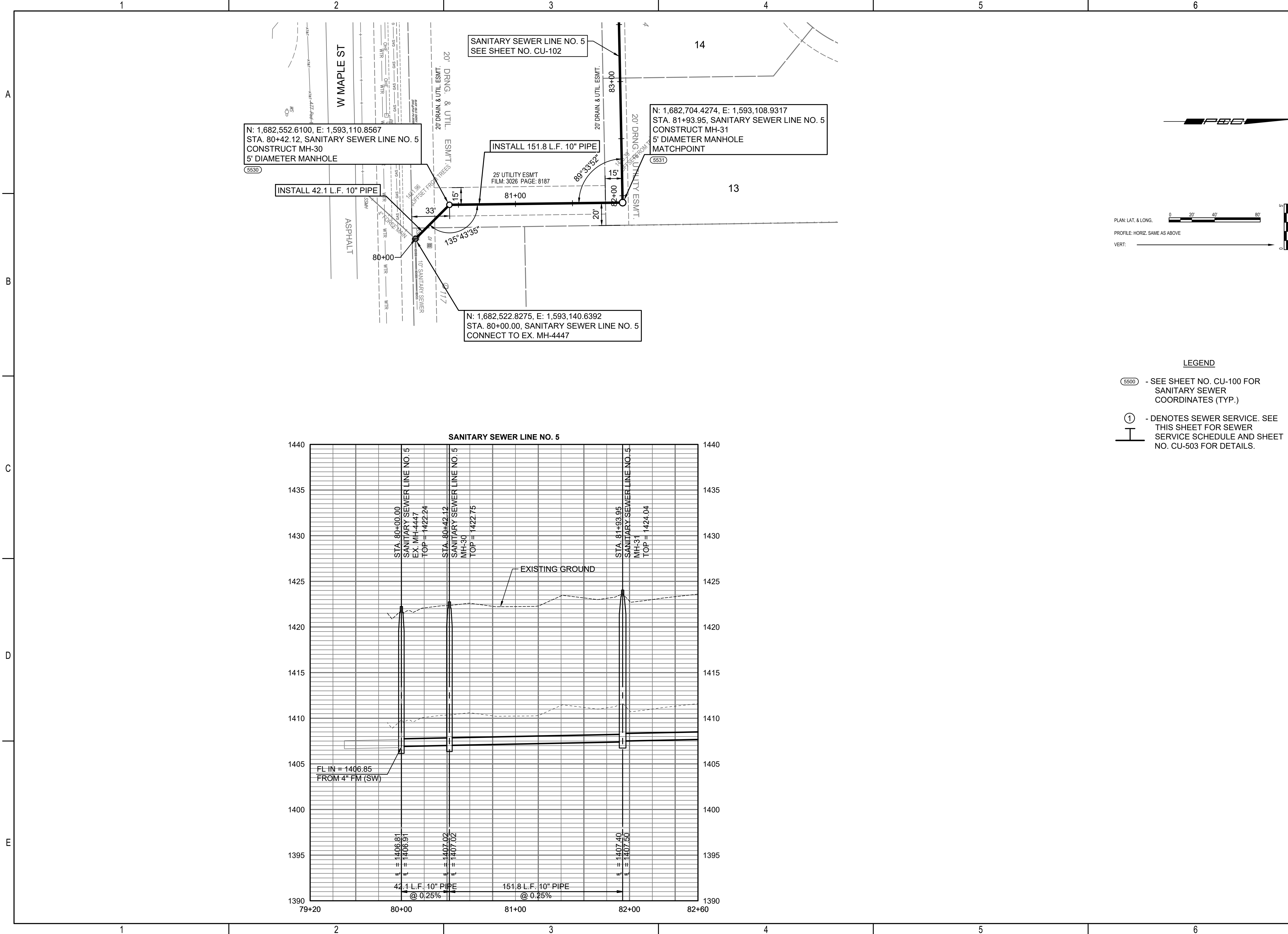
**SANITARY SEWER EXTENSION
 TO SERVE
 CYPRESS GLEN
 AND
 PIKES 3RD ADDITION**

PAUL GUNZELMAN, P.E. - CITY ENGINEER
 CITY OF WICHITA PROJECT NO. 448-2023-016039
 CITY OF WICHITA PROJECT NO. 448-2023-016042

JOB NO.	210975-005
DATE	SEPTEMBER 2023
PM	AMD
DESIGNED BY	SNW
DRAWN BY	AJH
CHECKED BY	GAS

OFFSITE SANITARY SEWER BUBBLE MAP

SAVED 10/11/2023 11:04:48 AM BY KURTIS.DEKAT
 PLOTTED 10/12/2023 9:55:07 AM BY KURTIS.DEKAT
 U:\WICHITA-CIVIL\2021\10975005\PEC\DRAWINGS\210975-005-CU-101.DWG

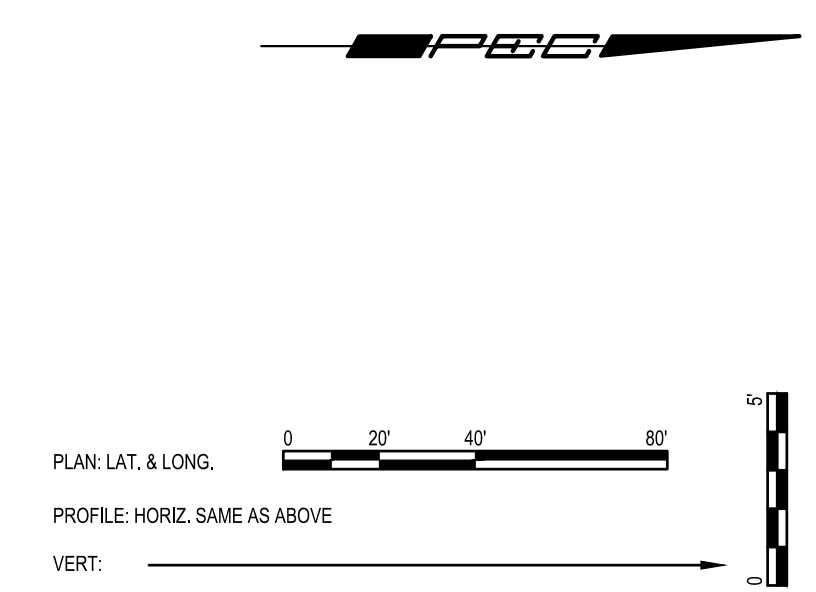


N: 1,682,552.6100, E: 1,593,110.8567
 STA. 80+42.12, SANITARY SEWER LINE NO. 5
 CONSTRUCT MH-30
 5' DIAMETER MANHOLE

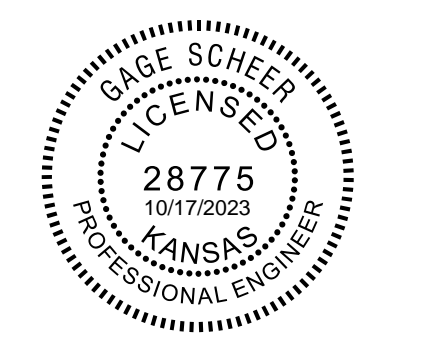
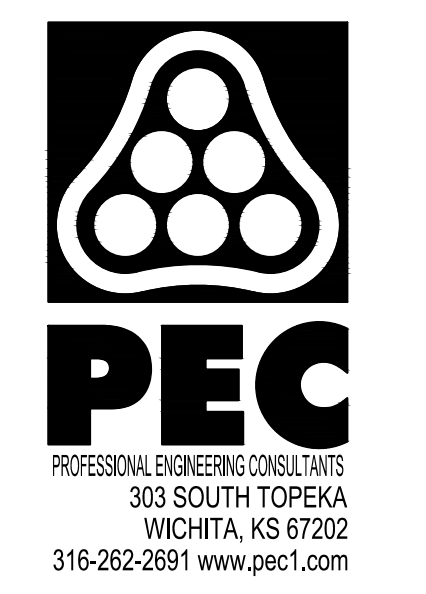
INSTALL 151.8 L.F. 10" PIPE

N: 1,682,704.4274, E: 1,593,108.9317
 STA. 81+93.95, SANITARY SEWER LINE NO. 5
 CONSTRUCT MH-31
 5' DIAMETER MANHOLE
 MATCHPOINT

N: 1,682,522.8275, E: 1,593,140.6392
 STA. 80+00.00, SANITARY SEWER LINE NO. 5
 CONNECT TO EX. MH-4447



- LEGEND**
- (5500) - SEE SHEET NO. CU-100 FOR SANITARY SEWER COORDINATES (TYP.)
 - ① - DENOTES SEWER SERVICE. SEE THIS SHEET FOR SEWER SERVICE SCHEDULE AND SHEET NO. CU-503 FOR DETAILS.

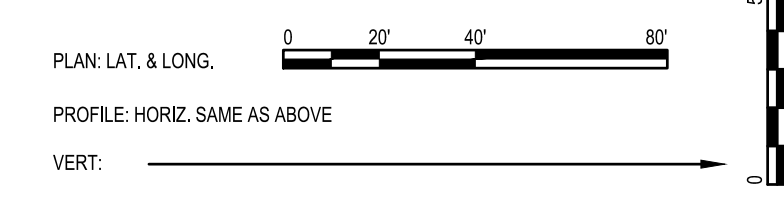
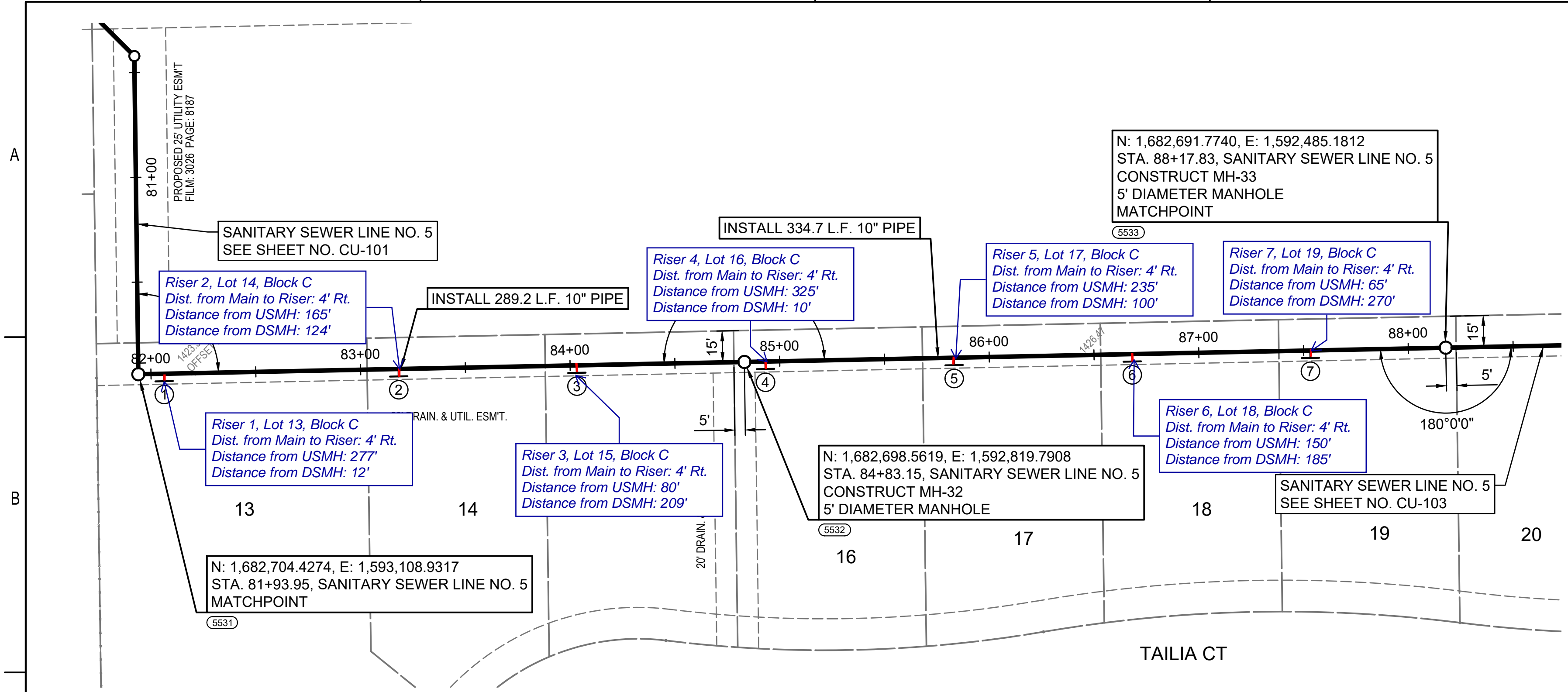


SANITARY SEWER EXTENSION
 TO SERVE
CYPRESS GLEN
 AND
PIKES 3RD ADDITION
 PAUL GUNZELMAN, P.E. - CITY ENGINEER
 CITY OF WICHITA PROJECT NO. 448-2023-016039
 CITY OF WICHITA PROJECT NO. 448-2023-016042

JOB NO.	210975-005
DATE	SEPTEMBER 2023
PM	AMD
DESIGNED BY	SNW
DRAWN BY	AJH
CHECKED BY	GAS

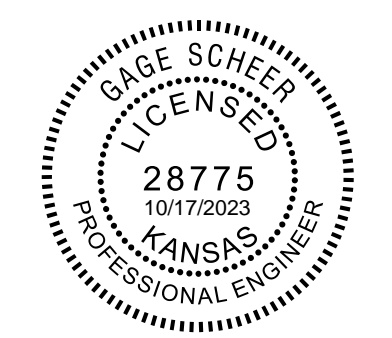
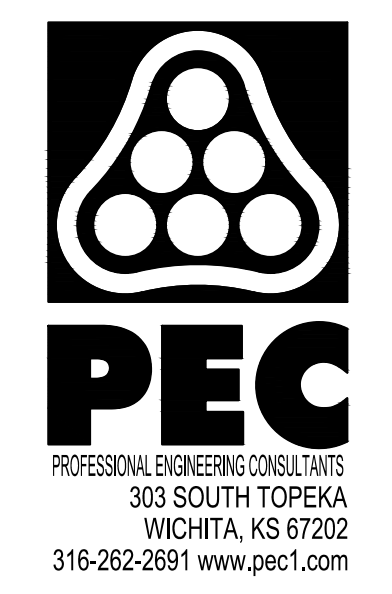
SANITARY SEWER LINE NO. 5

1 2 3 4 5 6

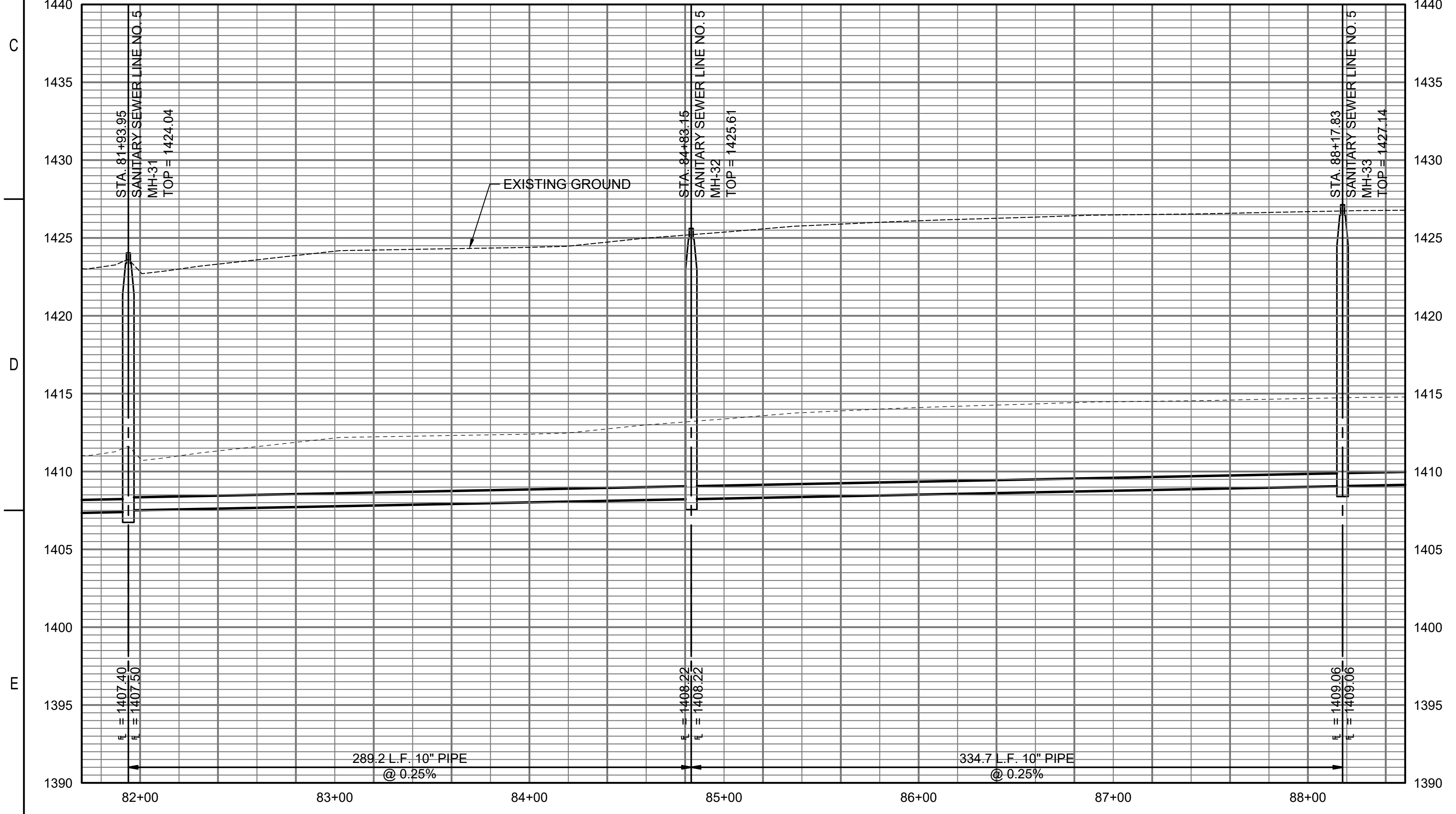


LEGEND

- (5500) - SEE SHEET NO. CU-100 FOR SANITARY SEWER COORDINATES (TYP.)
- ① - DENOTES SEWER SERVICE. SEE THIS SHEET FOR SEWER SERVICE SCHEDULE AND SHEET NO. CU-503 FOR DETAILS.



SANITARY SEWER LINE NO. 5



SANITARY SEWER RISER TABLE								
NUMBER	TYPE	LOT NO.	BLOCK NO.	LINE NO.	STATION	DIRECTION	APPROXIMATE VERTICAL (FT)	APPROXIMATE HORIZONTAL (FT)
1	4" TEE	13	C	5	82+06	RT	11	4
2	4" TEE	14	C	5	83+18	RT	12	4
3	4" TEE	15	C	5	84+03	RT	12	4
4	4" TEE	16	C	5	84+93	RT	13	4
5	4" TEE	17	C	5	85+83	RT	14	4
6	4" TEE	18	C	5	86+68	RT	14	4
7	4" TEE	19	C	5	87+53	RT	14	4

SANITARY SEWER EXTENSION
TO SERVE
CYPRESS GLEN
AND
PIKES 3RD ADDITION

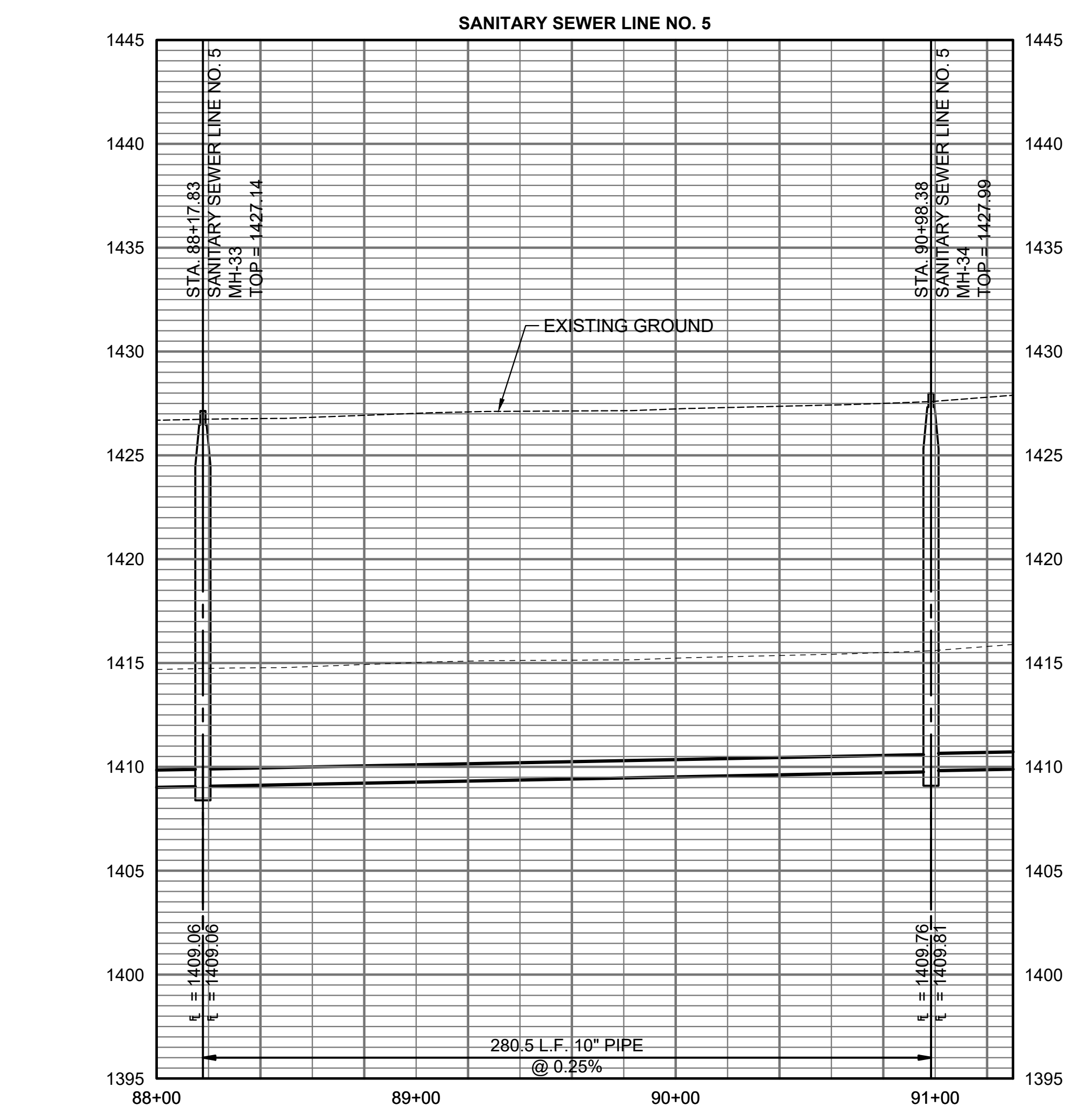
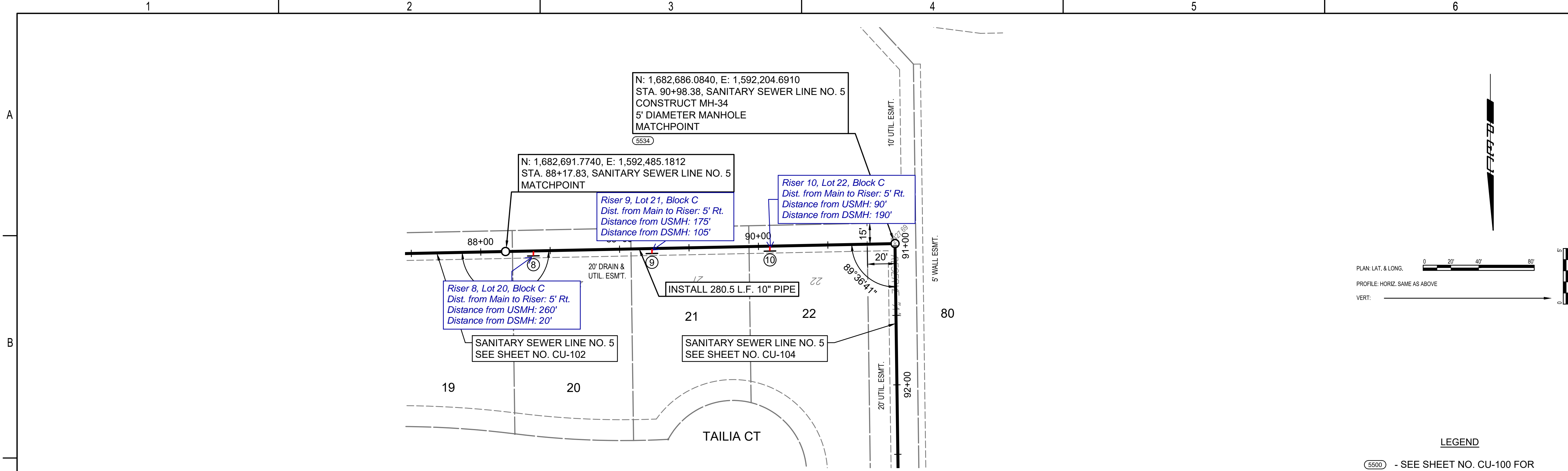
PAUL GUNZELMAN, P.E. - CITY ENGINEER
CITY OF WICHITA PROJECT NO. 448-2023-016039
CITY OF WICHITA PROJECT NO. 448-2023-016042

JOB NO.	210975-005
DATE	SEPTEMBER 2023
PM	AMD
DESIGNED BY	SNW
DRAWN BY	AJH
CHECKED BY	GAS

SANITARY SEWER LINE NO. 5

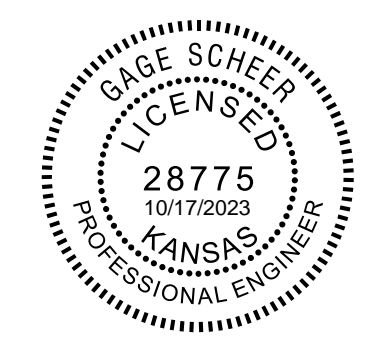
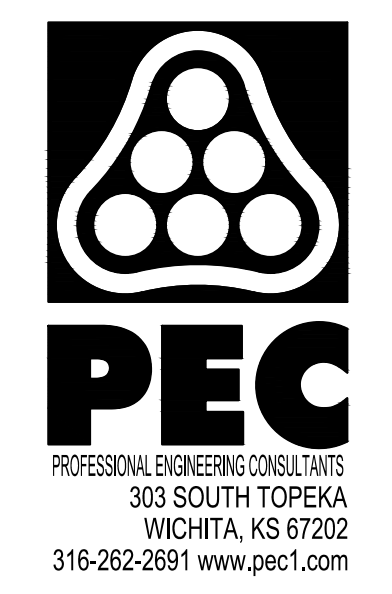
SAVED 10/11/2023 11:05:26 AM BY KURTIS DEKAT
PLOTTED 10/12/2023 9:55:22 AM BY KURTIS DEKAT
U:\WICHITA-CIVIL\2021\210975\005\PEC\DRAWINGS\210975-005-CU-102.DWG

SAVED 10/6/2023 3:43:39 PM BY KURTIS DEKAT
 PLOTTED 10/12/2023 9:55:37 AM BY KURTIS DEKAT
 U:\WICHITA-CIVIL\2021\10975005\PECDRAWINGS\210975-005-CU-103.DWG



SANITARY SEWER RISER TABLE								
NUMBER	TYPE	LOT NO.	BLOCK NO.	LINE NO.	STATION	DIRECTION	APPROXIMATE VERTICAL (FT)	APPROXIMATE HORIZONTAL (FT)
8	4" TEE	20	C	5	88+38	RT	14	5
9	4" TEE	21	C	5	89+23	RT	13	5
10	4" TEE	22	C	5	90+08	RT	14	5

- LEGEND**
- (S500) - SEE SHEET NO. CU-100 FOR SANITARY SEWER COORDINATES (TYP.)
 - ① - DENOTES SEWER SERVICE. SEE THIS SHEET FOR SEWER SERVICE SCHEDULE AND SHEET NO. CU-503 FOR DETAILS.

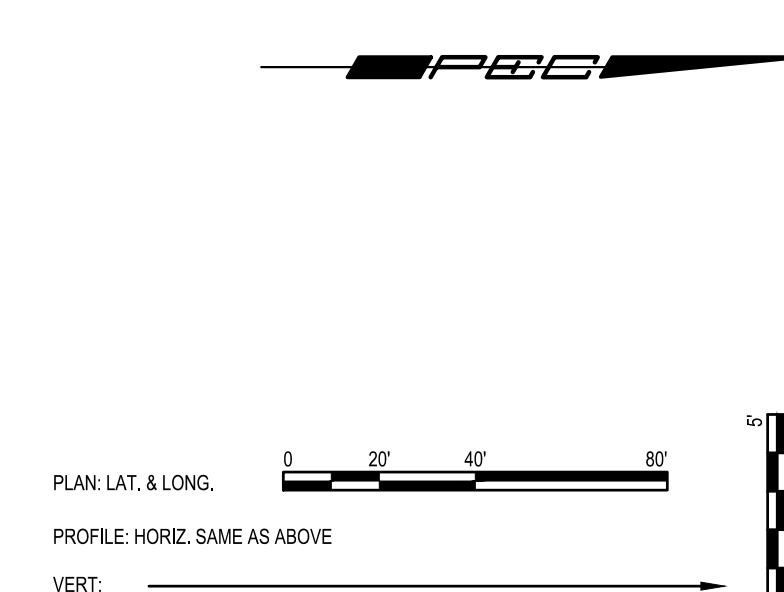
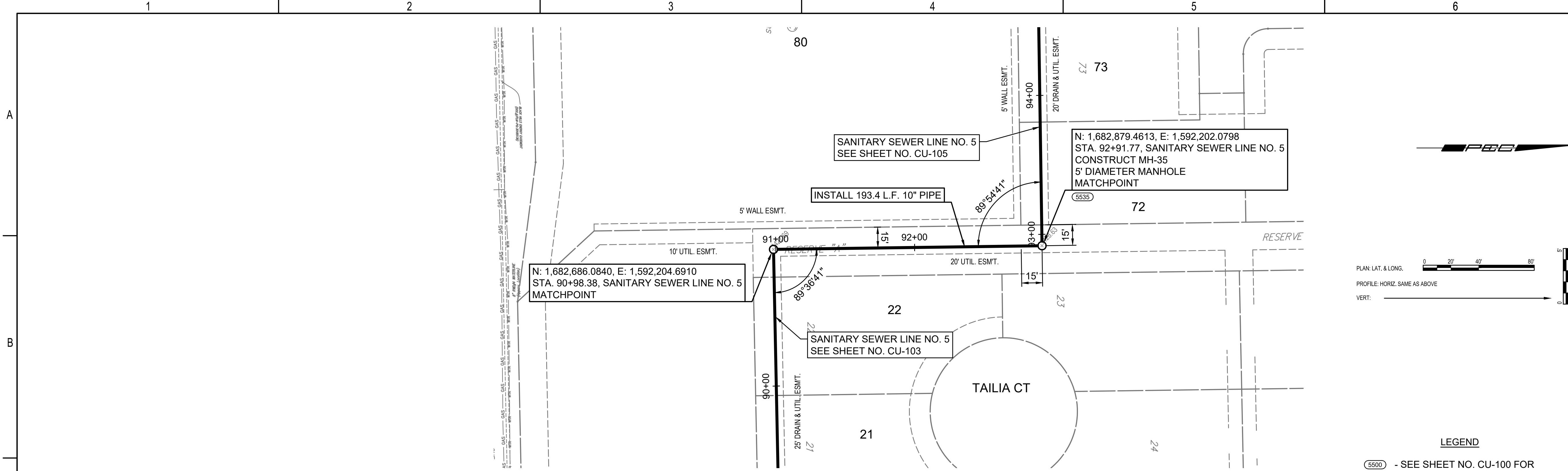


SANITARY SEWER EXTENSION TO SERVE CYPRESS GLEN AND PIKES 3RD ADDITION
 PAUL GUNZELMAN, P.E. - CITY ENGINEER
 CITY OF WICHITA PROJECT NO. 468-2023-016039
 CITY OF WICHITA PROJECT NO. 448-2023-016042

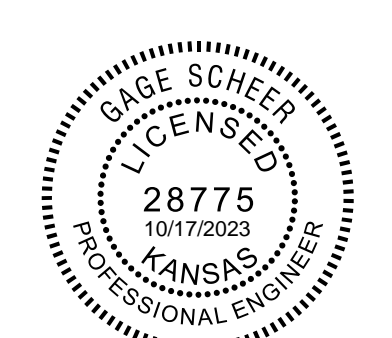
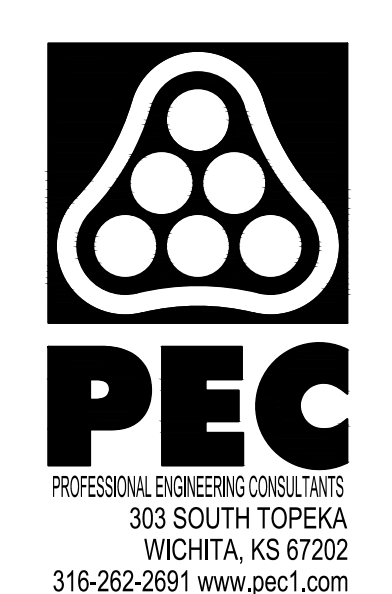
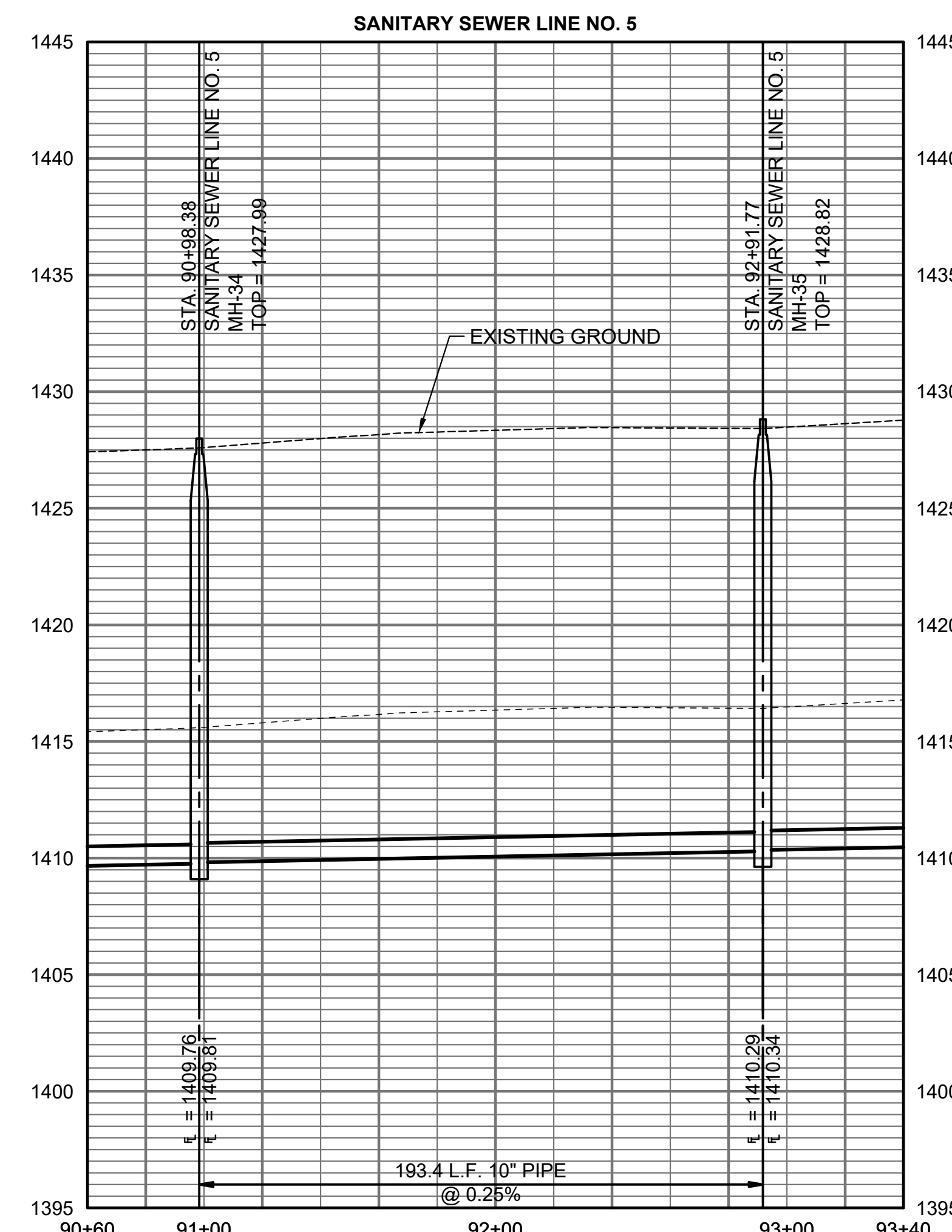
JOB NO.	210975-005
DATE	SEPTEMBER 2023
PM	AMD
DESIGNED BY	SNW
DRAWN BY	AJH
CHECKED BY	GAS

SANITARY SEWER LINE NO. 5

SAVED 10/11/2023 11:08:21 AM BY KURTIS.DEKAT
 PLOTTED 10/12/2023 9:55:52 AM BY KURTIS.DEKAT
 U:\WICHITA-CIVIL\2021\10975005\PEC\DRAWINGS\210975-005-CU-104.DWG



- LEGEND**
- (S500) - SEE SHEET NO. CU-100 FOR SANITARY SEWER COORDINATES (TYP.)
 - ① - DENOTES SEWER SERVICE. SEE THIS SHEET FOR SEWER SERVICE SCHEDULE AND SHEET NO. CU-503 FOR DETAILS.

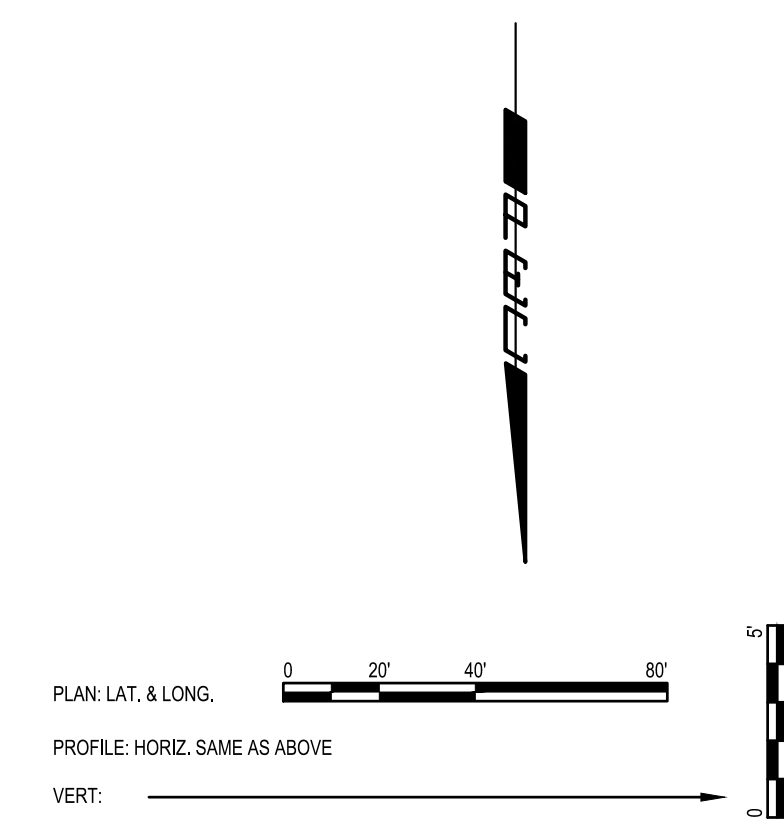
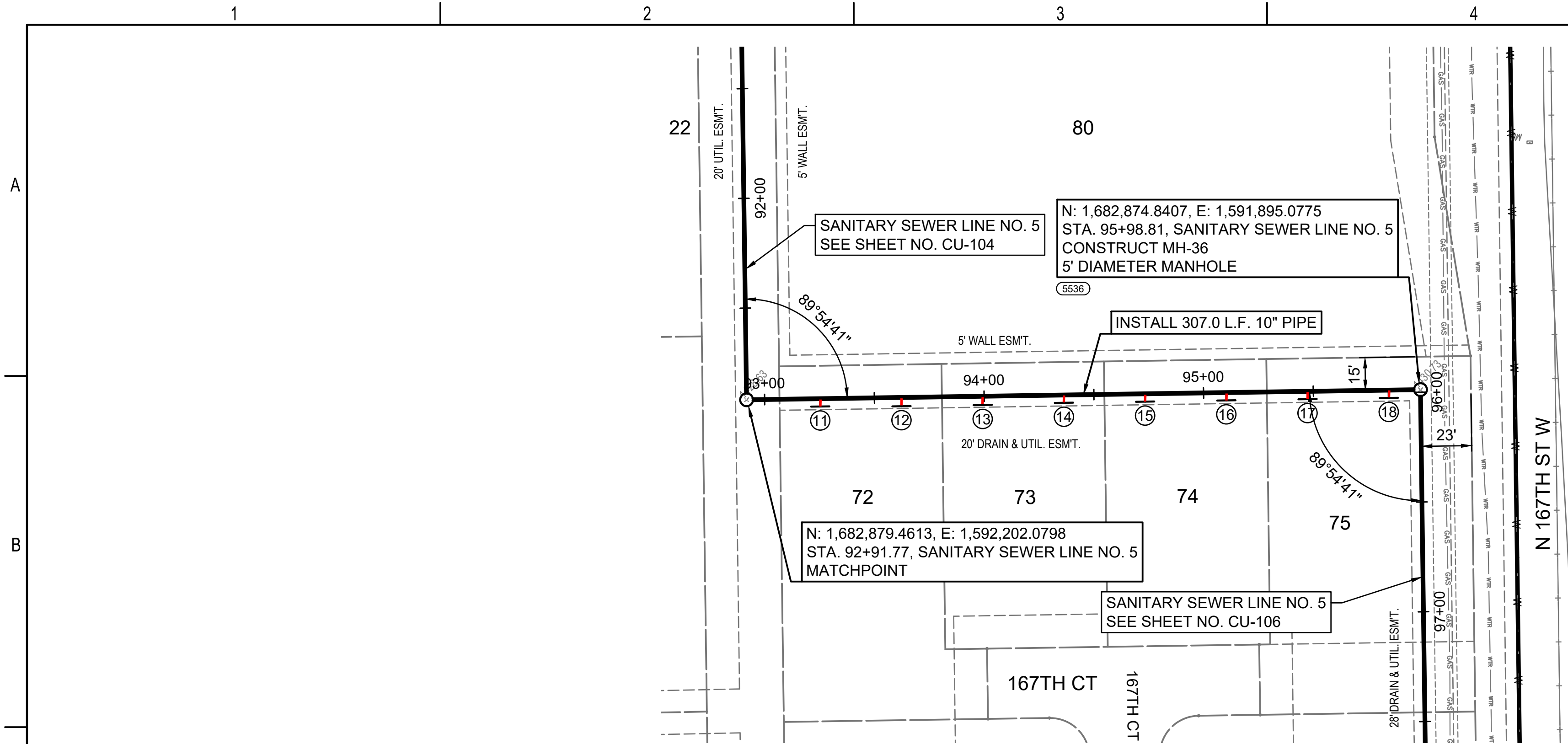


SANITARY SEWER EXTENSION
 TO SERVE
CYPRESS GLEN
 AND
PIKES 3RD ADDITION
 PAUL GUNZELMAN, P.E. - CITY ENGINEER
 CITY OF WICHITA PROJECT NO. 468-2023-016039
 CITY OF WICHITA PROJECT NO. 448-2023-016042

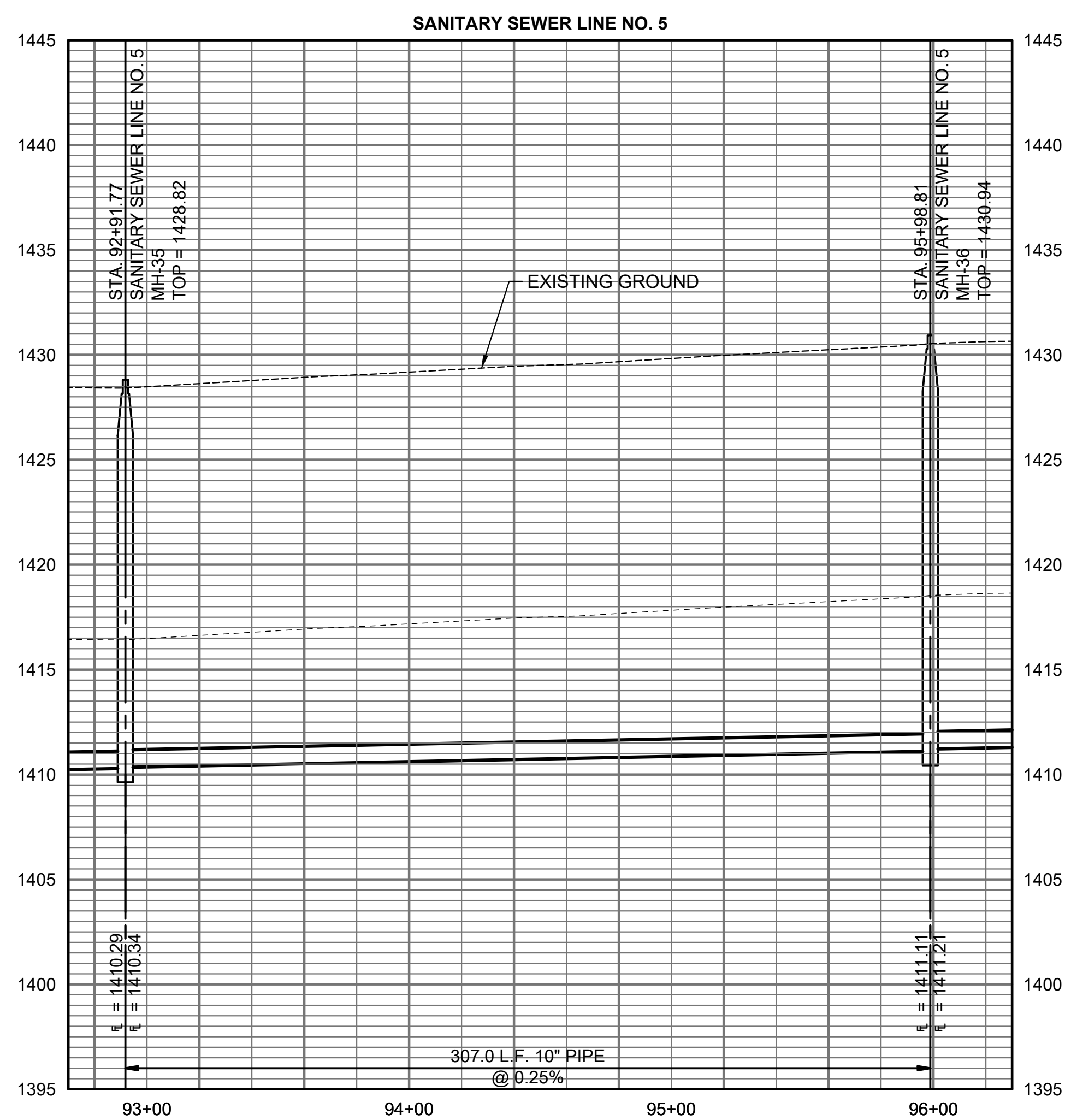
JOB NO.	210975-005
DATE	SEPTEMBER 2023
PM	AMD
DESIGNED BY	SNW
DRAWN BY	AJH
CHECKED BY	GAS

SANITARY SEWER LINE NO. 5

SAVED 10/11/2023 11:10:03 AM BY KURTIS.DEKAT
 PLOTTED 10/12/2023 9:56:10 AM BY KURTIS.DEKAT
 U:\WICHITA-CIVIL\2021\10975005\PEC\DRAWINGS\210975-005-CU-105.DWG




- LEGEND**
- (5500) - SEE SHEET NO. CU-100 FOR SANITARY SEWER COORDINATES (TYP.)
 - ① - DENOTES SEWER SERVICE. SEE THIS SHEET FOR SEWER SERVICE SCHEDULE AND SHEET NO. CU-503 FOR DETAILS.




SANITARY SEWER RISER TABLE								
NUMBER	TYPE	LOT NO.	BLOCK NO.	LINE NO.	STATION	DIRECTION	APPROXIMATE VERTICAL (FT)	APPROXIMATE HORIZONTAL (FT)
11	4" TEE	72	C	5	93+25	RT	14	4
12	4" TEE	72	C	5	93+62	RT	14	4
13	4" TEE	73	C	5	93+99	RT	15	4
14	4" TEE	73	C	5	94+36	RT	15	4
15	4" TEE	74	C	5	94+73	RT	15	4
16	4" TEE	74	C	5	95+10	RT	15	4
17	4" TEE	75	C	5	95+47	RT	15	4
18	4" TEE	75	C	5	95+84	RT	15	4

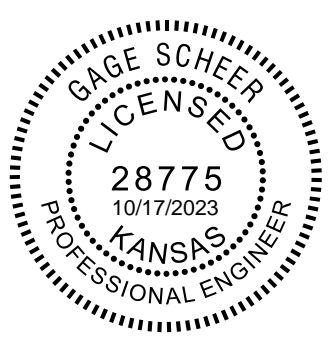
RISER NO.	DISTANCE FROM MAIN TO RISER (LT./RT.)	DISTANCE FROM	
		UPSTREAM MH	DOWNSTREAM MH
11	4' Rt.	274'	33'
12	4' Rt.	237'	70'
13	4' Rt.	200'	107'
14	4' Rt.	163'	144'
15	4' Rt.	126'	181'
16	4' Rt.	89'	218'
17	4' Rt.	52'	255'
18	4' Rt.	15'	292'



PROFESSIONAL ENGINEERING CONSULTANTS
 303 SOUTH TOPEKA
 WICHITA, KS 67202
 316-262-2691 www.pec1.com



CITY OF WICHITA



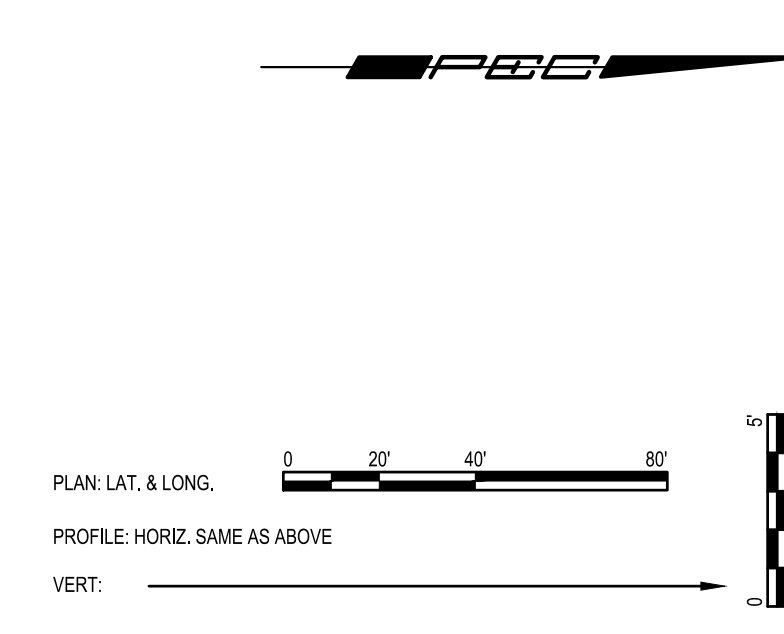
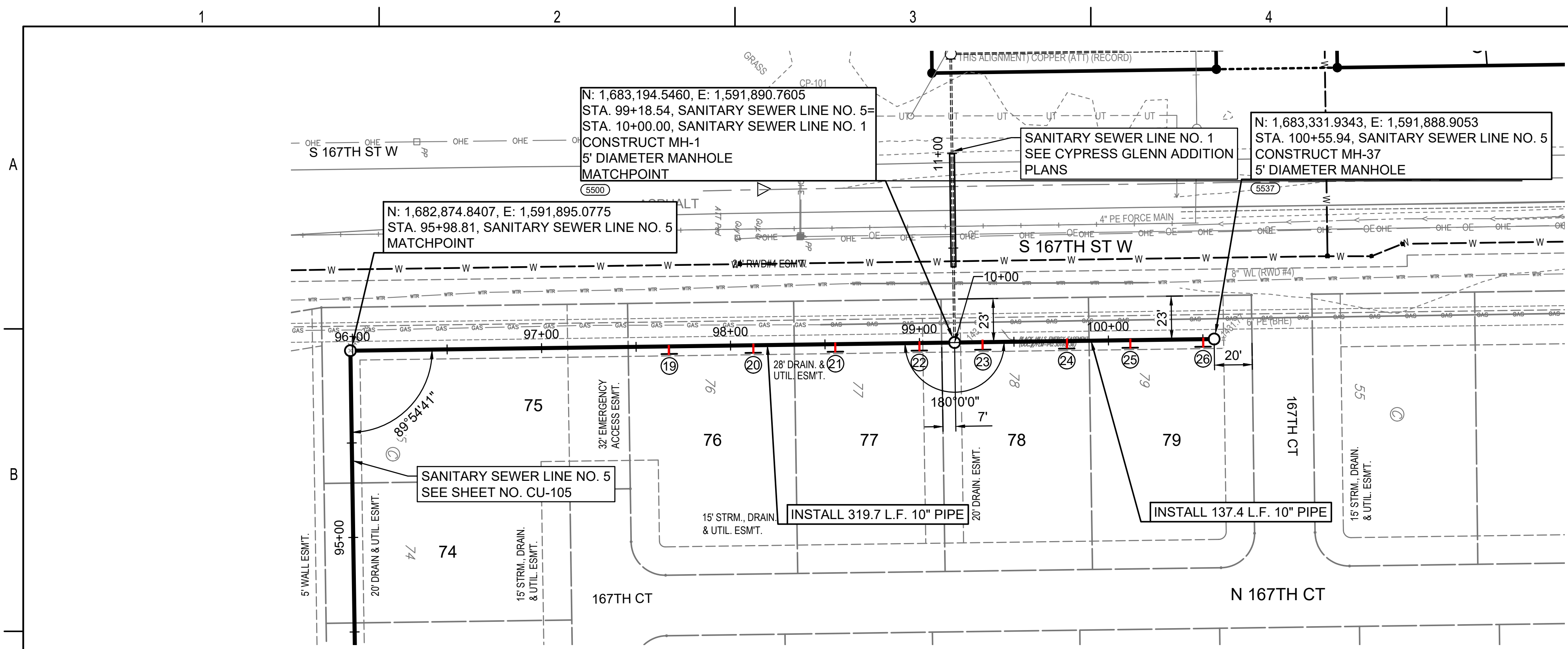
GAGE SCHEER
 LICENSED
 28775
 10/17/2023
 KANSAS
 PROFESSIONAL ENGINEER

SANITARY SEWER EXTENSION
 TO SERVE
CYPRESS GLEN
 AND
PIKES 3RD ADDITION

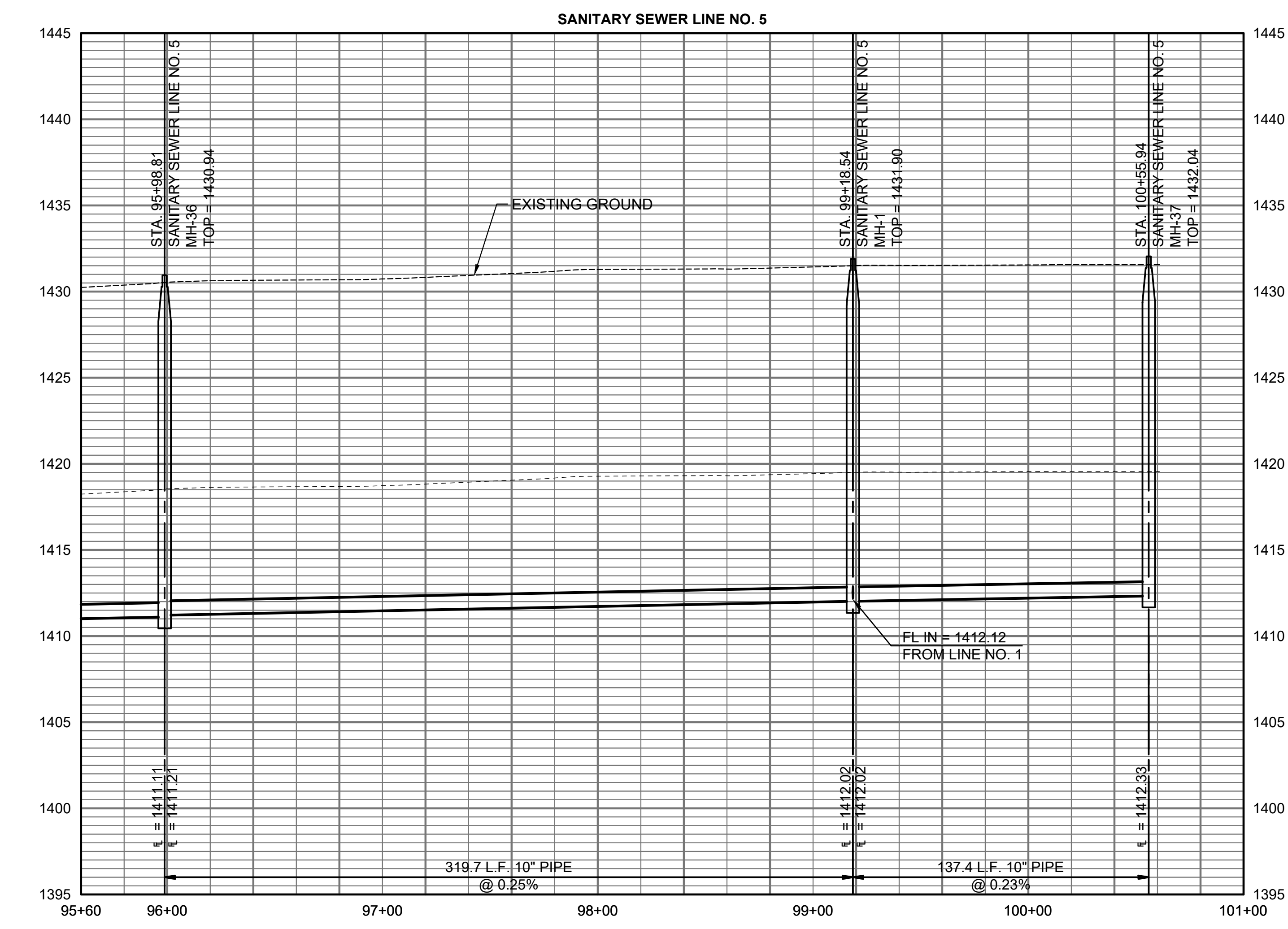
PAUL GUNZELMAN, P.E. - CITY ENGINEER
 CITY OF WICHITA PROJECT NO. 468-2023-016039
 CITY OF WICHITA PROJECT NO. 448-2023-016042

JOB NO.	210975-005
DATE	SEPTEMBER 2023
PM	AMD
DESIGNED BY	SNW
DRAWN BY	AJH
CHECKED BY	GAS
SANITARY SEWER LINE NO. 5	
CU-105	
8 OF 19	

SAVED 10/11/2023 11:13:48 AM BY KURTIS DEKAT
 PLOTTED 10/12/2023 9:56:25 AM BY KURTIS DEKAT
 U:\WICHITA-CIVIL\2021\10975005\PECDRAWINGS\210975-005-CU-106.DWG

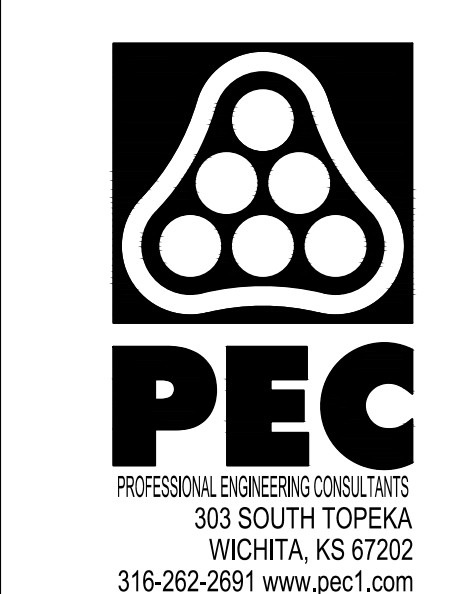


- LEGEND**
- (5500) - SEE SHEET NO. CU-100 FOR SANITARY SEWER COORDINATES (TYP.)
 - ① - DENOTES SEWER SERVICE. SEE THIS SHEET FOR SEWER SERVICE SCHEDULE AND SHEET NO. CU-503 FOR DETAILS.



SANITARY SEWER RISER TABLE								
NUMBER	TYPE	LOT NO.	BLOCK NO.	LINE NO.	STATION	DIRECTION	APPROXIMATE VERTICAL (FT)	APPROXIMATE HORIZONTAL (FT)
19	4" TEE	76	C	5	97+68	RT	15	4
20	4" TEE	76	C	5	98+12	RT	15	4
21	4" TEE	77	C	5	98+55	RT	15	4
22	4" TEE	77	C	5	99+00	RT	15	4
23	4" TEE	78	C	5	99+33	RT	15	4
24	4" TEE	78	C	5	99+78	RT	15	4
25	4" TEE	79	C	5	100+11	RT	15	4
26	4" TEE	79	C	5	100+50	RT	15	4

RISER NO.	DISTANCE FROM MAIN TO RISER (LT./RT.)	DISTANCE FROM	
		UPSTREAM MH	DOWNSTREAM MH
19	4' Rt.	151'	169'
20	4' Rt.	107'	213'
21	4' Rt.	64'	256'
22	4' Rt.	19'	301'
23	4' Rt.	123'	15'
24	4' Rt.	78'	60'
25	4' Rt.	45'	93'
26	4' Rt.	6'	132'



SANITARY SEWER EXTENSION
 TO SERVE
CYPRESS GLEN
 AND
PIKES 3RD ADDITION
 PAUL GUNZELMAN, P.E. - CITY ENGINEER
 CITY OF WICHITA PROJECT NO. 468-2023-016039
 CITY OF WICHITA PROJECT NO. 448-2023-016042

JOB NO.	210975-005
DATE	SEPTEMBER 2023
PM	AMD
DESIGNED BY	SNW
DRAWN BY	AJH
CHECKED BY	GAS

SANITARY SEWER LINE NO. 5

CU-106
 9 OF 19