

10-1

16TH STREET NORTH

WACO

FAIRVIEW

1648 N. Waco

MH # 5449-189  
Approx depth = 4.0 ft

MH # 5449-186  
Reconstruct Manhole  
(manhole not found / Contractor responsible to locate and expose)

# 5449-184U  
(Underground Union)  
(nothing visible at surface)

MH # 5449-182  
Reconstruct Manhole  
Construct Outside Drop for line coming into manhole from the north  
Approx pipe depth = 4.0 ft +/-  
Approx manhole depth = 7.7 ft

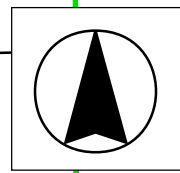
Private Cleanout

( private line )

1602 N. Waco

230 W. 15th St.

15TH STREET NORTH



SITE 10

306'

340'

115' (unpaved alley)

176'

30'

18"

10-2

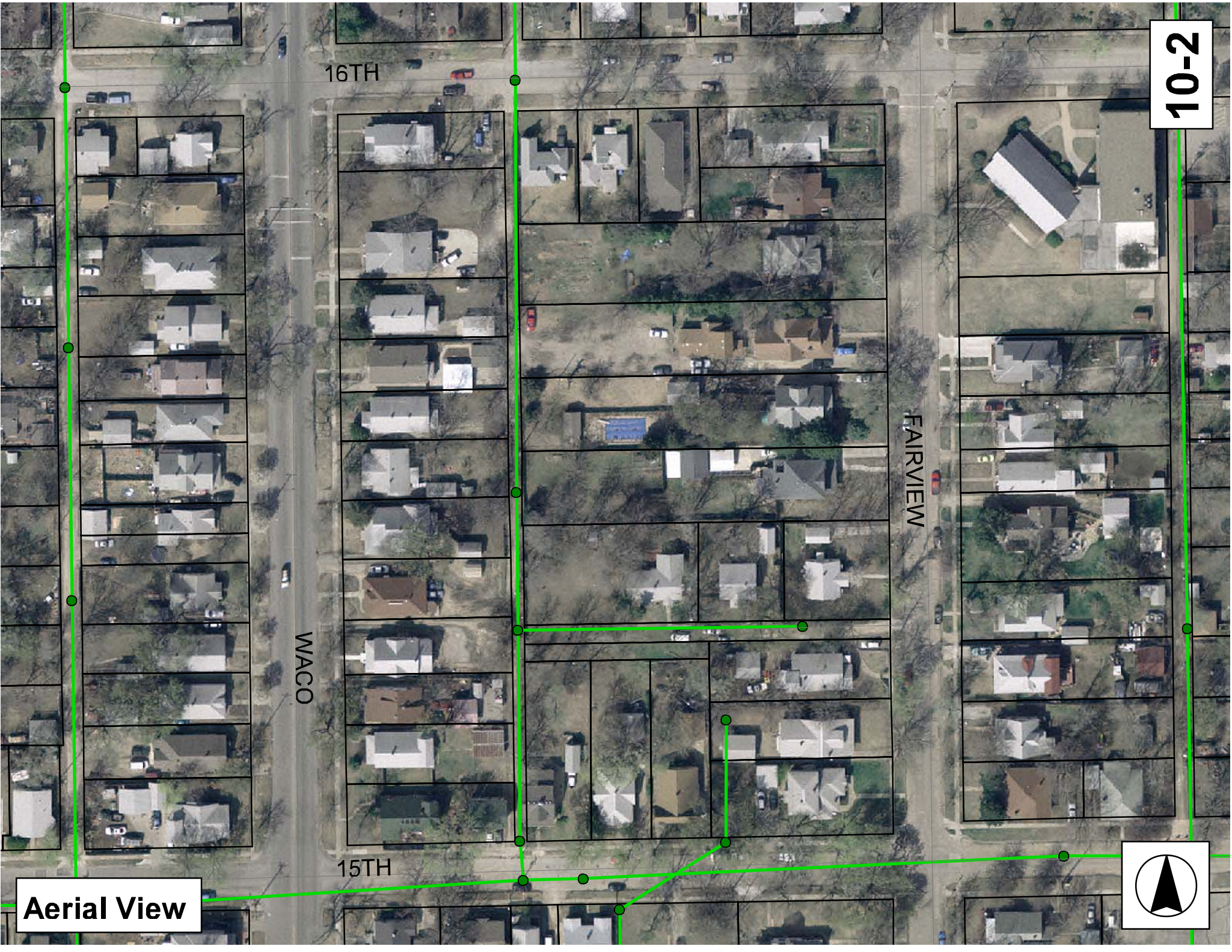
16TH

WACO

FAIRVIEW

15TH

Aerial View



# Television Inspection Master Report

4/30/2007  
9:38 AM

US Structure: 5449-186  
DS Structure: 5449-184U

1630 N WACO AVE  
1620 N WACO AVE

Date Insp: 2/8/2006  
Dir Televised: Upstream To Downstream

Basin: C03F

## Pipe Information

A-091

Shape: Round Length Status: Project No.:  
Dia/Ht Width: 8 0 Material: VCP Index:  
Length: 114.3 Slope: 0.254 Surface:

Obs. #	VTR Counter	Distance	Location	Description	Rating	Obsrvd (gpm)	Est. (gpm)	Ratings Struct	Clean	Remain (gpm)	
1		0.0	US Manhole	5449-186	CO-0% - O2-20.9% - H2S-0% - LEL-0%						
2		14.0	Crown	Broken Pipe	3		0.010	60	0	0.010	
3		18.0	Crown	Crack-Radial	3		0.004	5	0	0.004	
4		21.0	West	Wye Service	1		0.000	0	0	0.000	
	1628 N. Waco -										
5		23.0	East	Sealed Off Wye	1		0.000	0	0	0.000	
6		24.0	Quad 2 / L-Rt	Crack-Radial	3		0.004	5	0	0.004	
7		36.0	Crown	Broken Pipe	3		0.010	60	0	0.010	
8		43.0	West	Sealed Off Wye	1		0.000	0	0	0.000	
		46.0	East	Sealed Off Wye							
9		48.0	Crown	Broken Pipe	2		0.008	44	0	0.008	
10		57.0	Crown	Crack-Radial	3		0.004	5	0	0.004	
11		68.0	West	Wye Service	1		0.000	0	0	0.000	
	1624 N. Waco -										
12		69.0	Invert	Broken Pipe	4		0.030	78	0	0.030	
13		70.0		Sealed Off Wye East	1		0.000	0	0	0.000	
14		92.0		Sealed Off Wye West	1		0.000	0	0	0.000	
15		94.0	East	Wye Service	1		0.000	0	0	0.000	
	214 W. 15th N. -										
16		96.0		Observation Hole	1		0.000	0	0	0.000	
17		115.0	DS Underground Union	5449-184U							

10-3

# Television Inspection Master Report

4/30/2007  
9:38 AM

US Structure: 5449-184U      1620 N WACO AVE      Date Insp: 2/8/2006      Basin: C03F  
DS Structure: 5449-182      230 W 15TH ST N      Dir Televised: Upstream To Downstream

## Pipe Information

Project No.: A-091    Dia: 8      Material: VCP      Length: 176.8      Slope: 0.249

## Inspection Information

Crew: 692      Percent Full: 10      Tape ID: 5001  
Weather: Sunny      Purpose: TV Existing Line      Counter Start: 1.09.08  
Surface Cond: Unpaved Alley      Flow: Normal Flow      Counter Stop: 1.23.24

Obs. #	VTR	Counter	Distance	Location	Description	Rating	Obsrvd (gpm)	Est. (gpm)	Ratings		
									Struct	Clean	Remain (gpm)
1			0.0	US Underground Union	5449-184U	1	0.000	0	0	0.000	
2			4.0	Quad 1 / U-Rt	Crack-Radial	2	0.002	2	0	0.002	
3			5.0	West	Wye Service	2	0.000	0	0	0.000	
1620 N. Waco – some roots inside											
4			7.0		Sealed Off Wye East	1	0.000	0	0	0.000	
5			24.0	Crown	Crack-Radial	3	0.004	5	0	0.004	
6			29.0		Sealed Off Wye West	1	0.000	0	0	0.000	
7			31.0		Sealed Off Wye East	1	0.000	0	0	0.000	
8			53.0		Sealed Off Wye West	1	0.000	0	0	0.000	
9			55.0		Sealed Off Wye East	1	0.000	0	0	0.000	
10			56.0	Crown	Crack-Radial	3	0.004	5	0	0.004	
11			78.0	West	Wye Service	1	0.000	0	0	0.000	
1610 N. Waco -											
12			82.0		Observation Hole	1	0.000	0	0	0.000	
13			86.0	Crown	Broken Pipe	2	0.008	44	0	0.008	
14			93.0	Crown	Crack-Horizontal	3	0.004	5	0	0.004	
15			96.0	East	Wye Service	1	0.000	0	0	0.000	
230 W. 15th N. – roots inside											
16			97.0	Invert	Broken Pipe	3	0.010	60	0	0.010	
17			102.0	West	Wye Service	2	0.000	0	0	0.000	
1608 N. Waco – roots inside											
18			104.0		Sealed Off Wye East	1	0.000	0	0	0.000	
19			107.0	Quad 4 / U-Lt	Crack-Horizontal	2	0.002	2	0	0.002	
20			115.0	Quad 1 / U-Rt	Crack-Radial	3	0.004	5	0	0.004	
21			123.0	Crown	Broken Pipe	2	0.008	44	0	0.008	
22			126.0		Sealed Off Wye West	1	0.000	0	0	0.000	
23			127.0	Quad 4 / U-Lt	Crack-Radial	3	0.004	5	0	0.004	
24			128.0		Sealed Off Wye East	1	0.000	0	0	0.000	
25			134.0	East	Break-In Conn	1	0.001	0	0	0.001	
230 W. 15th. N. -											
26			135.0	West	Break-In Conn	1	0.001	0	0	0.001	
1602 N. Waco – jagged tap											
27			137.0	West	Wye Service	1	0.000	0	0	0.000	
1602 N. Waco -											
28			138.0	Quad 4 / U-Lt	Broken Pipe	2	0.008	44	0	0.008	
29			146.0	Crown	Broken Pipe	3	0.010	60	0	0.010	
30			151.0		Sealed Off Wye West	1	0.000	0	0	0.000	
31			152.0		Sealed Off Wye East	1	0.000	0	0	0.000	
32			158.0	Crown	Crack-Radial	3	0.004	5	0	0.004	
33			166.0	Crown	Crack-Radial	3	0.004	5	0	0.004	
34			170.0	Crown	Broken Pipe	3	0.010	60	0	0.010	
35			172.0	DS Manhole	5449-182 (Inside Drop at the Manhole)						

10-4