



Defect Listing Plot

Pipe Segment Refere... 12	City WICHITA	Street MCLEAN BLVD	Material PolyVinyl Chloride	Location C... Easement/R...	Sewer Use Stormwater
Upstream MH 2+14.61	Total Length	Up Rim to Invert 14	Shape Circular	Location Details LINE 0	
DS Manhole 0+60.90	Length surveyed 149.7	Down Rim to Invert 12.5	Height 18	Width 18	Pipe Joint...
SPR 0	MPR 0	PO Number 603 PPD 133119		Customer DONDLINGER	
SPRI 0	MPRI 0	Work Order		Purpose Pre-Acceptance	
QSR 0000	QMR 0000	Direction Downstream	Date 20200124	Media label	
OPR 0	Surveyed By Chuck	Pre-Cleaning Jetting	Time 11:12	Weather Light Rain	
OPRI 0	Certificate Number U-0118-070300421		End Time 11:18	Additional Info TV14	
	Date Cleaned 20200124				

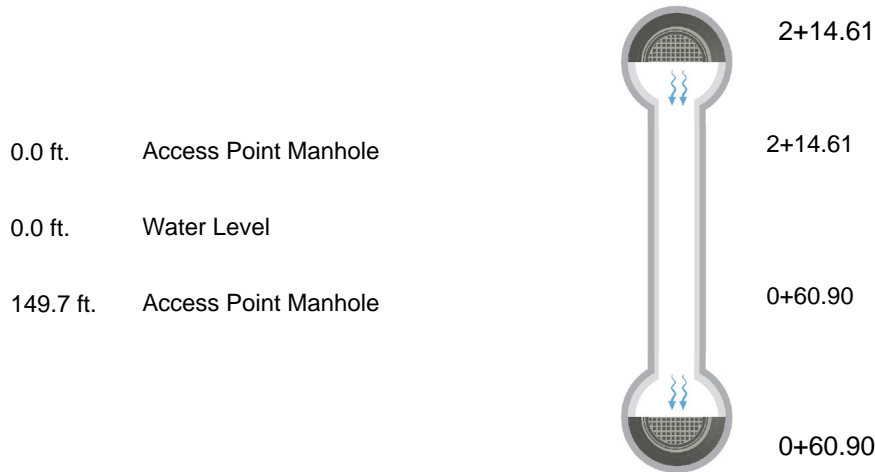
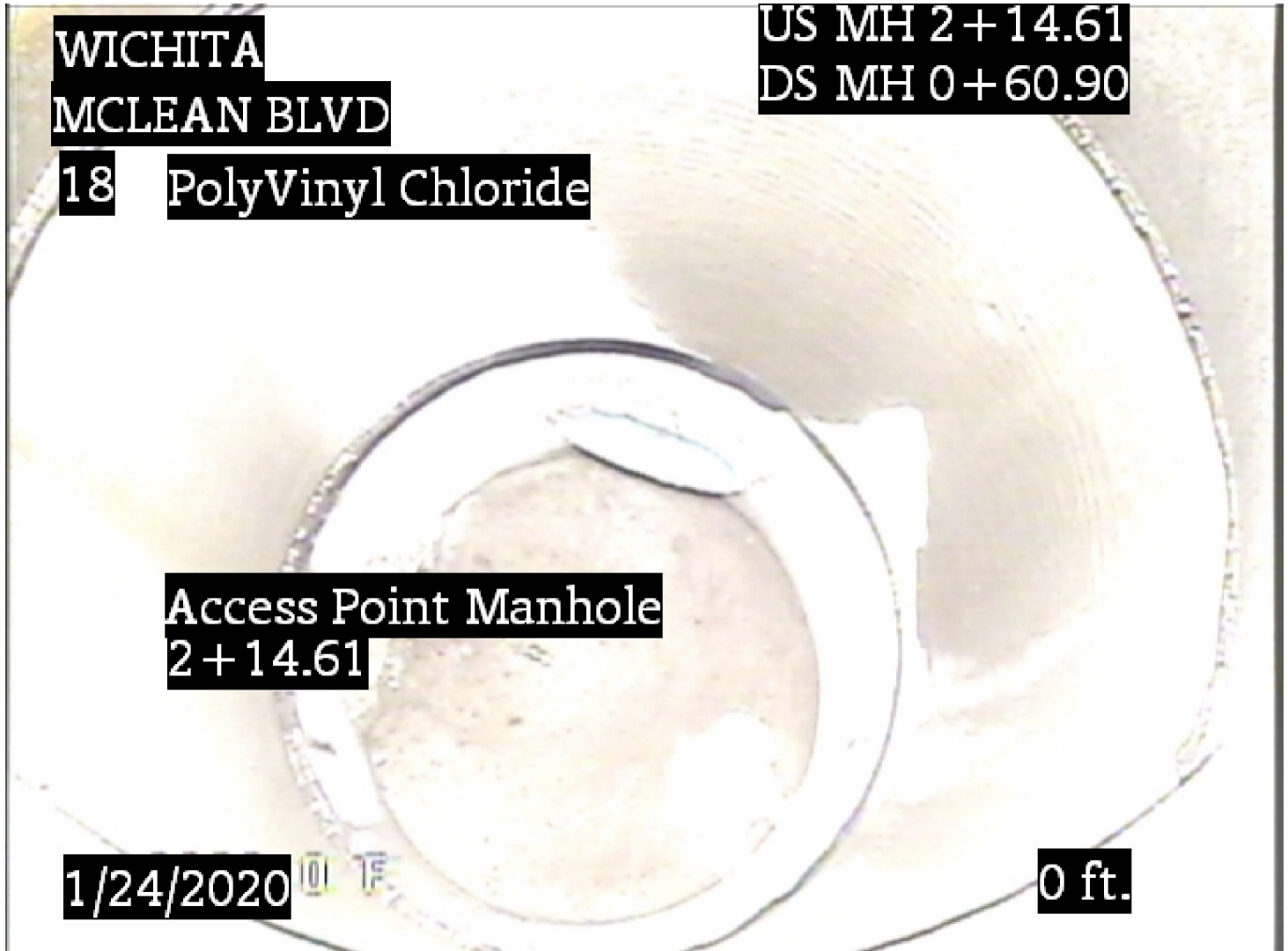




Image Report 1/Page

Pipe Segment Refere... 12	City WICHITA	Street MCLEAN BLVD	Material PolyVinyl Chloride	Location C... Easement/R...	Sewer Use Stormwater
Upstream MH 2+14.61	Total Length	Up Rim to Invert 14	Shape Circular	Location Details LINE 0	
DS Manhole 0+60.90	Length surveyed 149.7	Down Rim to Invert 12.5	Height 18	Width 18	Pipe Joint...

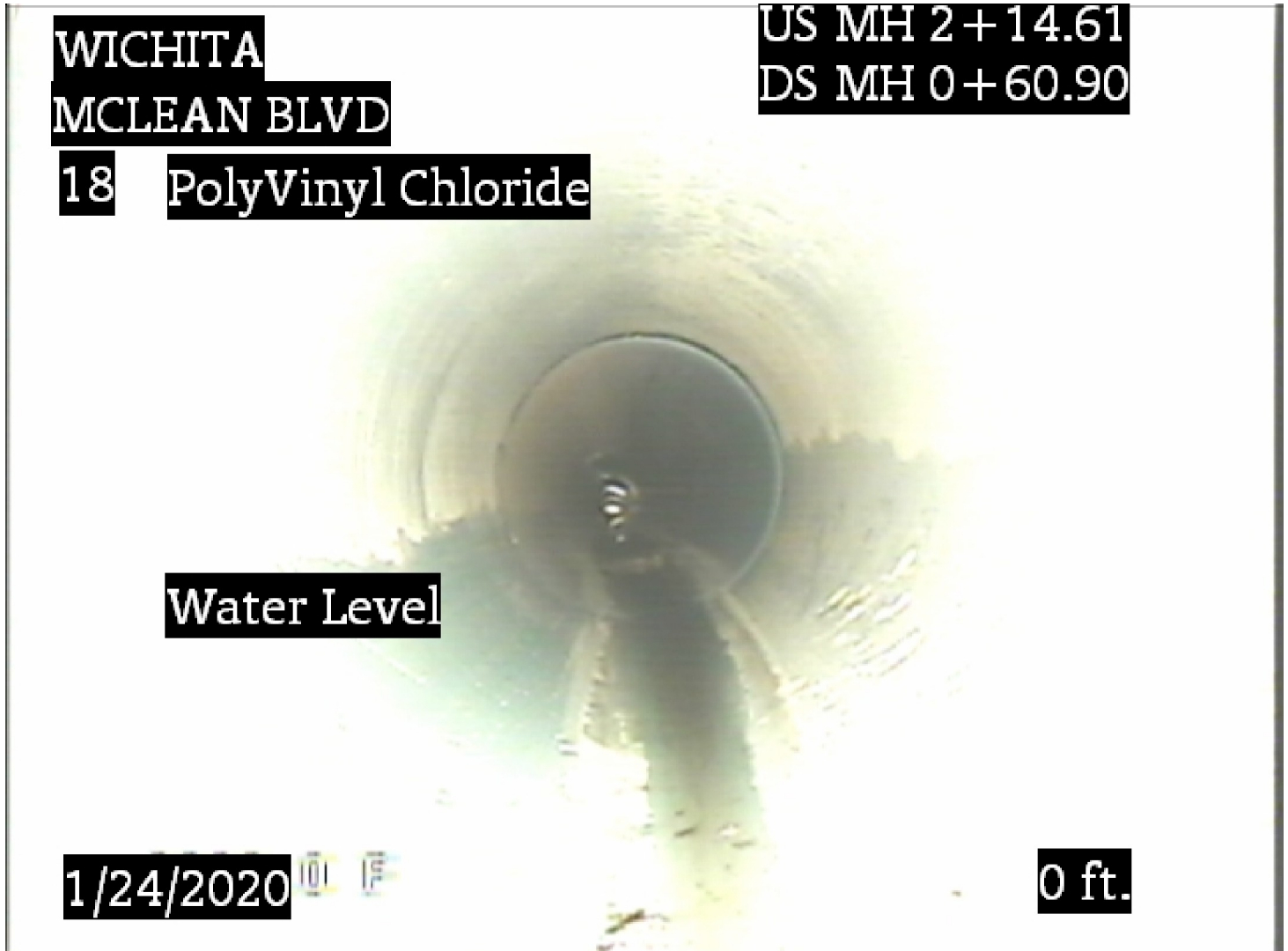


Distance:	0.0 ft.
Condition:	Access Point Manhole
Grade:	0
Remarks:	2+14.61



Image Report 1/Page

Pipe Segment Refere... 12	City WICHITA	Street MCLEAN BLVD	Material PolyVinyl Chloride	Location C... Easement/R...	Sewer Use Stormwater
Upstream MH 2+14.61	Total Length	Up Rim to Invert 14	Shape Circular	Location Details LINE 0	
DS Manhole 0+60.90	Length surveyed 149.7	Down Rim to Invert 12.5	Height 18	Width 18	Pipe Joint...

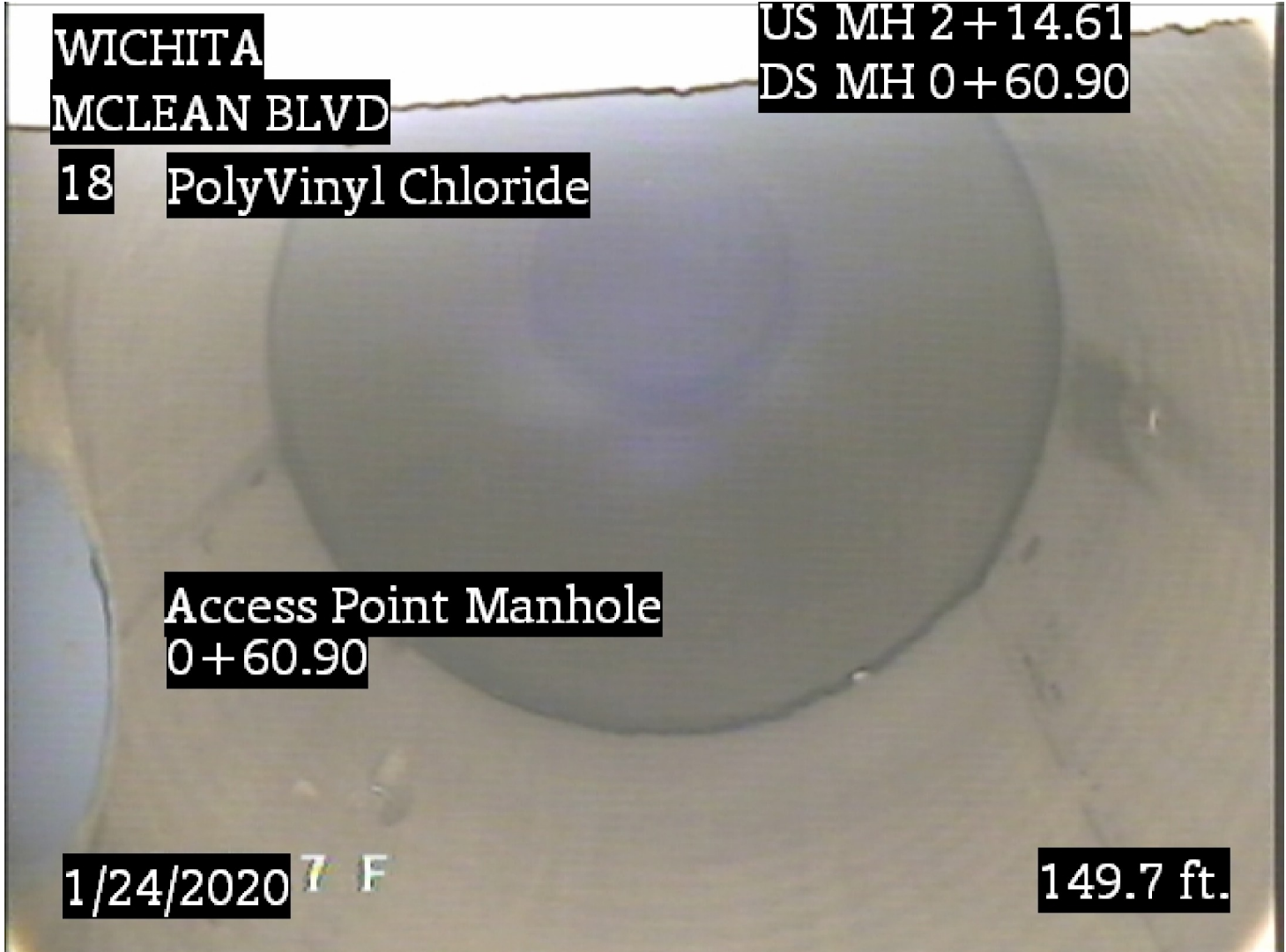


Distance:	0.0 ft.
Condition:	Water Level
Grade:	0
Remarks:	N/A



Image Report 1/Page

Pipe Segment Refere... 12	City WICHITA	Street MCLEAN BLVD	Material PolyVinyl Chloride	Location C... Easement/R...	Sewer Use Stormwater
Upstream MH 2+14.61	Total Length	Up Rim to Invert 14	Shape Circular	Location Details LINE 0	
DS Manhole 0+60.90	Length surveyed 149.7	Down Rim to Invert 12.5	Height 18	Width 18	Pipe Joint...



Distance:	149.7 ft.
Condition:	Access Point Manhole
Grade:	0
Remarks:	0+60.90