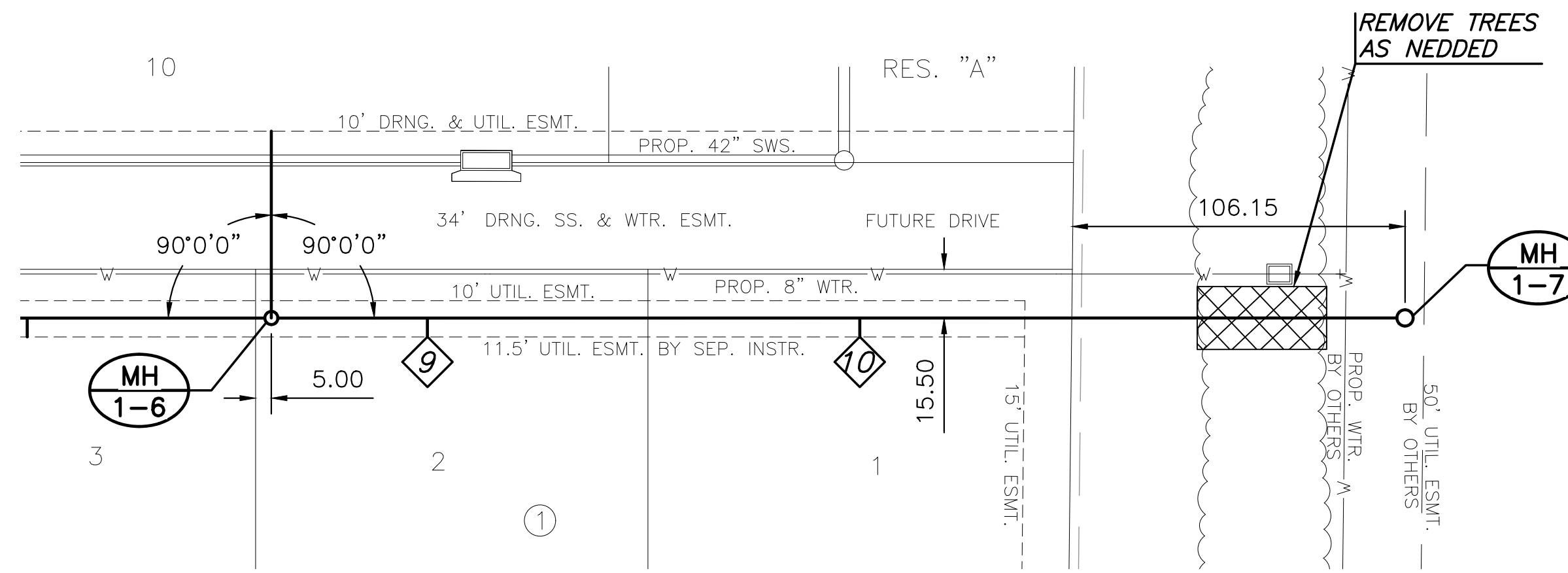


PLOTTED: Thursday, January 30, 2025 @ 02:20PM

J:\PROJECTS\2024\240110178_KINGS OF FREIGHT\240178_CAD\SHOTS\05_CIVIL\SAN\240178_05_CU103-S.DWG

THE KING COAST ADDITION

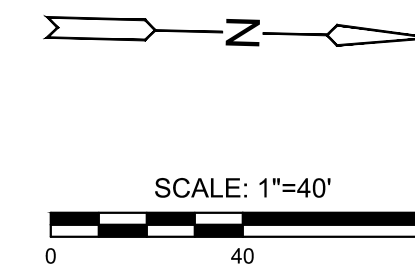


SEWER SERVICE RISER TABLE						FOR INFORMATION ONLY	
NO.	TYPE	LOCATION			STATION	APPROXIMATE LENGTH	
		LOT NO.	BLOCK NO.	LINE NO.		VERTICAL (FT)	HORIZONTAL (FT)
9	8X6" SADDLE	2	1	1	25+52/RT.	13'	6'
10	8X6" SADDLE	1	1	1	26+89/RT.	15'	6'

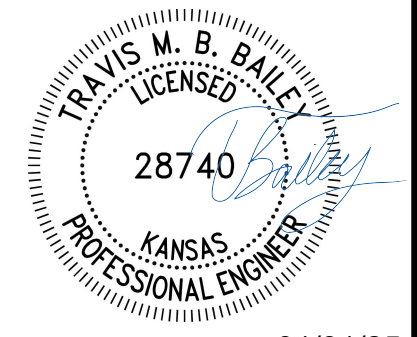
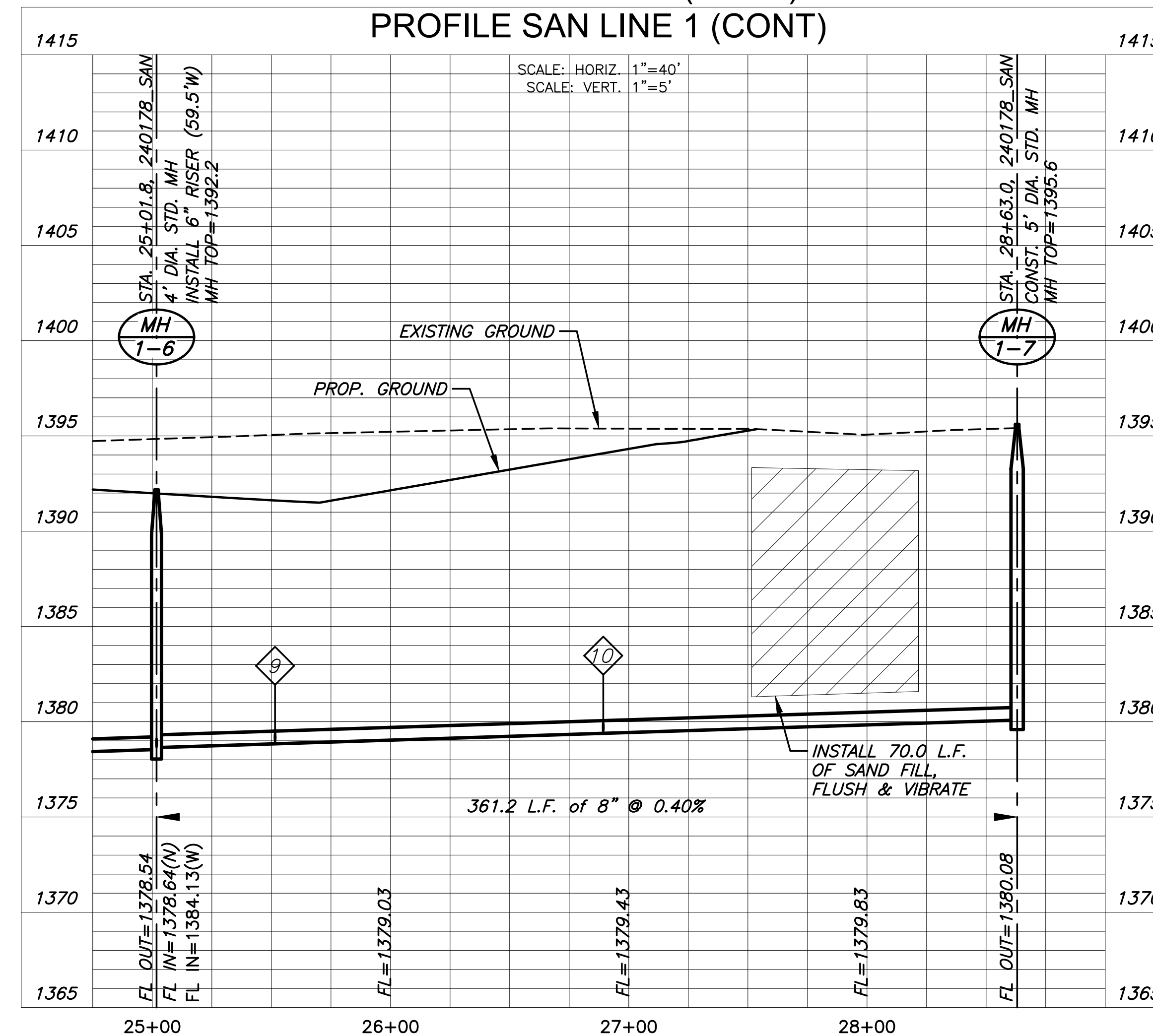
UNPLATTED

THE KING COAST ADDITION

NOTE:
CONTRACTOR TO VERIFY THE DEPTH AND LOCATION OF EXISTING UTILITIES PRIOR TO CONSTRUCTION.



PLAN SAN LINE 1 (CONT)
PROFILE SAN LINE 1 (CONT)



01/31/25

LATERAL SANITARY SEWER

THE KINGS COAST ADDITION

WICHITA, KANSAS

LINE 1 (CONT.)

PROJECT NO. 468-2024-021360

SCALE 1"=40'

DRAWN DESIGNED CHECKED
BWS DFL TMBB

NO.	REVISION	DATE
0	ISSUED FOR CONSTRUCTION	01/31/25

SHEET NO. CU103-S
04 OF 14

©2025 MKEC ENGINEERING, INC. ALL RIGHTS RESERVED. WWW.MKEC.COM. THESE DRAWINGS AND THEIR CONTENTS, INCLUDING, BUT NOT LIMITED TO, ALL CONCEPTS, DESIGNS, & DETAILS ARE THE EXCLUSIVE PROPERTY OF MKEC ENGINEERING, INC. (MKEC), AND MAY NOT BE USED OR REPRODUCED IN ANY WAY WITHOUT THE EXPRESS CONSENT OF MKEC.