

# GENERAL NOTES:

- THE CONTRACTOR SHALL COMPLY WITH ALL APPLICABLE SAFETY REGULATIONS. ALL CONSTRUCTION SHALL BE COMPLETED FOLLOWING CURRENT CITY STANDARD SPECIFICATIONS AND SPECIAL PROVISIONS.
- CONTRACTOR WILL BE REQUIRED TO PROVIDE NOTICE TO UTILITY COMPANIES A MINIMUM OF SEVENTY-TWO (72) HOURS PRIOR TO ANY EXCAVATION, AS FOLLOWS:  
KANSAS ONE-CALL 687-2470  
THE CONTRACTOR MUST NOTIFY THE FOLLOWING IN CASE OF AN EMERGENCY:  
AT&T 1-800-246-8464  
BLACK HILLS ENERGY 1-800-694-8989  
CITY OF WICHITA WATER & SEWER 1-316-219-8921  
CITY OF WICHITA STORMWATER 1-316-268-4090  
CITY OF WICHITA TRAFFIC 1-316-268-4034  
COX COMMUNICATIONS 1-888-249-3530  
KANSAS GAS SERVICE 1-888-482-4950  
EVERGY 1-800-544-4857
- UTILITY SERVICE LINES, POLES, ETC. ARE TO BE ADJUSTED AS NECESSARY BY OTHERS PRIOR TO CONSTRUCTION UNLESS THE PLANS SPECIFICALLY CALL FOR THEIR ADJUSTMENT BY THE CONTRACTOR OR UNLESS THE PLANS SPECIFICALLY IDENTIFY A UTILITY TO BE ADJUSTED BY ITS OWNER DURING CONSTRUCTION. EXISTING UTILITIES AND THEIR LOCATION, AS SHOWN ON THE PLANS, REPRESENT THE BEST INFORMATION OBTAINABLE FOR DESIGN. THE CONTRACTOR WILL BE REQUIRED TO WORK AROUND EXISTING UTILITIES WITHIN THE RIGHT-OF-WAY WHICH DO NOT CONFLICT WITH PROPOSED CONSTRUCTION.
- RUBBLE FROM THE REMOVAL OF MISCELLANEOUS STRUCTURES AND EXCESS EXCAVATION WHICH IS TO BE WASTED SHALL BE DISPOSED OF ON SITES TO BE PROVIDED BY THE CONTRACTOR. THESE SITES SHALL BE APPROVED BY THE ENGINEER AS TO SUITABILITY, APPEARANCE AND SITE LOCATION. LOCATIONS, IN THE OPINION OF THE ENGINEER, THAT WILL LEAVE AN UNSIGHTLY APPEARANCE WILL NOT BE APPROVED. ALL DISPOSAL SITES MUST BE APPROVED BY THE KANSAS DEPARTMENT OF HEALTH AND ENVIRONMENT. MATERIAL EITHER STOCKPILED OR DISPOSED OF IN A FLOOD PLAIN WILL REQUIRE A KANSAS STATE BOARD OF AGRICULTURE PERMIT. ANY MATERIAL DUMPED IN WATERS OF THE UNITED STATES OR WETLAND IS SUBJECT TO U.S. CORPS OF ENGINEERS PERMITTING REGULATIONS. ANY MATERIAL BURIED OR STOCKPILED BEYOND APPROVED CONSTRUCTION LIMITS WILL REQUIRE ADDITIONAL ARCHAEOLOGICAL INVESTIGATIONS UNLESS BURIED IN A PREVIOUSLY APPROVED BORROW LOCATION.
- TREES AND SHRUBS IN PUBLIC RIGHT-OF-WAY WHICH ARE IN DIRECT CONFLICT WITH PROPOSED NEW CONSTRUCTION SHALL BE REMOVED BY THE CONTRACTOR WITH THE CITY ENGINEER'S APPROVAL. TREES AND SHRUBS WHICH ARE NOT IN DIRECT CONFLICT WITH PROPOSED NEW CONSTRUCTION SHALL BE SAVED AND PROTECTED FROM DAMAGE.
- THE CONTRACTOR SHALL GIVE ALL PROPERTY OWNERS AND/OR TENANTS OF DEVELOPED PROPERTY ABUTTING THE CONSTRUCTION OF THIS PROJECT A MINIMUM OF TEN (10) DAYS NOTICE PRIOR TO START OF CONSTRUCTION.
- THE CONTRACTOR SHALL BE RESPONSIBLE FOR PRESERVING PROPERTY IRONS. THE CONTRACTOR WILL BE REQUIRED TO RE-ESTABLISH ANY PROPERTY IRONS WHICH ARE DAMAGED OR DESTROYED BY HIS CONSTRUCTION OPERATIONS. SUCH IRONS SHALL BE RE-ESTABLISHED BY A LICENSED LAND SURVEYOR IN ACCORDANCE WITH STATE LAWS.
- THE ENGINEERING DIVISION SHALL FIELD LOCATE WATER VALVES ONE TIME DURING CONSTRUCTION WHEN REQUESTED BY THE CONTRACTOR. IT SHALL BE THE CONTRACTOR'S RESPONSIBILITY TO PRESERVE SUCH FIELD LOCATIONS DURING THE CONSTRUCTION PROCESS. WATER VALVES, VALVE BOXES OR FIRE HYDRANTS DAMAGED DURING CONSTRUCTION SHALL BE REPAIRED BY CONTRACTOR AT HIS OWN EXPENSE. VALVE BOXES AND WATER METERS WITHIN THE PROJECT LIMITS SHALL BE ADJUSTED TO MATCH FINAL GRADES BY THE CONTRACTOR.
- THE CONTRACTOR SHALL NOTIFY THE CONSULTANT ENGINEER AND DAWNITA REINHARDT WITH THE CITY AT 316-268-4574 WITH THE CITY OF WICHITA WITH THE ANTICIPATED CONSTRUCTION START DATE AND NOTIFY THEM OF PROJECT COMPLETION.
- IF TRAFFIC WILL BE IMPACTED BY CONSTRUCTION, A TRAFFIC CONTROL PLAN MUST BE SUBMITTED AND APPROVED BY THE CITY TRAFFIC ENGINEER AT [TRAFFIC@WICHITA.GOV](mailto:TRAFFIC@WICHITA.GOV) BEFORE CONSTRUCTION CAN BEGIN. THE CONTRACTOR SHALL BE RESPONSIBLE FOR ALL TRAFFIC CONTROL MEASURES TO FACILITATE CONSTRUCTION. ALL CONSTRUCTION ZONE MARKINGS AND SIGNAGE SHALL CONFORM TO THE LATEST VERSION OF THE MANUAL ON UNIFORM TRAFFIC CONTROL DEVICES (MUTCD) AS PUBLISHED BY THE US DEPT. OF TRANSPORTATION, FEDERAL HIGHWAY ADMINISTRATION. ALL COSTS ASSOCIATED WITH CONSTRUCTION MARKINGS AND SIGNAGE SHALL BE THE CONTRACTORS RESPONSIBILITY.
- ALL ELEVATIONS SHOWN ARE NAVD 88.
- ALL AREAS DISTURBED DURING CONSTRUCTION THAT WILL NOT BE UNDER PROPOSED PAVEMENT SHALL BE RESTORED TO MATCH EXISTING CONDITIONS.

- ANY SIDEWALK, DRIVE APPROACH, OR STREET PAVEMENT REMOVED TO CONSTRUCT PROJECT MUST HAVE A PAVEMENT CUT PERMIT AND BE REPLACED BY THE CITY CONTRACTOR. PERMITS CAN BE OBTAINED BY CALLING 316-268-4501 OR 316-268-4480.
- CITY MAINTENANCE OF STORM SEWER ENDS AT THE LAST STRUCTURE IN THE EASEMENT OR RIGHT-OF-WAY.
- A PORTION OF EXCESS EXCAVATED MATERIAL SHALL BE MOUNDING AROUND MANHOLES WHICH EXTEND MORE THAN ONE (1) FOOT ABOVE THE EXISTING GROUND. SUCH MOUND SHALL BE CONSTRUCTED WITH NEW DEVELOPMENT A SIX (6) FOOT DIAMETER FLAT TOP WITH 4 TO 1 SIDE SLOPES DOWN TO THE ORIGINAL GROUND. THE ELEVATION OF THE FLAT TOP OF THE MOUND SHALL BE 0.4 FOOT BELOW THE TOP TO THE MANHOLE.
- CONTRACTOR SHALL LIMIT THE EXTENT OF TRENCH OPENINGS OVERNIGHT AND WEEKENDS TO LESS THAN 50 FEET.
- THE INSPECTING FIRM SHALL SUBMIT TO THE CITY STORMWATER MAINTENANCE DIVISION A DIGITAL COPY OF THE CITY INSPECTION OF THE CONDUITS AND STRUCTURES FOLLOWING CONSTRUCTION. THE DIGITAL FILE FORMATION SHALL BE COMPATIBLE WITH THE CITY INPUT TEMPLATE. A COPY OF THE TEMPLATE IS AVAILABLE UPON REQUEST AT 316-268-4090.
- THE CONTRACTOR SHALL PROTECT FROM DAMAGE AND SUPPORT EXISTING UTILITIES THROUGH CONSTRUCTION AS APPROVED BY THE UTILITY OWNER AND THE ENGINEER AT THE CONTRACTORS EXPENSE.
- THE CONTRACTOR SHALL RESTORE ALL DITCHES, SWALES, ROAD SHOULDERS, ENTRANCES AND BANK LINES TO THEIR ORIGINAL SLOPES AND GRADES EXCEPT AS SHOWN OTHERWISE.
- THE CONTRACTOR SHALL USE BEST MANAGEMENT PRACTICES (BMP'S) TO PREVENT ERODED SOIL FROM ENTERING DITCHES, CULVERTS AND DRAINAGE AREAS. THE CONTRACTOR SHALL FOLLOW THE INTENT OF THE BMP'S WHICH ACT AS A GUIDELINE.
- EACH BIDDER SHALL VISIT THE SITE OF THE PROJECT BEFORE SUBMITTING A PROPOSAL IN ORDER TO BECOME BETTER INFORMED OF THE EXISTING FIELD CONDITIONS AND OBSTACLES WHICH MIGHT BE ENCOUNTERED DURING CONSTRUCTION. EACH BIDDER SHOULD UNDERSTAND THAT NO ADDITIONAL COMPENSATION WILL BE AWARDED FOR EXTRA WORK THAT SHOULD HAVE BEEN EVALUATED PRIOR TO BIDDING.
- THE PRECAST MANUFACTURER SHALL PROVIDE A SEALED DESIGN DETAIL FOR ALL PRECAST ITEMS USED ON THE PROJECT TO INSURE THE INTENT OF THE PLANS ARE MET.
- BACKFILL SAND FLUSH & VIBRATE ALL UTILITIES UNDER PAVEMENT. ALL TRENCHING AND PIPE EMBEDMENT TO BE PER CITY OF WICHITA STANDARD SPECIFICATIONS AND SPECIAL PROVISIONS.
- ALL EXCAVATION FROM PIPE AND STRUCTURE REMOVAL TO BE BACKFILLED IN 6" LIFTS AND COMPACTED TO 95% OF STANDARD PROCTOR ASTM D698. FILL MATERIAL TO BE APPROVED BY PROJECT ENGINEER.

### SAFETY NOTICE TO CONTRACTOR

IN ACCORDANCE WITH GENERALLY ACCEPTED CONSTRUCTION PRACTICES, THE CONTRACTOR WILL BE SOLELY AND COMPLETELY RESPONSIBLE FOR CONDITIONS OF THE JOB SITE, INCLUDING SAFETY OF ALL PERSONS AND PROPERTY DURING PERFORMANCE OF THE WORK. THIS REQUIREMENT WILL APPLY CONTINUOUSLY AND NOT BE LIMITED TO NORMAL WORKING HOURS.

### WARRANTY / DISCLAIMER

THE DESIGNS REPRESENTED IN THESE PLANS ARE IN ACCORDANCE WITH ESTABLISHED PRACTICES OF CIVIL ENGINEERING FOR THE DESIGN FUNCTIONS AND USES INTENDED BY THE OWNER AT THIS TIME. HOWEVER, NEITHER KAW VALLEY ENGINEERING, INC NOR ITS PERSONNEL CAN OR DO WARRANTY THESE DESIGNS OR PLANS AS CONSTRUCTED, EXCEPT IN THE SPECIFIC CASES WHERE KAW VALLEY ENGINEERING PERSONNEL INSPECT AND CONTROL THE PHYSICAL CONSTRUCTION ON A CONTEMPORARY BASIS AT THE SITE.

### CAUTION - NOTICE TO CONTRACTOR

THE CONTRACTOR IS SPECIFICALLY CAUTIONED THAT THE LOCATION AND/OR ELEVATION OF EXISTING UTILITIES AS SHOWN ON THESE PLANS IS BASED ON RECORDS OF THE VARIOUS UTILITY COMPANIES AND, WHERE POSSIBLE, MEASUREMENTS TAKEN IN THE FIELD. THE INFORMATION IS NOT TO BE RELIED ON AS BEING EXACT OR COMPLETE. THE CONTRACTOR MUST CALL THE APPROPRIATE UTILITY COMPANY AT LEAST 72 HOURS BEFORE ANY EXCAVATION TO REQUEST EXACT FIELD LOCATION OF UTILITIES. IT SHALL BE THE RESPONSIBILITY OF THE CONTRACTOR TO RELOCATE ALL EXISTING UTILITIES WHICH CONFLICT WITH PROPOSED IMPROVEMENTS SHOWN ON THE PLANS.

**THE CONTRACTOR SHALL EXPOSE EXISTING UTILITIES AT LOCATIONS OF POSSIBLE CONFLICTS PRIOR TO ANY CONSTRUCTION.**

# STORM SEWER IMPROVEMENTS

to serve

# LOT 2, WICHITA LAND ADDITION CITY OF WICHITA, KANSAS

GARY JANZEN, P.E. CITY ENGINEER

PROJECT NUMBER  
2022-000769PPD(56030970)

### AS BUILTS

Contractor:

McCullough  
Excavation

5/01/2023

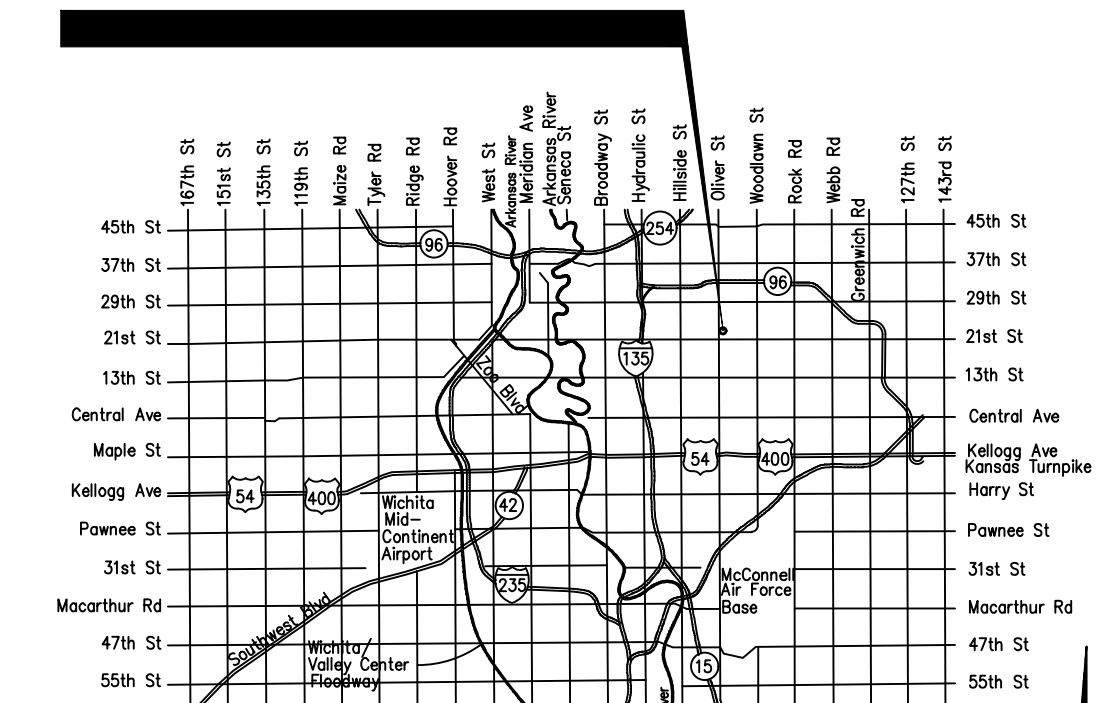
Project Inspector:

Larry Gann



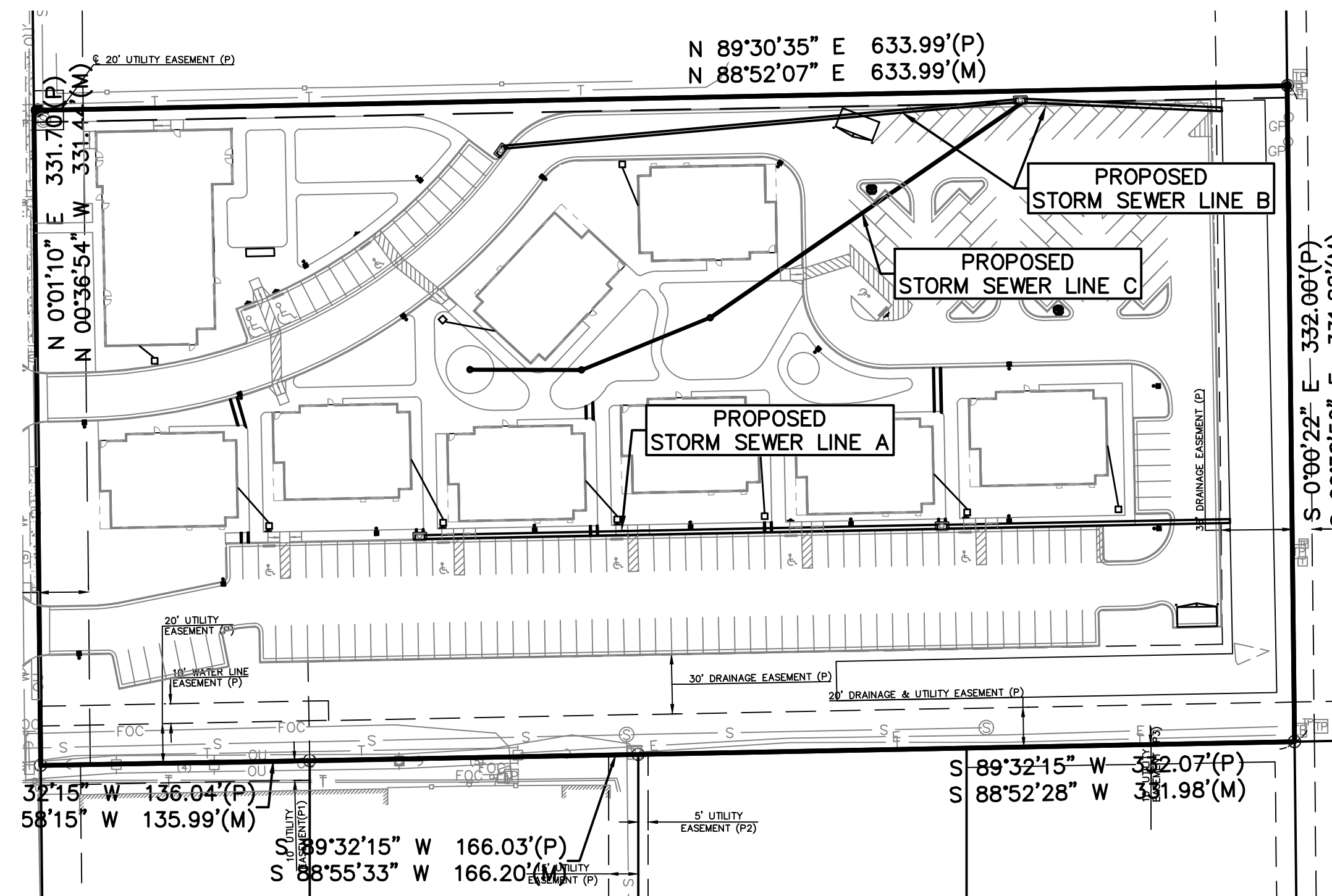
117 E. Lewis, Wichita, KS 67202 (316)264-0242

### PROJECT LOCATION



### VICINITY MAP

NOT TO SCALE



THE COORDINATES PROVIDED IN THESE PLANS ARE FOR INFORMATION AND CHECKING PURPOSES ONLY. IT IS THE CONTRACTOR'S RESPONSIBILITY TO CALCULATE CONSTRUCTION STAKING COORDINATES ACCORDING TO THE DIMENSIONS SHOWN ON THESE PLANS. CONTRACTOR SHALL VERIFY THE ACCURACY OF THE COORDINATES SHOWN BEFORE CONSTRUCTION.

THIS PLAN SHEET IS PART OF AN OVERALL KAW VALLEY ENGINEERING PLAN SET FOR THE SPECIFIC IMPROVEMENTS CONTEMPLATED THEREIN. AS SUCH, THE INFORMATION REFLECTED HEREIN SHOULD ONLY BE INTERPRETED WITHIN THE CONTEXT OF THE COMPLETE PLAN SET.



SHAWN R. BYRAN  
PROFESSIONAL ENGINEER

### INDEX TO SHEETS:

- TITLE SHEET
- STORM SEWER PLAN AND PROFILE
- STORM SEWER PLAN AND PROFILE
- STORM SEWER PLAN AND PROFILE
- EROSION CONTROL PLAN
- CURB & INLET PROTECTION DETAIL
- SILT FENCE BARRIER DETAIL
- STRAW BALE BARRIER DETAIL
- STREET IMPROVEMENT PROJECTS
- SUBDIVISION DEVELOPMENT PROCESS
- TYPE 1 CURB INLET DETAIL
- MH FRAME & COVER DETAIL
- END SEC., COUPLER & GRATE
- NYLOPLAST DETAIL
- WEIR DETAIL
- PLAT

### DATUM BENCHMARK:

VERTICAL DATUM IS NAVD 88 DERIVED FROM USING THE WICHITA NTRIP NETWORK ORTHOMETRIC HEIGHT WAS DETERMINED USING THE GEOID 18 MODEL.

### BENCHMARKS:

BM #61: SQUARE CUT SET ON BACK OF CURB ON EAST SIDE OF PINECREST AVENUE NEAR FIRE HYDRANT AT SOUTHWEST CORNER OF SITE. ELEV=1395.66

BM #62: SQUARE CUT SET ON WEST SIDE OF SIDEWALK ON EAST SIDE OF PINECREST AVENUE IN LINE OF SPLIT RAIL FENCE TO THE EAST NEAR NORTHWEST CORNER OF SITE. ELEV=1388.47

**Stormwater Certification:**  
New Development  
Stormwater Permit # SW02022-0053  
NOI Permit # S-AR94-1777 KSR120742  
These construction plans were prepared in accordance with the current Stormwater Management Regulations as set forth in the City of Wichita's Stormwater Management Ordinance 16.32 and the policies/guidelines presented in the Wichita/Sedgwick County Stormwater Manual.  
Disturbed Area = 210,295 SF (4.83 ACRES ±)  
Water Quality Treatment: OFF SITE BMP PROGRAM  
Downstream Channel Protection: N/A  
Detention: ONSITE POND  
The BMP used for this development is: OFF SITE BMP PROGRAM

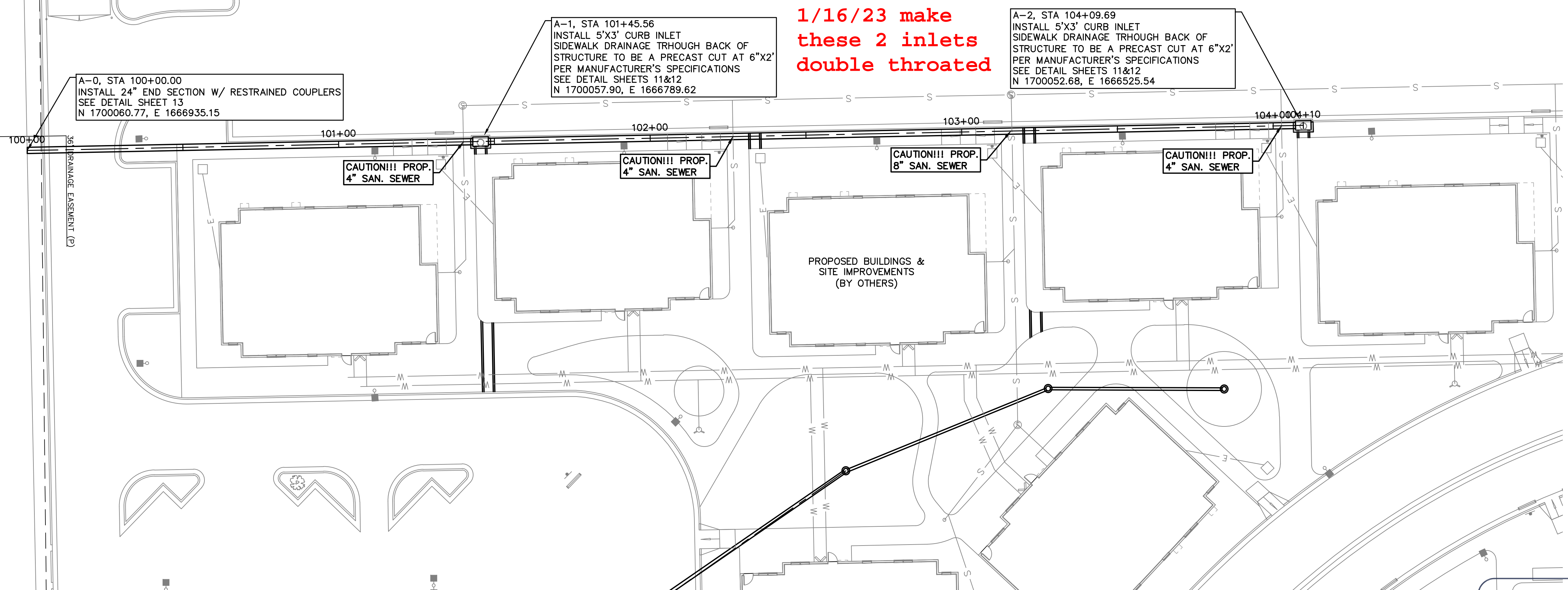
APPROVED AS NOTED  
BY WICHITA PUBLIC WORKS ENGINEERING  
AND STORMWATER DIVISION  
Engineering Approved by Shawn Mellies 1/11/23  
Stormwater Approved by Joe Hickle 1/11/23  
NOTE TO CONTRACTORS  
Inspection and testing for this project is to be provided by a Licensed Consulting Engineering Firm under contract with the Owner/Developer. Said inspection to be in accordance with the City of Wichita standard construction engineering practices and certified by a Licensed Professional Engineer in the state of Kansas. No work shall be performed the Contractor without such inspection nor shall any work be commenced without written authorization by City Engineering. All Construction and Materials shall comply with the current City of Wichita Specifications and Standards and Special Provisions. (on file and available at Wichita.gov).  
An approved copy of these plans signed by City staff are required on-site.

JANUARY 2023

PROJ. NO. G21\_2066 DSN: EAM SHAWN R. BRYAN  
CFN: 2066DTS DWN: EAM ENGINEER  
EIS # 28898  
200 N. EMPORIA, SUITE 100  
WICHITA, KANSAS 67202  
PH. (316) 440-4304 | FAX (316) 440-4309  
www.kveng.com | www.kveng.com  
**KAW VALLEY ENGINEERING**  
KAW VALLEY ENGINEERING, INC., IS AUTHORIZED TO OFFER ENGINEERING SERVICES BY KANSAS STATE CERTIFICATE OF AUTHORIZATION # E-113. EXPIRES 12/31/22

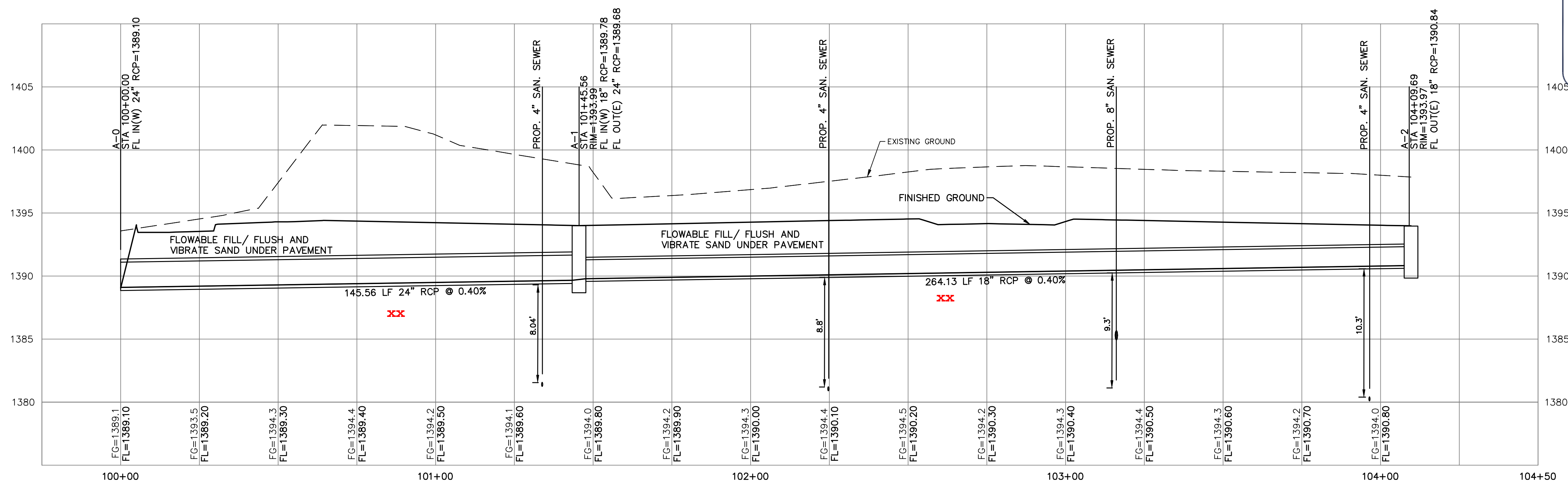
S 0°00'22" E 332.00'(P)  
S 00°38'50" E 331.88'(M)

Per Shaw Bryan email  
1/16/23 make  
these 2 inlets  
double throated



STORM LINE A

3.13'



**AS BUILTS**

117 E. Lewis,  
Wichita, KS 67202 (316)264-0242

SRB	CHK
EAM	DWN
EAM	DSN
INITIAL RELEASE	DESCRIPTION
1/11/23	REV DATE
0	REV

SHAWN R. BRYAN  
ENGINEER  
KS # 17899

**KAW VALLEY ENGINEERING**

200 N. EMPORIA, SUITE 100  
WICHITA, KANSAS 67202  
PH. (316) 440-4304 | FAX (316) 440-4309  
www.kveeng.com | www.kveing.com

KAW VALLEY ENGINEERING, INC., IS AUTHORIZED TO OFFER ENGINEERING SERVICES BY KANSAS STATE CERTIFICATE OF AUTHORIZATION # E-113. EXPIRES 12/31/22

**SPECTRA STUDENT HOUSING**  
21ST STREET & PINECREST AVENUE  
WICHITA, KANSAS

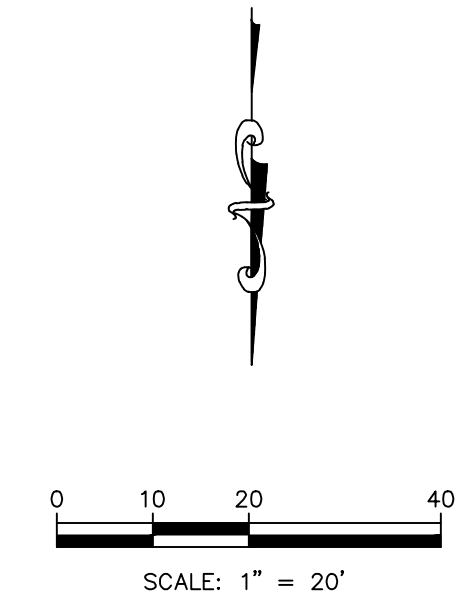
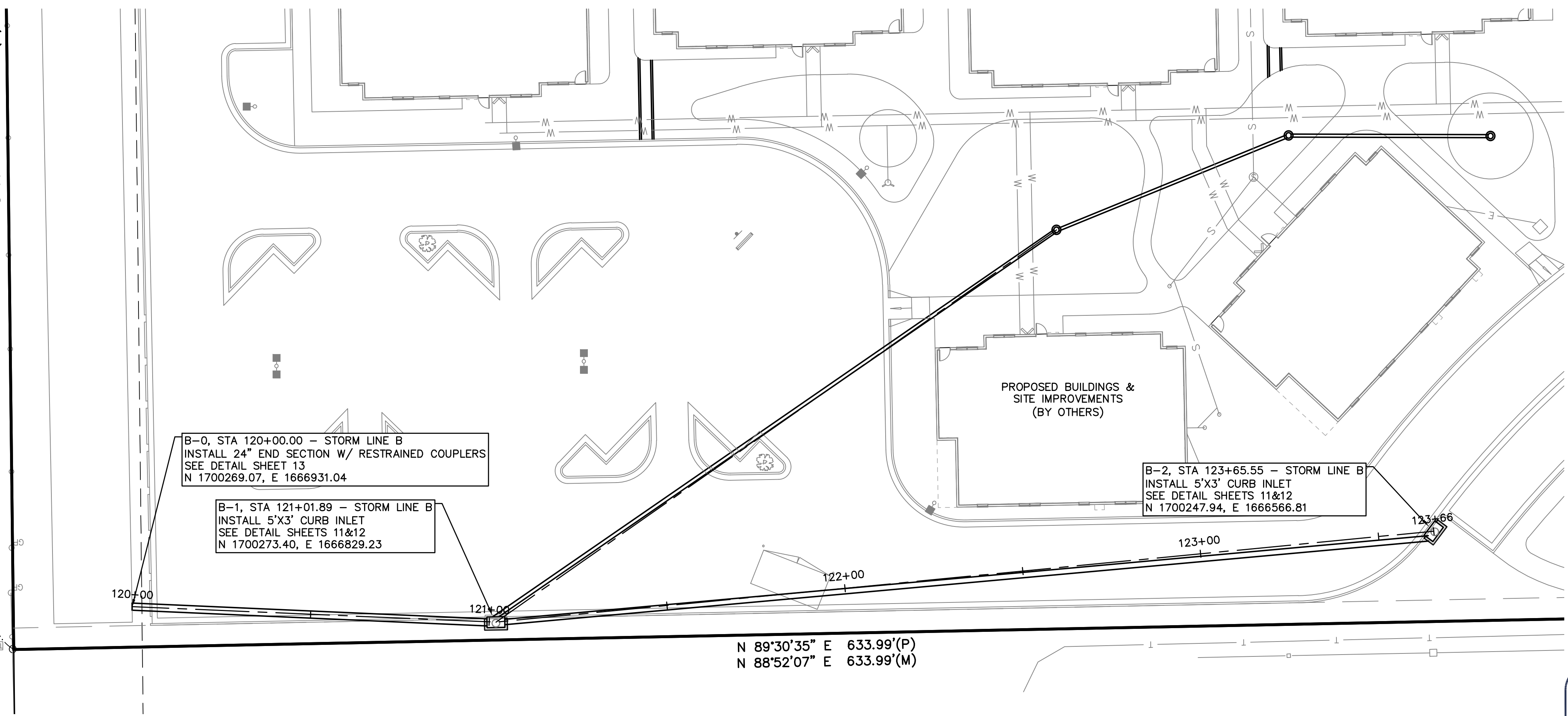
**STORM SEWER IMPROVEMENTS**  
STORM SEWER PLAN AND PROFILE

THE COORDINATES PROVIDED IN THESE PLANS ARE FOR INFORMATION AND CHECKING PURPOSES ONLY. IT IS THE CONTRACTOR'S RESPONSIBILITY TO CALCULATE CONSTRUCTION STAKING COORDINATES ACCORDING TO THE DIMENSIONS SHOWN ON THESE PLANS. CONTRACTOR SHALL VERIFY THE ACCURACY OF THE COORDINATES SHOWN IN THE TABLE HEREON BEFORE CONSTRUCTION.

THIS PLAN SHEET IS PART OF AN OVERALL KAW VALLEY ENGINEERING PLAN SET FOR THE SPECIFIC IMPROVEMENTS CONTEMPLATED THEREIN. AS SUCH, THE INFORMATION REFLECTED HEREIN SHOULD ONLY BE INTERPRETED WITHIN THE CONTEXT OF THE COMPLETE PLAN SET.

PROJ. NO.	G21_2066
DESIGNER	EAM
DRAWN BY	EAM
CFN	2066DPP
SHEET	02
REV	0

S 0°00'22" E 332.00'(P)  
S 00°38'50" E 331.88'(M)



SCALE:  
PLAN: 1"=20'  
PROFILE: 1"=20' HORIZ.  
1"=5' VERT.



SHAWN R. BRYAN  
ENGINEER  
KS # 17899

**AS BUILTS**

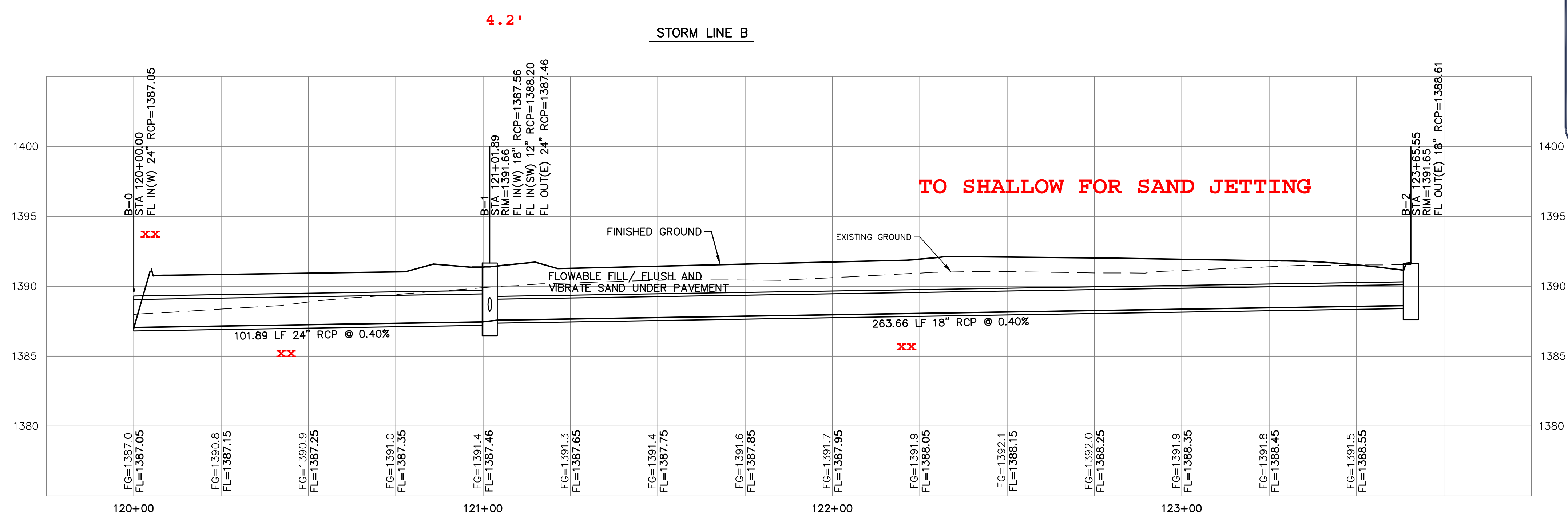
**KEMILLER ENGINEERING PA**

117 E. Lewis,  
Wichita, KS 67202 (316)264-0242

200 N. EMPORIA, SUITE 100  
WICHITA, KANSAS 67202  
PH. (316) 440-4304 | FAX (316) 440-4309  
www.kveeng.com | www.kveeng.com

**KAW VALLEY ENGINEERING**

KAW VALLEY ENGINEERING, INC. IS AUTHORIZED TO OFFER ENGINEERING SERVICES BY KANSAS STATE CERTIFICATE OF AUTHORIZATION # E-113. EXPIRES 12/31/22



THE COORDINATES PROVIDED IN THESE PLANS ARE FOR INFORMATION AND CHECKING PURPOSES ONLY. IT IS THE CONTRACTOR'S RESPONSIBILITY TO CALCULATE CONSTRUCTION STAKING COORDINATES ACCORDING TO THE DIMENSIONS SHOWN ON THESE PLANS. CONTRACTOR SHALL VERIFY THE ACCURACY OF THE COORDINATES SHOWN IN THE TABLE HEREON BEFORE CONSTRUCTION.

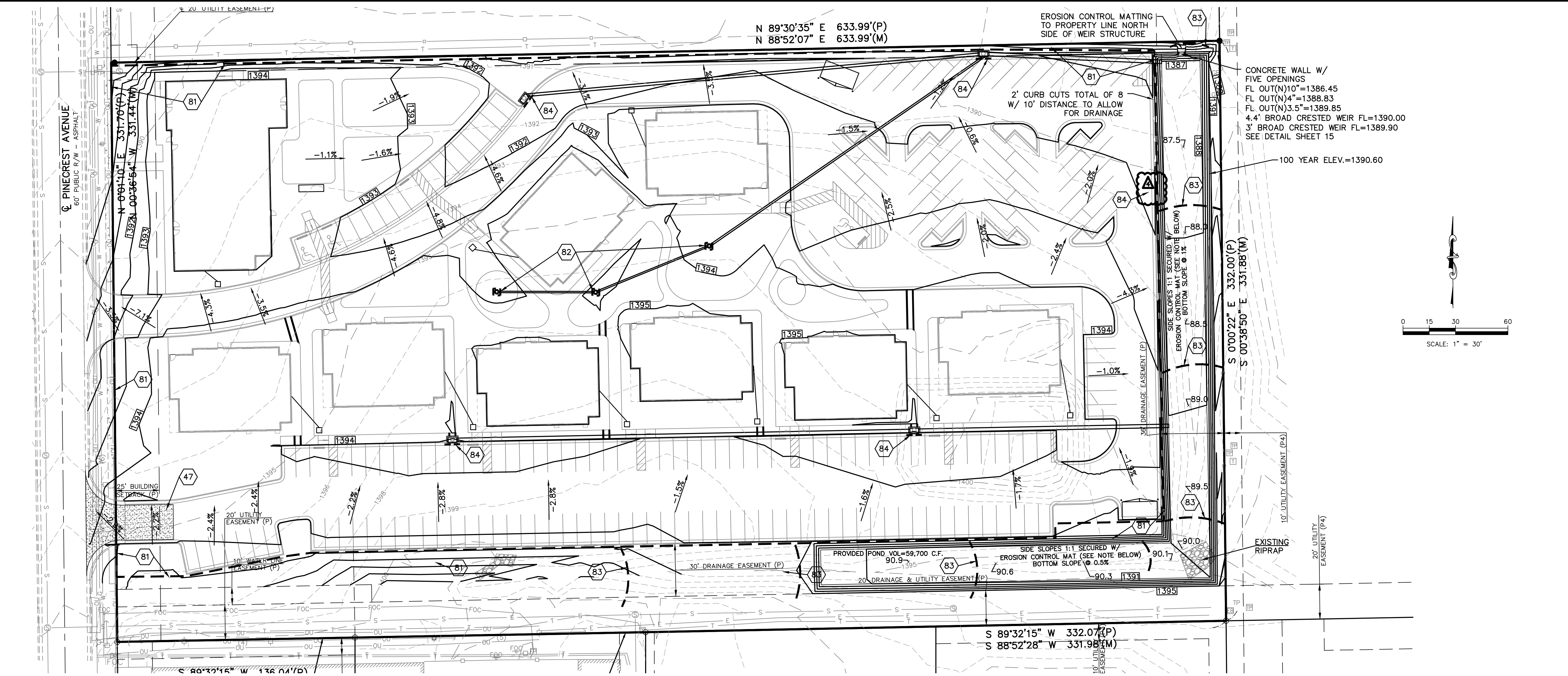
THIS PLAN SHEET IS PART OF AN OVERALL KAW VALLEY ENGINEERING PLAN SET FOR THE SPECIFIC IMPROVEMENTS CONTEMPLATED THEREIN. AS SUCH, THE INFORMATION REFLECTED HEREIN SHOULD ONLY BE INTERPRETED WITHIN THE CONTEXT OF THE COMPLETE PLAN SET.

**SPECTRA STUDENT HOUSING**  
21ST STREET & PINECREST AVENUE  
WICHITA, KANSAS

**STORM SEWER IMPROVEMENTS**  
STORM SEWER PLAN AND PROFILE

PROJ. NO.	G21_2066
DESIGNER	EAM
DRAWN BY	EAM
CFN	2066DPP
SHEET	03
REV	0





**EROSION CONTROL NOTES:**

- PROPERTY LINE IS LIMITS OF CONSTRUCTION EXCEPT AS SHOWN.
- THE CONTRACTOR SHALL INSTALL EROSION CONTROL MEASURES AS SHOWN ON THE DRAWINGS PRIOR TO BEGINNING EARTHWORK OPERATIONS.
- THE CONTRACTOR SHALL MAINTAIN ALL SILT CONTROL MEASURES DURING CONSTRUCTION.
- ALL SILT SHALL REMAIN ON SITE AND SURROUNDING STREETS SHALL BE KEPT CLEAR OF ALL MUD AND DEBRIS.
- A SEDIMENTATION BARRIER IS TO BE INSTALLED AS SHOWN.
- ACCUMULATED SEDIMENT SHALL BE REMOVED AND THE SEDIMENTATION BARRIERS MAINTAINED AS NEEDED TO PREVENT SEDIMENTATION BYPASS OF THE BARRIER.
- SLOPES ARE TO BE LEFT IN A ROUGH CONDITION DURING GRADING.
- CURB INLET SEDIMENTATION BARRIERS ARE TO BE INSTALLED AROUND INLETS AND WEIRS WHERE SEDIMENTATION IS A CONCERN. INLET BARRIERS SHALL BE EITHER BLOCK AND GRAVEL OR SILT FENCE.
- SEDIMENT IS TO BE REMOVED FROM STORM WATER DRAINAGE SYSTEMS.
- RIPRAP IS TO BE INSTALLED AT AREAS OF CONCENTRATED FLOW (I.E. CULVERT OUTLETS).
- CONTRACTOR IS RESPONSIBLE FOR INSTALLING ANY ADDITIONAL EROSION CONTROL AS HE/SHE DEEMS NECESSARY.
- THE CONTRACTOR SHALL PROVIDE ALL MATERIALS, TOOLS, EQUIPMENT AND LABOR AS NECESSARY TO INSTALL AND MAINTAIN ADEQUATE EROSION AND SILTATION CONTROLS REQUIRED TO PREVENT SOIL EROSION FROM LEAVING THE PROJECT SITE. IT SHALL BE THE CONTRACTOR'S SOLE RESPONSIBILITY TO ENSURE THAT METHODS UTILIZED ARE ADEQUATE AND COMPLY WITH REQUIREMENTS OF THE SPECIFICATIONS AND GOVERNMENTAL AGENCIES HAVING JURISDICTION OVER THE WORK.
- TEMPORARY SEDIMENT FENCE TO REMAIN UNTIL ADEQUATE VEGETATION IS ESTABLISHED.
- MUD AND DEBRIS SHALL BE CLEANED UP AT THE CONCLUSION OF EACH WORKING DAY, OR AFTER EACH RAINFALL IF SILT IS PRESENT.
- INSPECTION, MAINTENANCE AND REPAIR OF EROSION CONTROL DEVICES SHALL BE ON GOING THROUGHOUT THE LIFE OF BUILDING CONSTRUCTION TO KEEP THE DEVICES IN OPERABLE CONDITION AT ALL TIMES. ADDITIONAL MEASURES SHALL BE INSTALLED AS REQUIRED BY ACTUAL FIELD CONDITIONS AND/OR GOVERNING INSPECTION AGENCIES.
- INSTALL CONSTRUCTION ENTRANCE AT ANY POINT WHERE TRAFFIC WILL BE ENTERING OR LEAVING THE SITE AND AS SHOWN ON PLANS.
- AT COMPLETION OF SITE GRADING AND OTHER RELATED CONSTRUCTION ACTIVITIES, ALL DISTURBED AREAS WITHIN THE PROJECT SITE SHALL BE SEEDED, SODDED, OR LANDSCAPED AS SHOWN ON THE LANDSCAPE PLAN WITHIN 14 DAYS.
- TOPSOIL IS TO BE PLACED IN AREAS UNSUITABLE FOR VEGETATIVE GROWTH.
- STRIP TOPSOIL PRIOR TO EXCAVATION, STOCKPILE AND SPREAD ONTO DISKED SUBGRADE (4" MIN) A THICKNESS OF 4 INCHES.
- ROCK LINING (RIPRAP) SHALL BE DURABLE STONE CONTAINING A COMBINED TOTAL OF NOT MORE THAN 10 PERCENT OF EARTH, SAND, SHALE AND NON-DURABLE ROCK. AT LEAST 60 PERCENT OF THE MASS SHALL BE OF PIECES HAVING A MINIMUM WEIGHT OF 150 POUNDS OR MORE PER CUBIC FOOT.
- THE CONTRACTOR SHALL HAVE THE RESPONSIBILITY FOR RESOLVING COMPLAINTS IN THE EVENT THAT COMPLAINTS OR DAMAGE CLAIMS ARE FILED DUE TO DAMAGES OCCURRING ADJACENT TO OR DOWNSTREAM FROM PROPERTY BY SEDIMENT RESULTING FROM EROSION ON THE PROJECT SITE.
- GOOD HOUSEKEEPING PRACTICES SHALL BE MAINTAINED ON SITE TO KEEP SOLID WASTE FROM ENTRY INTO WATERS.

**NOTE:**  
 EROSION CONTROL MAT IN AREA OTHER THAN LABELED TO BE INSTALLED SHALL BE NORTH AMERICAN GREEN ROLLMAX C125BN; EQUIVALENT OR GREATER.

- ALL FUELING FACILITIES PRESENT ON SITE SHALL ADHERE TO APPLICABLE FEDERAL AND STATE REQUIREMENTS CONCERNING UNDERGROUND STORAGE, ABOVE GROUND STORAGE AND DISPENSERS, INCLUDING SPILL PREVENTION, CONTROL AND COUNTER MEASURES.
- EROSION CONTROL IS TO BE PLACED IN PHASING AS CONSTRUCTION PROGRESSES.
- MINIMAL WASHING OF CONCRETE EQUIPMENT ALLOWED, CHUTE ETC. CONCRETE WASHOUT OF THE DRUM IS NOT ALLOWED. ANY PIT/WASHOUT AREA NEEDS TO BE MAINTAINED IN A NON-DISCHARGING MANNER AND ANY WASTE RESIDUE WILL NEED TO BE CLEANED OUT AND REMOVED AT THE END OF PROJECT.
- CONTRACTOR/DEVELOPER IS RESPONSIBLE FOR HAVING LOT BUILDERS FOLLOW THE GUIDELINES OF "CONTROLLING EROSION WHEN BUILDING YOUR HOME" PROVIDED BY KANSAS DEPARTMENT OF HEALTH AND ENVIRONMENT.
- EROSION CONTROL SEDIMENT FENCE TO BE INSTALLED 1'-0" BEHIND CURB & GUTTER UPON COMPLETION OF BACKFILL OF CURB IN ALL AREAS WHERE SLOPES FROM LOT DRAIN TOWARDS CURB. UPON COMPLETION OF FINAL GRADING THE TOES OF ALL EMBANKMENTS IN EXCESS OF TWO FEET IN HEIGHT WILL HAVE EROSION CONTROL SEDIMENT FENCE INSTALLED.

**EROSION & PROPOSED IMPROVEMENTS LEGEND:**

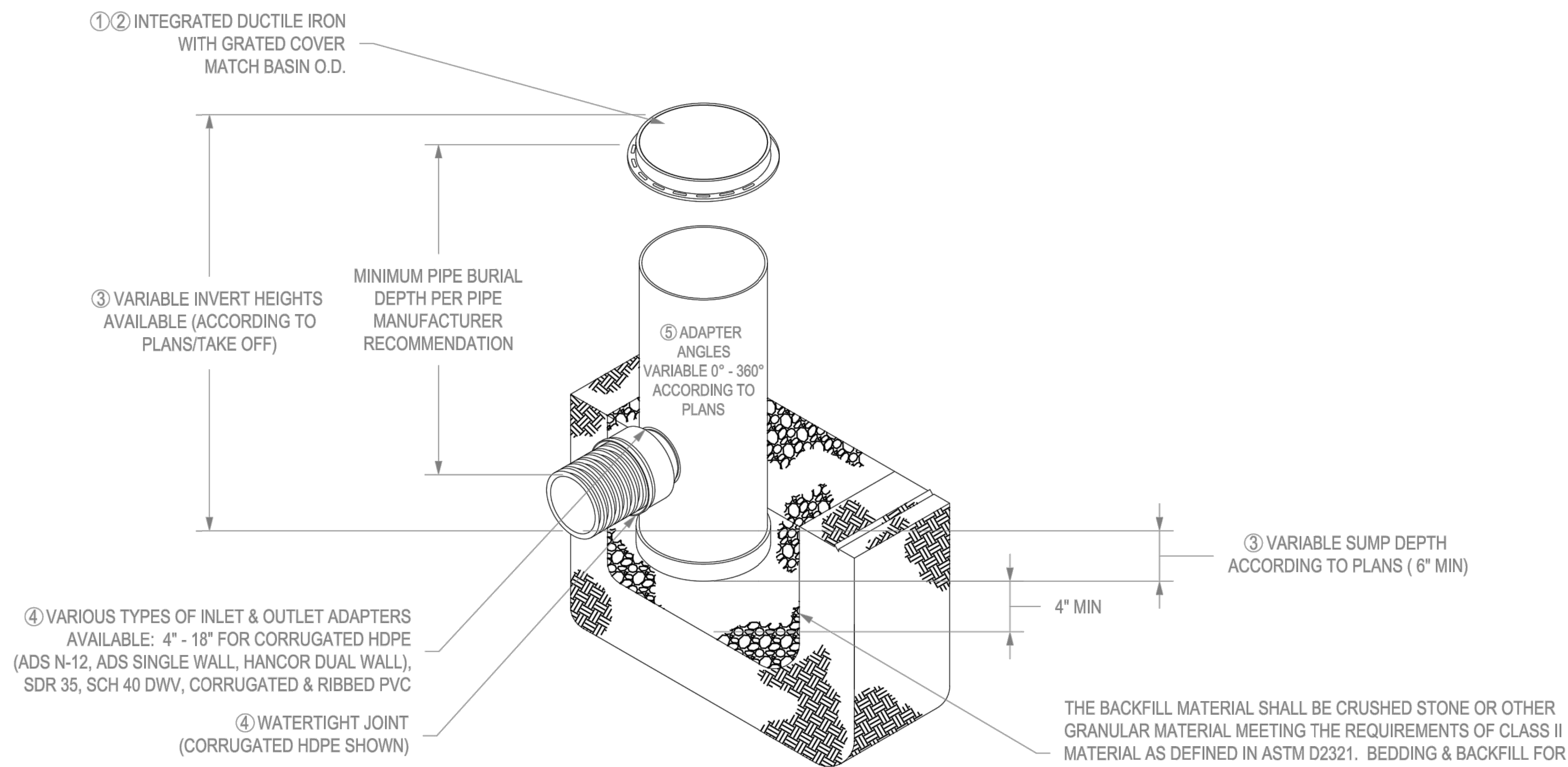
- PROPOSED FINISHED GROUND CONTOUR (1' INTERVALS)
- EXISTING GROUND CONTOUR (1' INTERVALS)
- PROPOSED FLOW ARROW
- SILT FENCE (APPROX. 1,750 LF, INSTALL PER EROSION CONTROL DETAILS)
- DITCH CHECK (8 EA., INSTALL PER EROSION CONTROL DETAILS)
- DROP INLET PROTECTION (3 EA., INSTALL PER EROSION CONTROL DETAILS)
- CURB INLET PROTECTION (5 EA., INSTALL PER EROSION CONTROL DETAILS)

- NOTES:**
- 47 CONSTRUCTION ENTRANCE (PER CITY OF WICHITA STANDARDS)
  - 81 SEDIMENTATION FENCE (PER CITY OF WICHITA STANDARDS)
  - 82 DROP INLET FILTER PROTECTION (PER CITY OF WICHITA STANDARDS)
  - 83 DITCH CHECK (PER CITY OF WICHITA STANDARDS)
  - 84 CURB INLET PROTECTION (PER CITY OF WICHITA STANDARDS)

THIS PLAN SHEET IS PART OF AN OVERALL KAW VALLEY ENGINEERING PLAN SET FOR THE SPECIFIC IMPROVEMENTS CONTEMPLATED THEREIN. AS SUCH, THE INFORMATION CONTAINED MAY BE LIMITED AND SHOULD ONLY BE INTERPRETED WITHIN THE CONTEXT OF THE COMPLETE PLAN SET.

	SRB	EAM	DSN	CHK
	EAM	EAM	DSN	DWN
0	1/11/23	INITIAL RELEASE	REV DATE	DESCRIPTION
SHAWN R. BRYAN ENGINEER KS # 17899				
200 N. EMPORIA, SUITE 100 WICHITA, KANSAS 67202 PH. (316) 440-4304   FAX (316) 440-4309 www.kveeng.com   www.kveeng.com				
<b>KAW VALLEY ENGINEERING</b> KAW VALLEY ENGINEERING, INC. IS AUTHORIZED TO OFFER ENGINEERING SERVICES BY KANSAS STATE CERTIFICATE OF AUTHORIZATION # E-113. EXPIRES 12/31/22				
<b>SPECTRA STUDENT HOUSING</b>	<b>21ST STREET &amp; PINECREST AVENUE</b>			<b>WICHITA, KANSAS</b>
<b>STORM SEWER IMPROVEMENTS</b>				
<b>EROSION CONTROL PLAN</b>				
PROJ. NO. <b>G21_2066</b>				
DESIGNER <b>EAM</b>		DRAWN BY <b>EAM</b>		
CFN <b>2066DECP</b>				
SHEET <b>05</b>				REV <b>0</b>

# NYLOPLAST 18" DRAIN BASIN: 2818AG \_\_ X



④ VARIOUS TYPES OF INLET & OUTLET ADAPTERS AVAILABLE: 4" - 18" FOR CORRUGATED HDPE (ADS N-12, ADS SINGLE WALL, HANCOR DUAL WALL), SDR 35, SCH 40 DWV, CORRUGATED & RIBBED PVC

④ WATERTIGHT JOINT (CORRUGATED HDPE SHOWN)



- ① - GRATES/SOLID COVER SHALL BE DUCTILE IRON PER ASTM A536 GRADE 70-50-05
- ② - FRAMES SHALL BE DUCTILE IRON PER ASTM A536 GRADE 70-50-05
- ③ - DRAIN BASIN TO BE CUSTOM MANUFACTURED ACCORDING TO PLAN DETAILS. RISERS ARE NEEDED FOR BASINS OVER 84" DUE TO SHIPPING RESTRICTIONS. SEE DRAWING NO. 7001-110-065
- ④ - DRAINAGE CONNECTION STUB JOINT TIGHTNESS SHALL CONFORM TO ASTM D3212 FOR CORRUGATED HDPE (ADS & HANCOR DUAL WALL) & SDR 35 PVC
- ⑤ - ADAPTERS CAN BE MOUNTED ON ANY ANGLE 0° TO 360°. TO DETERMINE MINIMUM ANGLE BETWEEN ADAPTERS SEE DRAWING NO. 7001-110-013.

THE BACKFILL MATERIAL SHALL BE CRUSHED STONE OR OTHER GRANULAR MATERIAL MEETING THE REQUIREMENTS OF CLASS II MATERIAL AS DEFINED IN ASTM D2321. BEDDING & BACKFILL FOR SURFACE DRAINAGE INLETS SHALL BE PLACED & COMPACTED UNIFORMLY IN ACCORDANCE WITH ASTM D2321.

GRATE OPTIONS	LOAD RATING	PART #	DRAWING #
PEDESTRIAN	MEETS H-10	1899CGP	7001-110-212
STANDARD	MEETS H-20	1899CGS	7001-110-213
SOLID COVER	MEETS H-20	1899CGC	7001-110-214
DOME	N/A	1899CGD	7001-110-215
DROP IN GRATE	LIGHT DUTY	1801DI	7001-110-074

THIS PRINT DISCLOSES SUBJECT MATTER IN WHICH NYLOPLAST HAS PROPRIETARY RIGHTS. THE RECEIPT OR POSSESSION OF THIS PRINT DOES NOT CONFER, TRANSFER, OR LICENSE THE USE OF THE DESIGN OR TECHNICAL INFORMATION SHOWN HEREIN. REPRODUCTION OF THIS PRINT OR ANY INFORMATION CONTAINED HEREIN, OR MANUFACTURE OF ANY ARTICLE HEREFROM, FOR THE DISCLOSURE TO OTHERS IS FORBIDDEN, EXCEPT BY SPECIFIC WRITTEN PERMISSION FROM NYLOPLAST.

DRAWN BY	EBC	MATERIAL
DATE	4-3-06	
APPD BY	CJA	PROJECT NO./NAME
DATE	4-3-06	
DWG SIZE	A	SCALE 1:30 SHEET 1 OF 1

3130 VERONA AVE  
 BUFORD, GA 30518  
 PHN (770) 932-2443  
 FAX (770) 932-2490  
 www.nyloplast-us.com

**Nyloplast**

TITLE  
**18 IN DRAIN BASIN QUICK SPEC INSTALLATION DETAIL**

DWG NO. 7001-110-191 REV B

	<p>SHAWN R. BRYAN          ENGINEER          KS # 17899</p>
<p>200 N. EMPORIA, SUITE 100          WICHITA, KANSAS 67202          PH. (316) 440-4304   FAX (316) 440-4309          info@kveeng.com   www.kveeng.com</p>	<p><b>KAW VALLEY ENGINEERING</b>          KAW VALLEY ENGINEERING, INC., IS AUTHORIZED TO OFFER ENGINEERING SERVICES BY KANSAS STATE CERTIFICATE OF AUTHORIZATION # E-113. EXPIRES 12/31/22</p>
<p><b>SPECTRA STUDENT HOUSING</b>          21ST STREET &amp; PINECREST AVENUE          WICHITA, KANSAS</p>	<p><b>STORM SEWER IMPROVEMENTS</b>          NYLOPLAST DETAIL</p>
<p>PROJ. NO. G21_2066</p>	<p>DESIGNER EAM DRAWN BY EAM</p>
<p>CFN 2066DDET</p>	<p>SHEET 14 REV 0</p>

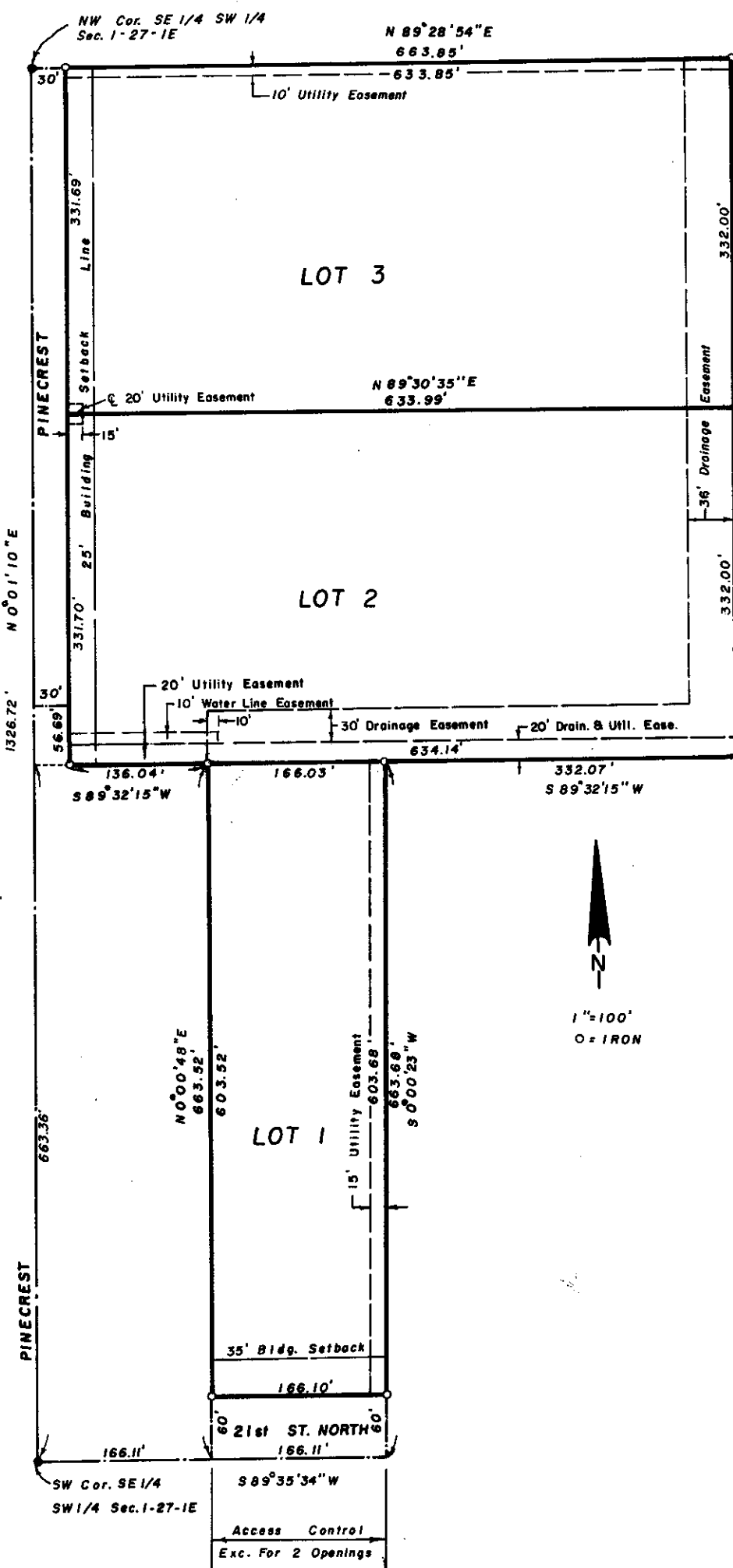


1E-1 E-6

1E-1 E-5

# WICHITA LAND ADDITION

WICHITA, SEDGWICK COUNTY, KANSAS



State of Kansas, County of Sedgwick, SS.

The foregoing instrument was acknowledged before me this 1st day of December, 1983, by J. D. Newman, Vice President, of Fourth National Bank and Trust Company, Wichita, Kansas, a Kansas Corporation, on behalf of the corporation.

My Commission expires: 9/12/84

Nancy Helton, Notary Public  
 My Commission expires: 9/12/84

This plat of "Wichita Land Addition", Wichita, Sedgwick County, Kansas has been submitted to and approved by the Wichita-Sedgwick County Metropolitan Area Planning Commission, Wichita, Kansas.

Dated this 25th day of AUGUST, 1983.

Wichita-Sedgwick County Metropolitan Area Planning Commission  
David DeVouch, Chairman  
Robert A. Lakin, Secretary

This plat approved and all dedications shown hereon, if any, accepted by the Board of City Commissioners of the City of Wichita, Kansas, this 12th day of December, 1983.

Margaret Wright, Mayor  
Donald E. Glisick, City Clerk

This plat approved and all dedications shown hereon, if any accepted by the Board of County Commissioners of Sedgwick County, Kansas, this 12 day of Jan, 1984.

Jack Spratt, Chairman  
Donald E. Glisick, Commissioner  
Tom Scott, Commissioner

ATTEST:  
Dorothy K. White, County Clerk

Recorded on transfer record this 12 day of Jan, 1984.

Dorothy K. White, County Clerk

State of Kansas, County of Sedgwick, SS.

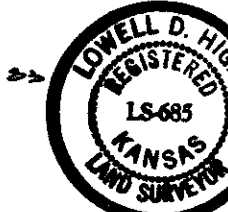
This is to certify that this instrument was filed for record in the Register of Deeds Office, at 1102 a/clock, A.M., on the 12th day of JANUARY, 1984.

Bette F. McCart, Register of Deeds  
Pat Kettler, Deputy

State of Kansas, County of Sedgwick, SS.

I, Lowell D. High, Land Surveyor in the State of Kansas do hereby certify that I have surveyed and platted "Wichita Land Addition", Wichita, Sedgwick County, Kansas and that the accompanying plat is a true and correct exhibit of said survey described as follows: The South Half of the Northwest Quarter of the Southeast Quarter of the Southwest Quarter of Section 1, Township 27 South, Range 1 East of the 6th P.M., except the West 30 feet of the South 56.69 feet thereof, Sedgwick County, Kansas; and the East Half of the West Half of the South Half of the West Half of the Southeast Quarter of the Southwest Quarter of Section 1, Township 27 South, Range 1 East of the 6th P.M., Sedgwick County, Kansas; and the North Half of the Northwest Quarter of the Southeast Quarter of the Southwest Quarter of Section 1, Township 27 South, Range 1 East of the 6th P.M., Sedgwick County, Kansas.

Lowell D. High  
 Lowell D. High, L.S. 10-21-83



Know all men by these presents that Wichita Land Associates, Inc., a Kansas Corporation, by Aleksandar Hadjeki, President, has caused the land described in the Land Surveyor's Certificate to be platted into Lots and Streets to be known as "Wichita Land Addition", Wichita, Sedgwick County, Kansas.

The streets are hereby dedicated to and for the use of the public. Utility easements as indicated on the plat are hereby granted for the construction and maintenance of all public utilities. The drainage easement as indicated on the plat is hereby granted for drainage purposes. The drainage and utility easement as indicated on the plat is hereby granted for drainage purposes and construction and maintenance of all public utilities. The water line easement as indicated on the plat is hereby granted for the construction and maintenance of a public water line.

All abutter's rights of access to or from 21st Street North, over and across the south line of Lot 1, are hereby granted to the City of Wichita, provided, however, that Lot 1 shall have access to 21st Street North at two locations to be designated by the City Engineer of Wichita, Kansas.

Wichita Land Associates, Inc., a Kansas Corporation.  
Aleksandar Hadjeki, President

ATTEST:  
Patricia M. Stevenson, Secretary

State of Kansas, County of Sedgwick, SS.

Be it remembered that on this 1st day of November, 1983, before me a notary public in aforesaid county and state name Aleksandar Hadjeki, President and to me known to be the same persons who executed the foregoing instrument of writing and duly acknowledged the execution of the same for and on behalf and as the act and deed of said corporation. In testimony thereof I have hereunto set my hand and affixed my notarial seal the day and year above written.

William S. Bishop, Notary Public  
 My commission expires: February 8, 1984



The Fourth National Bank and Trust Company, Wichita, Kansas, by J. D. Newman, Vice President, mortgages to the land described in the 1983 Surveyor's Certificate, does hereby consent to the plating of "Wichita Land Addition", Wichita, Sedgwick County, Kansas.

Fourth National Bank and Trust Company, Wichita, Kansas

ATTEST:  
J. D. Newman

The Union National Bank of Wichita, Kansas, by Steph Schels, Vice President, mortgages to the land described in the Land Surveyor's Certificate does hereby consent to the plating of "Wichita Land Addition", Wichita, Sedgwick County, Kansas.

ATTEST:  
Steph Schels, Vice President

State of Kansas, County of Sedgwick, SS.  
 The foregoing instrument was acknowledged before me this 1st day of December, 1983, by Steph Schels, Vice President, of Union National Bank of Wichita, Kansas, a Kansas Corporation, on behalf of the corporation.

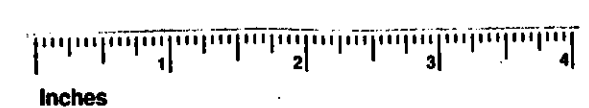
Carol M. King, Notary Public  
 My Commission expires: 12-22-83

#670758

2000

S-3 1-31

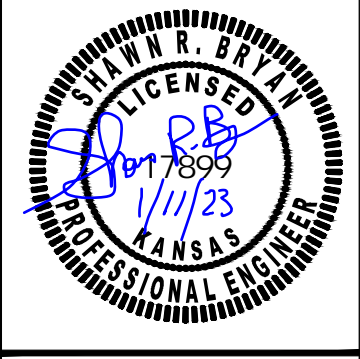
S-3 1-31



This digital plat record accurately reproduces in all details the original plat filed with the Sedgwick County Register of Deeds. Digitized under the supervision of Register of Deeds Bill Meek by Sedgwick County Geographic Information Systems.

Bill Meek, Register of Deeds  
 Digitized rendition of original signature

SRB	CHK
EAM	DWN
EAM	DSN
INITIAL RELEASE	DESCRIPTION
1/11/23	REV DATE
0	REV



SHAWN R. BRYAN  
 ENGINEER  
 KS # 17899

200 N. EMPORIA, SUITE 100  
 WICHITA, KANSAS 67202  
 PH. (316) 440-4304 | FAX (316) 440-4309  
 www.kawvalley.com | www.kawvalley.com

**KAW VALLEY ENGINEERING**

KAW VALLEY ENGINEERING, INC. IS AUTHORIZED TO OFFER ENGINEERING SERVICES BY KANSAS STATE CERTIFICATE OF AUTHORIZATION # E-113. EXPIRES 12/31/22

**SPECTRA STUDENT HOUSING**  
 21ST STREET & PINECREST AVENUE  
 WICHITA, KANSAS

**STORM SEWER IMPROVEMENTS**  
 PLAT

PROJ. NO.	G21_2066
DESIGNER	EAM
DRAWN BY	EAM
CFN	2066DDET
SHEET	16
REV	0