

J:\PROJECTS\2022\201010684_CROSSLAND_WSU_P81100_220684_CAD\SHS\05_CIVIL\SW\PPD\22684-06-4000.DWG
 PLOTTED: Wednesday, January 18, 2023 @ 09:48AM

GENERAL NOTES

- THE CONTRACTOR SHALL COMPLY WITH ALL APPLICABLE SAFETY REGULATIONS. ALL CONSTRUCTION SHALL BE COMPLETED FOLLOWING CURRENT CITY STANDARD SPECIFICATIONS AND SPECIAL PROVISIONS.
- CONTRACTOR WILL BE REQUIRED TO PROVIDE NOTICE TO UTILITY COMPANIES A MINIMUM OF SEVENTY-TWO (72) HOURS PRIOR TO ANY EXCAVATION, AS FOLLOWS:
 KANSAS ONE-CALL 687-2470
 THE CONTRACTOR MUST NOTIFY THE FOLLOWING IN CASE OF AN EMERGENCY:
 AT&T 1-800-246-5464
 BLACK HILLS ENERGY (GAS) 1-800-694-8989
 CITY OF WICHITA WATER & SEWER 1-316-219-8921
 CITY OF WICHITA STORMWATER 1-316-268-4090
 CITY OF WICHITA TRAFFIC 1-316-268-4034
 COX COMMUNICATIONS 1-888-249-3530
 KANSAS GAS SERVICE 1-888-482-4950
 EVERGY 1-800-544-4857
 WSU FIBER 1-316-978-5069
 WSU FACILITIES SERVICES 1-316-978-3444
- UTILITY SERVICE LINES, POLES, ETC. ARE TO BE ADJUSTED AS NECESSARY BY OTHERS PRIOR TO CONSTRUCTION UNLESS THE PLANS SPECIFICALLY CALL FOR THEIR ADJUSTMENT BY THE CONTRACTOR OR UNLESS THE PLANS SPECIFICALLY IDENTIFY A UTILITY TO BE ADJUSTED BY ITS OWNER DURING CONSTRUCTION. EXISTING UTILITIES AND THEIR LOCATION, AS SHOWN ON THE PLANS, REPRESENT THE BEST INFORMATION OBTAINABLE FOR DESIGN. THE CONTRACTOR WILL BE REQUIRED TO WORK AROUND EXISTING UTILITIES WITHIN THE RIGHT-OF-WAY WHICH DO NOT CONFLICT WITH PROPOSED CONSTRUCTION.
- RUBBLE FROM THE REMOVAL OF MISCELLANEOUS STRUCTURES AND EXCESS EXCAVATION WHICH IS TO BE WASTED SHALL BE DISPOSED OF ON SITES TO BE PROVIDED BY THE CONTRACTOR. THESE SITES SHALL BE APPROVED BY THE ENGINEER AS TO SUITABILITY, APPEARANCE AND SITE LOCATION. LOCATIONS, IN THE OPINION OF THE ENGINEER, THAT WILL LEAVE AN UNSIGHTLY APPEARANCE WILL NOT BE APPROVED. ALL DISPOSAL SITES MUST BE APPROVED BY THE KANSAS DEPARTMENT OF HEALTH AND ENVIRONMENT. MATERIAL EITHER STOCKPILED OR IN A FLOOD PLAIN WILL REQUIRE A KANSAS STATE BOARD OF AGRICULTURE PERMIT. ANY MATERIAL DUMPED IN WATERS OF THE UNITED STATES OR WETLANDS IS SUBJECT TO U.S. CORPS OF ENGINEERS PERMITTING REGULATIONS. ANY MATERIAL BURIED OR STOCKPILED BEYOND APPROVED CONSTRUCTION LIMITS WILL REQUIRE ADDITIONAL ARCHAEOLOGICAL INVESTIGATIONS UNLESS BURIED IN A PREVIOUSLY APPROVED BORROW LOCATION.
- TREES AND SHRUBS IN PUBLIC RIGHT-OF-WAY WHICH ARE IN DIRECT CONFLICT WITH PROPOSED NEW CONSTRUCTION SHALL BE REMOVED BY THE CONTRACTOR WITH THE CITY ENGINEER'S APPROVAL. TREES AND SHRUBS WHICH ARE NOT IN DIRECT CONFLICT WITH PROPOSED NEW CONSTRUCTION SHALL BE SAVED AND PROTECTED FROM DAMAGE.
- THE CONTRACTOR SHALL GIVE ALL PROPERTY OWNERS AND/OR TENANTS OF DEVELOPED PROPERTY ABUTTING THE CONSTRUCTION OF THIS PROJECT A MINIMUM OF TEN (10) DAYS NOTICE PRIOR TO START OF CONSTRUCTION.
- THE CONTRACTOR SHALL BE RESPONSIBLE FOR PRESERVING PROPERTY IRONS. THE CONTRACTOR WILL BE REQUIRED TO RE-ESTABLISH ANY PROPERTY IRONS WHICH ARE DAMAGED OR DESTROYED BY HIS CONSTRUCTION OPERATIONS. SUCH IRONS SHALL BE RE-ESTABLISHED BY A LICENSED LAND SURVEYOR IN ACCORDANCE WITH STATE LAWS.
- THE ENGINEERING DIVISION SHALL FIELD LOCATE WATER VALVES ONE TIME DURING CONSTRUCTION WHEN REQUESTED BY THE CONTRACTOR. IT SHALL BE THE CONTRACTOR'S RESPONSIBILITY TO PRESERVE SUCH FIELD LOCATIONS DURING THE CONSTRUCTION PROCESS. WATER VALVES, VALVE BOXES OR FIRE HYDRANTS DAMAGED DURING CONSTRUCTION SHALL BE REPAIRED BY CONTRACTOR AT HIS OWN EXPENSE. VALVE BOXES AND WATER METERS WITHIN THE PROJECT LIMITS SHALL BE ADJUSTED TO MATCH FIELD GRADES BY THE CONTRACTOR.
- THE CONTRACTOR SHALL NOTIFY THE CONSULTANT ENGINEER AND DAWNITA REINHARDT AT 650-0740 WITH THE CITY OF WICHITA WITH THE ANTICIPATED CONSTRUCTION START DATE AND NOTIFY THEM OF PROJECT COMPLETION. STAKING AND INSPECTION FOR THIS PROJECT WILL BE THE RESPONSIBILITY OF THE CONTRACTOR.
- IF TRAFFIC WILL BE IMPACTED BY CONSTRUCTION, A TRAFFIC CONTROL PLAN MUST BE SUBMITTED AND APPROVED BY THE CITY TRAFFIC ENGINEER AT traffic@wichita.gov BEFORE CONSTRUCTION CAN BEGIN. THE CONTRACTOR SHALL BE RESPONSIBLE FOR ALL TRAFFIC CONTROL MEASURES TO FACILITATE CONSTRUCTION. ALL CONSTRUCTION ZONE MARKINGS AND SIGNAGE SHALL CONFORM TO THE LATEST VERSION OF THE MANUAL ON UNIFORM TRAFFIC CONTROL DEVICES (MUTCD) AS PUBLISHED BY THE US DEPT. OF TRANSPORTATION, FEDERAL HIGHWAY ADMINISTRATION. ALL COSTS ASSOCIATED WITH CONSTRUCTION MARKINGS AND SIGNAGE SHALL BE THE CONTRACTOR'S RESPONSIBILITY.
- ALL ELEVATIONS SHOWN ARE NAVD 88.
- ALL AREAS DISTURBED DURING CONSTRUCTION THAT WILL NOT BE UNDER PROPOSED PAVEMENT SHALL BE RESTORED TO MATCH EXISTING CONDITIONS.
- ANY SIDEWALK, DRIVE APPROACH, OR STREET PAVEMENT REMOVED TO CONSTRUCT PROJECT MUST HAVE A PAVEMENT CUT PERMIT AND BE REPLACED BY CITY CONTRACTOR. PERMITS CAN BE OBTAINED BY CALLING 316-268-4501 OR 316-268-4480.
- CITY MAINTENANCE OF STORM SEWER ENDS AT THE LAST STRUCTURE IN THE EASEMENT OR RIGHT-OF-WAY.
- FOLLOW THE LINK BELOW FOR CONSTRUCTION DETAILS ON SPECIFIC CITY OF WICHITA STANDARD DETAILS: <http://www.wichita.gov/PWU/Pages/Regulations.aspx>
- CONTRACTOR SHALL LIMIT THE EXTENT OF TRENCH OPEN OVERNIGHT AND WEEKENDS TO LESS THAN 50 FEET.
- EXISTING UTILITIES AND THEIR LOCATION, AS SHOWN ON THE PLANS REPRESENT THE BEST INFORMATION OBTAINABLE FOR DESIGN. LOCATION INFORMATION HAS BEEN OBTAINED FROM THE VARIOUS COMPANIES AND IS EITHER FROM COMPANY UTILITY DRAWINGS OR COMPANY PROVIDED FIELD LOCATIONS. THE PLAN LOCATIONS SHOWN ARE NOT GUARANTEED. ADDITIONAL EXISTING UTILITIES MAY ALSO BE ENCOUNTERED.
- A PORTION OF EXCESS EXCAVATED MATERIAL SHALL BE MOUNDING AROUND MANHOLES WHICH EXTEND MORE THAN ONE (1) FOOT ABOVE THE EXISTING GROUND. SUCH MOUND SHALL BE CONSTRUCTED WITH NEW DEVELOPMENT A SIX (6) FOOT DIAMETER FLAT TOP WITH 4 TO 1 SIDE SLOPES DOWN TO THE ORIGINAL GROUND. THE ELEVATION OF THE FLAT TOP OF THE MOUND SHALL BE 0.4 FOOT BELOW THE TOP OF THE MANHOLE.
- GEOTECHNICAL REPORT AVAILABLE UPON REQUEST.
- CONTRACTOR SHALL PROVIDE POSITIVE DRAINAGE AWAY FROM ALL MANHOLE COVERS.
- THE INSPECTING FIRM SHALL SUBMIT TO THE CITY STORMWATER MAINTENANCE DIVISION A DIGITAL COPY OF THE CCTV INSPECTION OF THE CONDUITS AND STRUCTURES FOLLOWING CONSTRUCTION. THE DIGITAL FILE FORMATION SHALL BE COMPATIBLE WITH THE CITY INPUT TEMPLATE. A COPY OF THE TEMPLATE IS AVAILABLE UPON REQUEST AT 316-268-4090.
- WORK DONE UNDER THIS PROJECT IS SUBJECT TO THE CITY OF WICHITA REQUIREMENTS FOR "CONSTRUCTION OF INFRASTRUCTURE IMPROVEMENTS BY PRIVATE CONTRACT". THE CONTRACTOR SHALL BE FAMILIAR AND COMPLY WITH ALL OF THE REQUIREMENTS, INCLUDING BONDING, INSPECTION, TESTING, NOTIFICATION, PROVIDING AS-BUILT DRAWINGS, PAYING FOR ALL NECESSARY CONNECTIONS, AND/OR STREET REPAIR FEES AND PROVIDING PIPE MATERIAL AND OTHER CERTIFICATIONS.
- DEVELOPER FOR THIS PROJECT IS:
 MWCB, LLC
 3017 N. CYPRESS DR.
 WICHITA, KS 67226
 STEVE BARRETT
 (316) 641-3268

PRIVATE STORM WATER SEWER

TO SERVE

WSU PARTNERSHIP BUILDING 11

AS BUILTS

Contractor: **Apex**
 Project Inspector: **Larry Gann**

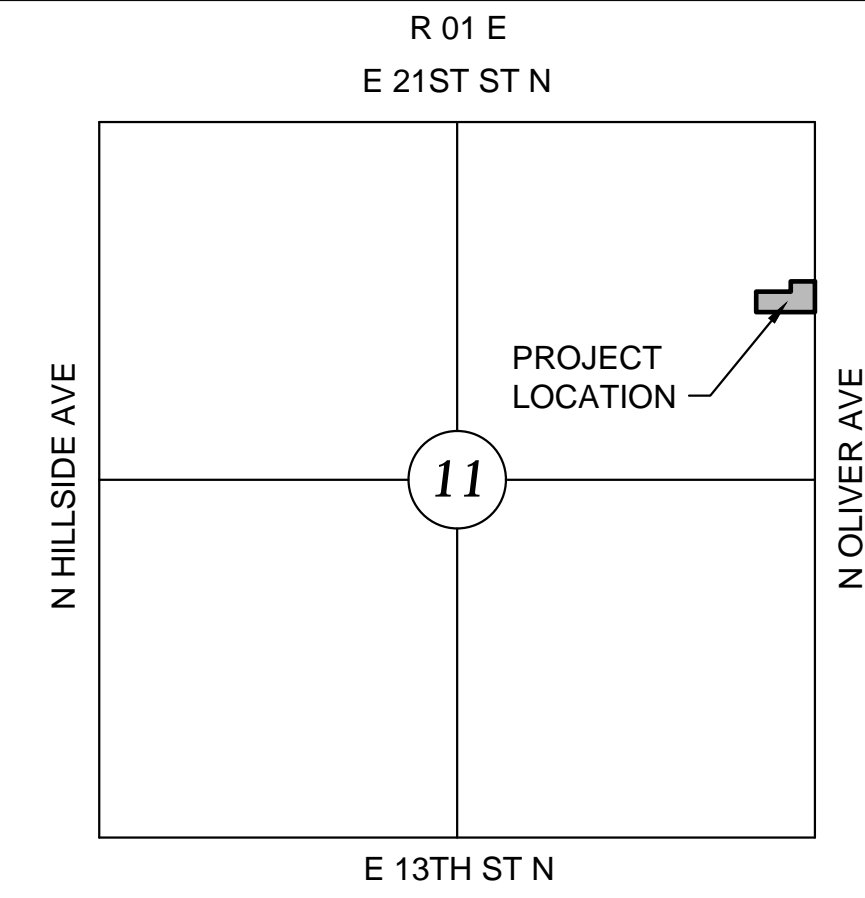
12/12/2023

KEMILLER ENGINEERING PA
 117 E. Lewis, Wichita, KS 67202 (316)264-0242

PROJECT NO. 2022-000789-PPD

THE CITY OF WICHITA, KANSAS
 GARY JANZEN, P.E. - CITY ENGINEER

ORG CODE 56030970



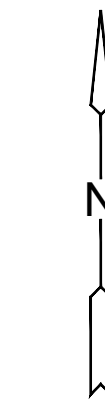
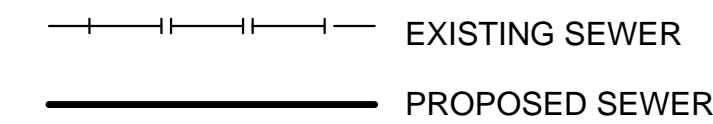
VICINITY MAP
 No Scale

INDEX TO DRAWINGS

SHEET NO.	DESCRIPTION
01	TITLE SHEET
02	TYPE 1A CURB INLET DETAIL
03	PRECAST CONCRETE MH DETAIL
04	MH FRAME & COVER DETAIL
05	SINGLE DOUBLE DROP INLET DETAIL
06	DOUBLE DOUBLE DROP INLET DETAIL
07	CURB INLET MODIFICATION DETAIL
08	REINFORCED CONC. MH DETAIL
09	SWS LINE 1 & LINE 1A
10	SWS LINE 2 & MODIFIED CURB INLETS
C400	GRADING PLAN
C500	EROSION CONTROL PLAN

SEE GENERAL NOTE #15 FOR CITY OF WICHITA STANDARD BMP LINK

LEGEND



SURVEY

The Horizontal Datum is based on the Kansas Coordinate System of 1983, NAD83(2011), EPOCH:2010.0000, South Zone. Coordinates shown have been modified to the ground using a combined adjustment factor of 1.0001200144. State Plane coordinates can be calculated by multiplying the shown values by 0.99988.

All elevations shown are based on the NAVD 88 vertical datum.

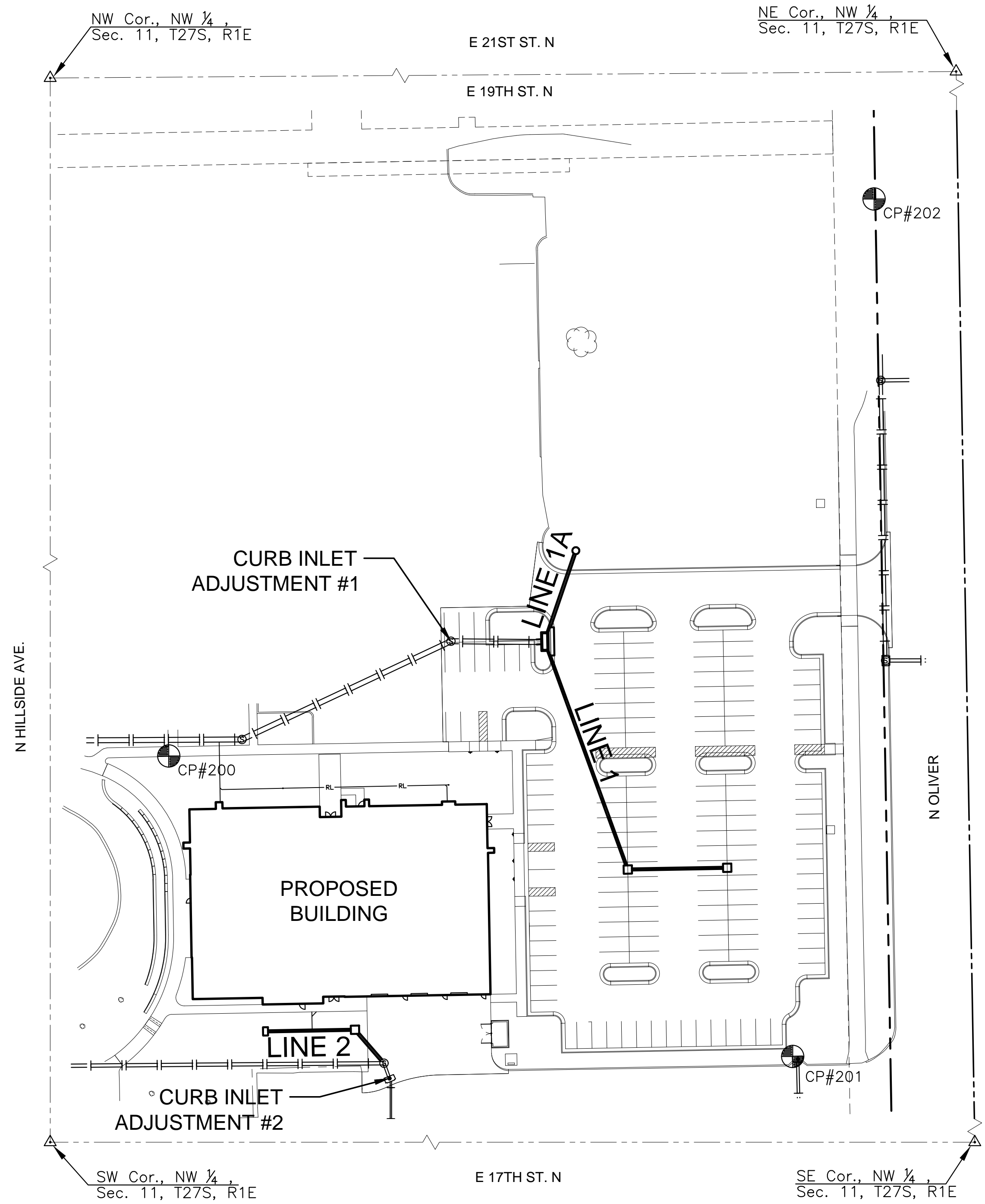
CP#171
 N: 1698665.192 E: 1664797.451 EL: 1406.90
 +Cut NW corner curb inlet

CP#200
 N: 1698209.896 E: 1664722.469 EL: 1408.68
 +Cut in side walk

CP#201
 N: 1698028.572 E: 1665099.053 EL: 1411.01
 +Cut NW corner curb inlet

CP#202
 N: 1698546.015 E: 1665148.183 EL: 1409.51
 +Cut NW corner curb inlet

All Control Points shown have elevations established using standard surveying procedures and can be used as temporary benchmarks. When using a Control point as a temporary benchmark, it is recommended that cross-checks be made to other control points or benchmarks to confirm elevations prior to use.



Stormwater Certification:
 New Development or Redevelopment (Circle One)
 Stormwater Permit # SW2015-0019
 NOI Permit # KS #: S-AR94-1801; Fed. #: KSR121025

These construction plans were prepared in accordance with the current Stormwater management Regulations as set forth in the City of Wichita's Stormwater Management Ordinance 16.32 and the policies/guidelines presented in the Wichita/Sedgwick County Stormwater Manual.

Site Area (Acres) = 2.58 acres
 Disturbed Area (Acres) = 2.58 acres
 Water Quality Treatment: Overall development wet pond
 Downstream Channel Protection: Overall development wet pond
 Detention: Provided for in overall development wet pond

The BMP used for this development is Overall development wet pond

APPROVED AS NOTED
 BY WICHITA PUBLIC WORKS ENGINEERING
 AND STORMWATER DIVISION

Engineering approved by Shawn Mellies on this day the 18th day of January, 2023
 Storm Water approved by Joe Hickie on this day the 18th day of January, 2023

NOTE TO CONTRACTORS

Inspection and testing for this project is to be provided by a Licensed Consulting Engineering Firm under contract with the Owner/Developer. Said inspection to be in accordance with the City of Wichita standard construction engineering practices and certified by a Licensed Professional Engineer in the state of Kansas. No work shall be performed by the Contractor without such inspection, nor shall any work be commenced without written authorization by the City Engineer. All Construction and Materials shall comply with the current City of Wichita Specifications and Standards and Special Provisions. (on file and available at Wichita.gov).

An approved copy of these plans signed by City staff are required on-site.



PRIVATE STORM WATER DRAINAGE PLANS FOR
WSU PARTNERSHIP BUILDING 11
 WICHITA, KS

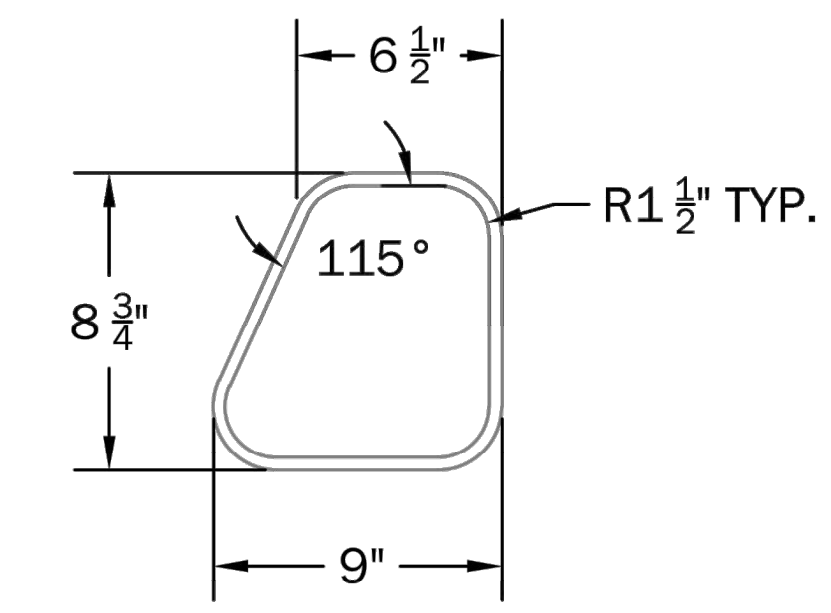
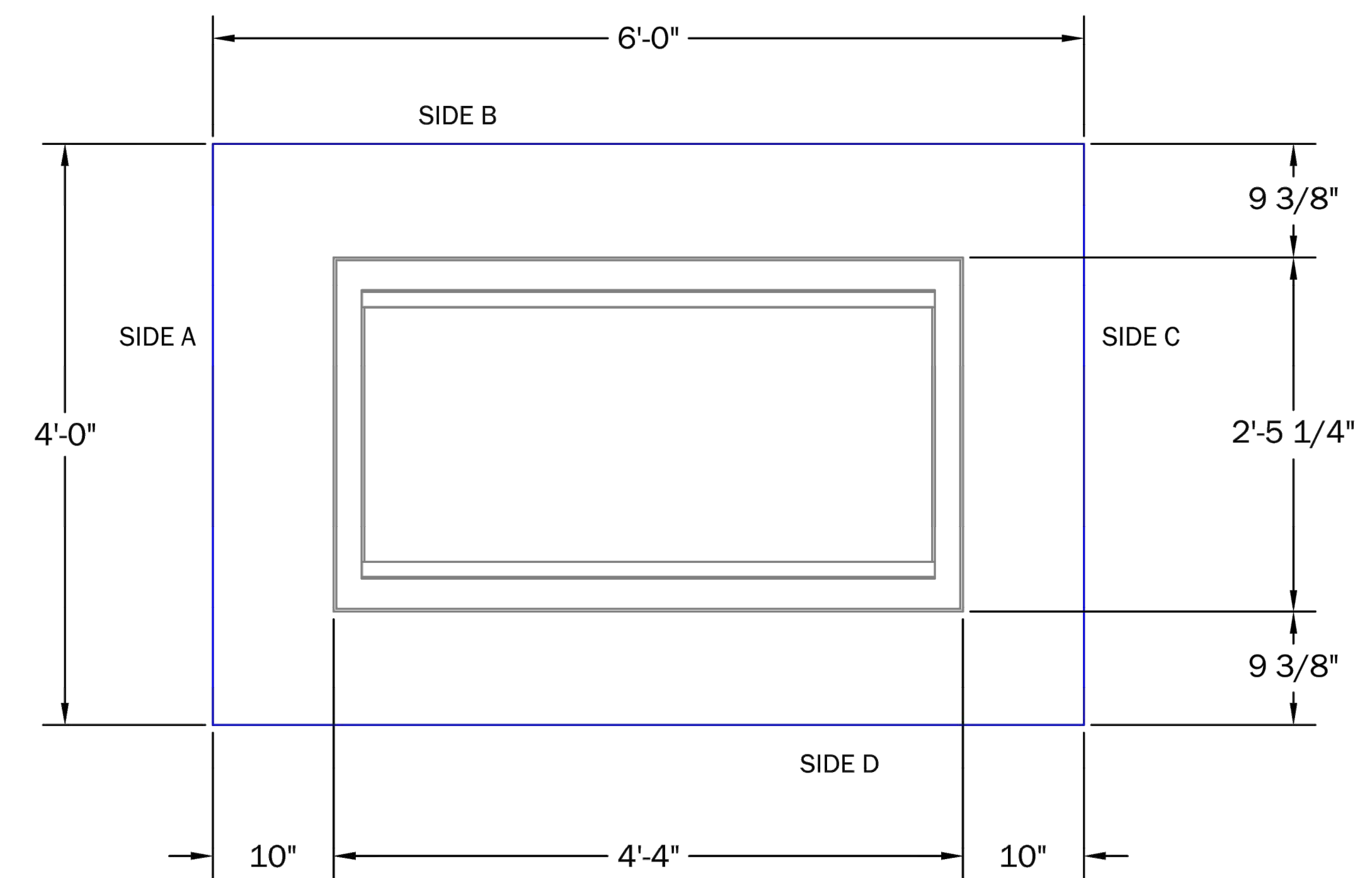
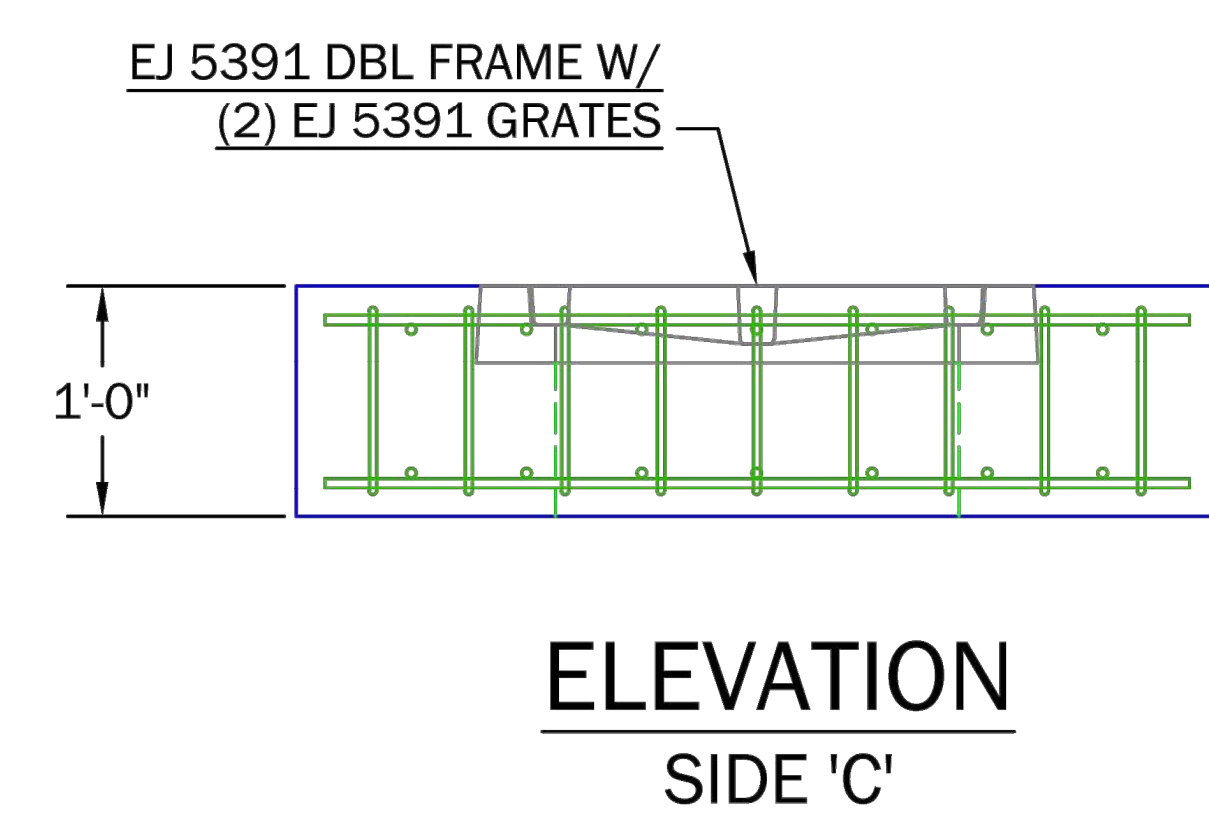
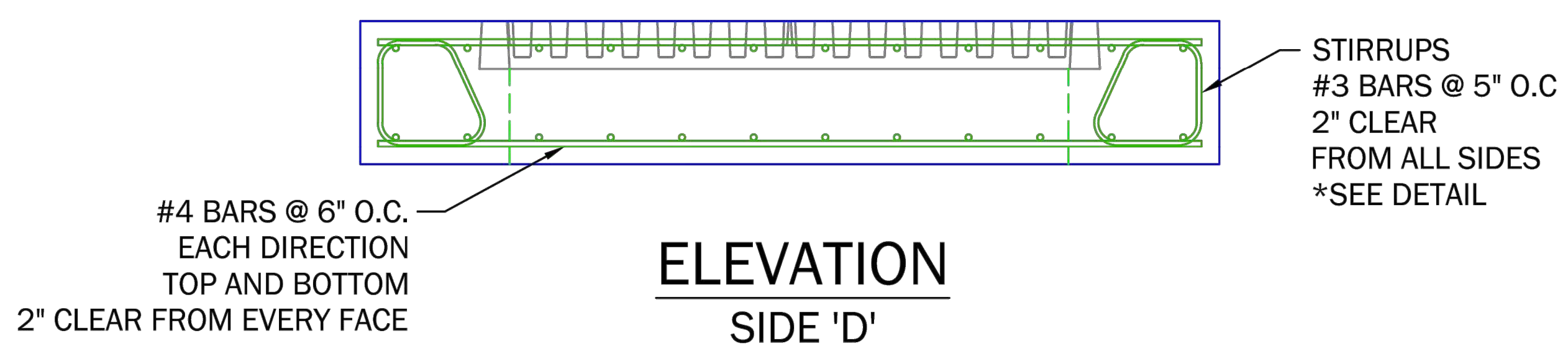
TITLE SHEET

PROJECT NO.	2022-000789-PPD	
DATE	01-16-2023	
SCALE	1"=20'	
DESIGNED	DRAWN	CHECKED
CJL	CJL	SPE
NO.	REVISION	DATE
SHEET NO.		
01 OF 10		

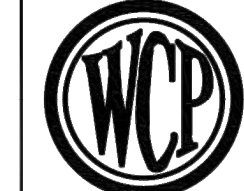
PLOTTED: Wednesday, January 18, 2023 @ 09:50AM

J:\PROJECTS\2022\201010684_CROSSLAND_VSU_P81100_220684_CAD\SH1505_CIVIL\SW\PPD\2684-05-4100.DWG

NOTE TO CONTRACTOR
SAW CUT EXISTING INLET WALLS TO
ACCOMMODATE NEW TOP



***STIRRUP BAR DETAIL**
NOT TO SCALE

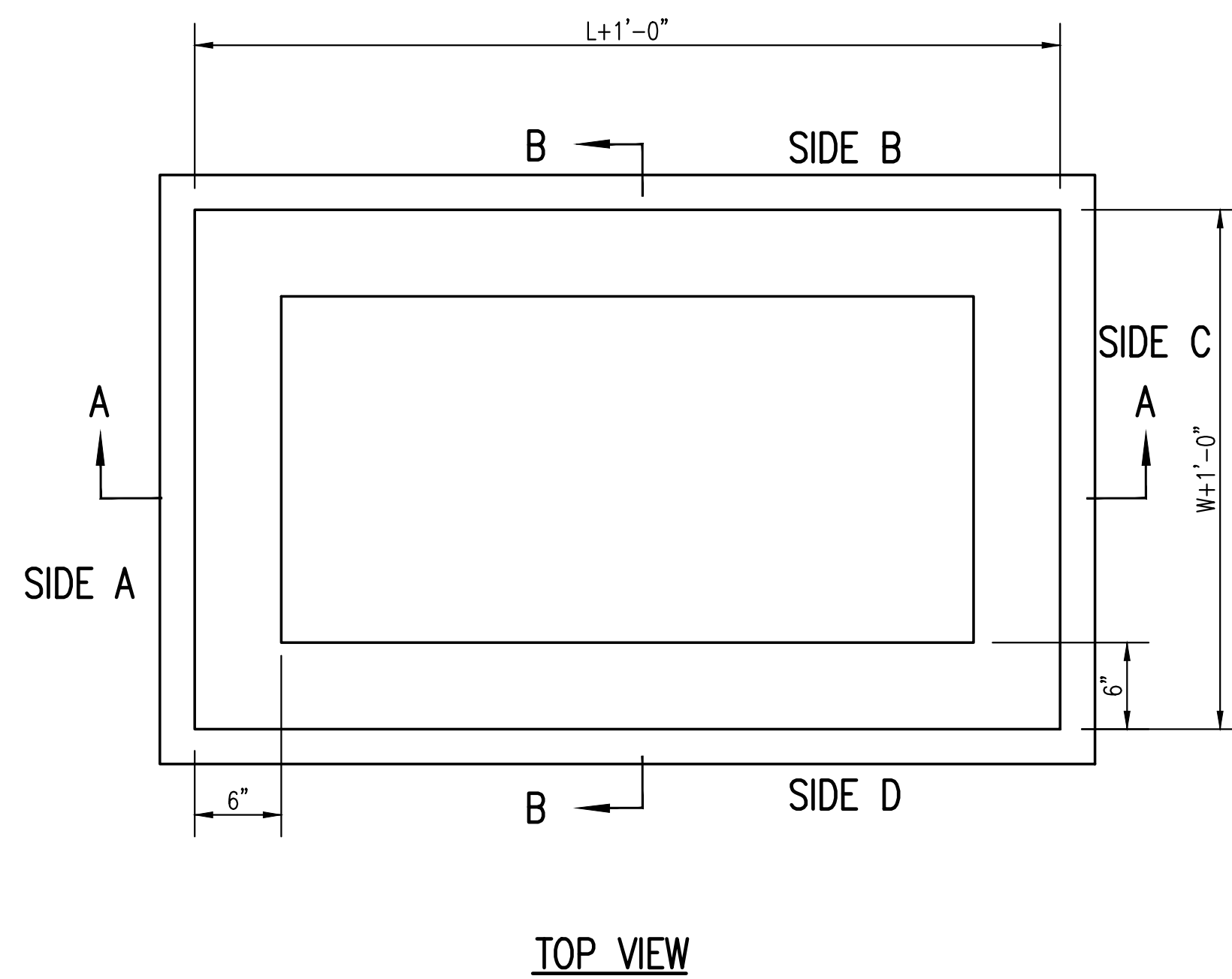
	WICHITA CONCRETE PIPE COMPANY	
	221 W. 37th St. North, Wichita, KS. 67204 (316)-838-8651	
SPECIAL D-DROP TOP		

©2022 MKEC Engineering All Rights Reserved www.mkec.com
These drawings and their contents, including, but not limited to, all concepts, designs, & ideas are the exclusive property of MKEC Engineering (MKEC), and may not be used or reproduced in any way without the express consent of MKEC.

CURB INLET MODIFICATION DETAIL

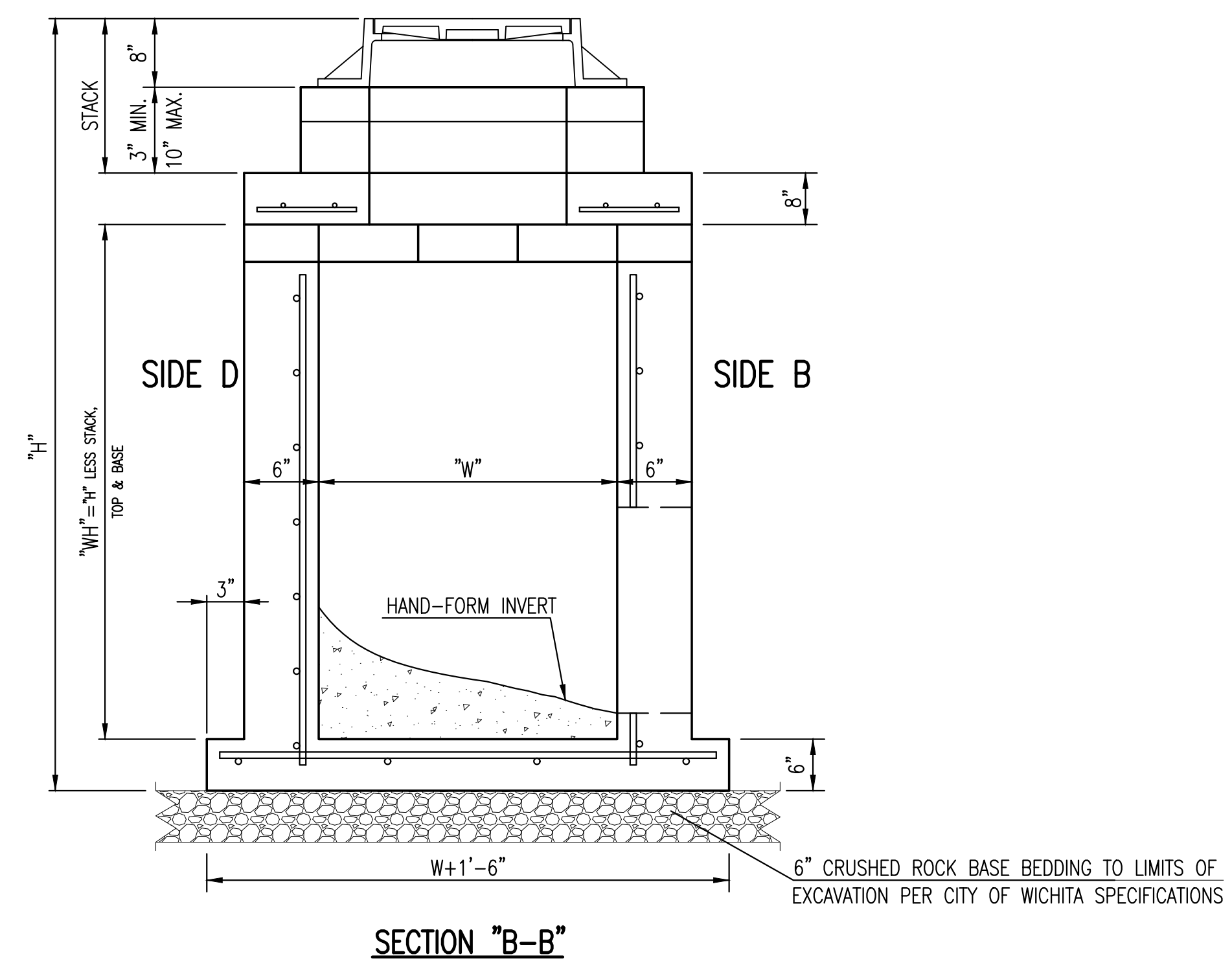
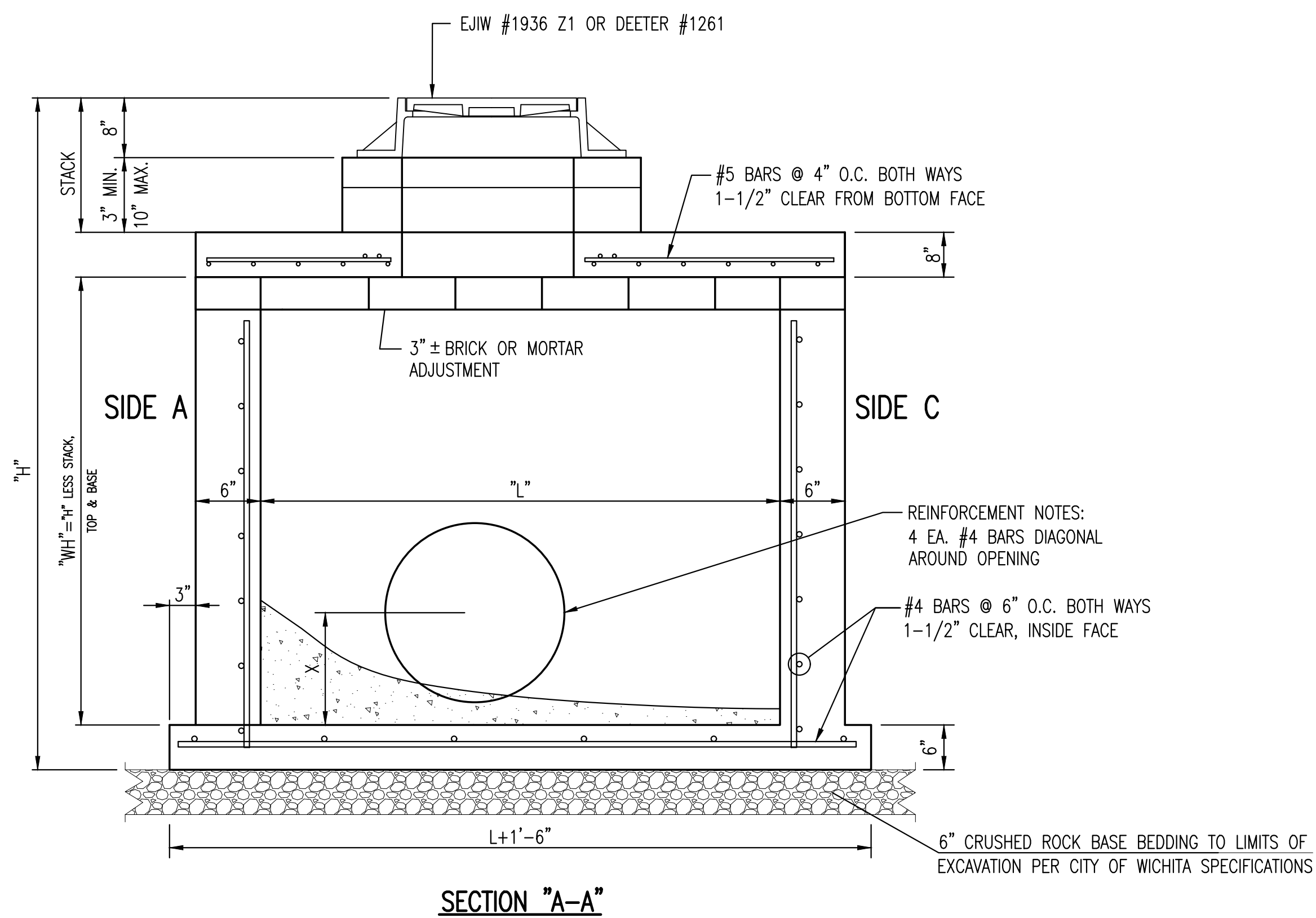
PROJECT NO.	2022-000789-PPD	
DATE	01-16-2023	
SCALE	1"=20'	
DESIGNED	DRAWN	CHECKED
C-JL	C-JL	SPE

NO.	REVISION	DATE



GENERAL NOTES

1. GRATE FRAME TO BE INSTALLED ON THIN MORTAR CUSHION TO INSURE FULL SUPPORT ALONG BRICK. CONCRETE USED FOR INLET CONSTRUCTION SHALL CONFORM TO CITY OF WICHITA SPECIFICATIONS FOR CONCRETE PAVEMENT MIX.
2. INLET INVERT SHALL BE SHAPED WITH 8 SACK SAND MIX CONCRETE TO CREATE FLOW CHANNELS AND TO INCREASE HYDRAULIC EFFICIENCY SUCH THAT THE INLET WILL BE SELF CLEANING BETWEEN ALL INLET AND/OR OUTLET PIPES.
3. THE ENDS OF ALL PIPES INSTALLED IN INLETS SHALL BE CUT OFF FLUSH WITH THE INSIDE FACE OF THE INLET WALL.
4. INLET FRAME AND GRATE TO BE DEETER #1261, EJIW #1936-Z1 OR APPROVED EQUAL, SEE SW-303.
5. CONTRACTOR SHALL REMOVE LIFTING HOOKS AFTER INSTALLATION. RECESSES IN MANHOLE WALL SHALL BE GROUTED FLUSH TO THE MANHOLE WALL WITH HYDRAULIC CEMENT AFTER THE MANHOLE IS IN PLACE. LIFTING HOLES THRU THE MANHOLE WALL WILL NOT BE ACCEPTED.



Saved 11-06-2022 1:51:47 PM by CLEHMAN
 Plot Scale 1:1 01-18-2023 9:51:21 AM by COLE, LEHMAN
 J:\Projects\2022\201010684_Crossland_WSU PB11\00 220684 CAD\SHTS\05 Civil\Sws\PPD\SW-302-Reinf Conc Manhole



REINFORCED CONCRETE MANHOLE (STORM SEWER)		
CITY ENGINEER GARY JANZEN, P.E.		
PROJECT NUMBER 2022-000789-PPD	OCA NUMBER ####	DATE 01-16-2023
CITY ENGINEER'S OFFICE CITY HALL - SEVENTH FLOOR 455 NORTH MAIN STREET WICHITA, KANSAS 67202-1620 (316) 268-4501		SHEET 08 OF 10

REVISED: MARCH 2015

SW-302

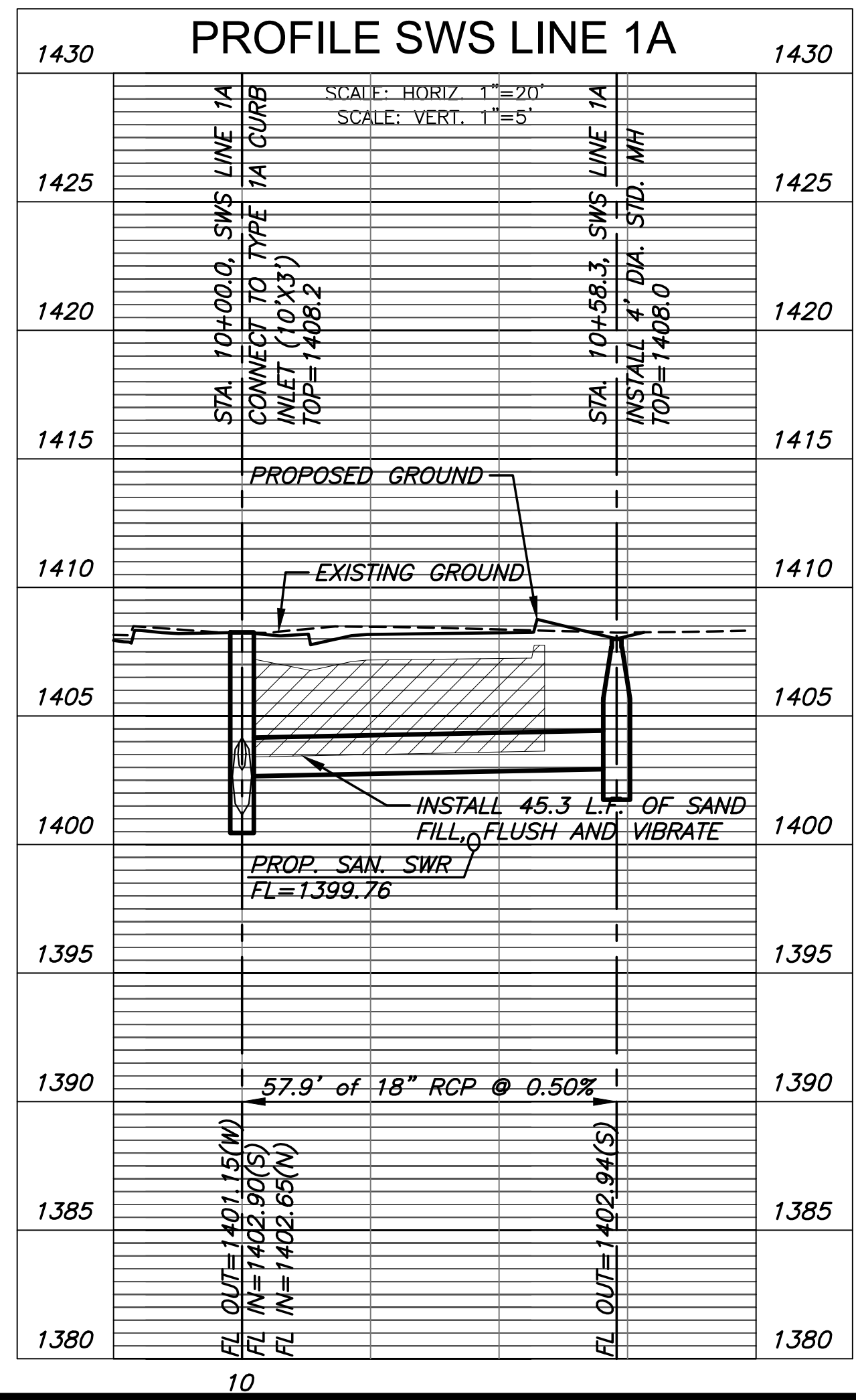
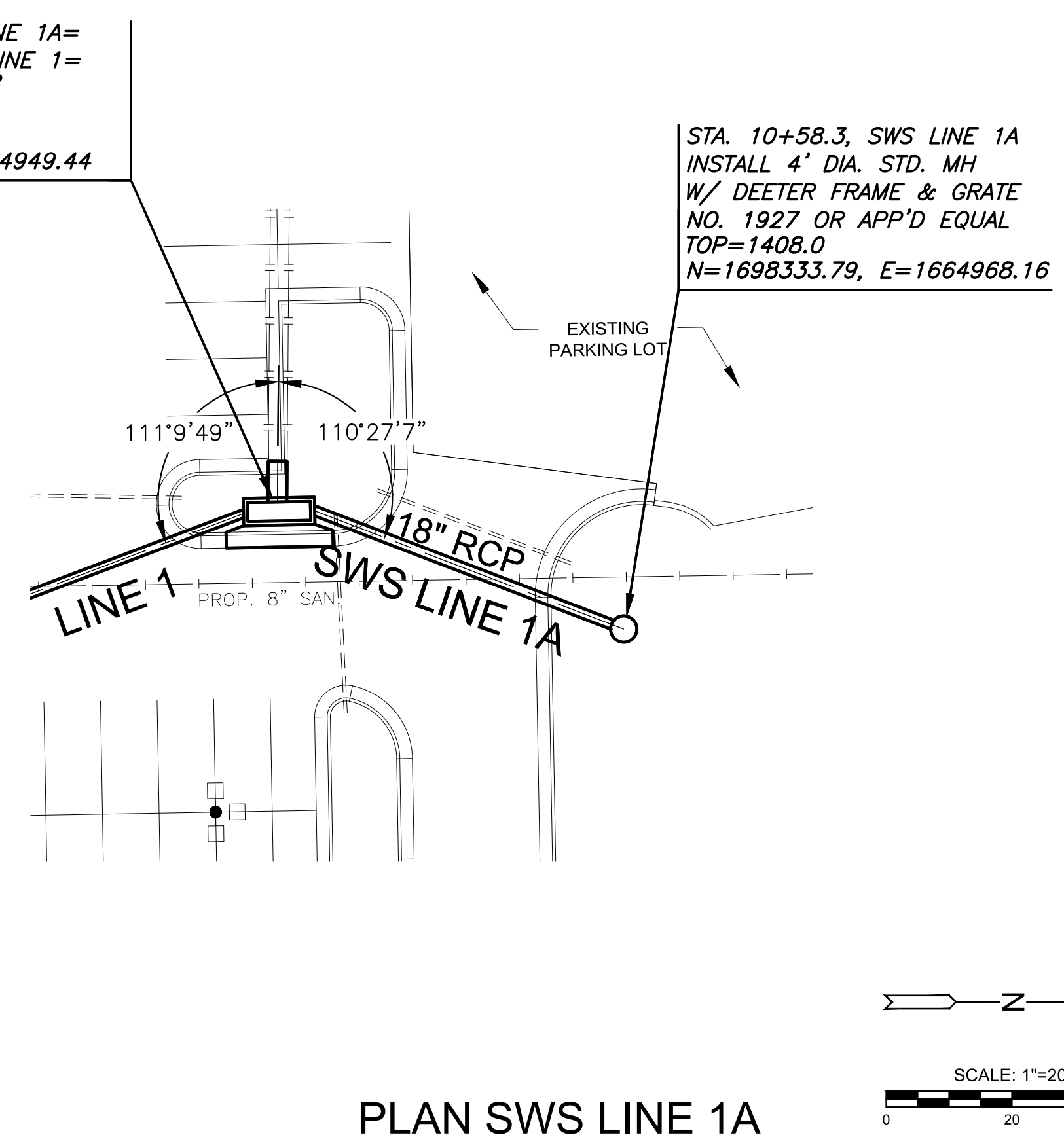
J:\Projects\2022\201010684_Crossland_WSU PB11\00 220684 CAD\SHTS\05 Civil\Sws\PPD\SW-302-Reinf Conc Manhole.dwg

©2022
MKEC Engineering
All Rights Reserved
www.mkec.com
These drawings and their contents, including, but not limited to, all concepts, designs, & ideas are the exclusive property of MKEC Engineering (MKEC), and may not be used or reproduced in any way without the express consent of MKEC.


LINE 1 & LINE 1A

PROJECT NO.	2022-000789-PPD	
DATE	01-16-2023	
SCALE	1"=20'	
DESIGNED	DRAWN	CHECKED
CJL	CJL	SPE

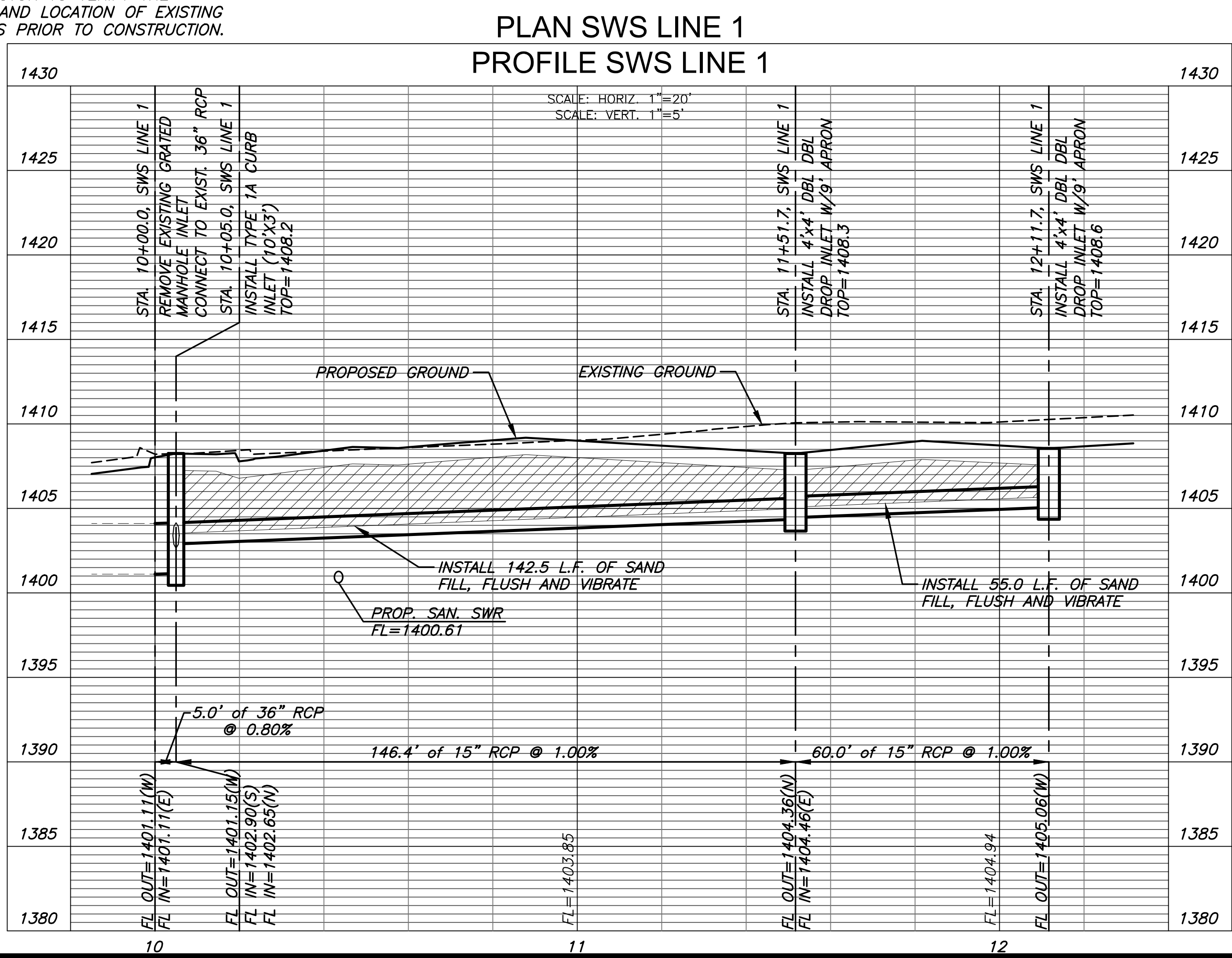
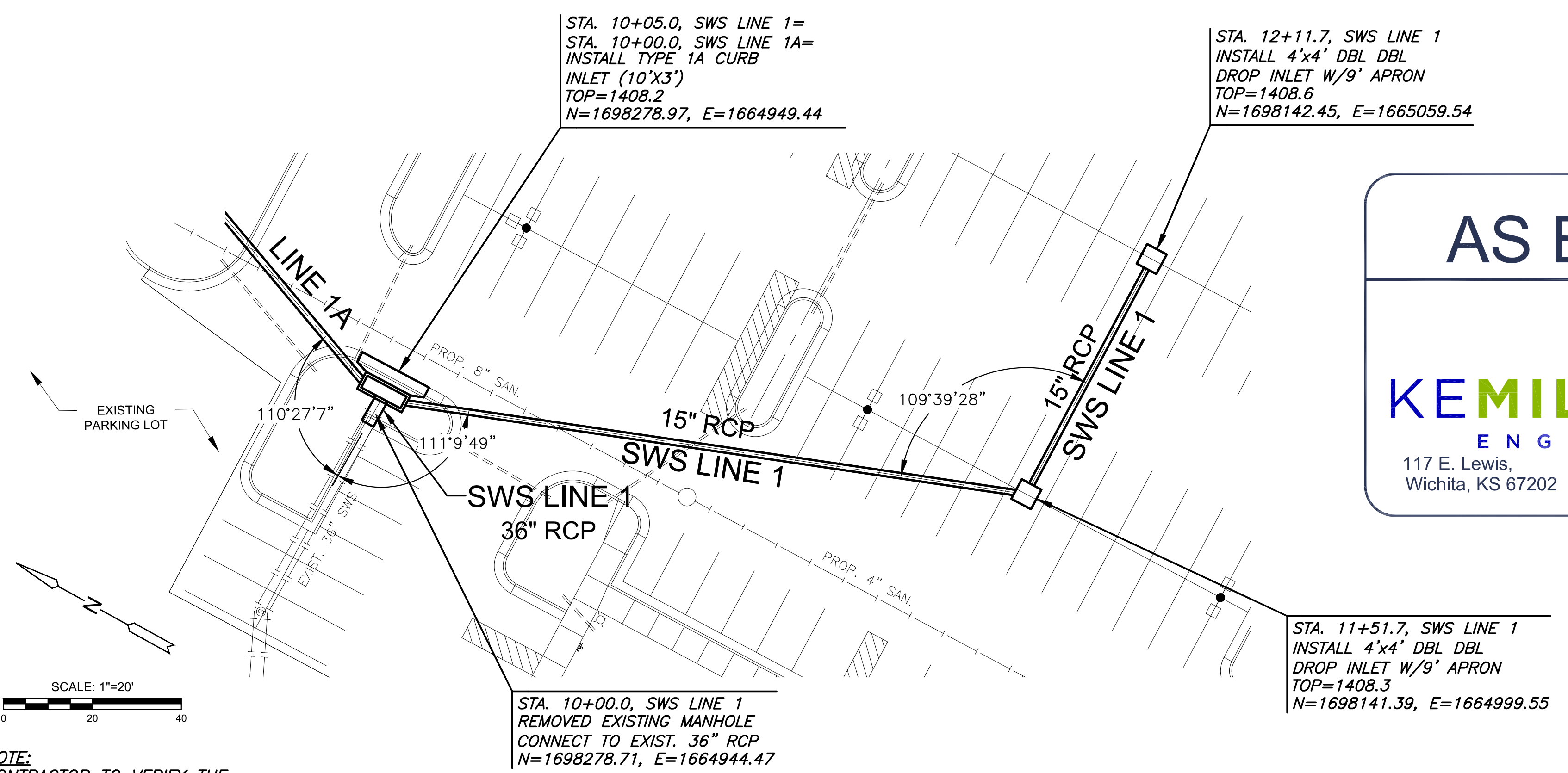
NO.	REVISION	DATE



AS BUILTS



KEMILLER ENGINEERING PA
117 E. Lewis,
Wichita, KS 67202 (316)264-0242



J:\PROJECTS\2022\2201010684_CROSSBLAND_VSU_P81100_220684_CAD\SHOTS\05_CIVIL\SWS\PPD\22684-09-4200.DWG
 PLOTTED: Wednesday, January 18, 2023 @ 10:14 AM

NOTE:
CONTRACTOR TO VERIFY THE DEPTH AND LOCATION OF EXISTING UTILITIES PRIOR TO CONSTRUCTION.

PLOTTED: Wednesday, January 18, 2023 @ 10:14 AM
 J:\PROJECTS\2022\201010684_CROSSBLAND_WSU_P81100_220684_CAD\SHOTS\05_CIVIL\SWS\PPD\22684-05-4201.DWG



PRIVATE STORM WATER DRAINAGE PLANS FOR
WSU PARTNERSHIP BUILDING 11
 WICHITA, KS

©2023
 MKEC Engineering
 All Rights Reserved
 www.mkec.com
 These drawings and their contents, including, but not limited to, all concepts, designs, & ideas are the exclusive property of MKEC Engineering (MKEC), and may not be used or reproduced in any way without the express consent of MKEC.

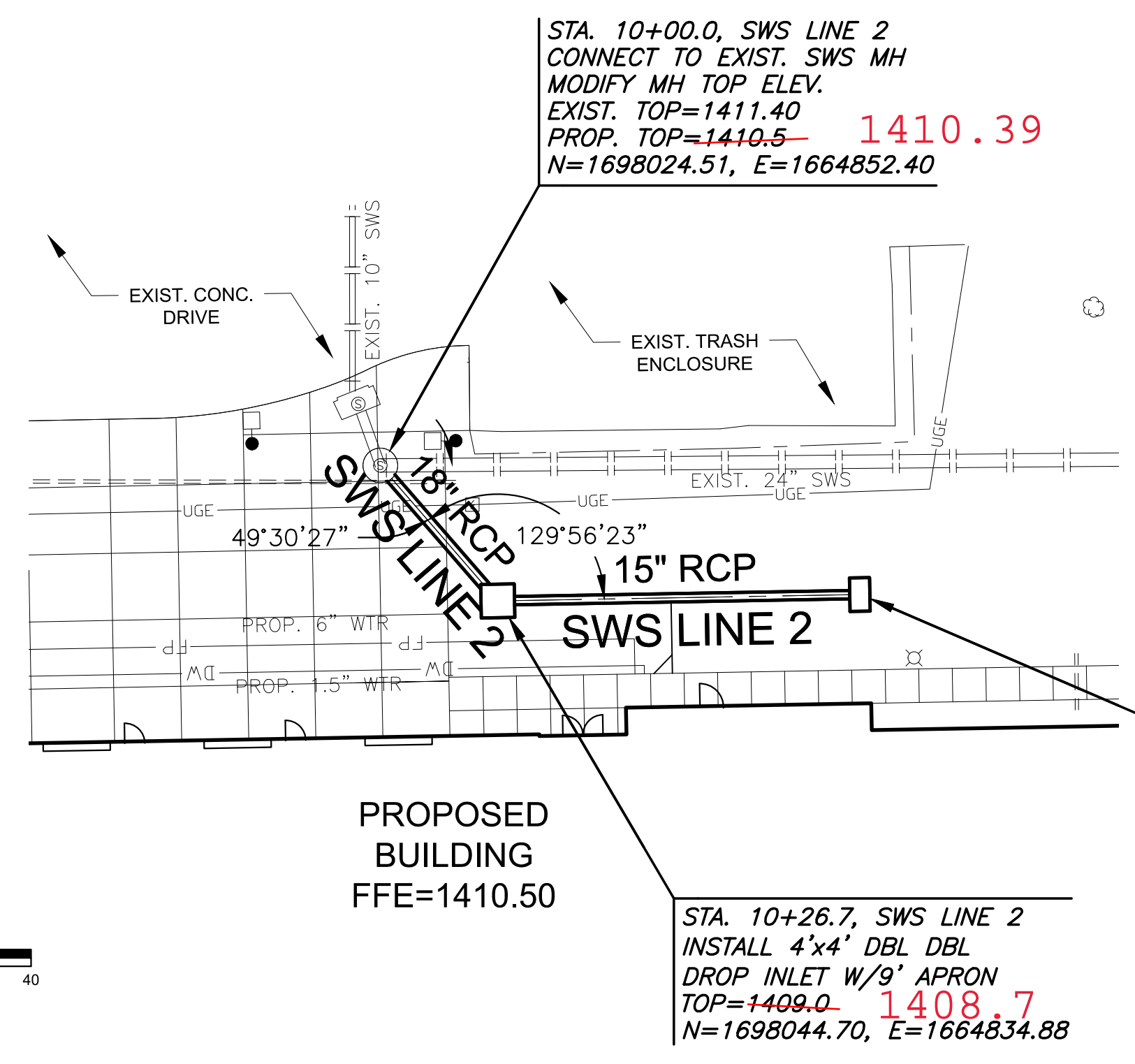
LINE 2 & MODIFIED CURB INLETS

PROJECT NO.	2022-000789-PPD	
DATE	01-16-2023	
SCALE	1"=20'	
DESIGNED	DRAWN	CHECKED
CJL	CJL	SPE

NO.	REVISION	DATE

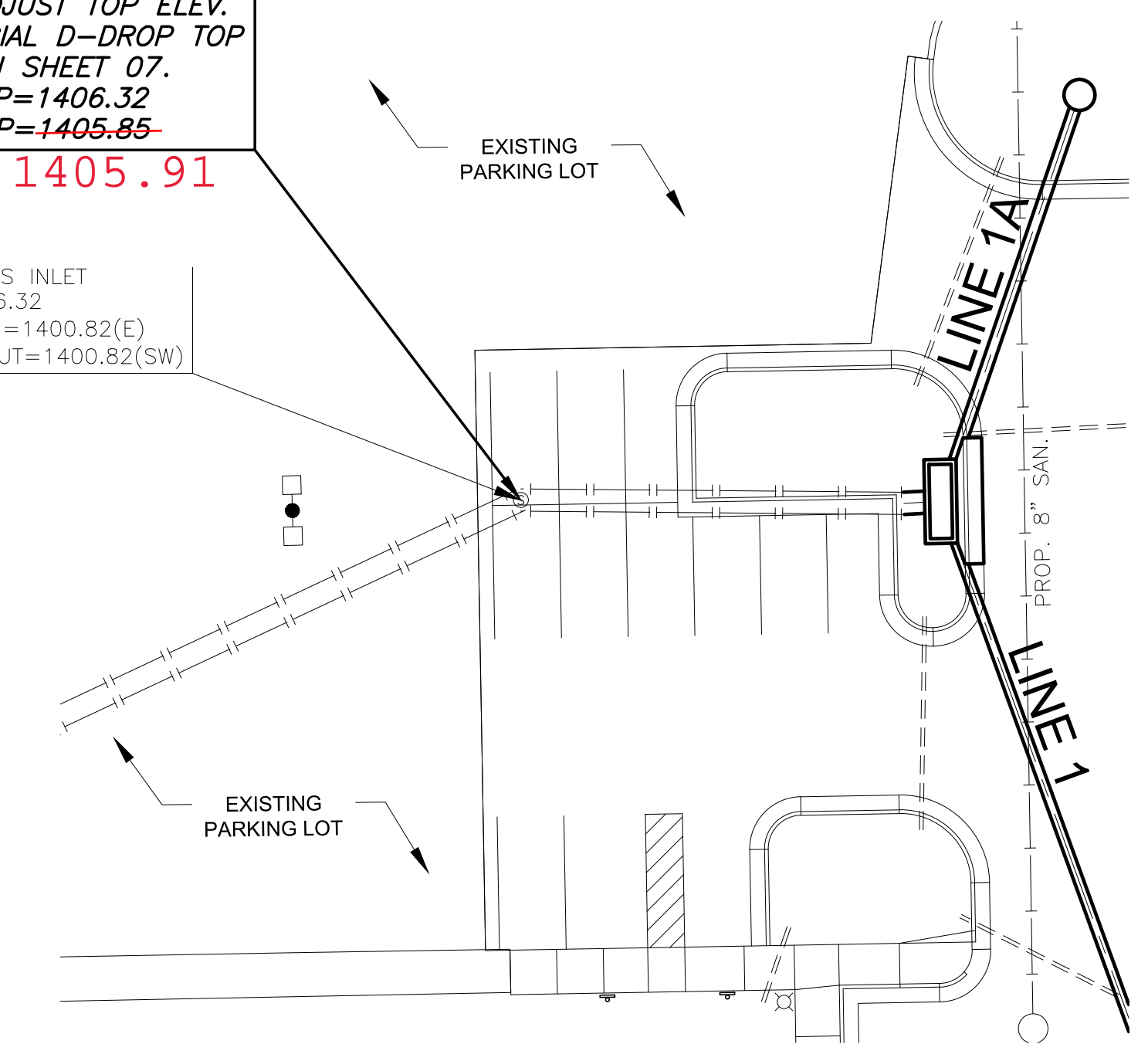
AS BUILTS

KEMILLER
 ENGINEERING PA
 117 E. Lewis,
 Wichita, KS 67202 (316)264-0242

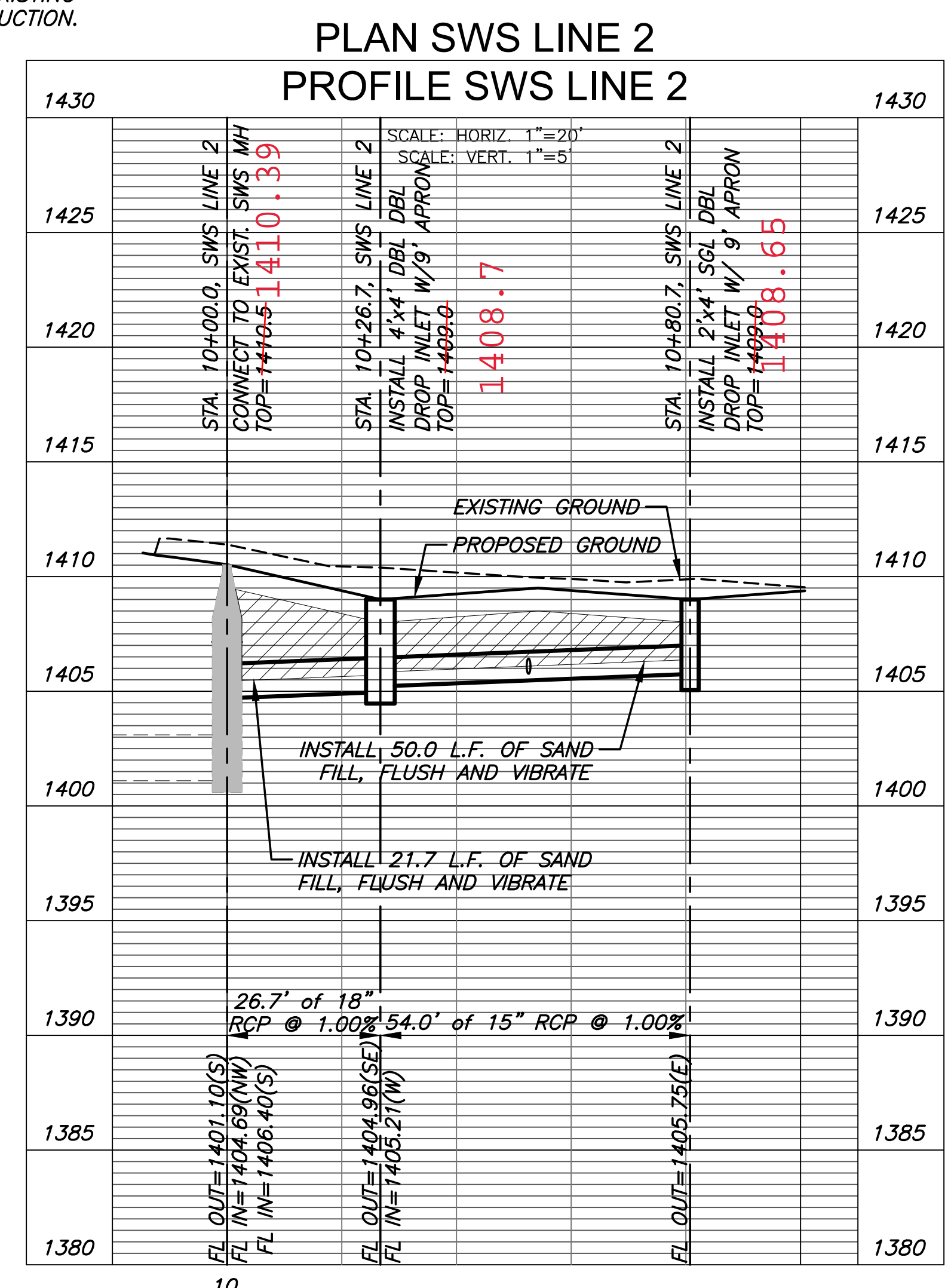


MODIFY EXIST. CURB INLET.
 CUT EXIST. INLET AS
 NEEDED TO INSTALL NEW
 TOP & ADJUST TOP ELEV.
 SEE SPECIAL D-DROP TOP
 DETAIL ON SHEET 07.
 EXIST. TOP=1406.32
 PROP. TOP=~~1405.85~~ **1405.91**

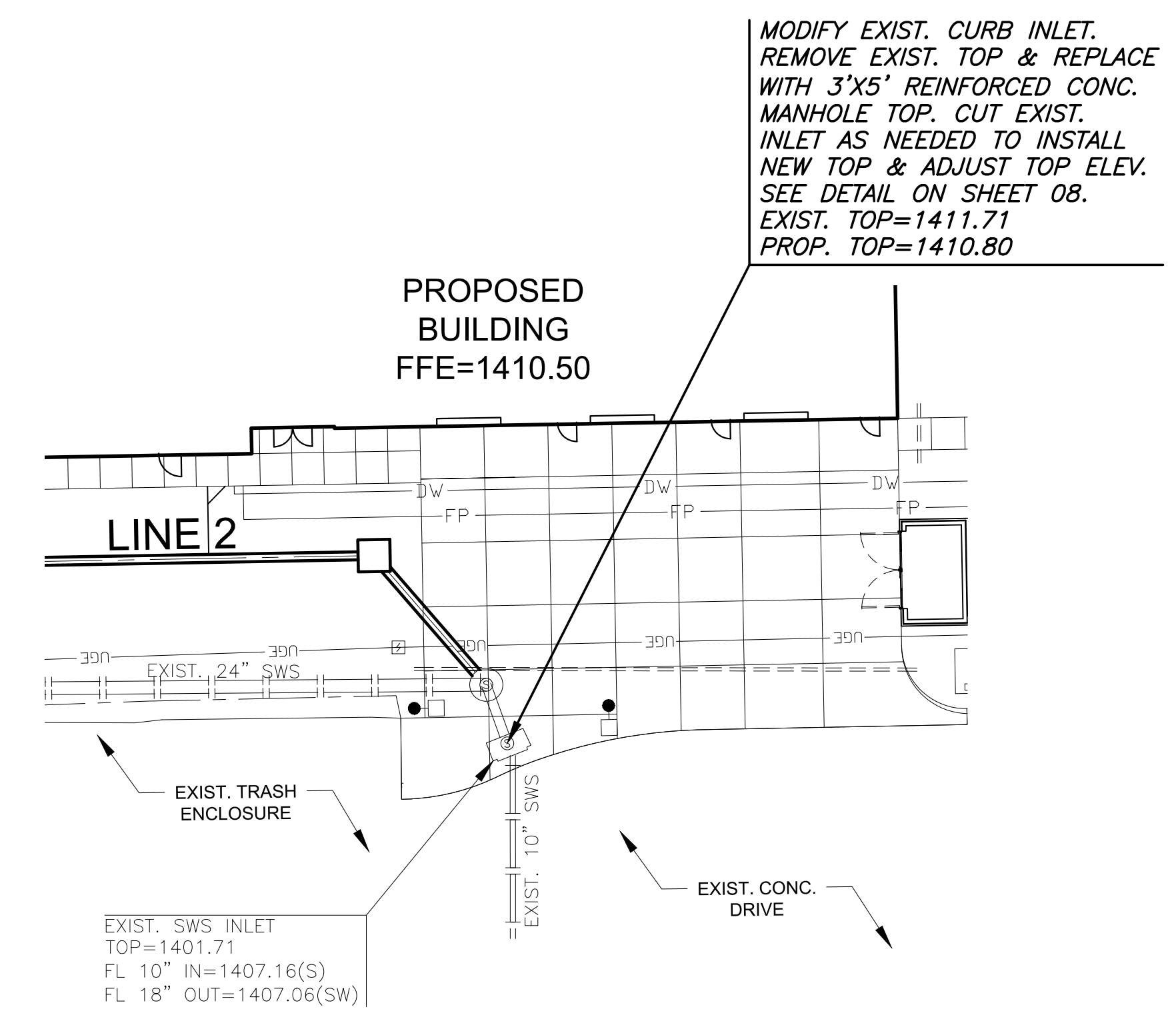
EXIST. SWS INLET
 TOP=1406.32
 FL 36" IN=1400.82(E)
 FL 36" OUT=1400.82(SW)



CURB INLET ADJUSTMENT #1



**TOPS
 WHERE
 SET TO
 SUPT.
 ORDERS**



CURB INLET ADJUSTMENT #2

NOTE:
 CONTRACTOR TO VERIFY THE
 DEPTH AND LOCATION OF EXISTING
 UTILITIES PRIOR TO CONSTRUCTION.

