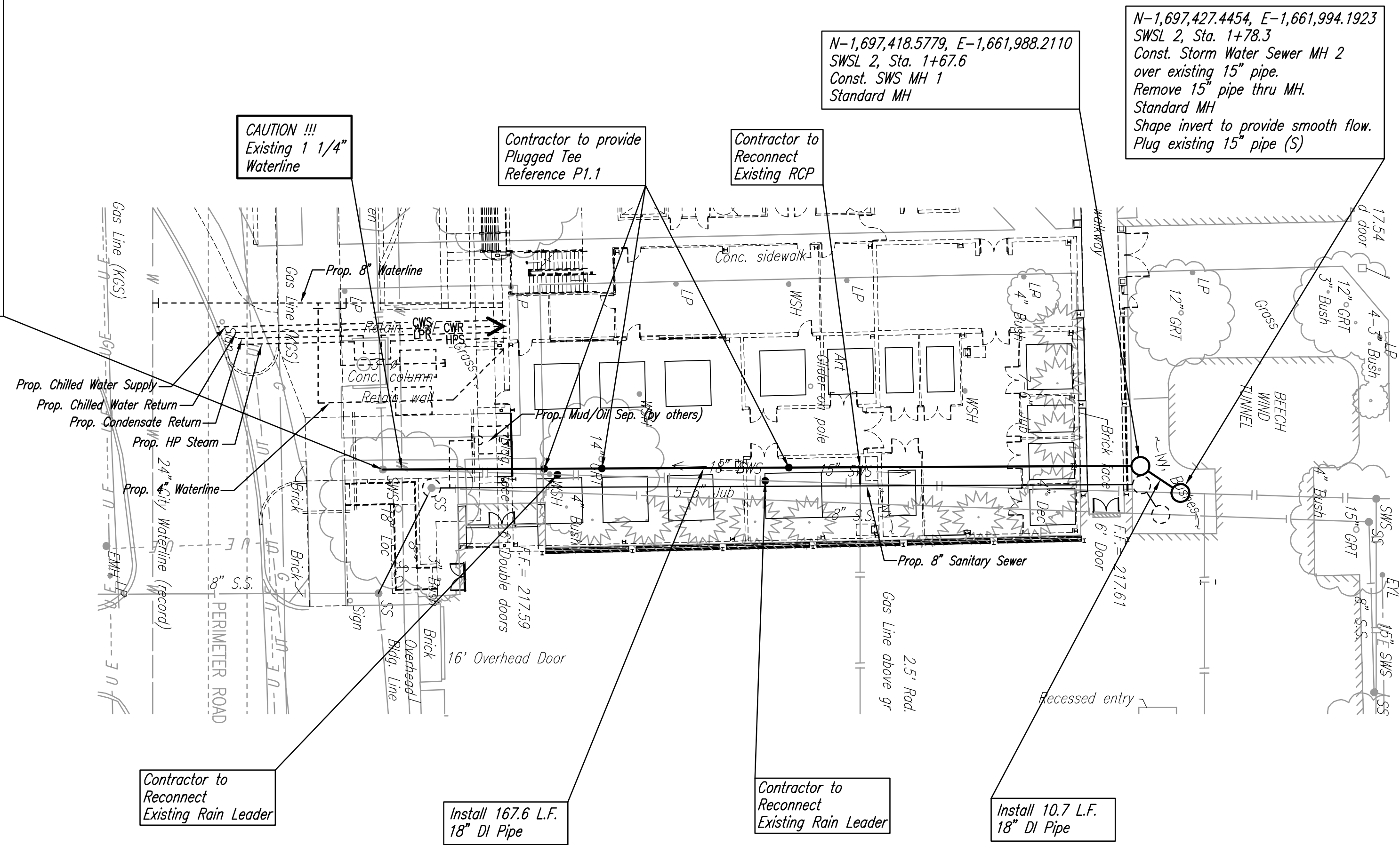


PLAN	CHECKED	CHECKED
BY		
DATE		

PROFILE	CHECKED	CHECKED
BY		
DATE		

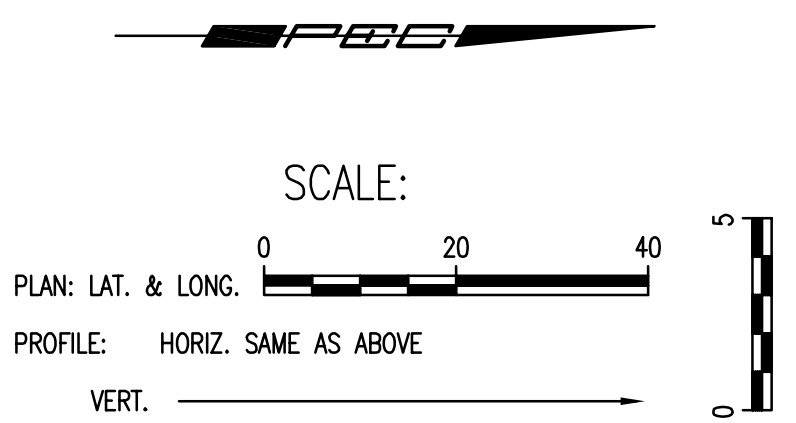
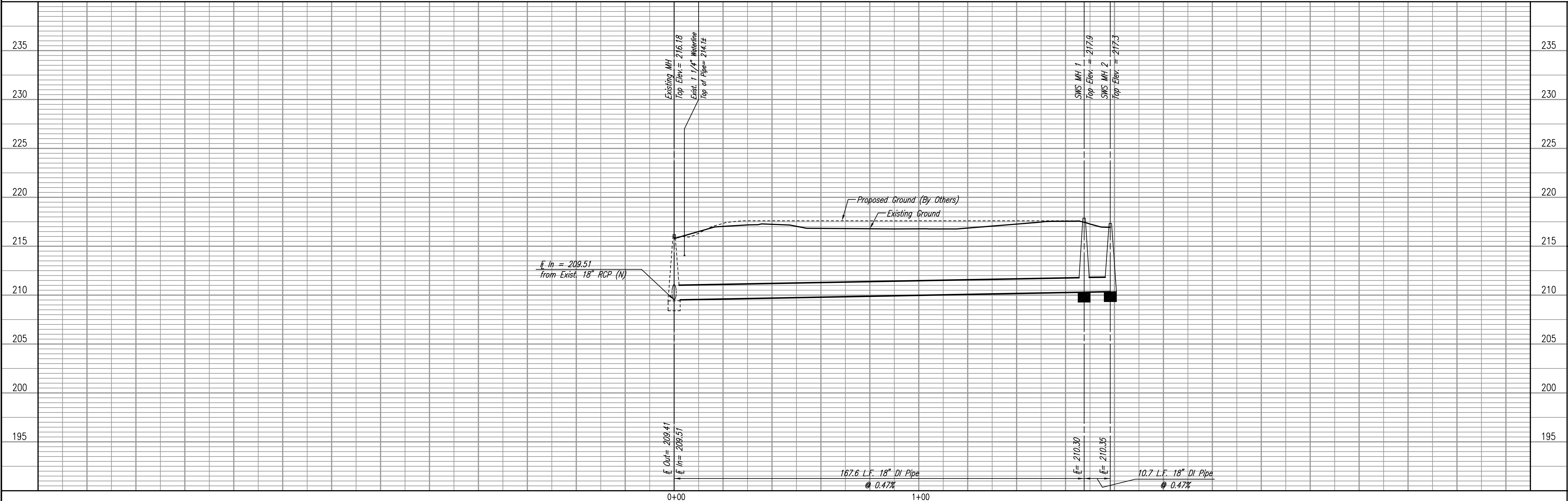
DSNR: OPER: TLB SCALE: 1=20.00  
 C:\2003\03085\001\Final\PPS\SWSupp02 07-01-2005 04:49:43 pm

N-1,697,250.9518, E-1,661,988.9891  
 SWSL 2, Sta. 0+00.0\*  
 Core existing concrete wall and  
 Install New 18" Pipe. Seal new 18"  
 Pipe with an approved watertop  
 gasket and non-shrink grout.  
 Construct a minimum of  
 3' Reinforced Concrete Encasement  
 from wall. Reshape floor to provide  
 smooth flow. This work shall be  
 considered subsidiary to the price  
 bid for pipe in place.  
 Remove & Replace Existing Storm  
 Water Sewer MH top in accordance  
 with City of Wichita Requirements.  
 Existing Top Elev.= 215.91  
 Proposed Top Elev.= 216.18  
 Total Adjustment required= .27'  
 See details sheet 7 & 8  
 (Sheet C3.0 & C3.1 (Arch. Plans))



\* PRIOR TO BEGINNING CONSTRUCTION, THE CONTRACTOR SHALL EXCAVATE THE EXISTING 18" PIPE AT STORM WATER SEWER STATION 0+00.0 TO VERIFY ITS HORIZONTAL AND VERTICAL LOCATION. THE PIPE LOCATION SHALL BE REPORTED TO THE ENGINEER SO THAT ANY NECESSARY PLAN MODIFICATIONS CAN BE MADE. ANY ADDITIONAL LABOR OR MATERIALS NECESSARY TO COMPLETE THE CONNECTION SHALL BE CONSIDERED SUBSIDIARY TO THE PROJECT.

STORM WATER SEWER LINE NO. 2



WICHITA STATE UNIVERSITY - ENGINEERING COMPLEX  
**STORM WATER SEWER LINE NO. 2**  
 JAMES L. ARMOUR, P.E. - CITY ENGINEER  
 CITY OF WICHITA PRIVATE PROJECT NO. 1520 PPS (607861)

Professional Engineering Consultants, P.A.  
 803 S. TOPICKA AVENUE, WICHITA, KANSAS 67202  
 316-262-2691 • FAX 316-262-3008

Designed By: RRY/MLA  
 Drawn By: JCA

Job No.: 35-03085-001-2474  
 Date: December 2004