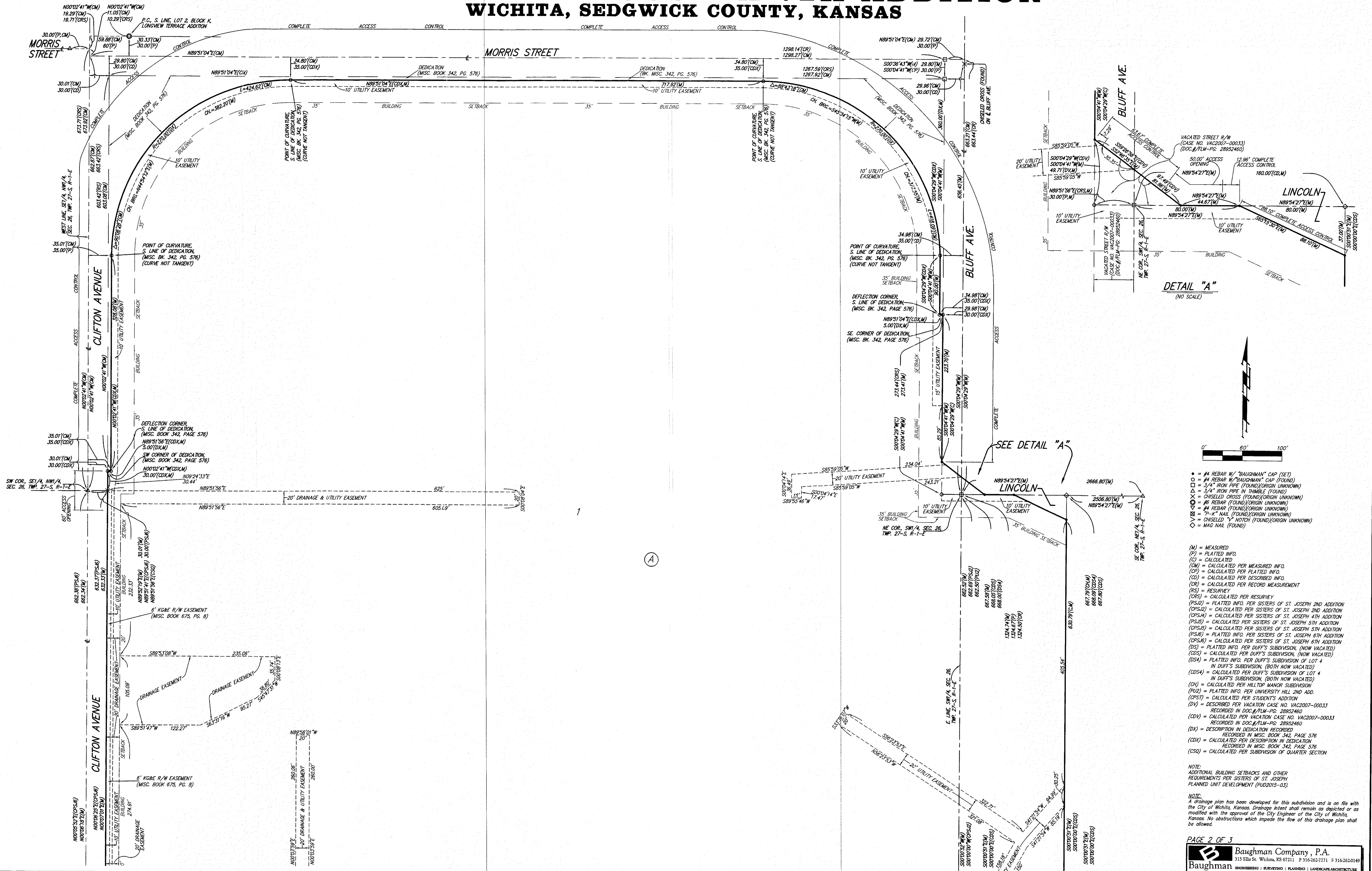


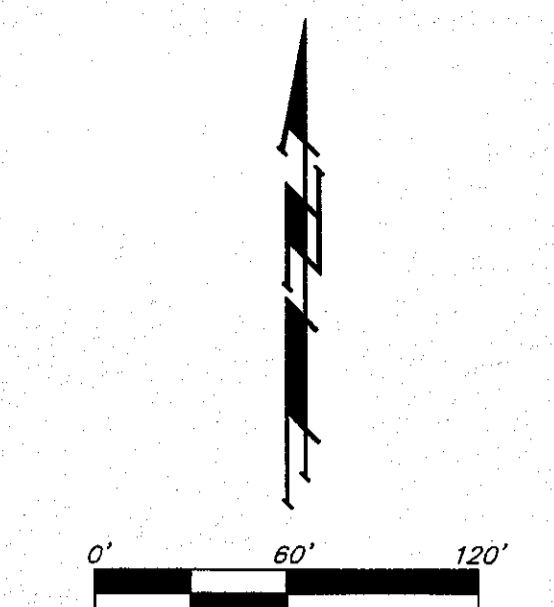
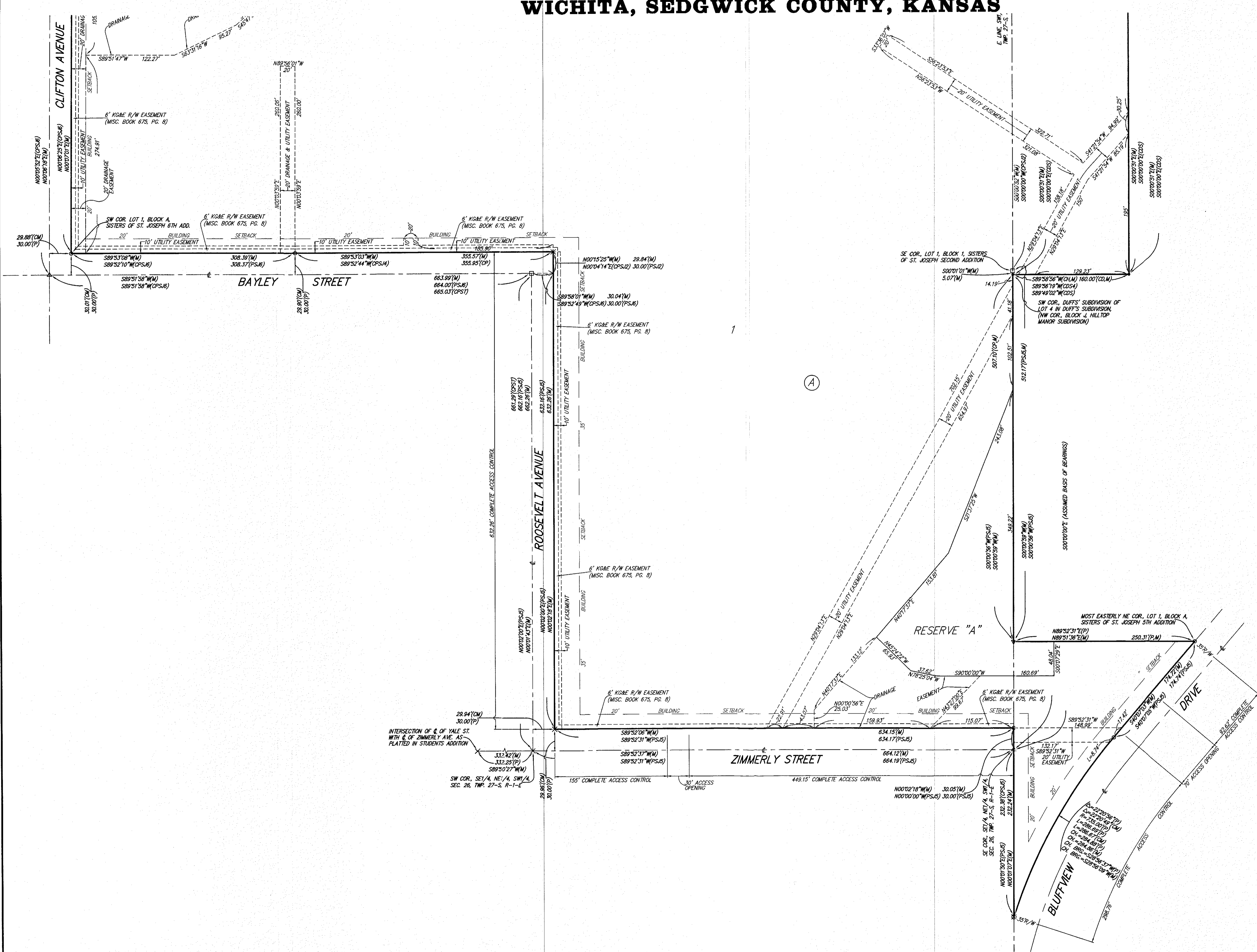
SISTERS OF ST. JOSEPH 7TH ADDITION WICHITA, SEDGWICK COUNTY, KANSAS



- #4 REBAR W/ "BAUGHMAN" CAP (SET)
 - #4 REBAR W/ "BAUGHMAN" CAP (FOUND)
 - 3/4" IRON PIPE (FOUND)(ORIGIN UNKNOWN)
 - △ 3/4" IRON PIPE IN THIMBLE (FOUND)
 - × CHISELED CROSS (FOUND)(ORIGIN UNKNOWN)
 - ⊗ #6 REBAR (FOUND)(ORIGIN UNKNOWN)
 - ⊙ #4 REBAR (FOUND)(ORIGIN UNKNOWN)
 - ⊕ "P-K" NAIL (FOUND)(ORIGIN UNKNOWN)
 - ◇ CHISELED "Y" NOTCH (FOUND)(ORIGIN UNKNOWN)
 - ◇ MAG NAIL (FOUND)
- (M) = MEASURED
(P) = PLATTED INFO.
(C) = CALCULATED
(CM) = CALCULATED PER MEASURED INFO.
(CP) = CALCULATED PER PLATTED INFO.
(CD) = CALCULATED PER DESCRIBED INFO.
(CR) = CALCULATED PER RECORD MEASUREMENT
(RS) = RESURVEY
(CRS) = CALCULATED PER RESURVEY
(PS2) = PLATTED INFO. PER SISTERS OF ST. JOSEPH 2ND ADDITION
(OPS2) = CALCULATED PER SISTERS OF ST. JOSEPH 2ND ADDITION
(PS4) = CALCULATED PER SISTERS OF ST. JOSEPH 4TH ADDITION
(OPS4) = CALCULATED PER SISTERS OF ST. JOSEPH 4TH ADDITION
(PS5) = CALCULATED PER SISTERS OF ST. JOSEPH 5TH ADDITION
(OPS5) = CALCULATED PER SISTERS OF ST. JOSEPH 5TH ADDITION
(PS6) = PLATTED INFO. PER SISTERS OF ST. JOSEPH 6TH ADDITION
(OPS6) = CALCULATED PER SISTERS OF ST. JOSEPH 6TH ADDITION
(DS) = PLATTED INFO. PER DUFF'S SUBDIVISION, (NOW VACATED)
(CDS) = CALCULATED PER DUFF'S SUBDIVISION, (NOW VACATED)
(DS4) = PLATTED INFO. PER DUFF'S SUBDIVISION OF LOT 4
IN DUFF'S SUBDIVISION, (BOTH NOW VACATED)
(CDS4) = CALCULATED PER DUFF'S SUBDIVISION OF LOT 4
IN DUFF'S SUBDIVISION, (BOTH NOW VACATED)
(CH) = CALCULATED PER HILTOP MANOR SUBDIVISION
(PU2) = PLATTED INFO. PER UNIVERSITY HILL 2ND ADD.
(OPST) = CALCULATED PER STUDENT'S ADDITION
(DV) = DESCRIBED PER VACATION CASE NO. VAC2007-00033
RECORDED IN DOC.#/FLM-PG. 28952460
(CDV) = CALCULATED PER VACATION CASE NO. VAC2007-00033
RECORDED IN DOC.#/FLM-PG. 28952460
(DX) = DESCRIBED IN DEDICATION RECORDED
RECORDED IN MISC. BOOK 342, PAGE 576
(CDX) = CALCULATED PER DESCRIPTION IN DEDICATION
RECORDED IN MISC. BOOK 342, PAGE 576
(CSD) = CALCULATED PER SUBDIVISION OF QUARTER SECTION
- NOTE:
ADDITIONAL BUILDING SETBACKS AND OTHER
REQUIREMENTS PER SISTERS OF ST. JOSEPH
PLANNED UNIT DEVELOPMENT (PUD2015-03).
- NOTE:
A drainage plan has been developed for this subdivision and is on file with
the City of Wichita, Kansas. Drainage intent shall remain as depicted or as
modified with the approval of the City Engineer of the City of Wichita,
Kansas. No obstructions which impede the flow of this drainage plan shall
be allowed.

SISTERS OF ST. JOSEPH 7TH ADDITION

WICHITA, SEDGWICK COUNTY, KANSAS



- = #4 REBAR W/ "BAUGHMAN" CAP (SET)
- = #4 REBAR W/ "BAUGHMAN" CAP (FOUND)
- = 3/4" IRON PIPE (FOUND)(ORIGIN UNKNOWN)
- △ = 3/4" IRON PIPE IN THIMBLE (FOUND)
- ⊗ = CHASED CROSS (FOUND)(ORIGIN UNKNOWN)
- ⊙ = #6 REBAR (FOUND)(ORIGIN UNKNOWN)
- ⊕ = #4 REBAR (FOUND)(ORIGIN UNKNOWN)
- ⊖ = "K" NAIL (FOUND)(ORIGIN UNKNOWN)
- ∇ = CHASED "V" NOTCH (FOUND)(ORIGIN UNKNOWN)
- ◇ = MAG NAIL (FOUND)

- (M) = MEASURED
- (P) = PLATTED INFO.
- (C) = CALCULATED
- (CM) = CALCULATED PER MEASURED INFO.
- (CP) = CALCULATED PER PLATTED INFO.
- (CD) = CALCULATED PER DESCRIBED INFO.
- (CR) = CALCULATED PER RECORD MEASUREMENT
- (RS) = RESURVEY
- (CRS) = CALCULATED PER RESURVEY
- (PS.12) = PLATTED INFO. PER SISTERS OF ST. JOSEPH 2ND ADDITION
- (OPS.12) = CALCULATED PER SISTERS OF ST. JOSEPH 2ND ADDITION
- (CPS.14) = CALCULATED PER SISTERS OF ST. JOSEPH 4TH ADDITION
- (PS.15) = CALCULATED PER SISTERS OF ST. JOSEPH 5TH ADDITION
- (CPS.15) = CALCULATED PER SISTERS OF ST. JOSEPH 5TH ADDITION
- (PS.16) = PLATTED INFO. PER SISTERS OF ST. JOSEPH 6TH ADDITION
- (CPS.16) = CALCULATED PER SISTERS OF ST. JOSEPH 6TH ADDITION
- (OS) = PLATTED INFO. PER DUFF'S SUBDIVISION, (NOW VACATED)
- (COS) = CALCULATED PER DUFF'S SUBDIVISION, (NOW VACATED)
- (DS4) = PLATTED INFO. PER DUFF'S SUBDIVISION OF LOT 4 IN DUFF'S SUBDIVISION, (BOTH NOW VACATED)
- (CDS4) = CALCULATED PER DUFF'S SUBDIVISION OF LOT 4 IN DUFF'S SUBDIVISION, (BOTH NOW VACATED)
- (CH) = CALCULATED PER HILLTOP MANOR SUBDIVISION
- (PU2) = PLATTED INFO. PER UNIVERSITY HILL 2ND ADD.
- (CPS1) = CALCULATED PER STUDENT'S ADDITION
- (DV) = DESCRIBED PER VACATION CASE NO. VAC2007-00033 RECORDED IN DOC#FLM-PC: 28952460
- (CDV) = CALCULATED PER VACATION CASE NO. VAC2007-00033 RECORDED IN DOC#FLM-PC: 28952460
- (DX) = DESCRIPTION IN DEDICATION RECORDED
- (CDX) = CALCULATED PER DESCRIPTION IN DEDICATION RECORDED IN MISC. BOOK 342, PAGE 576
- (CS) = CALCULATED PER SUBDIVISION OF QUARTER SECTION

NOTE:
ADDITIONAL BUILDING SETBACKS AND OTHER REQUIREMENTS PER SISTERS OF ST. JOSEPH PLANNED UNIT DEVELOPMENT (PUD2015-03).

NOTE:
A drainage plan has been developed for this subdivision and is on file with the City of Wichita, Kansas. Drainage intent shall remain as depicted or as modified with the approval of the City Engineer of the City of Wichita, Kansas. No obstructions which impede the flow of this drainage plan shall be allowed.

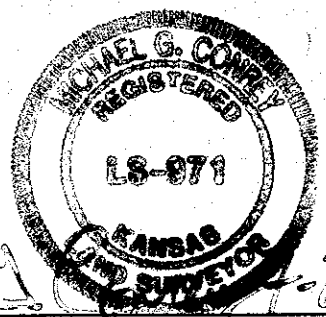
SISTERS OF ST. JOSEPH 7TH ADDITION WICHITA, SEDGWICK COUNTY, KANSAS

State of Kansas) SS We, Baughman Company, P.A., Surveyors in
Sedgwick County) Sedgwick County do hereby certify that we have surveyed and
of aforesaid county and state do hereby certify that we have surveyed and
platted "SISTERS OF ST. JOSEPH 7TH ADDITION", Wichita, Sedgwick County,
Kansas and that the accompanying plat is a true and correct exhibit of
the property surveyed, described as follows: The Southeast Quarter of the
Northwest Quarter of Section 26, Township 27 South, Range 1 East of the
6th P.M., Sedgwick County, Kansas, except that portion platted as
Longview Terrace, an Addition to Wichita, Kansas, Sedgwick County, Kansas,
and except that portion platted as Brown - Jennings Replat, an Addition
to Wichita, Kansas, Sedgwick County, Kansas, and except that part
dedicated for street purposes in Book Misc. 342, Page 576, together with
that portion of vacated Bluff Street and Lincoln Street adjoining subject
property evidenced by the Vacation Order filed on DOC.#/FLM-PG:
28952460, TOGETHER with a tract of land described as follows:
Commencing 285 feet East of the Northwest corner of the Northeast
Quarter of the Southwest Quarter of Section 26, Township 27 South,
Range 1 East of the 6th P.M., Sedgwick County, Kansas; thence South
662 feet; thence East 1040 feet; thence North 662 feet; thence West
1040 feet to the place of beginning; except that part platted as Sisters
of St. Joseph Second Addition to Wichita, Sedgwick County, Kansas; and
except that part platted as Sisters of St. Joseph Fourth Addition to
Wichita, Sedgwick County, Kansas; and except that part platted as Sisters
of St. Joseph 6th Addition, Wichita, Sedgwick County, Kansas, together
with that portion of vacated Bluff Street and Lincoln Street adjoining
subject property evidenced by the Vacation Order filed on DOC.#/FLM-PG:
28952460, TOGETHER with Lot 1, Block 1, Sisters of St. Joseph Second
Addition to Wichita, Sedgwick County, Kansas, except the west 195.95 feet
of the south 320.0 feet thereof, TOGETHER with the west 195.95 feet of
the south 320.0 feet of Lot 1, Block 1, Sisters of St. Joseph Second
Addition to Wichita, Sedgwick County, Kansas, TOGETHER with Lot 1, Block
A, Sisters of St. Joseph Fourth Addition to Wichita, Sedgwick County,
Kansas; except the south 320 feet thereof, TOGETHER with the south 320
feet of Lot 1, Block A, Sisters of St. Joseph Fourth Addition to Wichita,
Sedgwick County, Kansas, TOGETHER with all of Lot 1, Block A and
Reserve A, Sisters of St. Joseph 5th Addition, Wichita, Sedgwick County,
Kansas, TOGETHER with all of Lots 1 and 2, Block A, Sisters of St. Joseph
6th Addition, Wichita, Sedgwick County, Kansas, TOGETHER with a tract of
land described as follows: The Southeast Quarter of the Northeast
Quarter of the Southwest Quarter of Section 26, Township 27 South,
Range 1 East of the Sixth Principal Meridian, Sedgwick County, Kansas,
except the West 30 feet thereof and except the South 30 feet thereof
dedicated for street; and except that part platted as Sisters of St.
Joseph 5th Addition, Wichita, Sedgwick County, Kansas, and TOGETHER with
a tract of land in the Southeast Quarter of Section 26, Township 27
South, Range 1 East of the Sixth Principal Meridian, Sedgwick County,
Kansas, more particularly described as follows: That part of vacated odd
Lots 1 through 47, inclusive, on vacated Fees Avenue, together with those
parts of said vacated Fees Avenue, vacated Henry Street, and vacated
Lincoln Street, all in vacated Duffs Subdivision of Lot 4 in Duffs
Subdivision of the Southeast Quarter of Section 26, Township 27 South,
Range 1 East lying west of and abutting a line 160.00 feet normally
distant east of and parallel with the west line of the Southeast Quarter
of said Section 26; TOGETHER with that portion of vacated Bluff Street
and Lincoln Street adjoining subject property evidenced by the Vacation
Order filed on DOC.#/FLM-PG: 28952460.

Existing public easements, building setbacks,
access controls, and dedications, if any, being
vacated by virtue of K.S.A. 12-512b, as amended.

All being situated in the Southeast Quarter,
Southwest Quarter, and Northwest Quarter of
Section 26, Township 27 South, Range 1 East of the
Sixth Principal Meridian, Sedgwick County, Kansas.

Baughman Company, P.A.



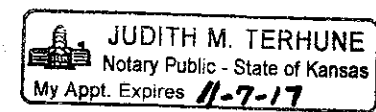
Michael G. Conrey, Surveyor
Michael G. Conrey

Know all men by these presents that we,
the undersigned, have caused the land in the surveyors certificate to be
platted into a Lot, a Block, a Reserve and a Street, to be known as
"SISTERS OF ST. JOSEPH 7TH ADDITION", Wichita, Sedgwick County, Kansas.
The utility easements are hereby granted as indicated for the construction
and maintenance of all public utilities. The drainage and utility easements
are hereby granted as indicated for drainage purposes and for the
construction and maintenance of all public utilities. The drainage
easements are hereby granted as indicated for drainage purposes. The
street is hereby dedicated to and for the use of the public. Reserve "A"
is hereby reserved for landscaping, sidewalks, open space, lakes, drives,
drainage purposes and utilities as confined to easements. Reserve "A"
shall be owned and maintained by the owner of Lot 1, Block A. Access
controls shall be as depicted on the face of the plat and are hereby
granted to the City of Wichita, Kansas. The permitted opening locations
shall be as determined by the City Engineer of the City of Wichita, Kansas.

The Sisters of St. Joseph of Wichita, Kansas,
a Kansas not-for-profit corporation

Sister Margaret Nugent, Assistant
Sister Margaret Nugent, Secretary

State of Kansas) SS The foregoing instrument acknowledged before
Sedgwick County) me, this 28th day of July, 2016, by Sister Margaret Nugent,
Assistant Secretary of the The Sisters of St. Joseph of Wichita, Kansas, a
Kansas not-for-profit corporation, on behalf of the corporation.



My App't. Exp. 11-7-17

Judith M. Terhune, Notary Public
JUDITH M. TERHUNE

This plat of "SISTERS OF ST. JOSEPH 7TH
ADDITION", Wichita, Sedgwick County, Kansas has been submitted to and
approved by the Wichita-Sedgwick County Metropolitan Area Planning
Commission, Wichita, Kansas.

Dated this _____ day of _____, 2015.
Wichita-Sedgwick County Metropolitan Area Planning Commission

_____, Chair
Carol Chapman Neugent

_____, Secretary
Dale Miller

This plat approved and all dedications
shown hereon accepted by the City Council of the City of Wichita,
Kansas, this _____ day of _____, 2016.

_____, Mayor
Jeff Longwell

_____, City Clerk
Karen Sublett

Reviewed in accordance with K.S.A. 58-2005
on this _____ day of _____, 2016.

Tricia L. Robello, L.S. #1246
Deputy County Surveyor
Sedgwick County, Kansas

Entered on transfer record this _____ day
of _____, 2016.

_____, County Clerk
Kelly B. Arnold

State of Kansas) SS This is to certify that this plat has been
Sedgwick County) filed for record in the office of the Register of Deeds, this _____ day
of _____, 2016 at _____ o'clock _____ M.; and is duly recorded.

_____, Register of Deeds
Tonya Buckingham

_____, Deputy
Judy J. Paget