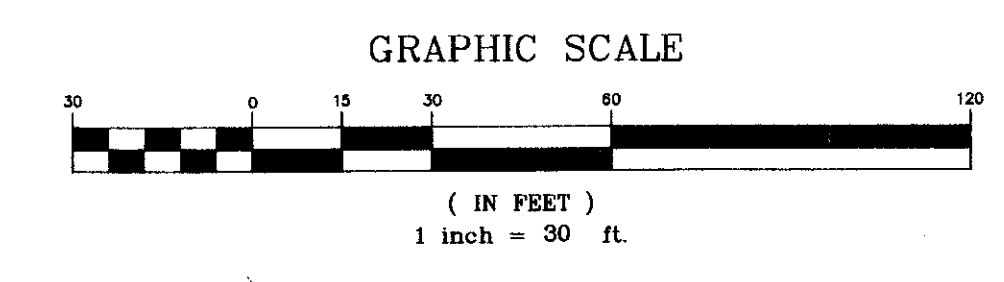
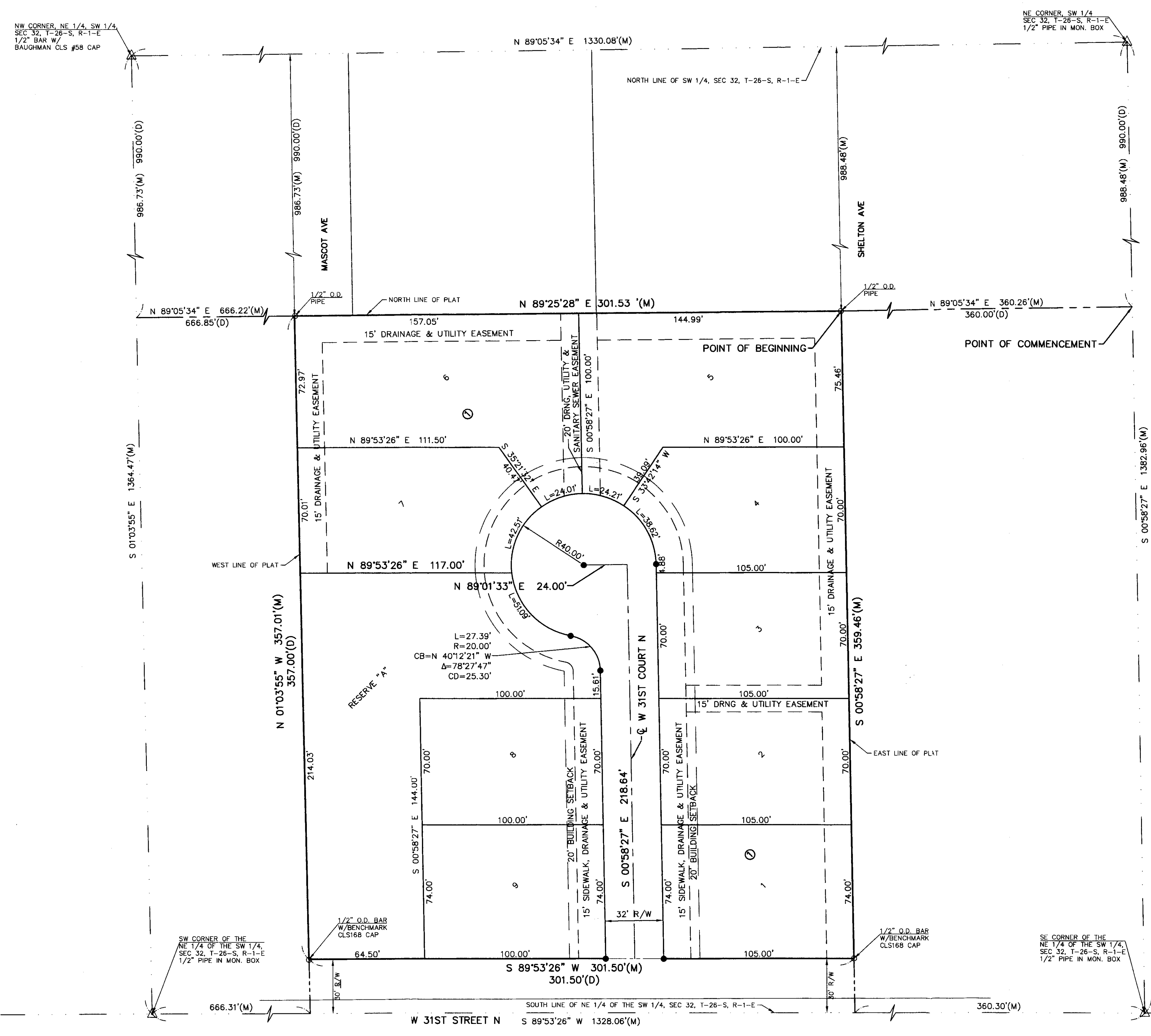


FINAL PLAT OF HOGAN-CHISM ADDITION

WICHITA, SEDGWICK COUNTY, KANSAS
A PORTION OF THE NE 1/4 OF THE SW 1/4, SEC 32, T-26-S, R-1-E,
WICHITA, SEDGWICK COUNTY, KANSAS



- LEGEND**
- △ SECTION CORNER, ORIGIN UNKNOWN UNLESS OTHERWISE NOTED
 - 1/2" REBAR W/KVE CLS #20 CAP SET
 - MONUMENT FOUND, ORIGIN UNKNOWN UNLESS OTHERWISE NOTED
 - (D) DESCRIBED
 - (M) MEASURED
 - LINE NOT DRAWN TO SCALE

OWNER'S CERTIFICATE

STATE OF KANSAS, SEDGWICK COUNTY

KNOW ALL MEN BY THESE PRESENTS THAT WE, THE UNDERSIGNED, HAVE CAUSED THE LAND DESCRIBED IN THE SURVEYOR'S CERTIFICATE TO BE PLATTED INTO LOTS, A BLOCK, A RESERVE AND STREET TO BE KNOWN AS "HOGAN-CHISM ADDITION", WICHITA, SEDGWICK COUNTY, KANSAS. RESERVE "A" IS HEREBY RESERVED FOR OPEN SPACE AND PLAYGROUND, DRAINAGE PURPOSES AND FOR THE CONSTRUCTION AND MAINTENANCE OF ALL PUBLIC UTILITIES CONFINED TO EASEMENTS. NO SIGNS, LIGHT POLES, PUBLIC DRAINAGE SYSTEMS, MASONRY TRASH ENCLOSURES OR OTHER STRUCTURES SHALL BE LOCATED WITHIN PUBLIC UTILITY EASEMENTS. THE STREET IS HEREBY DEDICATED TO AND FOR THE USE OF THE PUBLIC. THE SIDEWALK, DRAINAGE AND UTILITY EASEMENTS ARE HEREBY GRANTED AS INDICATED FOR SIDEWALK AND DRAINAGE PURPOSES AND FOR THE CONSTRUCTION AND MAINTENANCE OF ALL PUBLIC UTILITIES. THE DRAINAGE, UTILITY AND SANITARY SEWER EASEMENTS ARE HEREBY GRANTED FOR THE CONSTRUCTION AND MAINTENANCE OF DRAINAGE, UTILITY AND SANITARY SEWER LINES. A DRAINAGE PLAN HAS BEEN DEVELOPED FOR THIS PLAT AND ALL DRAINAGE EASEMENTS, RIGHTS-OF-WAY, OR RESERVES SHALL REMAIN AT ESTABLISHED GRADES, OR AS MODIFIED WITH THE APPROVAL OF THE CITY ENGINEER AND UNOBSTRUCTED TO ALLOW FOR THE CONVEYANCE OF STORMWATER. THE MINIMUM PAD ELEVATIONS FOR LOWEST OPENINGS ARE AS SHOWN ON THE FACE OF THE PLAT.

NOTARY CERTIFICATE

STATE OF KANSAS, COUNTY OF SEDGWICK | SS

THE FOREGOING INSTRUMENT ACKNOWLEDGED BEFORE ME, THIS 24th DAY OF June 2016, BY CHRISTOPHER J. LEE, MANAGING MEMBER OF PBP REAL ESTATE, LLC, A KANSAS LIMITED LIABILITY COMPANY, ON BEHALF OF THE COMPANY.

Christopher J. Lee
CHRISTOPHER J. LEE, MANAGING MEMBER

NOTARY PUBLIC

TRACY H. ALSTON
Notary Public
State of Kansas
My Comm. Expires 2-16-2018

LAND SURVEYOR'S CERTIFICATE AND DESCRIPTION

A TRACT IN THE SOUTHWEST QUARTER OF SECTION 32, TOWNSHIP 26 SOUTH, RANGE 1 EAST OF THE 6TH P.M., SEDGWICK COUNTY, KANSAS DESCRIBED AS COMMENCING AT A POINT ON THE EAST LINE OF SAID SOUTHWEST QUARTER; SAID POINT BEING 990 FEET SOUTH OF THE NORTHEAST CORNER OF SAID SOUTHWEST QUARTER; THENCE WEST PARALLEL WITH THE NORTH LINE OF SAID SOUTHWEST QUARTER, 360 FEET FOR A POINT OF BEGINNING; THENCE SOUTH PARALLEL WITH THE EAST LINE OF SAID SOUTHWEST QUARTER TO A POINT 1320 FEET NORTH OF THE SOUTH LINE OF SAID SOUTHWEST QUARTER; THENCE WEST, 301.50 FEET, THENCE NORTH 387 FEET MORE OR LESS TO A POINT 990 FEET SOUTH AND 666.05 FEET EAST OF THE NORTHWEST CORNER OF THE NORTHEAST QUARTER OF SAID SOUTHWEST QUARTER; THENCE EAST TO THE POINT OF BEGINNING.

SAID TRACT CONTAINS: 108,097 SQUARE FEET OR 2.48 ACRES OF LAND, MORE OR LESS.

LOWEST OPENING ELEVATION FOR ALL LOTS WITHIN SAID HOGAN-CHISM ADDITION SHALL BE 1321.50 (NAVD88 DATUM)

TRANSFER RECORD

ENTERED ON TRANSFER RECORD THIS _____ DAY OF _____, 2016

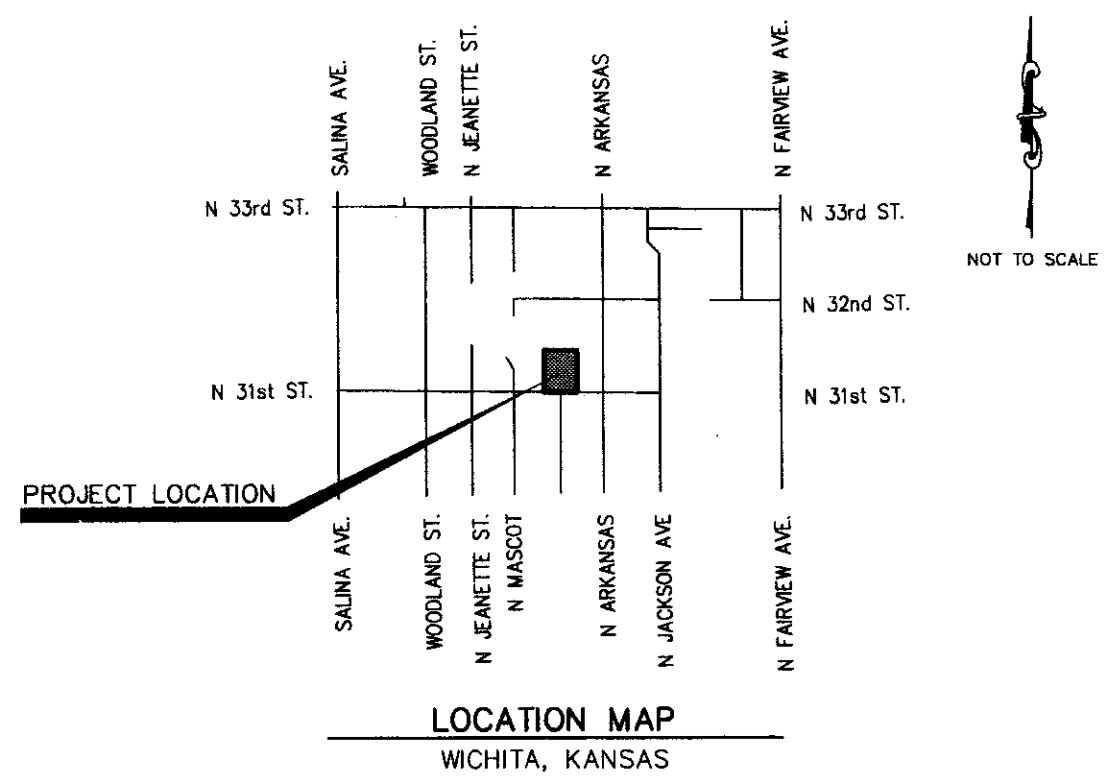
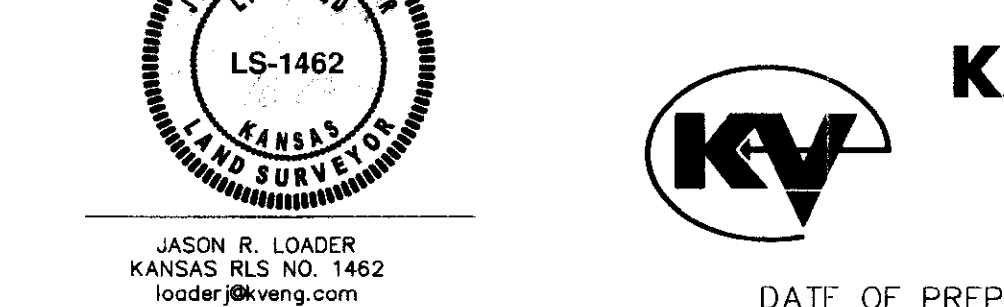
DEPUTY COUNTY SURVEYOR
TRIGIA L. ROBELLO, LS #1246

COUNTY CLERK
KELLY B. ARNOLD

BASIS OF BEARINGS:
N 89°05'34" E ALONG THE NORTH LINE OF THE SW 1/4, SEC 32, T-26-S, R-1-E, KANSAS COORDINATE SYSTEM OF 1983 SOUTH ZONE GRID BEARING.

BENCHMARKS:
BM#1: CHISELED SQUARE SET IN WEST END-RADIUS OF CURB IN SOUTHWEST QUADRANT OF WEST 31ST STREET NORTH & NORTH SHELTON AVE. ELEV=1321.32
BM#2: CHISELED SQUARE SET IN EAST END-RADIUS OF CURB IN SE QUADRANT OF WEST 31ST STREET NORTH & NORTH MASCOOT. ELEV=1318.78

DATE OF SURVEY: AUG. 13, 2015



PLANNING COMMISSION CERTIFICATE

STATE OF KANSAS, SEDGWICK COUNTY | SS

THIS PLAT OF "HOGAN-CHISM ADDITION", WICHITA, SEDGWICK COUNTY, KANSAS, HAS BEEN SUBMITTED TO AND APPROVED BY THE WICHITA-SEDGWICK COUNTY METROPOLITAN AREA PLANNING COMMISSION, WICHITA, SEDGWICK COUNTY, KANSAS, DATED THIS _____ DAY OF _____, 2016.

WICHITA-SEDGWICK COUNTY METROPOLITAN AREA PLANNING COMMISSION

_____, CHAIR
CAROL CHAPMAN NUEGENT

ATTEST:
_____, SECRETARY
DALE MILLER

GOVERNING BODY CERTIFICATE

STATE OF KANSAS, SEDGWICK COUNTY | SS

THIS PLAT APPROVED AND ALL DEDICATIONS SHOWN HEREON, ACCEPTED BY THE CITY COUNCIL OF THE CITY OF WICHITA, KANSAS, THIS _____ DAY OF _____, 2016.

_____, MAYOR
JEFF LONGWELL

ATTEST:
_____, CITY CLERK
KAREN SUBLETT

REGISTER OF DEEDS CERTIFICATE

STATE OF KANSAS, COUNTY OF SEDGWICK | SS

THIS IS TO CERTIFY THAT THIS INSTRUMENT WAS FILED FOR RECORD IN THE REGISTER OF DEEDS OFFICE AT _____ O'CLOCK _____ M., ON THE _____ DAY OF _____, 2016

_____, REGISTER OF DEEDS
TANYA BUCKINGHAM

_____, DEPUTY
JUDY J. PAGET

DEPUTY COUNTY SURVEYOR CERTIFICATE

REVIEWED IN ACCORDANCE WITH K.S.A. 58-2005 ON THIS _____ DAY OF _____, 2016.

DEPUTY COUNTY SURVEYOR
TRIGIA L. ROBELLO, LS #1246

COUNTY CLERK
KELLY B. ARNOLD

BASIS OF BEARINGS:
N 89°05'34" E ALONG THE NORTH LINE OF THE SW 1/4, SEC 32, T-26-S, R-1-E, KANSAS COORDINATE SYSTEM OF 1983 SOUTH ZONE GRID BEARING.

BENCHMARKS:
BM#1: CHISELED SQUARE SET IN WEST END-RADIUS OF CURB IN SOUTHWEST QUADRANT OF WEST 31ST STREET NORTH & NORTH SHELTON AVE. ELEV=1321.32
BM#2: CHISELED SQUARE SET IN EAST END-RADIUS OF CURB IN SE QUADRANT OF WEST 31ST STREET NORTH & NORTH MASCOOT. ELEV=1318.78

KAW VALLEY ENGINEERING, INC.
200 N. EMPORIA, SUITE 100
WICHITA, KANSAS 67202
PH. (316) 440-4304 | FAX (316) 440-4309
wh@kveng.com | www.kveng.com

DATE OF PREPARATION: APRIL 21, 2016 PROJECT NO. G15D0170 SHEET 1 OF 1

FINAL TRACING REC'D 8.19.16

FILE COPY
5602015-00047