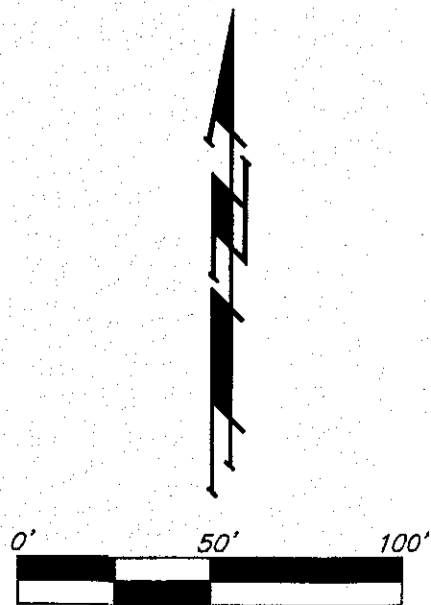
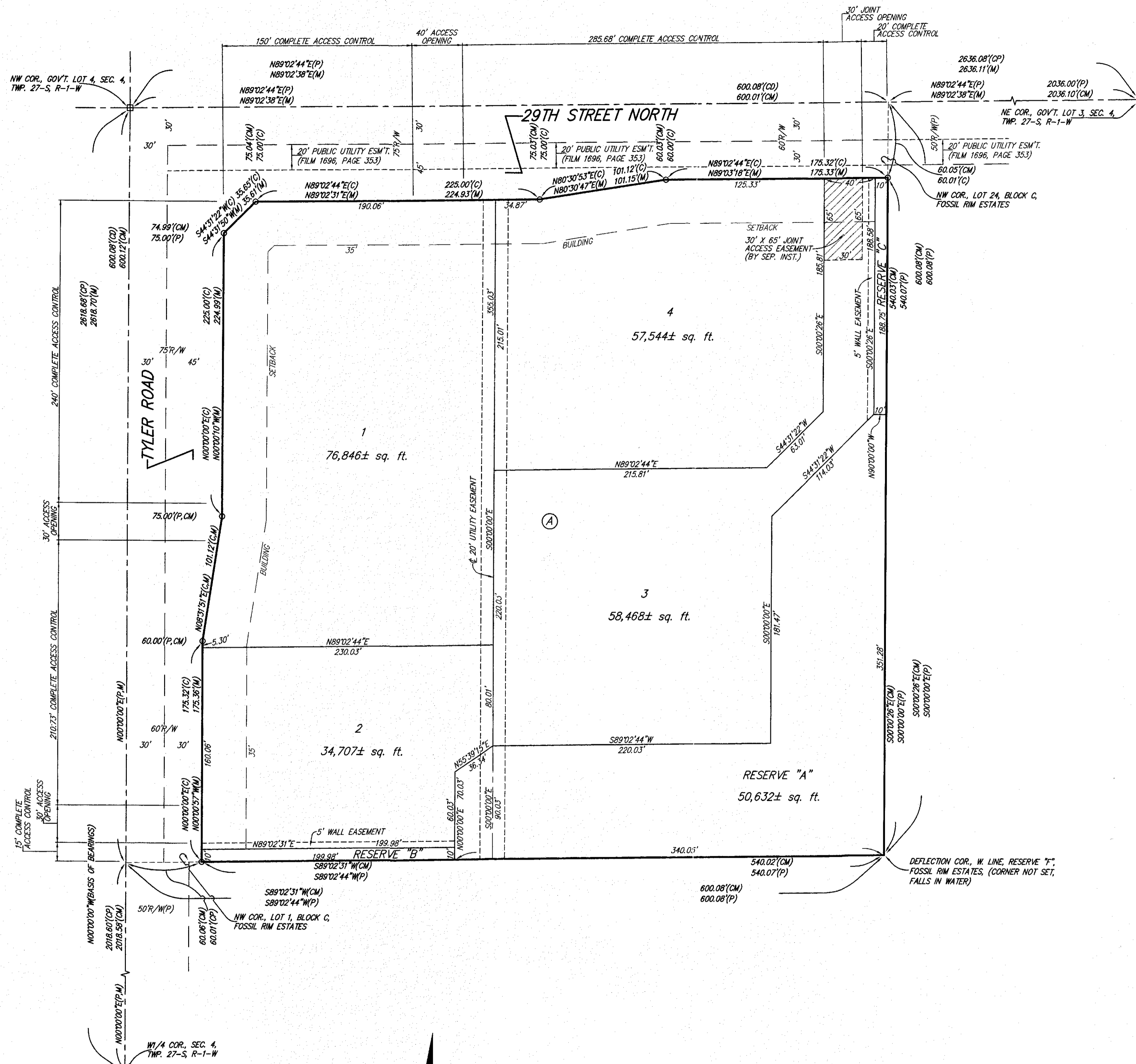


FOSSIL RIM COMMERCIAL ADDITION

WICHITA, SEDGWICK COUNTY, KANSAS



○ = #4 REBAR W/ "HELPS" CAP (FOUND)
 □ = 1/2" IRON PIPE IN T-HANDLE (FOUND)

(M) = MEASURED
 (P) = PLATTED
 (C) = CALCULATED
 (CM) = CALCULATED PER MEASURED INFO.
 (CP) = CALCULATED PER PLATTED INFO.
 (CD) = CALCULATED PER DESCRIBED INFO.

LOT	BLOCK	ELEVATION
2, 3	A	1,368.0

BENCHMARK:
 CHISELED SQUARE, NORTH 6' OF CATCH BASIN, 39.3' N & 9.6' W OF THE MOST NORTHERLY NW COR., LOT 1, BLOCK A, FOSSIL RIM COMMERCIAL ADDITION.
 ELEV. = 1,362.99 NAVD88

CHISELED SQUARE, TOP OF CURB, 29.7' W OF THE SW COR., RESERVE "B", FOSSIL RIM COMMERCIAL ADDITION.
 ELEV. = 1,365.87 NAVD88

NOTE:
 A drainage plan has been developed for the plot and all drainage easements, rights-of-way, or reserves shall remain at established grades or as modified with the approval of the applicable City or County Engineer and unobstructed to allow for the conveyance of stormwater.

NOTE:
 ADDITIONAL BUILDING SETBACKS AND OTHER REQUIREMENTS PER COMMUNITY UNIT PLAN DP-340.

State of Kansas) SS We, Baughman Company, P.A., Surveyors in Sedgwick County and state do hereby certify that we have surveyed and platted "FOSSIL RIM COMMERCIAL ADDITION", Wichita, Sedgwick County, Kansas and that the accompanying plat is a true and correct exhibit of the property surveyed, described as the north 600.00 feet of the west 600.00 feet of Government Lot 4 in the Northwest Quarter of Section 4, Township 27 South, Range 1 West of the Sixth Principal Meridian, Sedgwick County, Kansas.

Existing public easements, access controls, building setback lines, and dedications, if any, being vacated by virtue of K.S.A. 12-512b, as amended.

All being situated in Government Lot 4 in the Northwest Quarter of Section 4, Township 27 South, Range 1 West of the Sixth Principal Meridian, Sedgwick County, Kansas.

Baughman Company, P.A.

Michael G. Conrey
 Michael G. Conrey, Surveyor

This plat of "FOSSIL RIM COMMERCIAL ADDITION, Wichita, Sedgwick County, Kansas has been submitted to and approved by the Wichita-Sedgwick County Metropolitan Area Planning Commission, Wichita, Kansas.

Dated this _____ day of _____, 2016.
 Wichita-Sedgwick County Metropolitan Area Planning Commission

_____, Chair
 Carol Chapman Neugent

_____, Secretary
 Dale Miller

This plat approved and all dedications shown hereon accepted by the City Council of the City of Wichita, Kansas, this _____ day of _____, 2016.

_____, Mayor
 Jeff Longwell

_____, City Clerk
 Karen Sublett

Know all men by these presents that we, the undersigned, have caused the land in the surveyors certificate to be platted into Lots, a Block, Reserves and Streets, to be known as "FOSSIL RIM COMMERCIAL ADDITION", Wichita, Sedgwick County, Kansas. The utility easement is hereby granted as indicated for the construction and maintenance of all public utilities. No signs, light poles, private drainage systems, masonry trash enclosures or other structures shall be located within public utility easements. The wall easements are hereby granted as indicated for the construction and maintenance of private screening walls and utility main lines and service lines shall be allowed to cross these easements. The streets are hereby dedicated to and for the use of the public. Reserve "A" is reserved for landscaping, lakes, open space, berms, sidewalks, drainage purposes and utilities as confined to easements. Reserves "B" and "C" are reserved for landscaping, open space, berms, drainage purposes and utilities. Reserves "A", "B", and "C" shall be owned and maintained by the Lot Owners association for the addition. Access controls shall be as depicted on the face of the plat and are hereby granted to the City of Wichita, Kansas. The Minimum Building Pad Elevations for the lowest opening to the structures shall be as indicated on the face of the plat.

Hawkins Marital Trust, Las Vegas, NV, under Trust Agreement dated July 14, 2008, as Amended

Craig A. Kreiser
 Craig A. Kreiser, Co-Trustee

Reviewed in accordance with K.S.A. 58-2005 on this _____ day of _____, 2016.

_____, Deputy County Surveyor
 Tricia L. Robello, L.S. #1246

Entered on transfer record this _____ day of _____, 2016.

_____, County Clerk
 Kelly B. Arnold

State of Kansas) SS The foregoing instrument acknowledged before me, this 11th day of August, 2016, by Craig A. Kreiser, Co-Trustee of the Hawkins Marital Trust, Las Vegas, NV, under Trust Agreement dated July 14, 2008, as Amended, on behalf of the trust.

KELLY A. THOMAS
 Notary Public - State of Kansas
 My Appt. Expires 4-16-20

Kelly A. Thomas
 Kelly A. Thomas, Notary Public

My App't. Exp. 4-16-20

State of Kansas) SS This is to certify that this plat has been filed for record in the office of the Register of Deeds, this _____ day of _____, 2016 at _____ o'clock _____ M; and is duly recorded.

_____, Register of Deeds
 Tonya Buckingham

_____, Deputy
 Judy J. Paget

Baughman Company, P.A.
 315 Ella St. Wichita, KS 67211 P 316-262-7271 F 316-262-0149