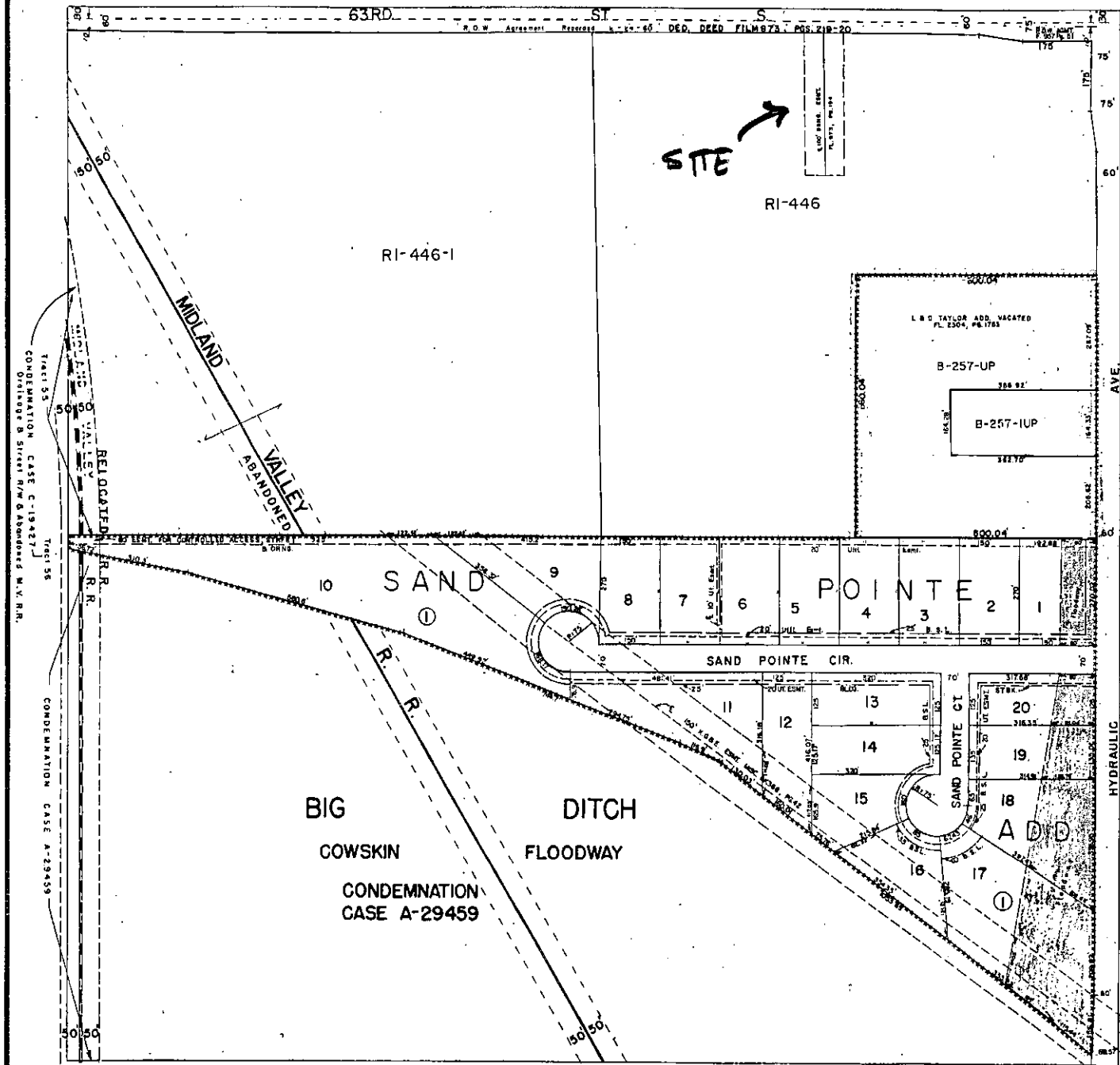


VAC 2009-02

R 1
129

N. E. 1/4 SEC. 33, TWP. 28S, R.1E



* MAP STALIS *
 DATE (922)
 Dig. Streets (922)
 Dig. Boundaries (922)
 Dig. Parcels (922)



VAC20089-02

development



	Sewer Manholes
	Sewer Observation Manholes
	Hydrant Schematic
	Water Valve Schematic
	Water Node Schematic
	City Limit Boundaries
	Property Parcels
	Lot Block
	Subdivisions
	BOCC
	Sewer Flow
	Sewer Lines
	Water Lines Schematic
Roads	
	State Highway
	US Federal Highway
	Interstate
	KTA
	Arterial
	Collector
	Minor
	Ramp
	Railroads
	Township and Range
	Section
	Quarter Section
	Waterways
	HOA
	SS_PETITIONS
	WATER_APPLI-CATIONS

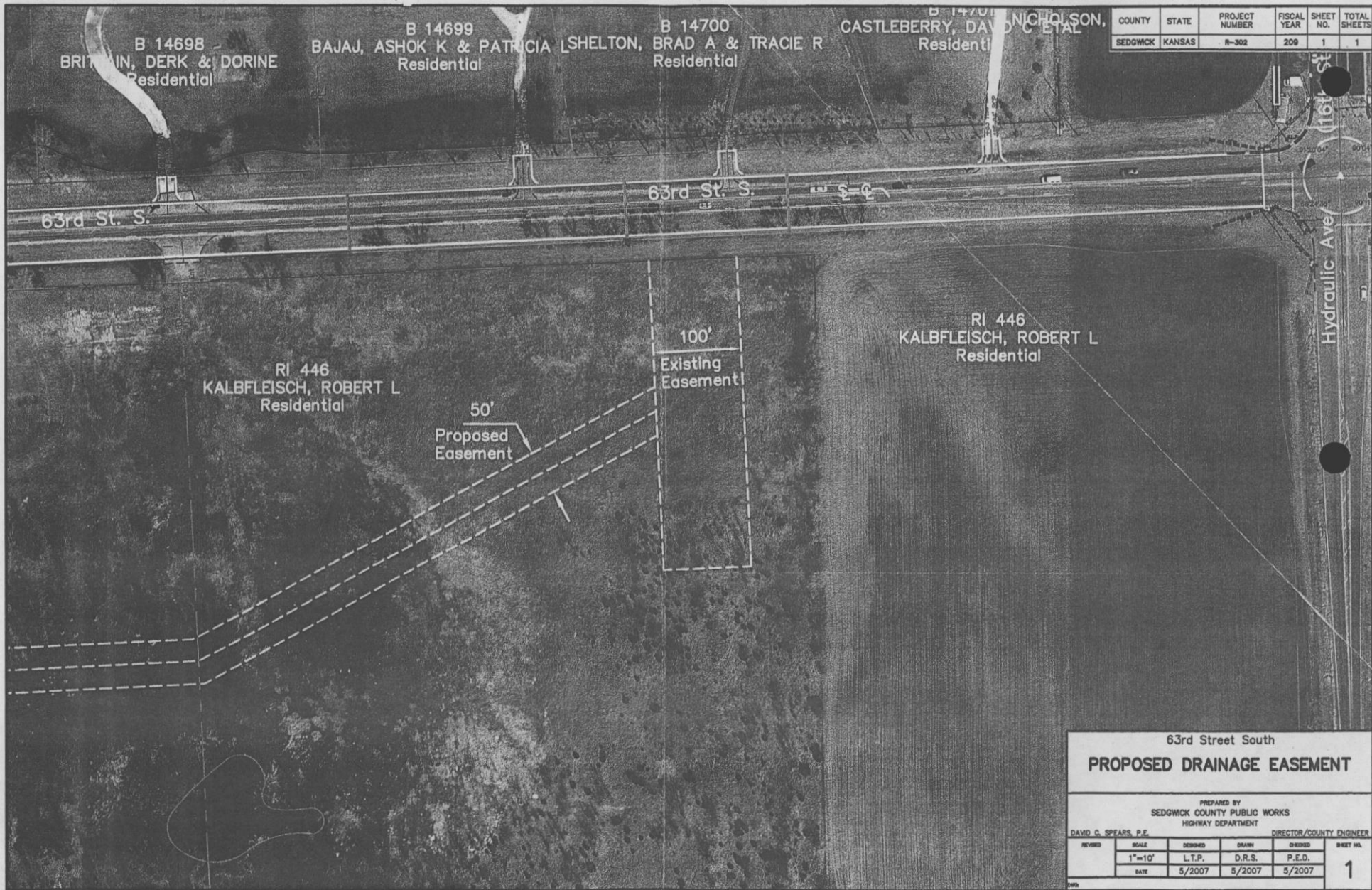
Printed: 2/19/2009 12:03:35 PM
 Powered By GeoSmart, Inc.



Every reasonable effort has been made to assure the accuracy of the maps and associated data provided herein. This information is provided with the understanding that the data are susceptible to a degree of error, and conclusions drawn from such information are the responsibility of the reader. The City of Wichita makes no warranty, representation or guaranty as to the content, accuracy, timeliness or completeness of any of the data provided herein. Some data provided here and used for the preparation of these maps has been obtained from public records not created or maintained by the City of Wichita. The City of Wichita shall assume no liability for any decisions made or actions taken or not taken by the reader in reliance upon any information or data furnished hereunder. The user should consult with the appropriate departmental staff member, e.g. Planning, Parks & Recreation, etc. to confirm the accuracy of information appearing in the visual presentations accessible through these web pages.



VAC2009-02



COUNTY	STATE	PROJECT NUMBER	FISCAL YEAR	SHEET NO.	TOTAL SHEETS
SEDGWICK	KANSAS	R-302	209	1	1

63rd Street South
PROPOSED DRAINAGE EASEMENT

PREPARED BY
SEDGWICK COUNTY PUBLIC WORKS
HIGHWAY DEPARTMENT

DAVID G. SPEARS, P.E. DIRECTOR/COUNTY ENGINEER

REVISED	SCALE	DESIGNED	DRAWN	CHECKED	SHEET NO.
	1"=10'	L.T.P.	D.R.S.	P.E.D.	1
		DATE 5/2007	5/2007	5/2007	