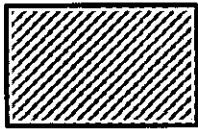
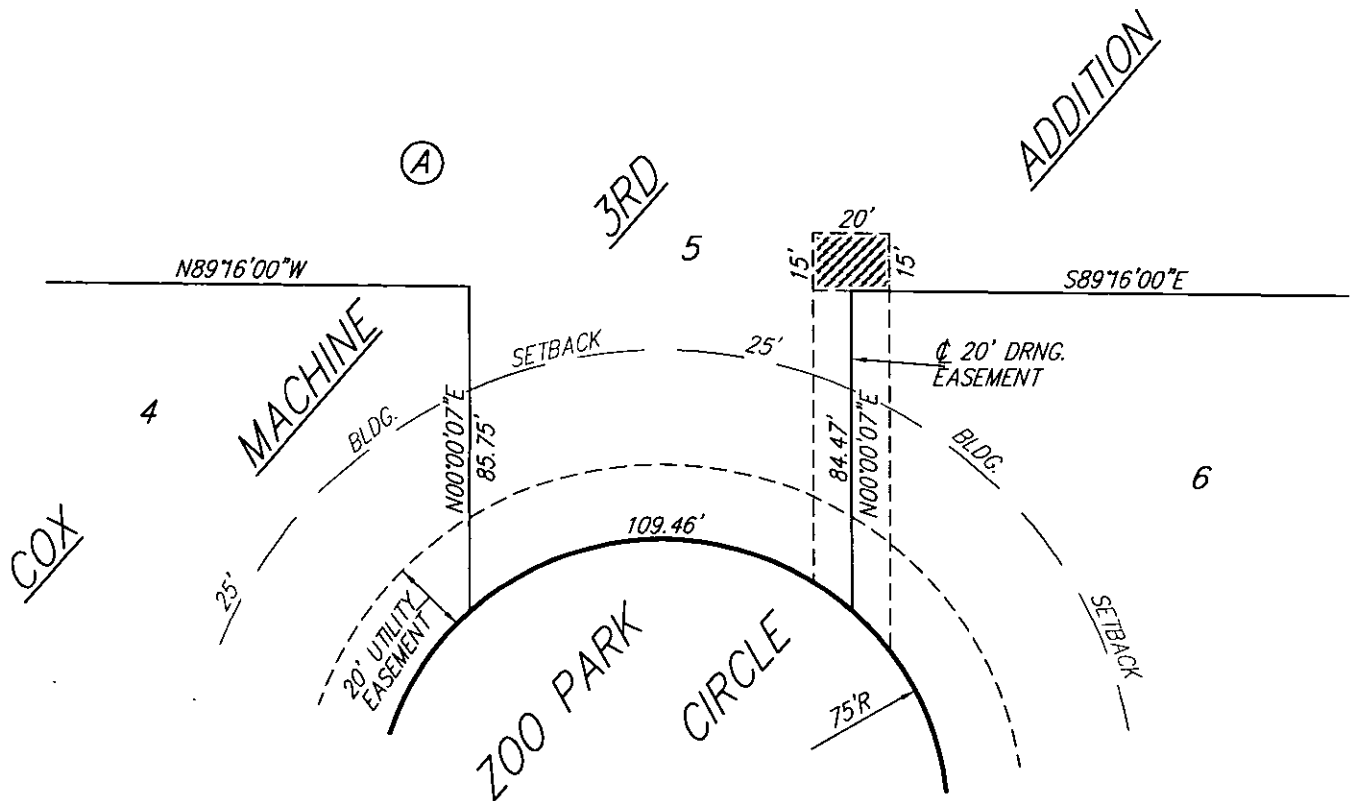


EXHIBIT

COX MACHINE 3RD ADDITION PARTIAL DRAINAGE EASEMENT VACATION



INDICATES AREA OF
LEGAL DESCRIPTION



25 JUNE 2009

B Baughman Company, P.A.
315 Ellis St. Wichita, KS 67211 P 316-262-7271 F 316-262-0149
Baughman ENGINEERING | SURVEYING | PLANNING | LANDSCAPE ARCHITECTURE

F:\PLAT\COX MACHINE 3RD ADDITION\DWG\COXMACHINE3RD-F.DWG-MCC

VAC2009-27