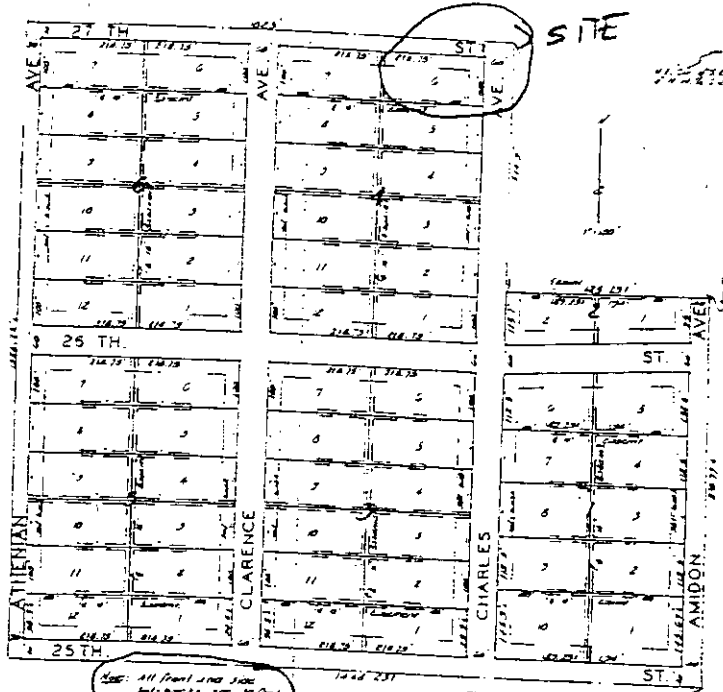


NORTHWEST GARDENS

SEDCWICK COUNTY, KANSAS.



State of Kansas } ss. I, Clyde M. Burchman, County
Sedgewick County } ss. Surveyor in and for said county, and state as here-
to certify that I have plotted NORTHWEST GARDENS
Sedgewick County, Kansas, and that the accompany-
ing plat is a true and correct exhibit of the prop-
erty surveyed described as follows: beg. 314.3
feet south of the N.E. Cor. of the S.E. 1/4 of N.W. 1/4 of
Sec. 6, Twp. 27-S., R. 1-E., thence south 810.77 feet
more or less to S.E. Cor. of said N.W. 1/4, thence
west 1448.231 feet; thence north parallel with
east line of said N.W. 1/4 1321.75 feet more or
less to north line of S.W. 1/4 of said N.W. 1/4, thence
east 1025 feet; thence south 314.3 feet; thence
east 423.231 feet to beg.

Clyde M. Burchman
County Surveyor

Know all men by these presents
that we Virginia Alexander, Josephine Alexander,
and Louise Alexander have caused the lands de-
scribed in the surveyors certificate to be platted into
lots, blocks and streets to be known as
"NORTHWEST GARDENS" Sedgewick County, Kansas,
to be known as here by granted as indicated on
the accompanying plat. The streets are here-
by dedicated to and for the use of the public.

Virginia Alexander
Josephine Alexander
Louise Alexander

State of Kansas } ss. be it remembered that on
Sedgewick County } ss. this 31st day of May 1950, before me
a notary public in and for said county and
state came Virginia Alexander, Josephine
Alexander and Louise Alexander, to me known
to be the same persons who executed the
foregoing instrument of writing and duly ac-
knowledged the execution of the same as
their voluntary act and deed. In testimony
thereof I have hereunto set my hand and
affixed my notarial seal the day and year
above written.

John J. Burchman Notary Public
My Commission Expires March 26, 1953

This plat of NORTHWEST
GARDENS has been submitted to and consider-
ed by the City Planning Commission of Wich-
ita, Kansas, and is hereby recommended to the
Board of City Commissioners, with the recom-
mendation that such plat be approved as
proposed. Dated this 27th day of May
1950.

The City Planning Commission of Wichita, Kansas.
John N. Irons
Edward M. Smith

WAVE R 4424 P 377
" 4424 P 373 + 16 sheets 4424 P 377
" 4424 P 377
" 4424 P 375
" 4424 P 376

← SET BACKS

Approved by the Board of City Commis-
sioners this 31st day of May 1950.
Earl A. Huber Mayor

Edith A. Huber City Clerk

Approved by the Board of County Comm-
issioners this 12th day of June 1950.
Edith A. Huber County Clerk

Entered on transfer this 31st day of
JUNE 1950.
10368
Edith A. Huber County Clerk

State of Kansas } ss. This is to certify that this instrument
Sedgewick County } ss. was filed for record this 12th day of June
1950 at 10:00 o'clock A. M. and is duly recorded
in the Office of the Register of Deeds.

Edith A. Huber Register of Deeds.

This digital plat record accurately reproduces in all details the original plat filed with the Sedgewick County Register of Deeds. Digitized under the supervision of Register of Deeds Bill Voss by Sedgewick County Geographic Information Systems.

Bill Voss, Register of Deeds
Sedgewick County, Kansas

NO. 4 B