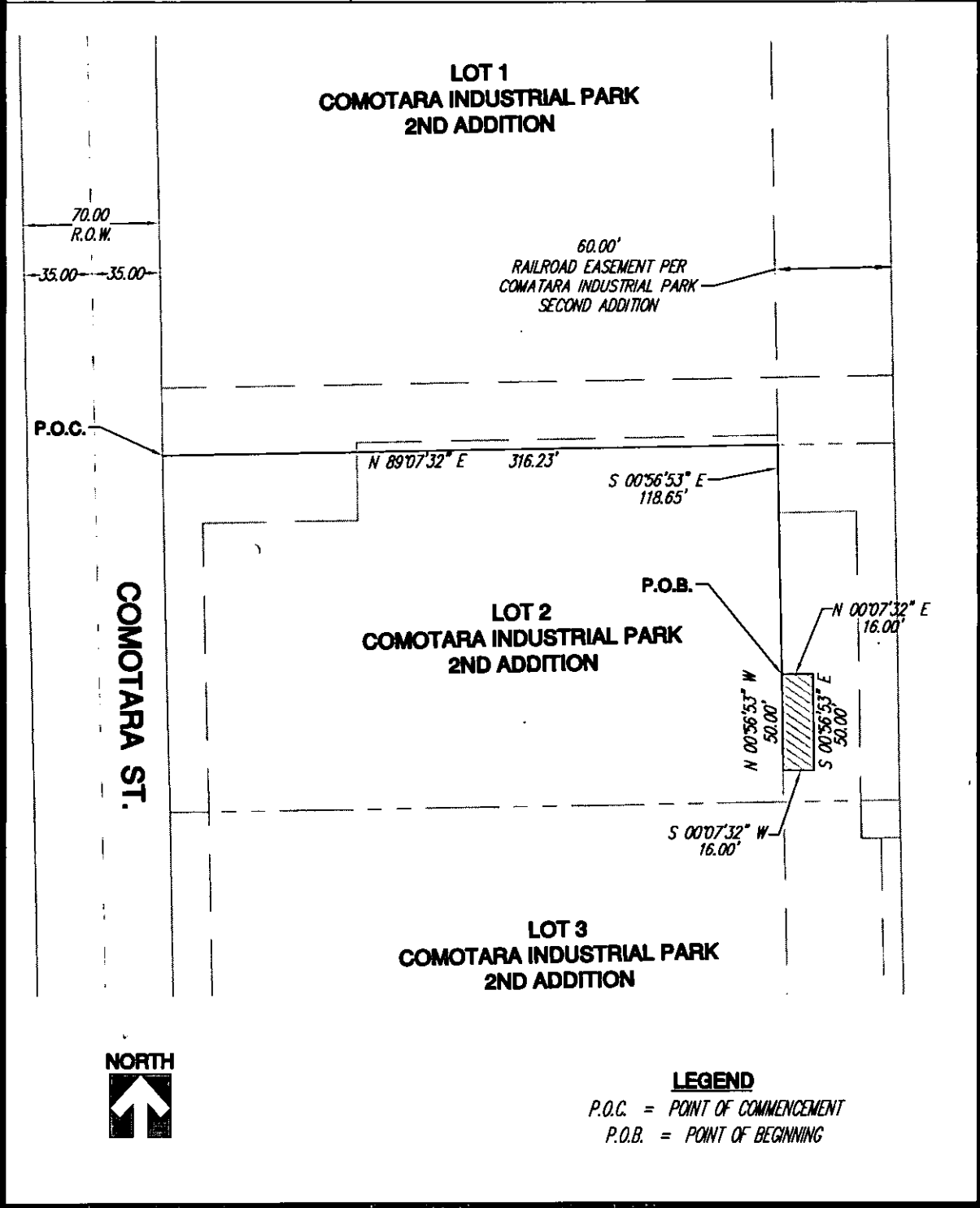
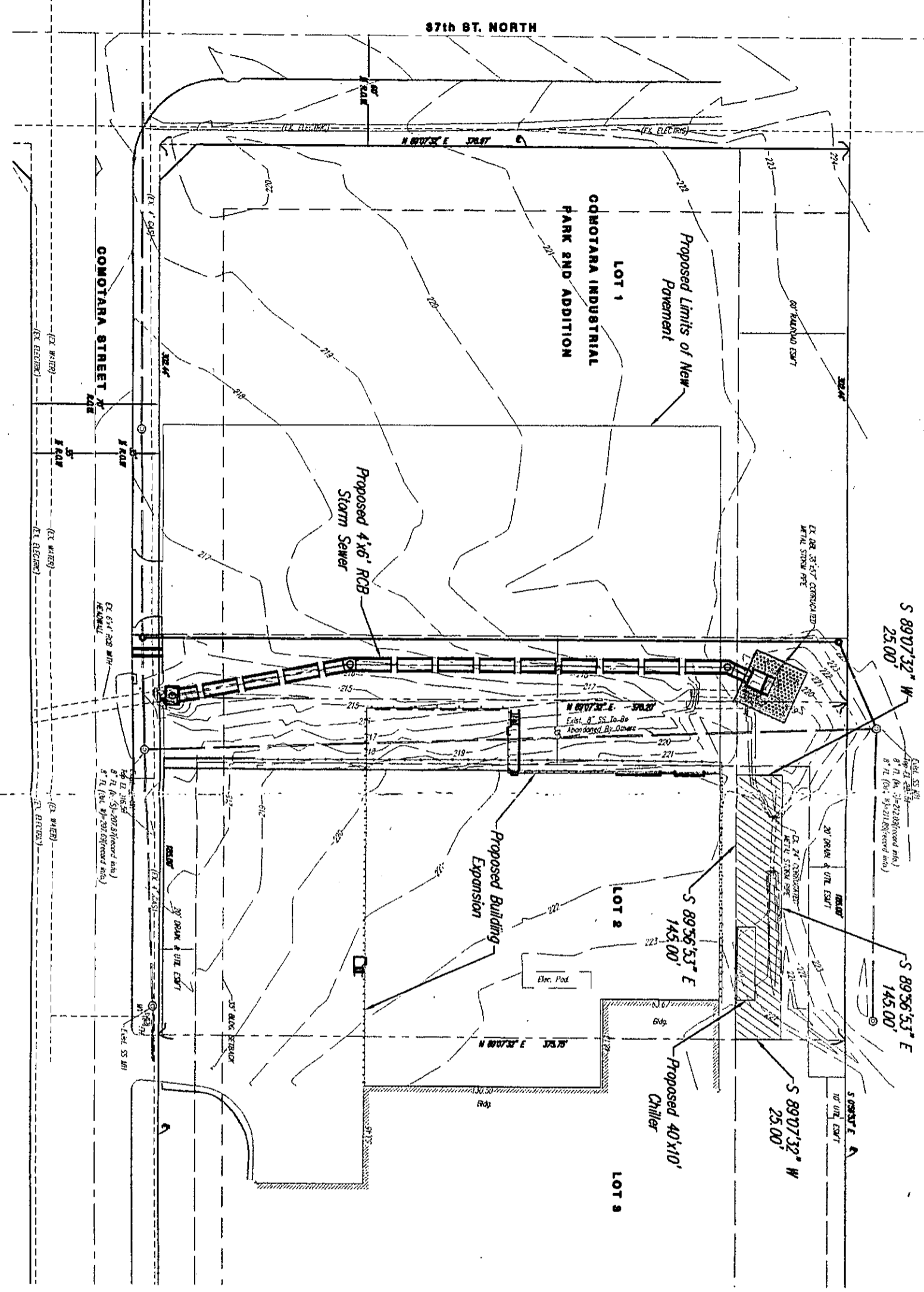
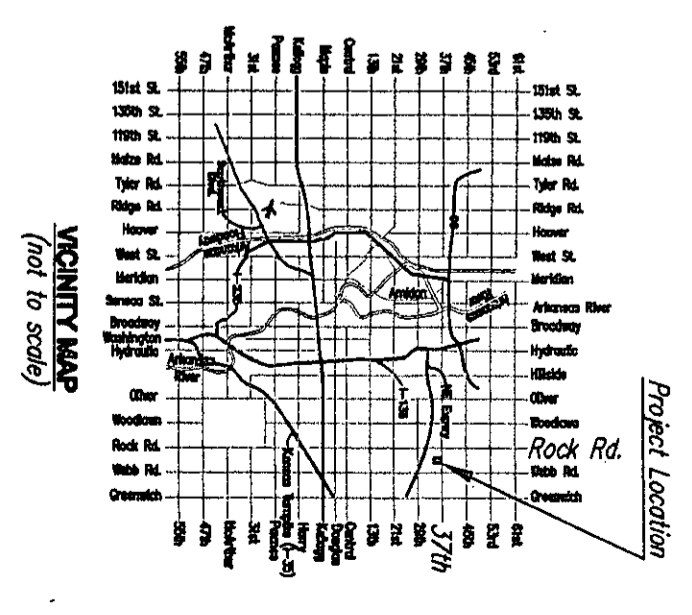
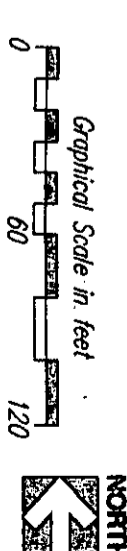


YOUNG & ASSOCIATES, P.A.
Professional Civil Engineering Consultants
100 South George, Derby, Kansas 67037
tele: (316) 786-2552, fax: (316) 786-4408, email: engineering@yngpa.com

HOUSE OF SWAN RAILROAD
Easement Vacation Exhibit

LOTS 1-5
COMOTARA INDUSTRIAL PARK 2ND ADD'N.
WICHITA, SEDGWICK COUNTY, KANSAS





LEGEND
 = Area of Proposed Vacation

Date Prepared: February 10, 2010
HOUSE OF SCWAN RAILROAD
 Easement Vacation Siteplan
LOTS 1-5
COMOTARA INDUSTRIAL PARK 2ND ADDN.
 WICHITA, SEDGWICK COUNTY, KANSAS

YOUNG & ASSOCIATES, P.A.
 Professional Civil Engineering Consultants
 100 South Georgia, Derby, Kansas 67037
 Tel: (316) 796-2200, Fax: (316) 796-4400, email: eny@youngpa.com

Sheet 1 of 1