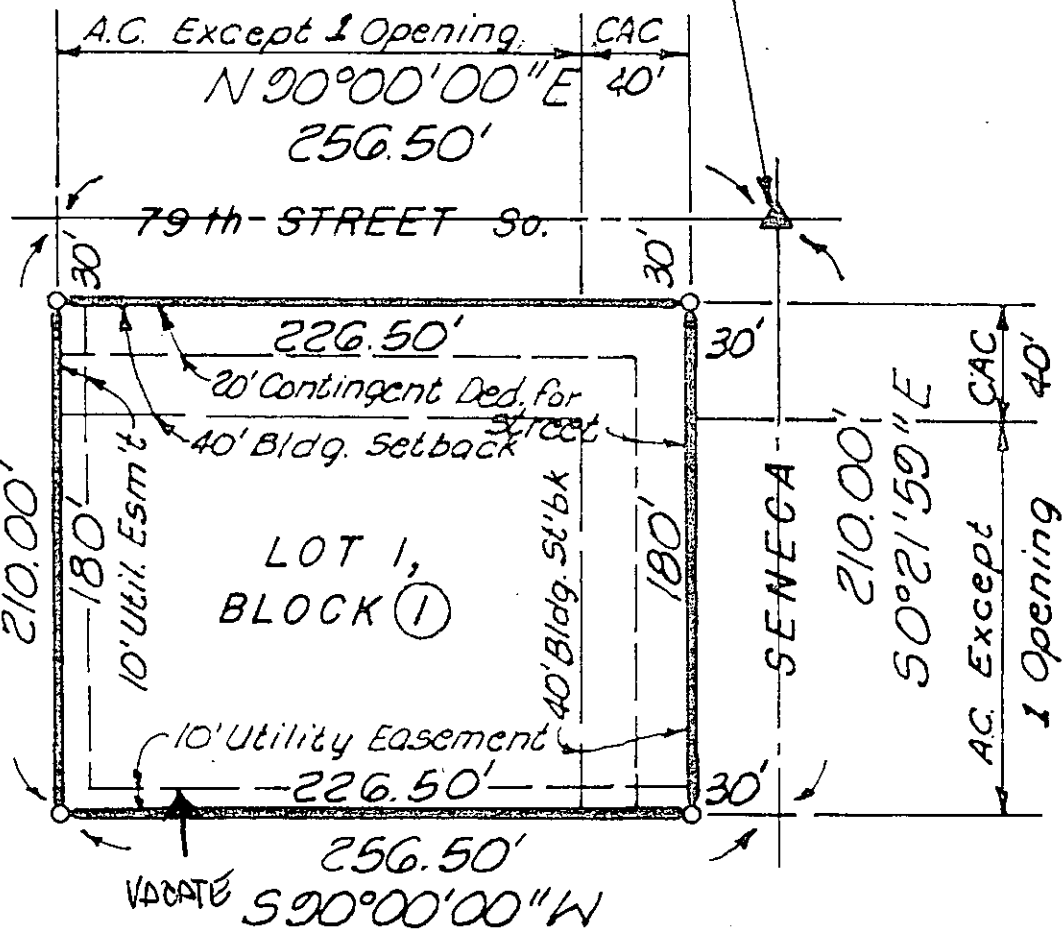




NE Corner, Section 7,  
T29 S, R1 E of the  
6th P.M.



Scale: 1" = 100'  
November 24, '81  
Bench Mark - R.R. Spike  
in P.P., 45' SE of NE  
Cor. Sec. 7, T29 S, R1 E.  
Elev. 1257.34

N 0°21'59"W

UPC 2010-10