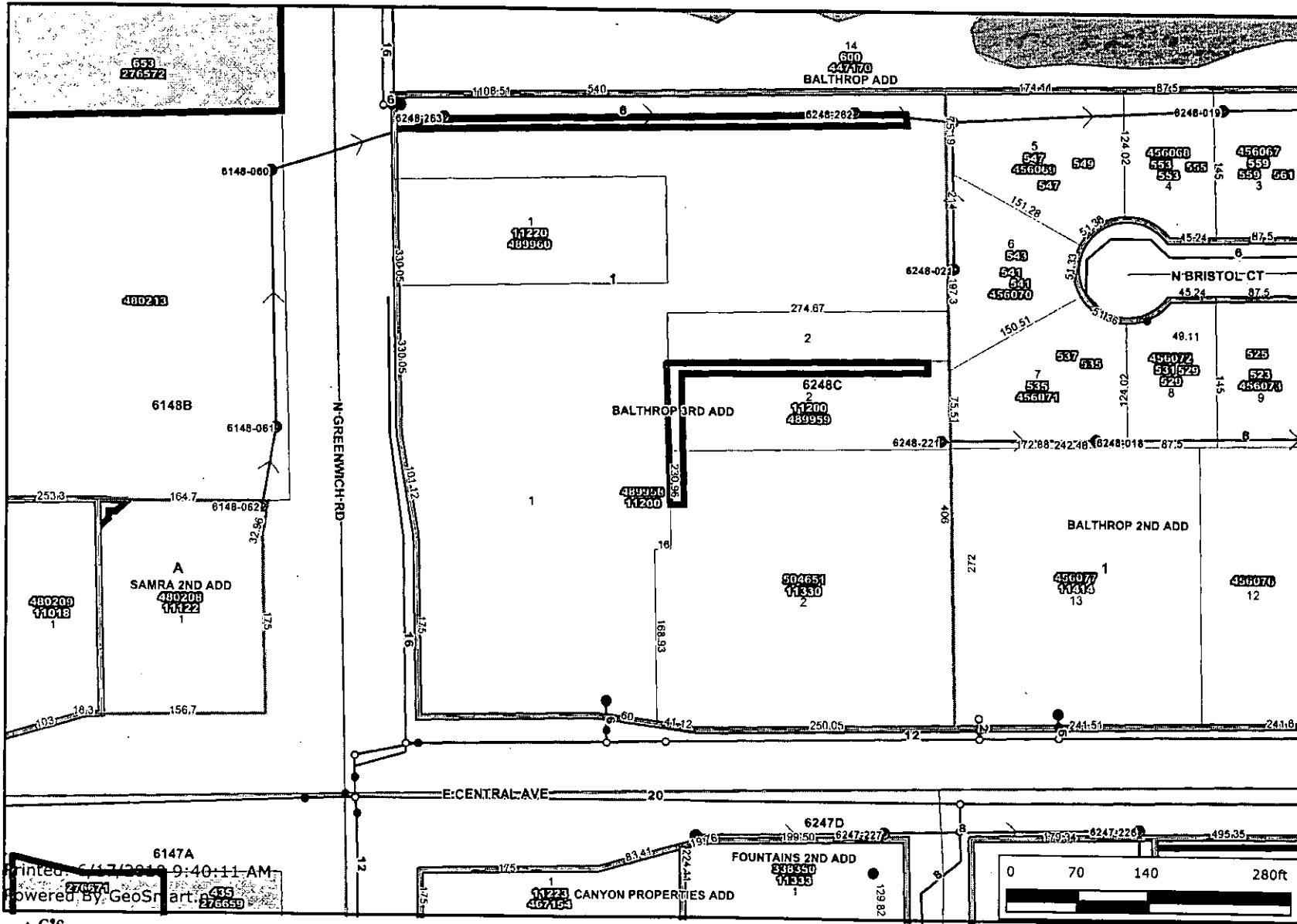




# vac2010-15

## water & sewer



- Sewer Manhole
- Sewer Observation Manhole
- Hydrant Schematic
- Water Valve Schematic
- Water Node Schematic
- Historic Districts
- Old Town Delano Overlay District
- NO
- YES
- Property Parcels
- Lot Block
- Subdivisions
- Sewer Flow
- Sewer Lines
- Water Lines Schematic
- Roads**
  - State Highway
  - US Federal Highway
  - Interstate
  - KTA
  - Arterial
  - Collector
  - Minor
  - Ramp
  - Railroads
  - Quarter Section
  - Waterways
  - Streams
  - Historic Sites
  - REGIONAL

Printed: 6/17/2010 9:40:11 AM  
 Powered By: GeoSmart



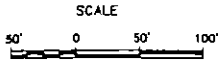
Every reasonable effort has been made to assure the accuracy of the maps and associated data provided herein. This information is provided with the understanding that the data are susceptible to a degree of error, and conclusions drawn from such information are the responsibility of the reader. The City of Wichita makes no warranty, representation or guaranty as to the content, accuracy, timeliness or completeness of any of the data provided herein. Some data provided here and used for the preparation of these maps has been obtained from public records not created or maintained by the City of Wichita. The City of Wichita shall assume no liability for any decisions made or actions taken or not taken by the reader in reliance upon any information or data furnished hereunder. The user should consult with the appropriate departmental staff member, e.g. Planning, Parks & Recreation, etc. to confirm the accuracy of information appearing in the visual presentations accessible through these web pages.



WAC 200 -15

# BALTHROP THIRD ADDITION

Wichita, Sedgwick County, Kansas



LOCATION MAP

NOTE: THIS PLAT SUBJECT TO THE CONDITIONS OF COMMUNITY UNIT PLAN, DP-232

State of Kansas } ss  
Sedgwick County } ss  
I, the undersigned licensed land surveyor in aforesaid county and state, do hereby certify that, under the supervision of the undersigned, we have surveyed and platted "BALTHROP THIRD ADDITION", Wichita, Sedgwick County, Kansas and that the accompanying plat is a true and correct exhibit of the property surveyed, described as follows:

A replat of Lots 16 and 17 and Block 5, Balthrop Addition and Lot 14, Block 1, Balthrop Second Addition to Wichita, Sedgwick County, Kansas

Existing public easements and dedications being recited by virtue of K.S.A. 12-512(b).



Know all men by these presents that we, the undersigned owners have caused the land described in the Surveyors certificate to be platted into Lots to be known as "BALTHROP THIRD ADDITION", Wichita, Sedgwick County, Kansas. The utility easements are hereby granted as indicated for the construction and maintenance of all public utilities. The screening wall easement is for the construction and maintenance of a screening wall. Utilities may cross the screening wall easement or be within the easement where said utility easements are combined. Abutter's rights of access to all streets are hereby granted to the city unless otherwise shown. A drainage plan has been developed for this plat and all drainage easements, rights-of-way, or reserves shall remain at established grades or as modified with the approval of the city engineer and shall allow for the unobstructed conveyance of storm water.

*Scott Davies* Owner  
Davies, L.L.C.  
Scott Davies, Member  
*John C. Balthrop* Owner  
John C. Balthrop, Trustee of the Cecilia Balthrop Living Trust U/A dated April 16, 1992

State of Kansas ) ss  
Sedgwick County ) ss  
The foregoing instrument was acknowledged before me, this 23<sup>rd</sup> day of September, 1998, by John C. Balthrop, Trustee of the Cecilia Balthrop Living Trust U/A dated April 16, 1992 personally known to be the same persons who executed the foregoing instrument of writing and has duly acknowledged the execution of same.

DOUGLAS KLASSEN  
NOTARY PUBLIC  
STATE OF KANSAS  
My Ass. Exp. 9-23-01

*Douglas Klassen*, Notary Public  
Douglas Klassen

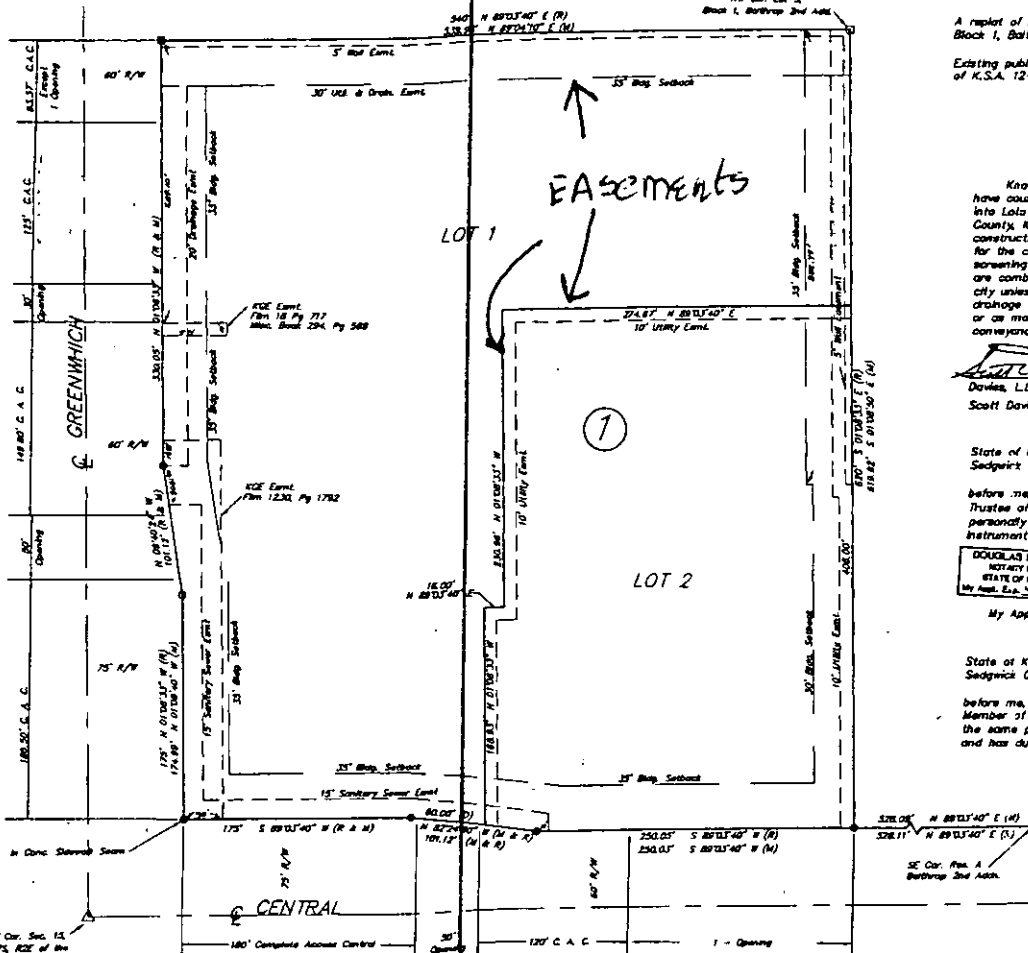
State of Kansas ) ss  
Sedgwick County ) ss  
The foregoing instrument was acknowledged before me, this 18<sup>th</sup> day of September, 1998, by Scott Davies, Member of Davies, L.L.C. personally known to be the same person who executed the foregoing instrument of writing and has duly acknowledged the execution of same.

*Douglas Klassen*, Notary Public  
Douglas Klassen

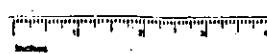
DOUGLAS KLASSEN  
NOTARY PUBLIC  
STATE OF KANSAS  
My Ass. Exp. 9-23-01

### LEGEND

- C.A.C. = Complete Access Control
  - - 1/2" Rebar Found w/ ID Cap
  - - 1/2" Rebar Set w/ 7.5" ID Cap
  - (R) - As per Record Documents
  - (M) - Measured
  - (C) - Calculated
  - - 1/2" Re
  - ⊗ - + Out e
  - - Pipe for
- Formed in accordance with  
on the 23<sup>rd</sup> day of October,  
1998 at  
Steven G. Balthrop, L.S., P.S.  
Deputy County Surveyor  
Sedgwick County, Kansas



20.00' CK



This digital plat record accurately reproduces in all details the original plat filed with the Sedgwick County Register of Deeds. Digitalized under the supervision of Register of Deeds Bill Meier by Sedgwick County Geographic Information Systems.

Bill Meier, Register of Deeds  
Official seal of digital system