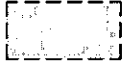
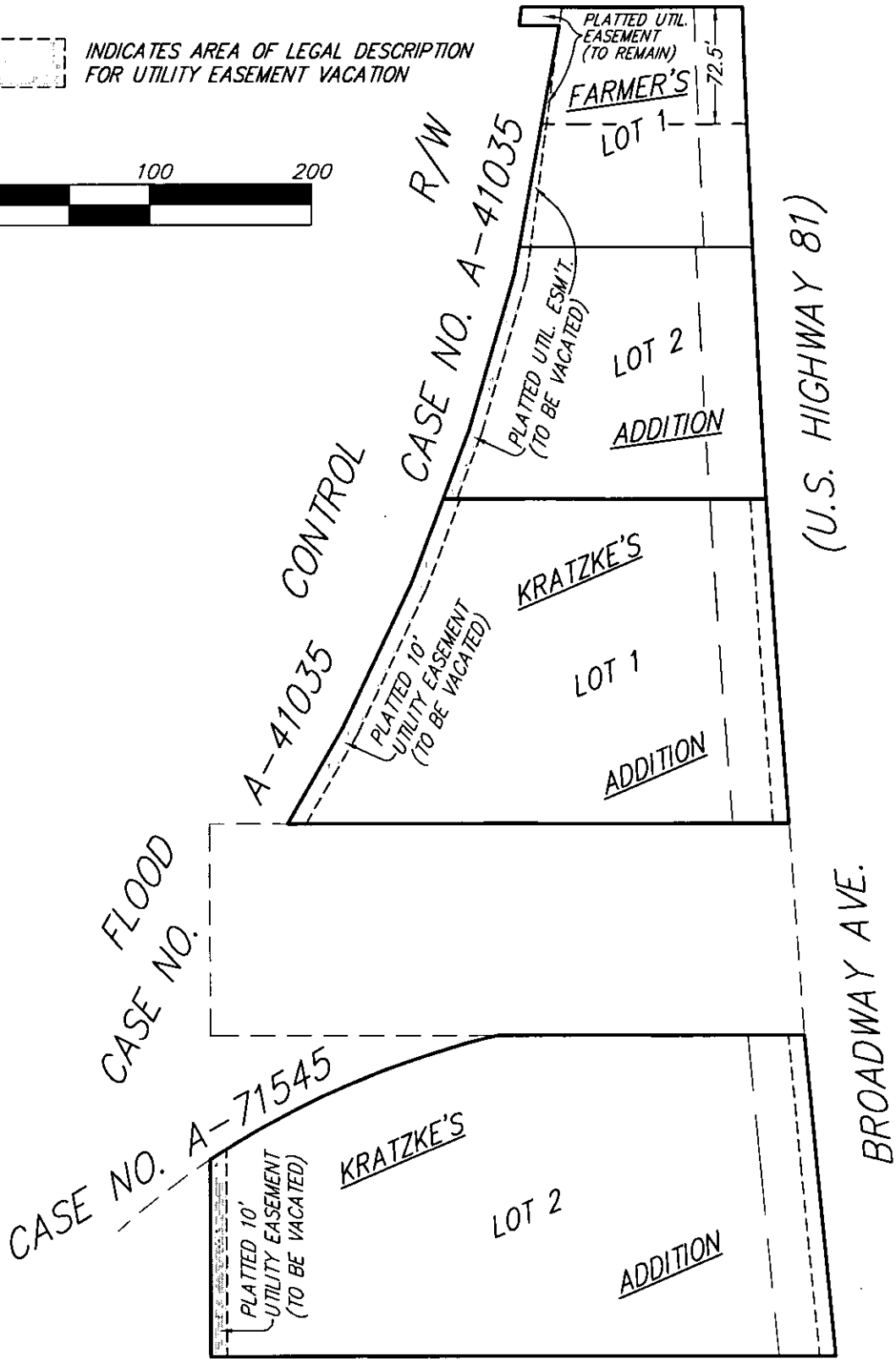


EXHIBIT



INDICATES AREA OF LEGAL DESCRIPTION FOR UTILITY EASEMENT VACATION



14 JUNE 2010

B Baughman Company, P.A.
315 Ellis St. Wichita, KS 67211 P 316-262-7271 F 316-262-0149
Baughman ENGINEERING | SURVEYING | PLANNING | LANDSCAPE ARCHITECTURE

C:\PLAT\KRATZKE-FARMER VAC.DWG-MGC

VAC 2010-14