

# STANLEY SCHOOL ADDITION

WICHITA, SEDGWICK COUNTY, KANSAS

State of Kansas, County of Sedgwick, SS.

I, Kenneth O. Taylor, Civil Engineer in said State and County, do hereby certify that I have surveyed and platted "STANLEY SCHOOL ADDITION", Wichita, Sedgwick County, Kansas and that the accompanying plat is a true and correct exhibit of said survey, part of said property being a REPLAT of Block L, Princess Addition to Wichita, Kansas, described as follows: All of Block L, Princess Addition to Wichita, Kansas. All of vacated Esthner Avenue lying east of the east line of Elizabeth Avenue and west of the west line of Martinson Avenue. Also that part of Esthner Avenue described as follows: Beginning at the SE corner of Lot 95, Block L, Princess Addition to Wichita, Kansas; thence south-easterly on a curve to the left having a radius of 60.0+ feet, a deflection angle of 89°37'44", 94.27 feet to a point 60 feet south of the south line of said Block L, extended east (The tangents of said curve being the west line of Martinson Avenue extended south and a line 60 feet south of and parallel to the south line of Block L extended east); thence west parallel to and 60 feet south of the south line of Block L extended east, 60 feet to the west line of Martinson Avenue extended south; thence north along the west line of Martinson Avenue extended south, 60 feet to the point of beginning, being vacated and replatted by virtue of K.S.A. 1970 SUPP. 13-113 (b). Also commencing at the SE corner of the N 1/2 of the NE 1/4 of Section 31, T27S, R1E of the 6th P.M., Sedgwick County, Kansas; thence west along the south line of said N 1/2 of said NE 1/4, 402.2 feet to a point of beginning; thence south 230 feet; thence west 420 feet; thence north 230 feet; thence east 420 feet to the point of beginning.

Kenneth O. Taylor, Civil Engineer  
3-10-78 Kenneth O. Taylor

Know all men by these presents that Unified School District No. 259 by Don L. Miller, President, has caused the land described in the Civil Engineer's certificate to be platted into lots and streets to be known as "STANLEY SCHOOL ADDITION", Wichita, Sedgwick County, Kansas. The streets not previously dedicated are hereby dedicated to and for the use of the public. Utility easements as indicated on the plat are hereby granted for the construction and maintenance of all public utilities. Sewer easements as indicated on the plat are hereby granted for the construction and maintenance of public sewer lines. The water line easement as indicated on the plat is hereby granted for the construction and maintenance of public water lines.

Unified School District No. 259  
a Quasi-Municipality

ATTEST: Don L. Miller, President  
Don L. Miller

Martin Martley, Clerk of the Board  
Martin Martley

State of Kansas, County of Sedgwick, SS.

The foregoing instrument was acknowledged before me this 24<sup>th</sup> day of March, 19 78 by Don L. Miller, President of Unified School District No. 259, a Quasi-Municipality, on behalf of Quasi-Municipality.

My Commission expires: 1-18-82

This plat of "STANLEY SCHOOL ADDITION", Wichita, Sedgwick County, Kansas has been submitted and approved by the Wichita-Sedgwick County Metropolitan Area Planning Commission, Wichita, Kansas.

Dated this 16<sup>th</sup> day of February, 19 78

Wichita-Sedgwick County Metropolitan Area  
Planning Commission

Margaret Taylor, Chairman  
Margaret L. Taylor  
Robert A. Lakin, Secretary  
Robert A. Lakin

This plat approved and all dedications shown hereon accepted by the Board of City Commissioners of the City of Wichita, Kansas, this 24<sup>th</sup> day of March, 19 78

Cornelia Peters, Mayor  
Cornelia A. Peters  
Donald C. Glisick, City Clerk  
Donald C. Glisick

This plat approved and all dedications shown hereon accepted by the Board of County Commissioners of Sedgwick County, Kansas, this 16<sup>th</sup> day of February, 19 78

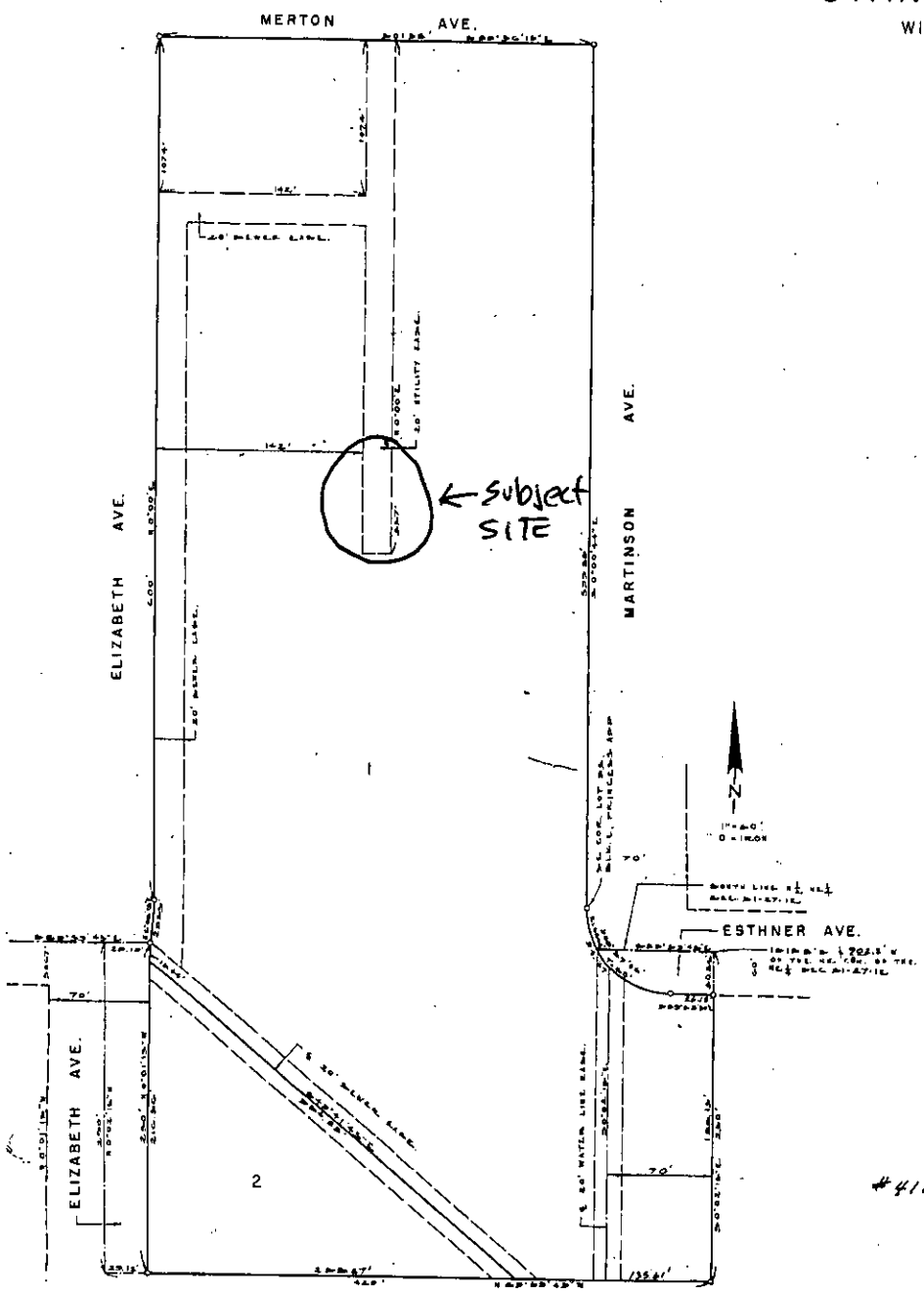
ATTEST: Dorothy M. White, County Clerk  
Dorothy M. White  
John Maize, Chairman  
John Maize  
John Maize, Commissioner  
John Maize  
John Maize, Commissioner  
John Maize

Entered on transfer record this 8 day of November, 19 78  
Dorothy M. White, County Clerk  
Dorothy M. White

State of Kansas, County of Sedgwick, SS.

This is to certify that this instrument was filed for record in the Register of Deeds Office at 12:30 o'clock P.M. on the 27<sup>th</sup> day of NOVEMBER, 19 78

Bette F. McCart, Register of Deeds  
Bette F. McCart  
Pat Kettler, Deputy  
Pat Kettler



#412792

20.00

