

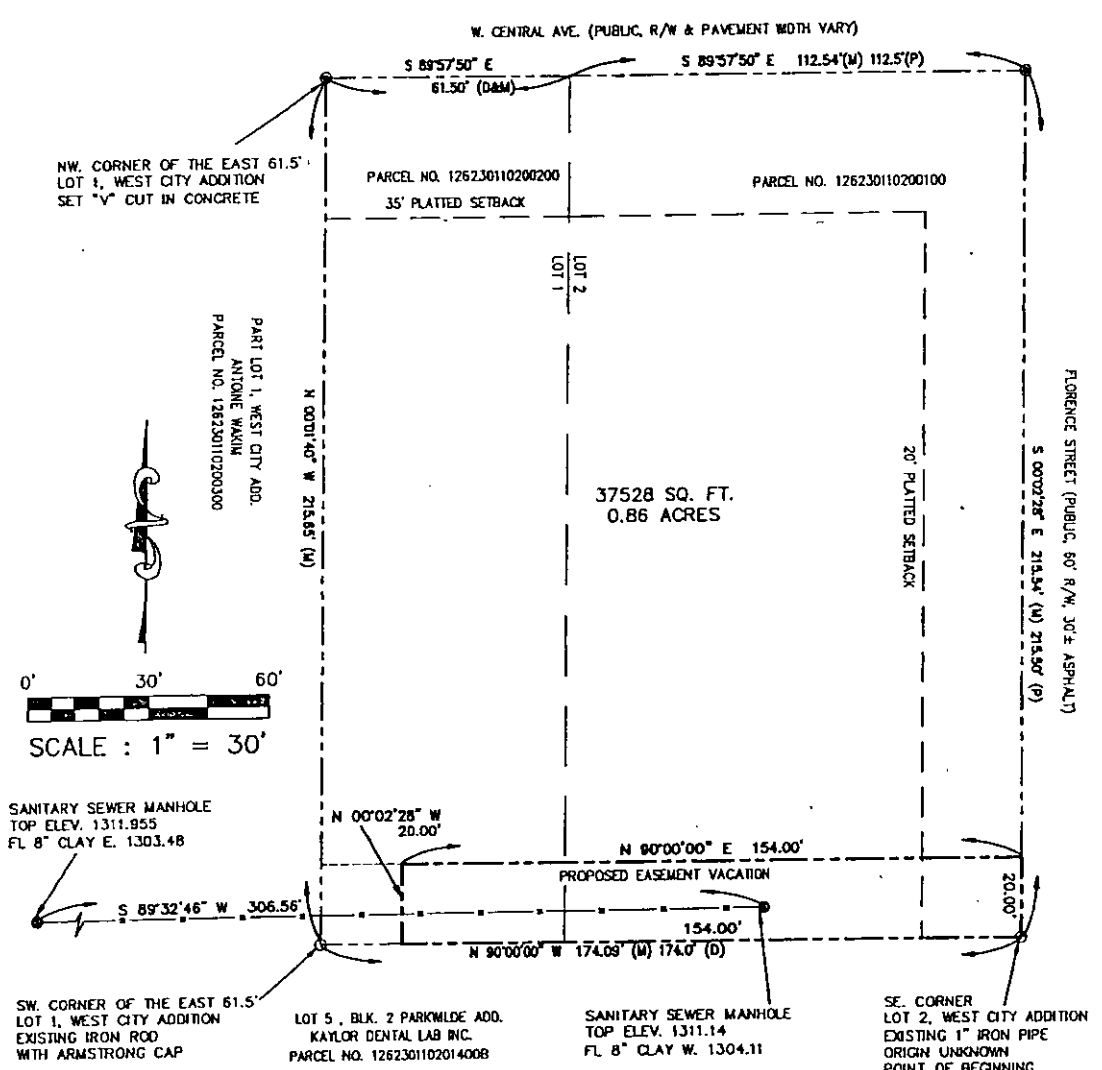
**BOUNDARY DESCRIPTION**

(Written by William A. Booe, LS 1046, 8-12-2010)

A tract of land located in a portion of Lots 1 and 2, West City Addition to the City of Wichita, Sedgwick County, Kansas, more particularly described as follows: Beginning at the Southeast corner of said Lot 2; thence N 90°00'00" W along the South line of Lots 2 and 1 a distance of 154.00 feet; thence N 00°02'28" W a distance of 20.00 feet; thence N 90°00'00" E a distance of 154.00 feet to the East line of said Lot 2; thence S 00°02'28" E along the East line of said Lot 2 a distance of 20.00 feet to the point of beginning.

**LEGEND**

- Existing Iron Rod  
Origin Unknown (unless noted)
- ⊙ Set 1/2"x24" Iron Rod/Cap  
(unless otherwise noted)
- △ Section Corner
- Boundary Line
- - - Setback Line
- (GLO) General Land Office
- (M) Measured Dimension
- (D) Deed Dimension
- (F) Plat Dimension
- R/W Right of Way



**SURVEYOR'S CERTIFICATION**

I, William A. Booe, a duly licensed Land Surveyor in the State of Kansas, do hereby certify that this plot was prepared from the notes of an actual on the ground field survey done by me or under my direct supervision on July 14, 2010 and that the information shown hereon is true and correct and meets or exceeds current Kansas Minimum Standards for Boundary Surveys.

William A. Booe, L.S. No. 1046

**SURVEYOR'S NOTES**

1. The bearings shown hereon are based upon the South line of West City Addition being assumed N 90°00'00" W.
2. This survey does not reflect any easements, rights-of-way, or other instruments of record which may encumber this property except those platted.
3. Underground, above ground utilities, nor improvements were located or shown on this survey.
4. All distances are measured unless otherwise noted.

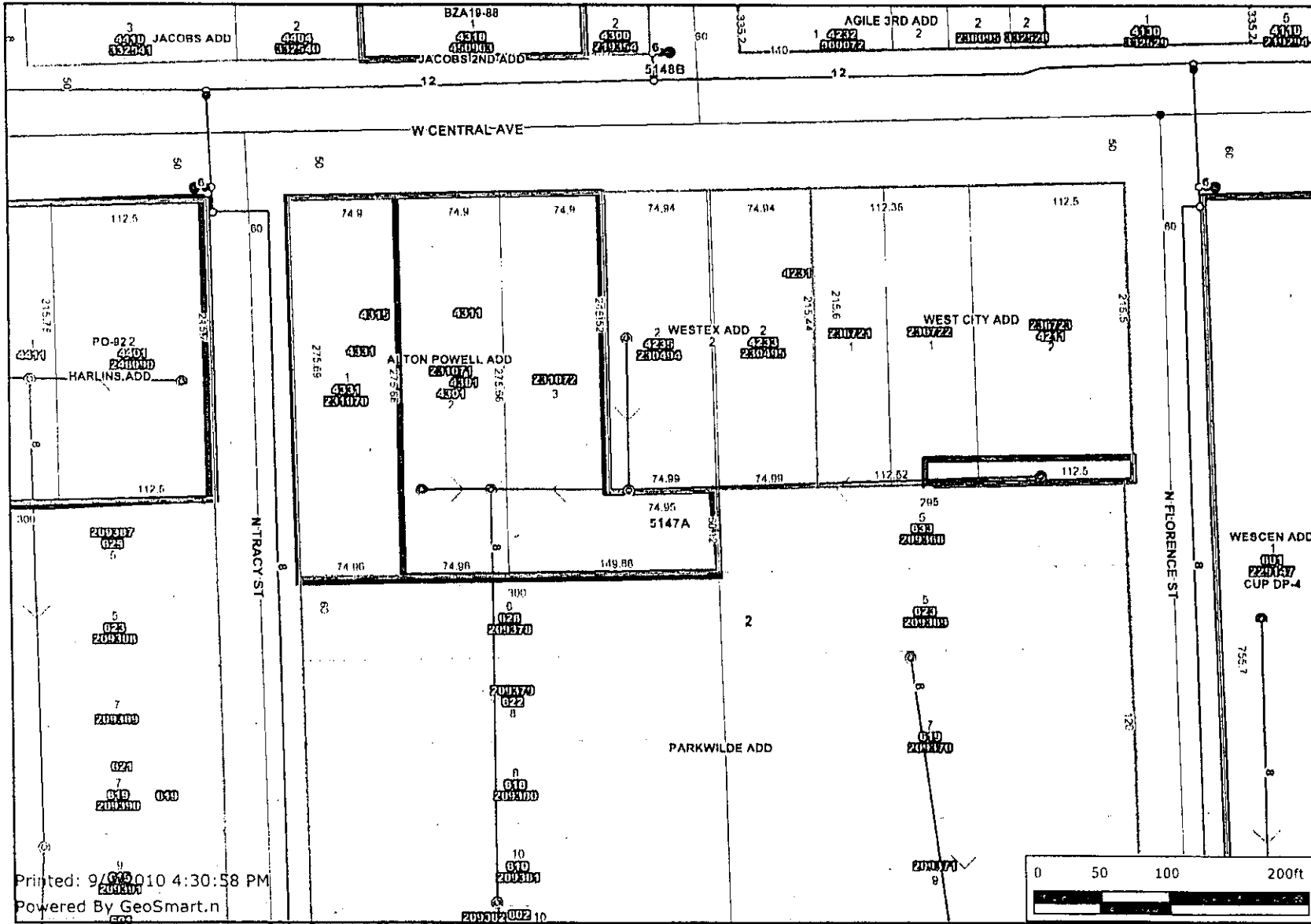
<p><b>CORNERSTONE REGIONAL SURVEYING, L.L.C.</b> 1921 N. Penn Independence, KS 67301 Ph: 620-331-6787 Fax: 620-331-6776</p>	<p>DRAWN BY: WAB</p>	<p>DATE: 8-12-2010</p>	<p>JOB NO: 1007169 Easement</p>
	<p>CHECKED BY: ALB</p>	<p>REVISION DATE: N/A</p>	<p>REFERENCE JOB NO: 1007169</p>
	<p>PREPARED FOR: GBT Realty Corp.</p>		

**BOUNDARY SURVEY of a portion of LOTS 1 & 2, WEST CITY ADDITION to the CITY OF WICHITA SEDGWICK COUNTY, KANSAS**



# vac2010-24

## water & sewer



- Sewer Manholes
- Sewer Observation Manholes
- Hydrant Schematic
- Water Valve Schematic
- Water Node Schematic
- City Limit Boundaries
- Historic Districts
- Old Town Delano Overlay District
- NO
- YES
- Property Parcels
- Lot Block
- Subdivisions
- Sewer Flow
- Sewer Lines
- Water Lines Schematic
- Roads**
  - State Highway
  - US Federal Highway
  - Interstate
  - KTA
  - Arterial
  - Collector
  - Minor
  - Ramp
- Railroads
- Quarter Section
- HOA
- Historic Sites

Printed: 9/29/2010 4:30:58 PM  
 Powered By GeoSmart.n



Every reasonable effort has been made to assure the accuracy of the maps and associated data provided herein. This information is provided with the understanding that the data are susceptible to a degree of error, and conclusions drawn from such information are the responsibility of the reader. The City of Wichita makes no warranty, representation or guaranty as to the content, accuracy, timeliness or completeness of any of the data provided herein. Some data provided here and used for the preparation of these maps has been obtained from public records not created or maintained by the City of Wichita. The City of Wichita shall assume no liability for any decisions made or actions taken or not taken by the reader in reliance upon any information or data furnished hereunder. The user should consult with the appropriate departmental staff member, e.g. Planning, Parks & Recreation, etc. to confirm the accuracy of information appearing in the visual presentations accessible through these web pages.

