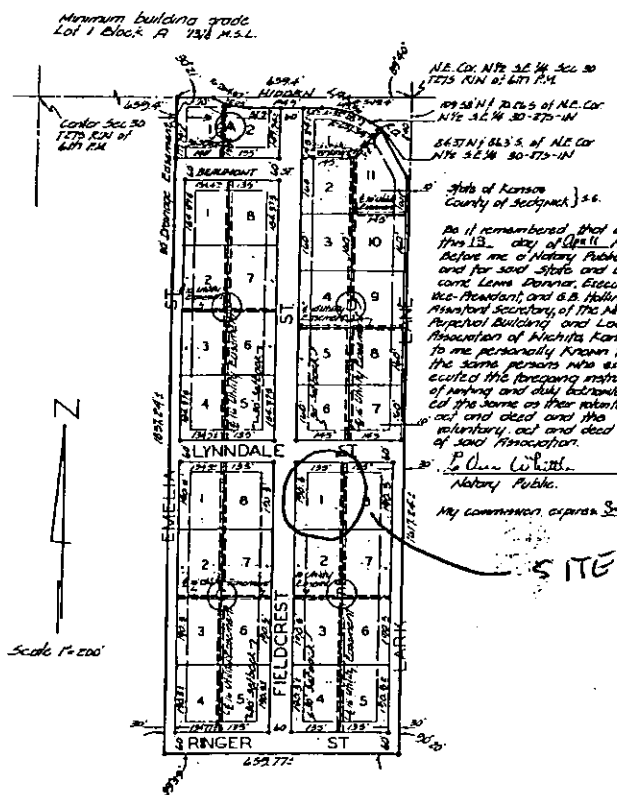


**FIELDCREST ADDITION
TO WICHITA, SEDGWICK COUNTY, KANSAS.**

8-6
D



Know all men by these presents that I, the undersigned property owner on part of the land as above set forth in the Civil Engineer's certificate have caused the same to be surveyed and platted into Blocks, Lots, Streets and a Lane the same to be known as FIELDCREST ADDITION to Wichita, Sedgwick County, Kansas. The Streets and Lane are hereby dedicated to and for the use of the public. Easements for the construction and maintenance of Public Utilities, and Drainage Easements, as indicated on the accompanying plat are hereby granted.

Anna Fran

State of Kansas
County of Sedgwick }
Be it remembered that on this 9th day of March 1965 before me a Notary Public in and for said State and County came Anna Fran, a widow, to me personally known to be the same person who executed the foregoing instrument of writing and duly acknowledged the same as her voluntary act and deed.

Carl J. Phillips Notary Public. My commission expires June 1, 1967

This plat of FIELDCREST ADDITION to Wichita, Sedgwick County, Kansas has been approved by the Wichita-Sedgwick County Metropolitan Area Planning Commission, Wichita, Kansas and is hereby transmitted to the Board of Commissioners of the City of Wichita, Kansas with the recommendation that such plat be approved as proposed. Dated this 18th day of March 1965
Wichita, Sedgwick County Metropolitan Area Planning Commission

John W. Stewart Chairman
C. Bickler Secretary

Approved by the Board of City Commissioners this 24th day of March 1965

Carl J. Stewart Mayor
Walter J. Nichols City Clerk

Approved by the Board of County Commissioners this 25th day of March 1965

W. O. Williams Chairman
Edmund J. ... Commissioner
Joe ... Commissioner

attest W. O. Williams County Clerk

Entered on transfer record this 25th day of March 1965

W. O. Williams County Clerk

10195: State of Kansas
County of Sedgwick }
This is to certify that this instrument was filed for record in the Register of Deeds Office this 25th day of May 1965 at 2:00 o'clock P.M. and is duly recorded.

Reuben E. Manning Register of Deeds
Paul ... Deputy

Know all men by these presents that we the undersigned property owners on part of the land as above set forth in the Civil Engineer's Certificate have caused the same to be surveyed and platted into Blocks, Lots, Streets and a Lane, the same to be known as FIELDCREST ADDITION to Wichita, Sedgwick County, Kansas. The Streets and Lane are hereby dedicated to and for the use of the public. Easements for the construction and maintenance of Public Utilities, and Drainage Easements, as indicated in the accompanying plat are hereby granted.

Dorcas F. Fields Bernice E. Fields

State of Kansas
County of Sedgwick }
Be it remembered that on this 24th day of March 1965 before me a Notary Public in and for said State and County came Dorcas F. Fields and Bernice E. Fields his wife, owners on part of the above described tract to personally known to be the same persons who executed the foregoing instrument of writing and duly acknowledged the same as their voluntary act and deed.

Dorcas F. Fields Bernice E. Fields Notary Public. My commission expires April 30, 1967

State of Kansas
County of Sedgwick }
I, Dan C. Moehring, C.E. a Civil Engineer in said State and County, do hereby certify that I have surveyed and platted FIELDCREST ADDITION to Wichita, Sedgwick County, Kansas, into Blocks, Lots, Streets and a Lane the same being accurately set forth in the accompanying plat and described as follows: The North 1/2 of the East 1/2 of the East 1/2 of the North 1/2 of the Southeast 1/4 of Section 30, Township 27 South Range 1 West of the 6th P.M. except beginning of the N.E. Cor. of the N 1/2 of the S.E. 1/4 of Section 30, Township 27 South Range 1 West of the 6th P.M. thence South 236 feet thence Northwesterly to a point 84.37 feet and 82.3 feet South of said N.E. Corner, thence Northwesterly to a point 10.55 feet West and 10.26 feet South of said N.E. Corner, said point being the P.C. of a curve, thence Northwesterly on a curve to the left having a radius of 257.59 feet and deflection angle of 35.25, a distance of 145.96 feet to the P.T. of said curve, said P.T. being 30 feet South of the North line of said N 1/2 of said N.E. 1/4 thence North parallel to said North line 194.9 feet to the P.C. of a curve, thence on a curve to the right having a radius of 240.1 feet, a distance of 112.05 feet to said North line of said S.E. 1/4, thence East 54.4 feet more or less to the point of beginning

Dan C. Moehring, C.E.

DAN C. MOEHRING, C.E. CONSULTING CIVIL ENGINEER.
We, The Wichita Persephal Building and Loan Association of Wichita, Kansas, mortgage on part of the above described property do hereby consent to the plat of FIELDCREST ADDITION to Wichita, Sedgwick County, Kansas.

John ... Executive Vice-President Joe ... Secretary Harold J. Thomas Notary Public. My commission expires April 30, 1967

D 8-6

Protective Covenants 30, 31, 32, 33, 34, 35, 36, 37, 38, 39, 40, 41, 42, 43, 44, 45, 46, 47, 48, 49, 50, 51, 52

original plat filed with the Sedgwick County Register of Deeds. Digitized under the supervision of Register of Deeds Bill Meek by Sedgwick County Geographic Information Systems.

Bill Meek, Register of Deeds
Digitized version of original signature



vac2010-26

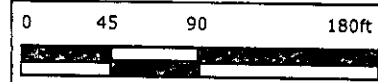
water & sewer



Selected Features

- Sewer Manholes
- Sewer Observation Manholes
- Hydrant Schematic
- Water Valve Schematic
- Water Node Schematic
- Historic Districts
- Old Town Delano Overlay District
- NO
- YES
- Property Parcels
- Lot Block
- Subdivisions
- ~ Sewer Flow
- ~ Sewer Lines
- ~ Water Lines Schematic
- Roads**
- ~ State Highway
- ~ US Federal Highway
- ~ Interstate
- ~ KTA
- ~ Arterial
- ~ Collector
- ~ Minor
- ~ Ramp
- ~ Railroads
- Quarter Section
- Waterways
- ~ Streams

Printed: 9/21/2010 4:26:03 PM
 Powered By GeoSmart, Inc



Every reasonable effort has been made to assure the accuracy of the maps and associated data provided herein. This information is provided with the understanding that the data are susceptible to a degree of error, and conclusions drawn from such information are the responsibility of the reader. The City of Wichita makes no warranty, representation or guaranty as to the content, accuracy, timeliness or completeness of any of the data provided herein. Some data provided here and used for the preparation of these maps has been obtained from public records not created or maintained by the City of Wichita. The City of Wichita shall assume no liability for any decisions made or actions taken or not taken by the reader in reliance upon any information or data furnished hereunder. The user should consult with the appropriate departmental staff member, e.g. Planning, Parks & Recreation, etc. to confirm the accuracy of information appearing in the visual presentations accessible through these web pages.

