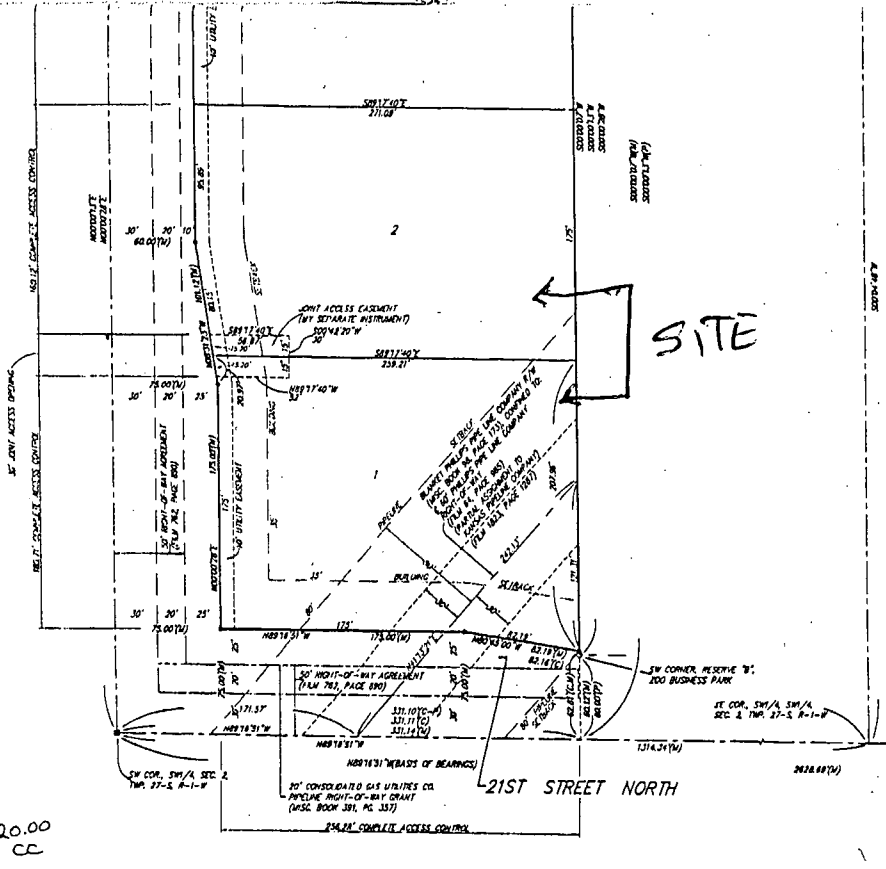


PC129-7

20.00
D



This plat approved and all calculations shown hereon accepted by the City Council of the City of Wichita, Kansas, this 14 day of AUGUST, 2001.

At the direction of the City Council



[Signature] City Manager
Chris Cherches

[Signature] City Clerk
Pat Burnett

Reviewed in accordance with K.S.A. 58-2005 on this 14th day of June, 2001.

[Signature]
Tricia L. Robello, L.S. #1246
Deputy County Surveyor
Sedgwick County, Kansas



Entered on transfer record this 23rd day of August, 2001.

[Signature] County Clerk
Don Brace

State of Kansas) SS This is to certify that this plat has been
Sedgwick County) filed for record in the office of the Register of Deeds, this 24th day
of August, 2001 at 3:04 o'clock P.M. and is duly recorded.

[Signature] Register of Deeds
Bill Meek

[Signature] Deputy
Linda Kizzire

2004039

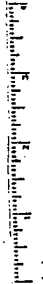


BAUGHMAN COMPANY P. A.
ENGINEERING, SURVEYING & PLANNING
214-352-7471 • 115 EAST WASHINGTON, SUITE 100
WICHITA, KANSAS 67202



Inches

This digital plat record accurately reproduces in all details the original plat filed with the Sedgwick County Register of Deeds. Digitized under the supervision of Register of Deeds Bill Meek by Sedgwick County Geographic Information Systems.
[Signature]
Bill Meek, Register of Deeds
Digitized version of original plat.



Inches