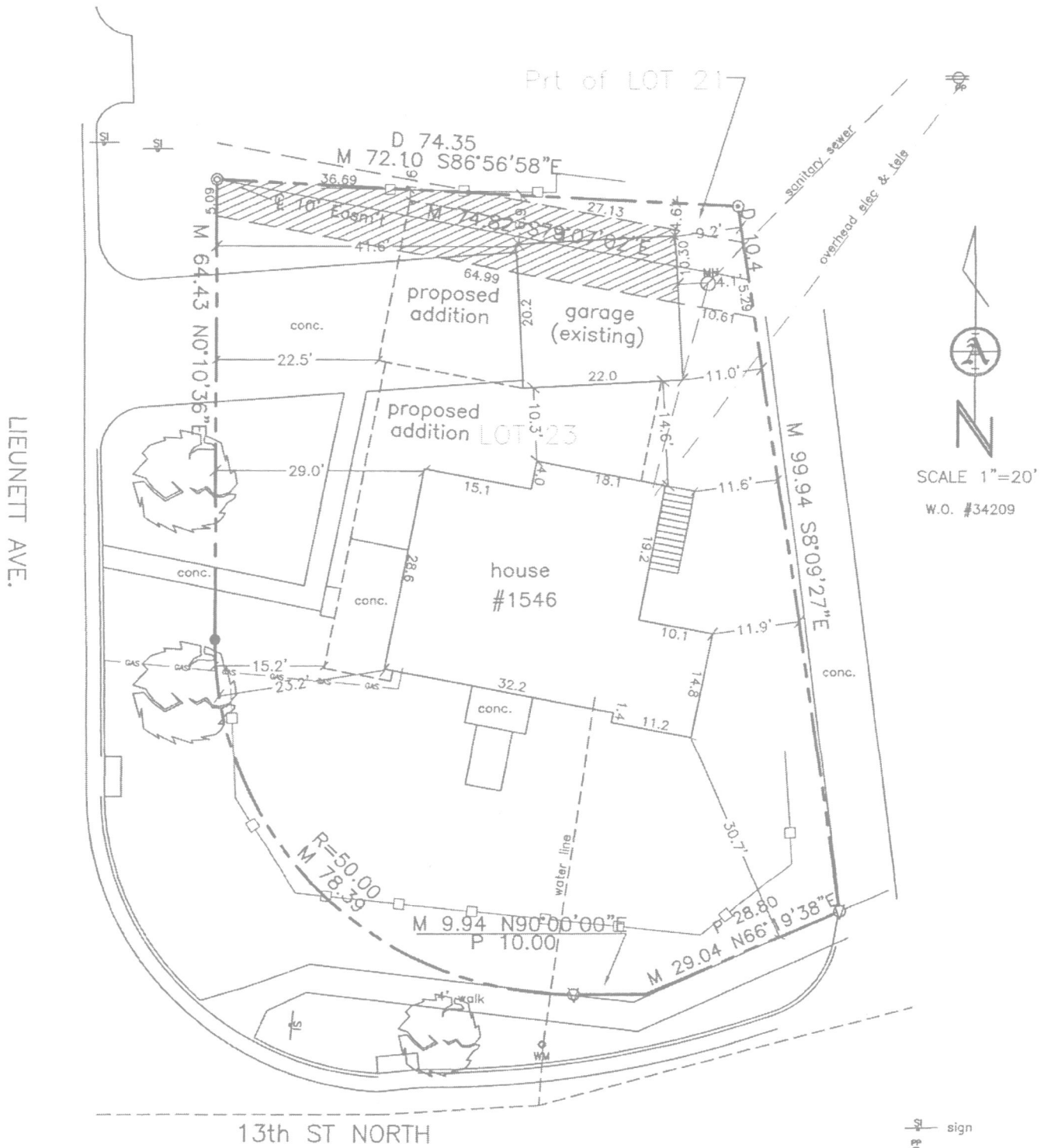


SITE PLAN

LEGAL: Lo 23 & Prt Lot 21, Blk. C, Woodrow Court Add. to Wichita, KS



SCALE 1"=20'
W.O. #34209

ARMSTRONG
LAND SURVEY, P.A.

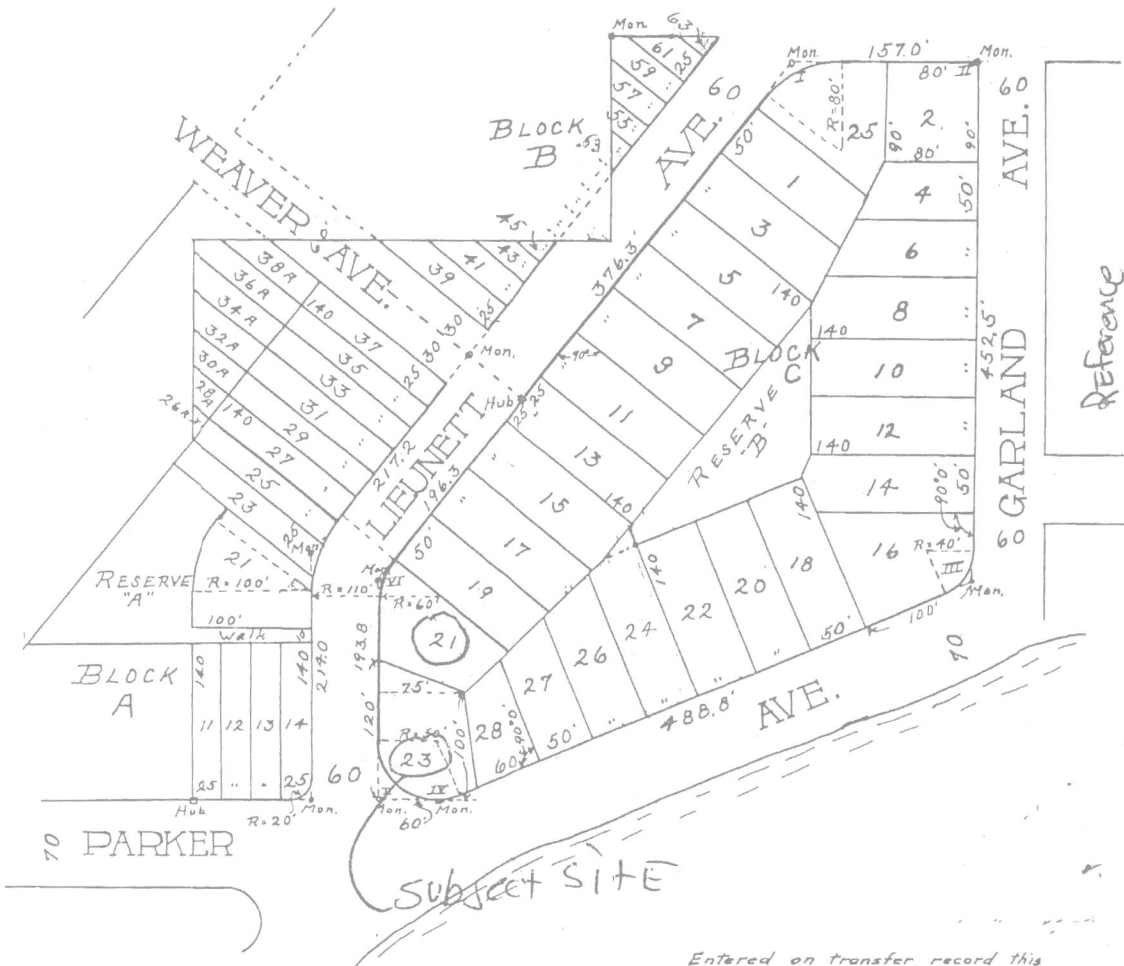
1601 E HARRY
WICHITA, KANSAS
PH - (316) 263-0082
Fax - (316) 263-0092

- - "Armstrong" capped rebar set
- ⌵ - chisled "V" set in conc.
- ⊙ - 1/2" iron pipe found
- ⊙ - 3/4" iron pipe found
- ⊕ - sign
- ⊕ - power pole
- ⊕ - manhole
- ⊕ - water meter
- M - measured dist
- P - plat distance
- D - deed distance

W2-7-5

WOODROW COURT

AN ADDITION TO
WICHITA KANSAS



Know all men by these presents, that we, Alton H. Smith and Kate E. Smith, his wife, and Geo. V. Smith and Anna M. Smith, his wife, have caused the land described in the surveyor's certificate to be platted into lots and streets, as shown on the accompanying plat; the same to be known as WOODROW COURT, an addition to Wichita, Kansas.

The streets shown on the plat are hereby dedicated to and for the use of the public.

The City of Wichita is hereby granted the right to construct, operate and maintain all public utilities on the rear five (5) feet of Lots 26A to 39A, inclusive, Lots 23 to 37 inclusive and the rear ten (10) feet of Lots 11 to 14 inclusive, in Block A and the south five (5) feet of Lot 21 and the north five (5) feet of Lot 23, the east five (5) feet of Lot 25, the west five (5) feet of Lot 2 and the rear ten (10) feet of all other lots in Block C.

Alton H. Smith, Kate E. Smith, Geo. V. Smith, Anna M. Smith

State of Kansas }
County of Sedgwick } S.S.

Be it remembered that on this 3 day of September 1923, before me, a notary public in and for said county and state came Alton H. Smith and Kate E. Smith, his wife, and Geo. V. Smith and Anna M. Smith, his wife, to me, personally known to be the same persons who executed the foregoing instrument of writing and duly acknowledged the same as their voluntary act and deed.

Jarvis S. Mendenhall
NOTARY PUBLIC

My commission expires Dec 26, 1926

State of Kansas }
County of Sedgwick } S.S.

I, R.L. Brockway, a civil engineer in said county and state, hereby certify that I have surveyed and platted the following described property into lots and streets, into an addition to the City of Wichita, said addition to be known as WOODROW COURT; and that the accompanying plat is a true and correct exhibit

Entered on transfer record this
5 day of Oct 1923.

Fred Horn
County Clerk.

State of Kansas }
County of Sedgwick } S.S.

This plat of WOODROW COURT has been submitted to, and considered by the City Planning Commission of the City of Wichita, Kansas, and is hereby transmitted to the Board of Commissioners of the City of Wichita, Kansas, with the

W2-7-5