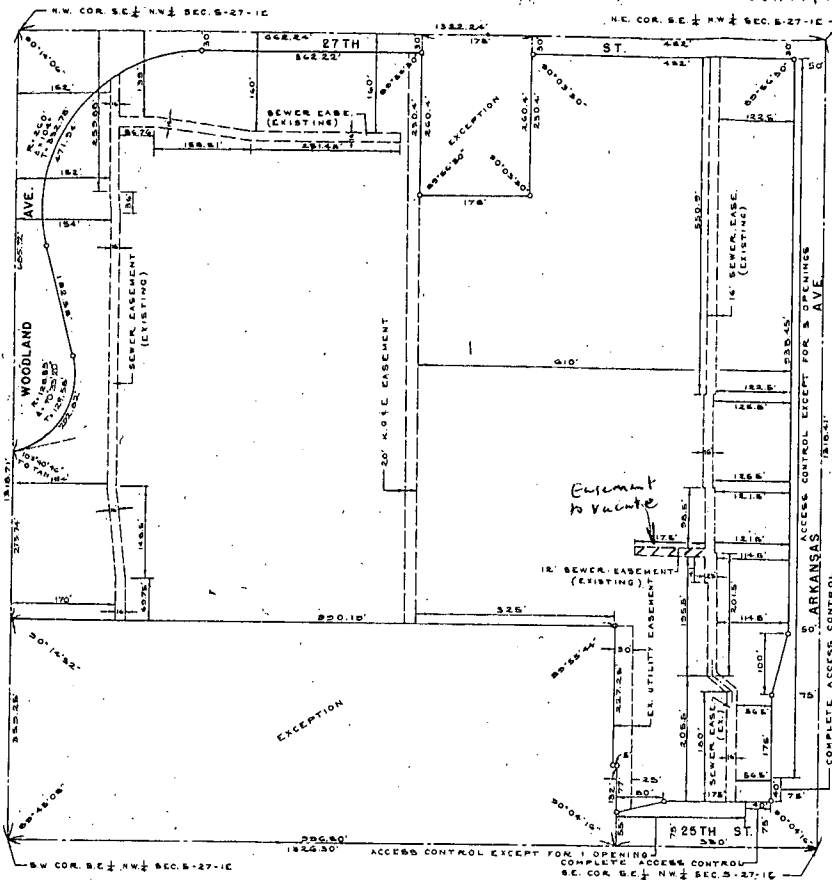


EVERGREEN PARK

WICHITA, SEDGWICK COUNTY, KANSAS



State of Kansas, County of Sedgwick, SS.

I, Kenneth D. Taylor, Civil Engineer in said State and County, do hereby certify that I have surveyed and platted "EVERGREEN PARK", Wichita, Sedgwick County, Kansas, and that the accompanying plat is a true and correct exhibit of said survey described as follows: The SE $\frac{1}{4}$ of the NW $\frac{1}{4}$ of Section 5, T27N, R12E of the 6th P.M., Sedgwick County, Kansas, except the following described tracts:

1. The west 178 feet of the east 660 feet of the north 200.4 feet of said SE $\frac{1}{4}$ of said NW $\frac{1}{4}$.
2. Beginning at a point on the south line of said SE $\frac{1}{4}$ of said NW $\frac{1}{4}$, 330 feet west of the SE corner of said SE $\frac{1}{4}$ of said NW $\frac{1}{4}$; thence north parallel to the east line of said SE $\frac{1}{4}$ of said NW $\frac{1}{4}$, 132 feet; thence west parallel to said south line, 5 feet; thence north parallel to said east line, 227.25 feet; thence west parallel to said south line, 990.19 feet to the west line of said SE $\frac{1}{4}$ of said NW $\frac{1}{4}$; thence south on said west line, 399.25 feet to the SW corner of said SE $\frac{1}{4}$ of said NW $\frac{1}{4}$; thence east 995.30 feet to the point of beginning.

Shelton Ave. as platted in Ramsey-Kester Addition to Wichita, Kansas, and the east 30 feet of Shelton Ave. as platted in Ramsey and Fuller Addition to Wichita, Kansas, and the east 30 feet of Shelton Ave. as platted in Woodland Heights Addition to Wichita, Kansas, and Shelton Ave. as platted in Shepherd Addition to Wichita, Kansas, all being vacated by virtue of K.S.A. 1970 Supp. 12-512(b).

Kenneth D. Taylor
Kenneth D. Taylor, Civil Engineer

Know all men by these presents that The Board of Park Commissioners of the City of Wichita, Kansas, by Honey D. Woodard, President, has caused the land described in the Civil Engineer's certificate to be platted into a lot and streets to be known as "EVERGREEN PARK", Wichita, Sedgwick County, Kansas.

All abutter's rights of access to or from 25th Street, over and across the east 40 feet of the south line of Lot 1 and all abutter's rights of access to or from Arkansas Avenue, over and across the south 40 feet of the east line of Lot 1, are hereby granted to the City of Wichita.

All abutter's rights of access to or from 25th Street, over and across the south line of Lot 1, except the east 40 feet of the south line of said Lot 1, are hereby granted to the City of Wichita, provided, however, that Lot 1 shall have access to 25th Street at one location to be designated by the City Engineer of the City of Wichita, Kansas.

All abutter's rights of access to or from Arkansas Avenue, over and across the east line of said Lot 1, except the south 40 feet of the east line of said Lot 1, are hereby granted to the City of Wichita, provided, however, that Lot 1 shall have access to Arkansas Avenue at 3 locations to be designated by the City Engineer of the City of Wichita, Kansas.

The streets are hereby dedicated to and for the use of the public.

The Board of Park Commissioners of the City of Wichita, Kansas

ATTEST: *Honey D. Woodard*, President
Willa Puck, Clerk

State of Kansas, County of Sedgwick, SS.

Be it remembered, that on this 22nd day of June, 1976, before me the undersigned, a notary PUBLIC in and for the County and State aforesaid, came Honey D. Woodard, President of The Board of Park Commissioners of the City of Wichita, Kansas, to me personally known to be the same person who executed the within instrument as President of said Board of Park Commissioners and such person duly acknowledged the execution of same as President, for and on behalf of and as the act and deed of said Board of Park Commissioners. In testimony whereof, I have hereunto set my hand and affixed my notarial seal the day and year above written.

Merna M. Quadrillo, Notary Public

My Commission expires: November 3, 1979

This plat of "EVERGREEN PARK", Wichita, Sedgwick County, Kansas, has been submitted to and approved by the Wichita-Sedgwick County Metropolitan Area Planning Commission, Wichita, Kansas.

Dated this 24th day of JUNE, 1976.

Wichita-Sedgwick County Metropolitan Area Planning Commission

By *David Boyd*, Chairman
Robert A. Lakin, Secretary

This plat approved and all dedications shown hereon, if any, accepted by the Board of City Commissioners of the City of Wichita, Kansas, this 15 day of July, 1976.

James M. Howell, Mayor
Donald C. Glick, Councilman

This plat approved and all dedications shown hereon, if any, accepted by the Board of County Commissioners of Sedgwick County, Kansas, this 21st day of July, 1976.

ATTEST: *John Dale*, Chairman
George Burns, Commissioner
Tom Scott, Commissioner
George Burns, County Clerk

Entered on transfer record this 21 day of July, 1976.
George Pierce, County Clerk

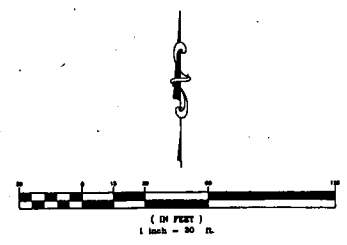
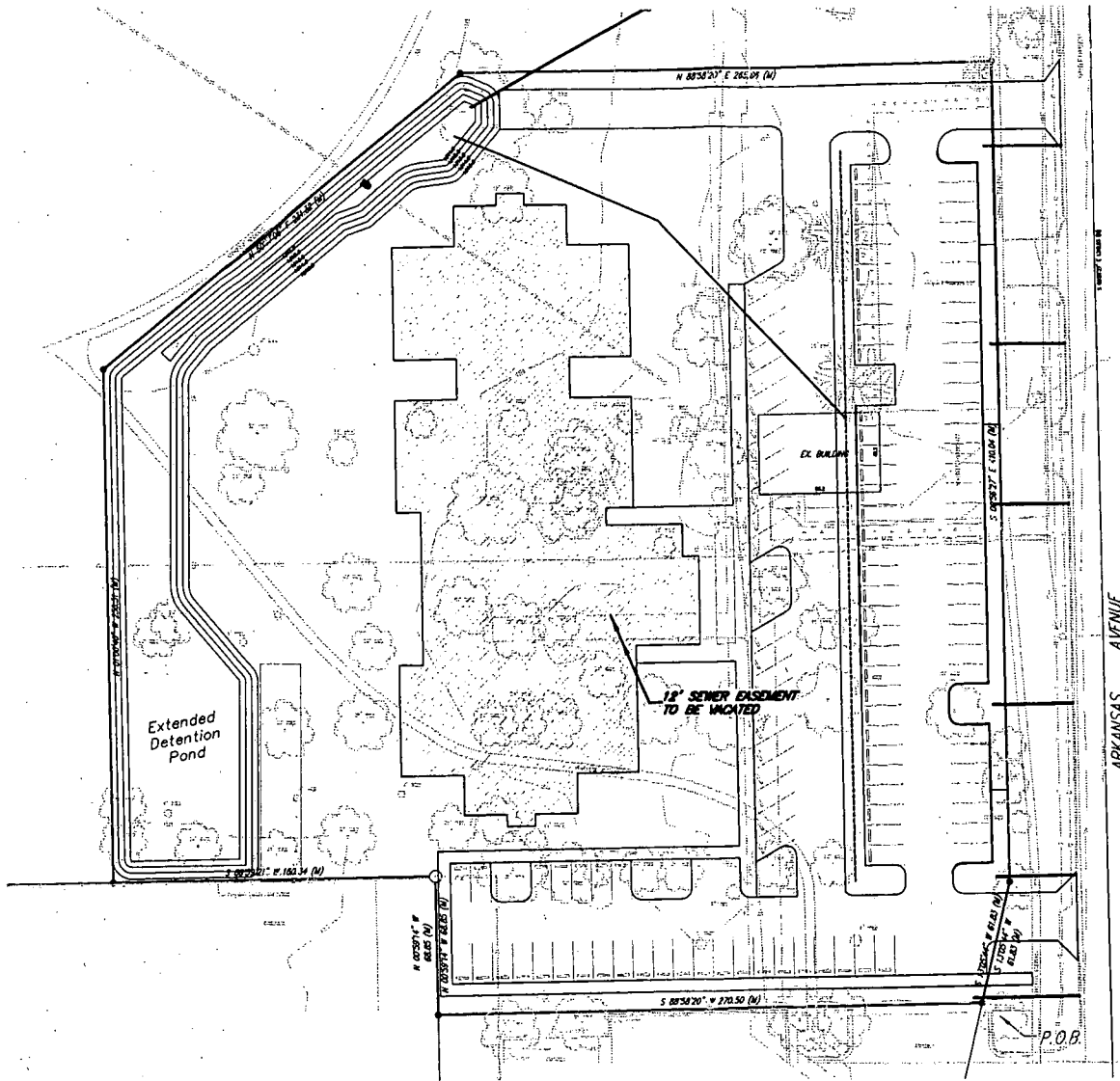
State of Kansas, County of Sedgwick, SS.

This is to certify that this instrument was filed for record in the Register of Deeds Office, at 11:30 a.m., on the 21st day of JULY, 1976.

Bette J. McCort, Register of Deeds
Pat Kessler, Deputy

#287718

2880



Top North School
Site Plan
 Wichita, Kansas

PROJECT NUMBER			
kemiller <small>architectural</small>	CON. NO. 10147	FILE site	DATE 12/2010
218 S. Market, Wichita, KS 67203	DESIGN GP	DRAWING GP	REVISED OF