



Wichita-Sedgwick County Metropolitan Area Planning Department

July 26, 2011

Carolyn S. & George Bradbury
14500 Sports of Kings
Wichita KS 67230

Re: **VAC2011 -00013**- City request to vacate a portion of platted complete access control, generally located north of 13th Street N, on the southeast corner of 143rd Street E and Sundance Street.

Dear Mr. & Mrs. Bradbury:

At its regular meeting on Tuesday, July 26, 2011 the Wichita City Council considered the request. The action of the City Council was to APPROVE subject to the recommendation by the MAPC.

If you have any questions about this matter, please call 268-4494.

Sincerely,

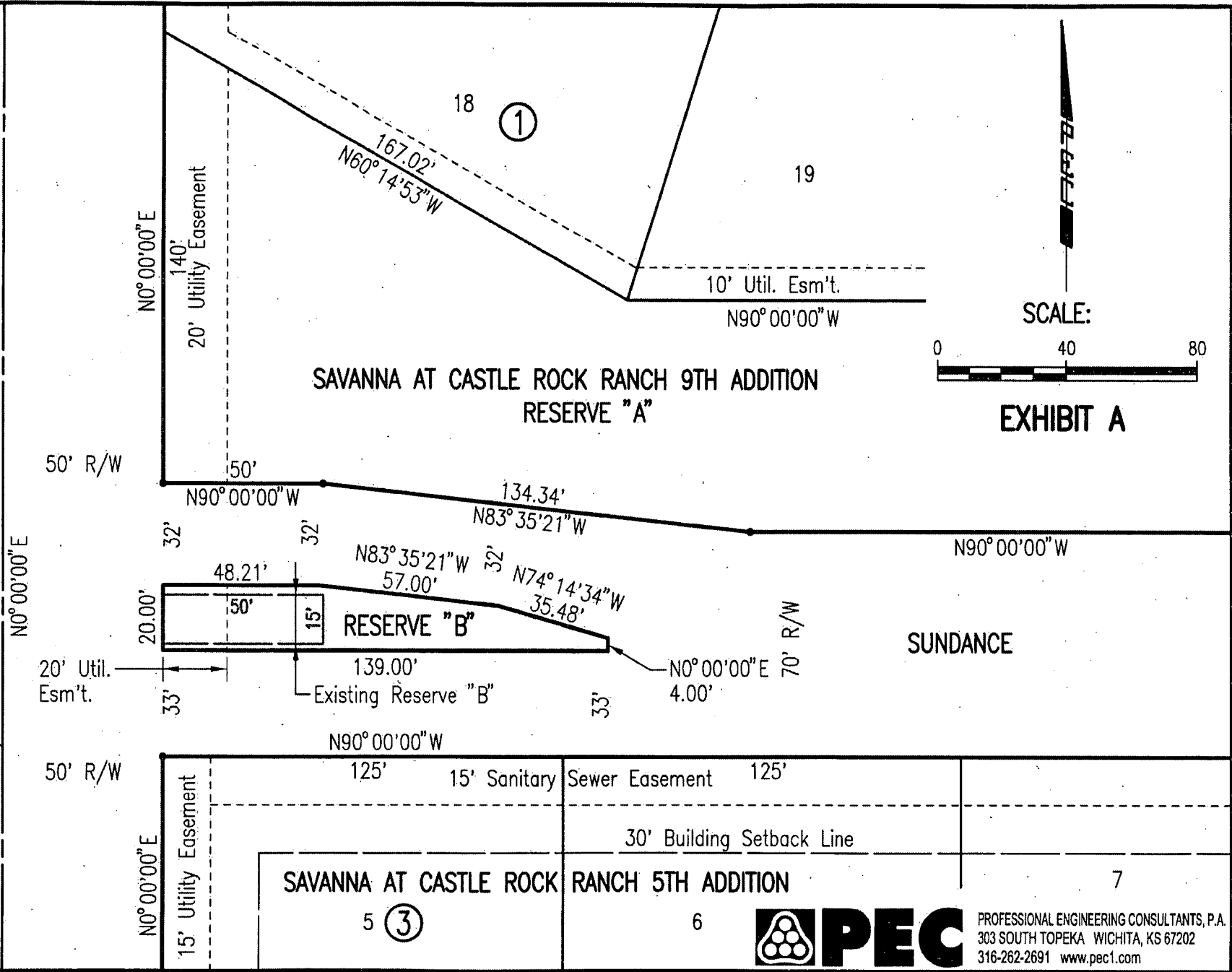
Bill Longnecker
Senior Planner

BL:le

cc: Jim Armour, City Engineer, Public Works Department (email)
Carla Jones / Paul Gunzelman, Public Works Engineering (email)
Julianne Kallman, Public Works Engineering (email)
Kerry Gibson, Water & Sewer (email)

Saved 05-20-2011 2:14:24 PM by JTS
 Plot Scale 1:40 05-20-2011 2:19:17 PM by JTS
 Q:\2011\11279\11279 Reserve Correction

143RD STREET EAST = SECTION LINE



SCALE:
 0 40 80
EXHIBIT A

PEC PROFESSIONAL ENGINEERING CONSULTANTS, P.A.
 303 SOUTH TOPEKA WICHITA, KS 67202
 316-262-2691 www.pec1.com