

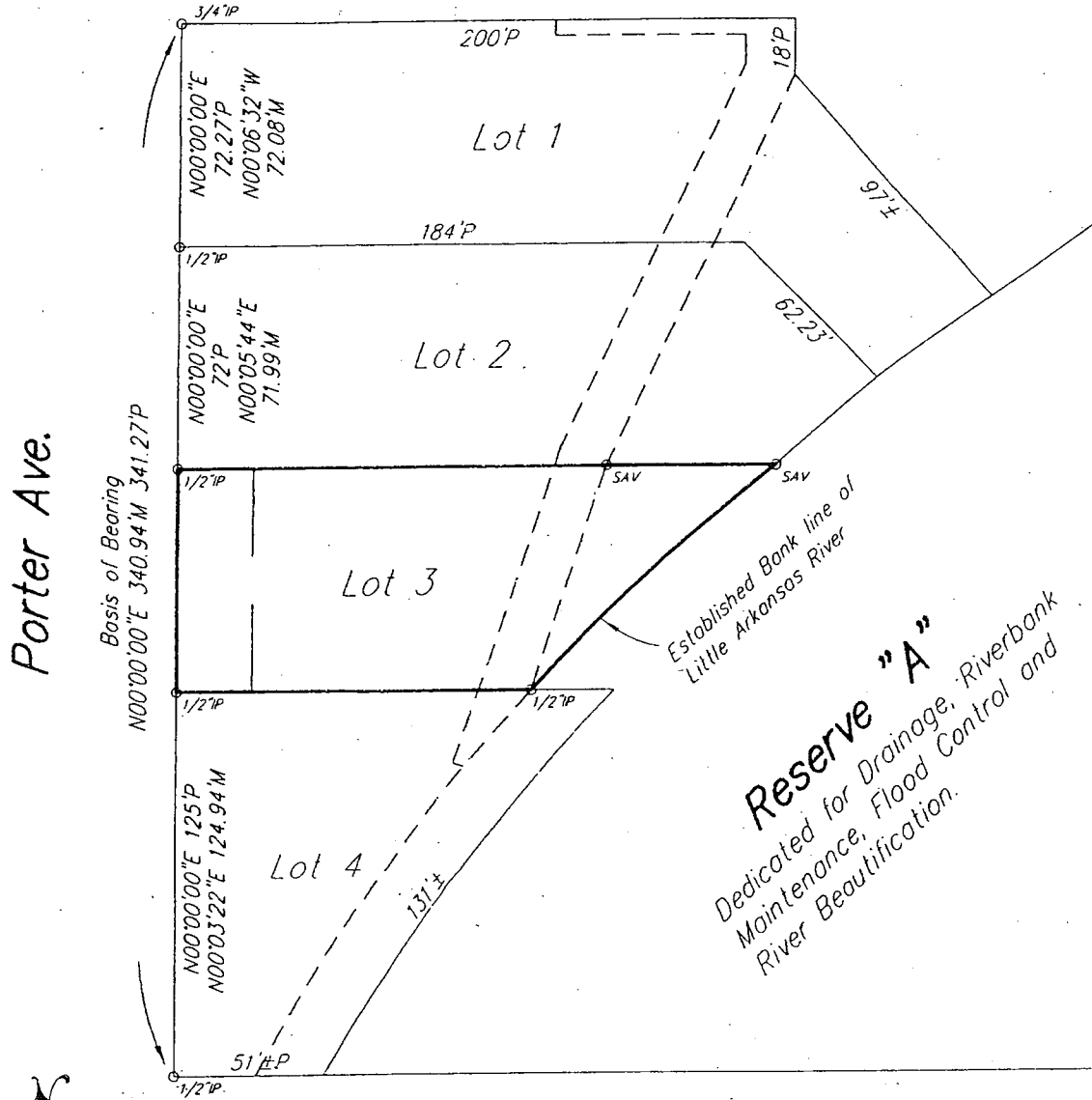


Savoy Company, P.A.

433 S. Hydraulic
Wichita, KS 67211-1911

PH (316) 265-0005
FAX (316) 265-0275
www.savoyco.com

Page 3 of 3



Porter Ave.

Basis of Bearing
N00°00'00"E 340.94'M 341.27'P

Established Bank line of
Little Arkansas River

Reserve "A"
Dedicated for Drainage, Riverbank
Maintenance, Flood Control and
River Beautification.



P = Plotted
M = Measured
C = Calculated
CH = Chord

- o 1/2" IP 1/2" IRON PIPE (FOUND)
- o 3/4" IP 3/4" IRON PIPE (FOUND)
- o SAV 1/2" REBAR W/SAVOY CAP (SET)

1" = 60'

PROJECT NO. 11GG12+13 B

