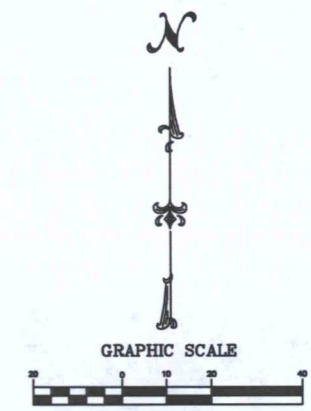
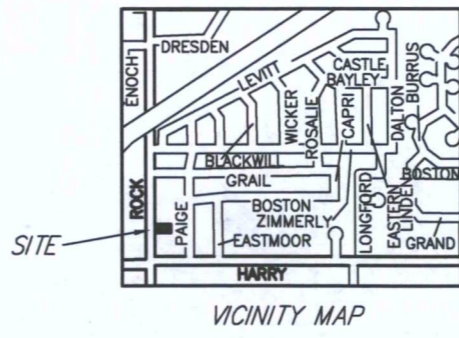
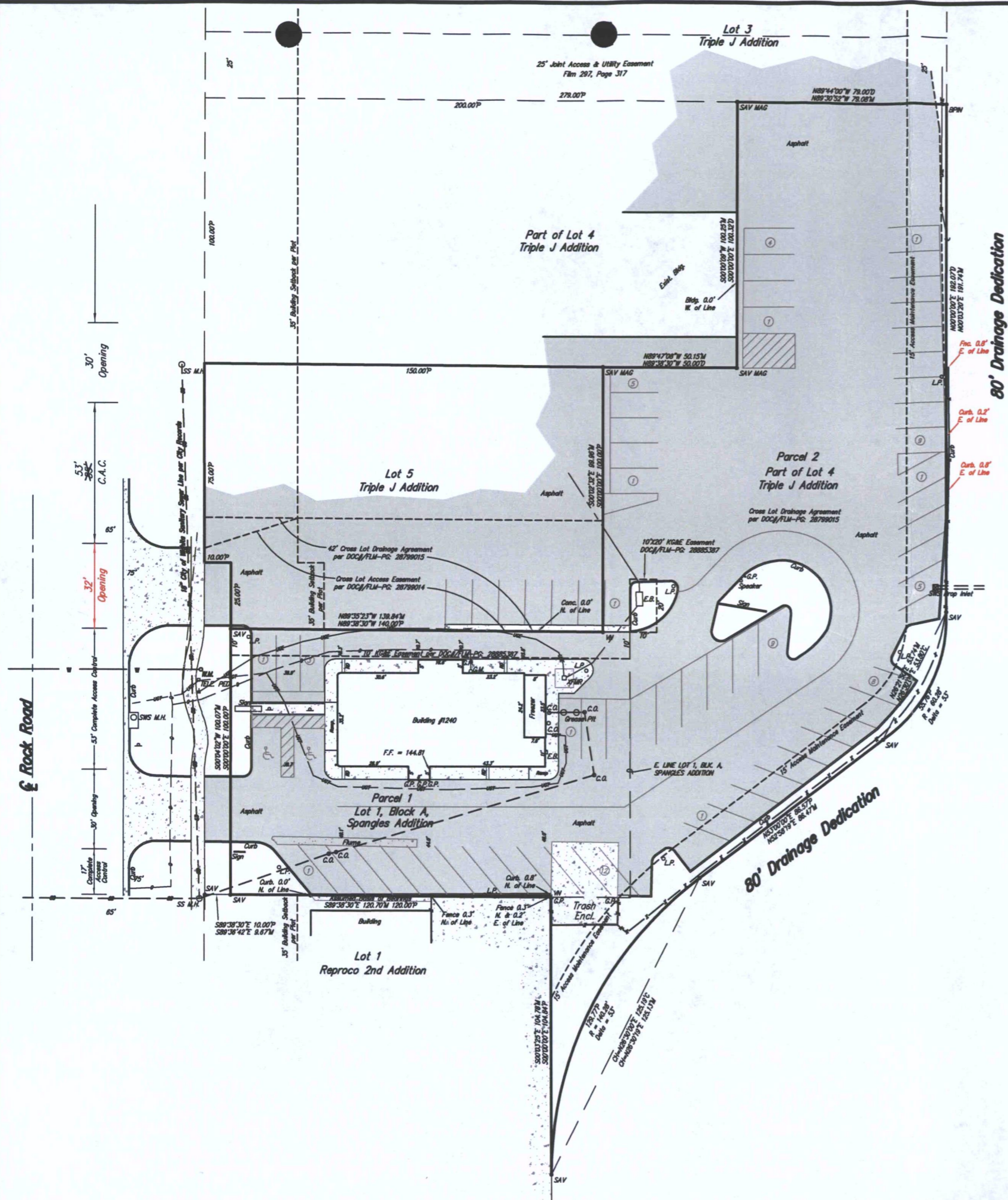


EXHIBIT

Vacation of a portion of Access Control to 1230 S. Rock Road, over the following described property:

The South 32 feet of the West Line of Lot 5, Triple J Addition, Wichita, Sedgwick County, Kansas.



- LEGEND**
- G = GAS MAIN
 - W = WATER MAIN
 - SS = SANITARY SEWER
 - SWS = STORM WATER SEWER
 - UGE = UNDER GROUND ELECTRIC
 - UGT = UNDER GROUND TELEPHONE
 - XFRM = ELECTRIC TRANSFORMER
 - TELE. PED = TELEPHONE PEDESTAL
 - C.O. = CLEAN OUT
 - E.B. = ELECTRIC BOX
 - GUY ANCHOR
 - G.M. = GAS METER
 - G.P. = GUARD POST
 - ⊕ = HIGH LINE POLE
 - ICV = IRRIGATION CONTROL VALVE
 - L.P. = LIGHT POLE
 - ⊕ = POWER POLE
 - RD = ROOF DRAIN
 - 4 = SIGN
 - W.M. = WATER METER
 - W.V. = WATER VALVE
 - SS M.H. = SANITARY SEWER MANHOLE
- SURVEY MARKER LEGEND**
- CROSS = CHISELED CROSS IN CONCRETE (FOUND)
 - IN. = V NOTCH CHISELED IN CONCRETE (FOUND)
 - SAV. = 1/2" REBAR WITH SAVOY CAP (FOUND)
 - BPN. = 1/2" REBAR WITH BAUGHMAN CAP (FOUND)
 - SAV MAG. = MAG NAIL WITH SAVOY WASHER (FOUND)
- LEGEND**
- P = Plotted
 - M = Measured
 - C = Calculated
 - D = Described
 - CH = Chord



Wichita-Sedgwick County Metropolitan Area Planning Department

February 29, 2012

Gold Key Real Corporation
5057 N. Lake Breeze Ct.,
Bel Air KS 67226

Re: **VAC2011 -00031**- City request to vacate a portion of platted complete access control; generally located north of Harry Street, on the east side of Rock Road:

Dear Ladies & Gentlemen:

At its regular meeting on Tuesday, February 28, 2012, the Wichita City Council considered the request. The action of the City Council was to APPROVE subject to the recommendation by the MAPC.

If you have any questions about this matter, please call 268-4494.

Sincerely,

Bill Longnecker
Senior Planner

BL:le

cc: Gary Janzen, Interim City Engineer, Public Works Department, mailstop 1-71 (email)
Carla Jones / Paul Gunzelman, Public Works Engineering, mailstop 1-71 (email)
Julianne Kallman, Public Works Engineering, mailstop 1-71 (email)
Aaron Henning, Public Works Engineering mailstop 1-82 (email)
Terry Nicholas, Public Works Engineering, mailstop 1-82 (email)
Donald Craddock, Public Works Engineering, mailstop 1-81(email)
Zongbin Zhao, Public Works Engineering, mailstop 1-82 (email)
Kerry Gibson, Water & Sewer, mailstop 1-81 (email)
Doug Malone, 150 N. Market, Wichita KS 67202
Spangles Inc., 437 N. Hillside, Wichita KS 67214
Mark Savoy, 433 S. Hydraulic, Wichita KS 67211
TDFW, LLC, 150 N. Market, Wichita KS 67202
Wilamac Inc., 601 Euclid Ave., Helena MT 59601
City Hall • 10th Floor • 455 North Main • Wichita, Kansas 67202-1688

T 316.268.4421 F 316.268.4390

www.wichita.gov