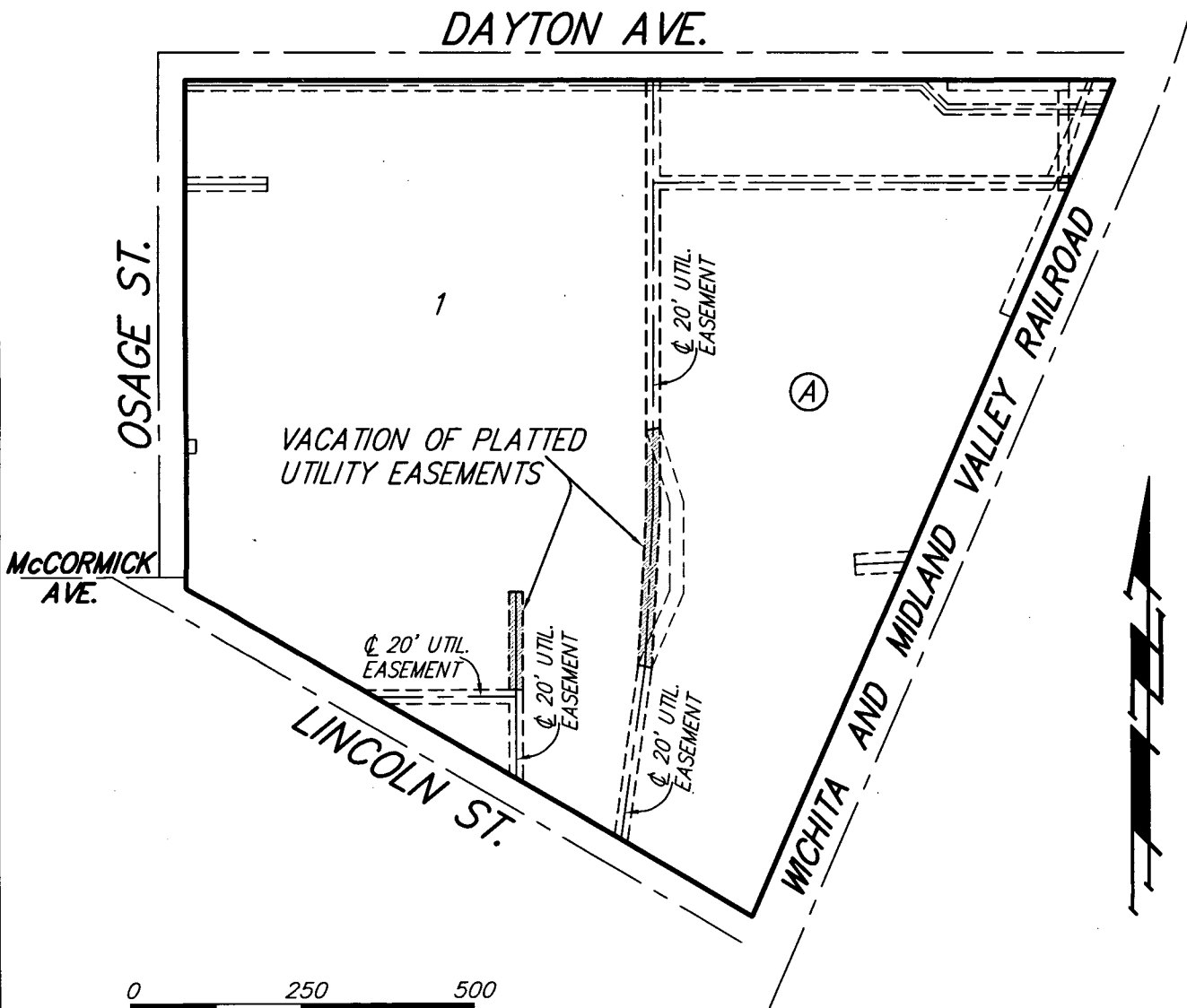


EXHIBIT "A"

LOT 1, BLOCK A, WEST HIGH SCHOOL ADDITION

 INDICATES AREA OF
LEGAL DESCRIPTION



23 NOV 2011

 **Baughman Company, P.A.**
315 E 18th St. Wichita, KS 67211 P 316-262-7271 F 316-262-0149
Baughman ENGINEERING | SURVEYING | PLANNING | LANDSCAPE ARCHITECTURE

C:\PIAT\WEST HIGH ESMT VAC.DWG-MGC