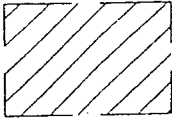
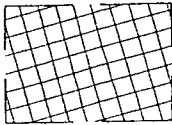


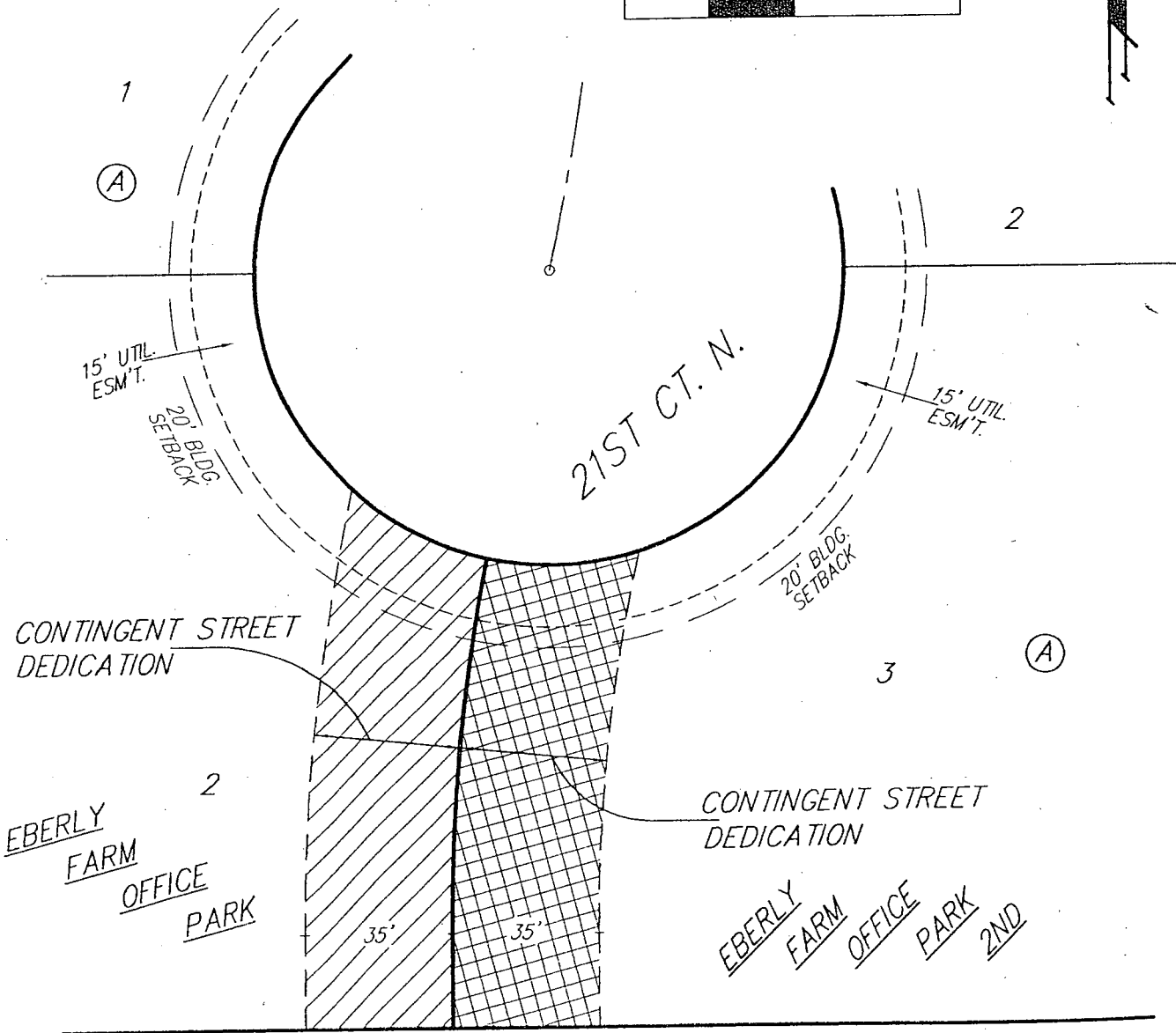
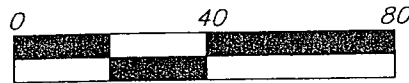
EXHIBIT "A"



INDICATES AREA OF LEGAL DESCRIPTION
VACATING CONTINGENT STREET DEDICATION
IN EBERLY FARM OFFICE PARK



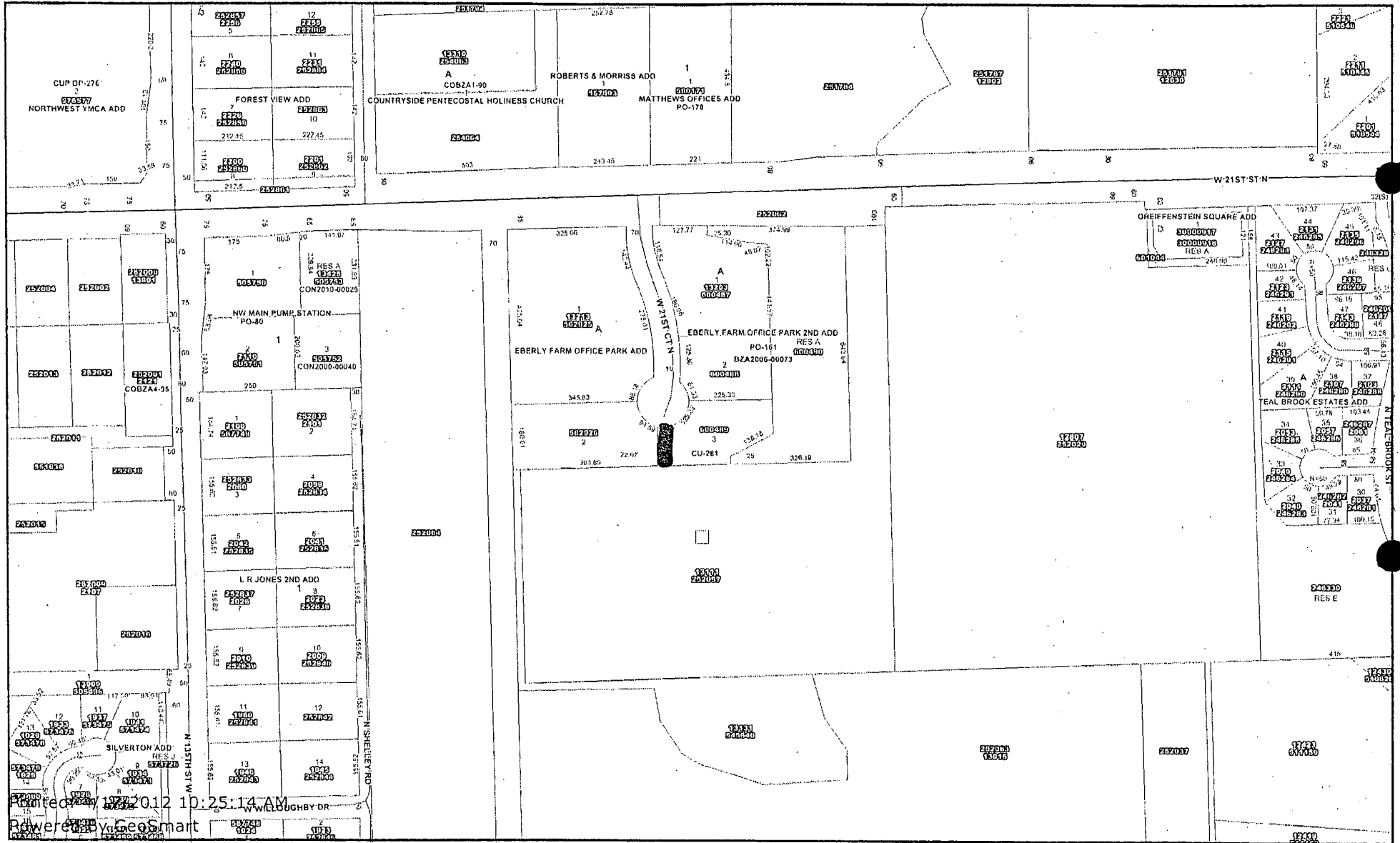
INDICATES AREA OF LEGAL DESCRIPTION
VACATING CONTINGENT STREET DEDICATION
IN EBERLY FARM OFFICE PARK 2ND



B Baughman Company, P.A.
 315 Ellis St. Wichita, KS 67211 P 316-262-7271 F 316-262-0149
 Baughman ENGINEERING | SURVEYING | PLANNING | LANDSCAPE ARCHITECTURE
 C:\PLA\EBERLY CON VAC.X.DWG\MCC



VAC 2012-11



Printed on 11/22/2012 10:25:14 AM
 Powered by GeoSmart



Every reasonable effort has been made to assure the accuracy of the maps and associated data provided herein. This information is provided with the understanding that the data are susceptible to a degree of error, and conclusions drawn from such information are the responsibility of the reader. The City of Wichita makes no warranty, representation or guaranty as to the content, accuracy, timeliness or completeness of any of the data provided herein. Some data provided here and used for the preparation of these maps has been obtained from public records not created or maintained by the City of Wichita. The City of Wichita shall assume no liability for any decisions made or actions taken or not taken by the reader in reliance upon any information or data furnished hereunder. The user should consult with the appropriate departmental staff member, e.g. Planning, Parks & Recreation, etc. to confirm the accuracy of information appearing in the visual presentations accessible through these web pages.

