

Gary & Cathy Schmitt 14000 PINNACLE Drive Wichita KS

67230

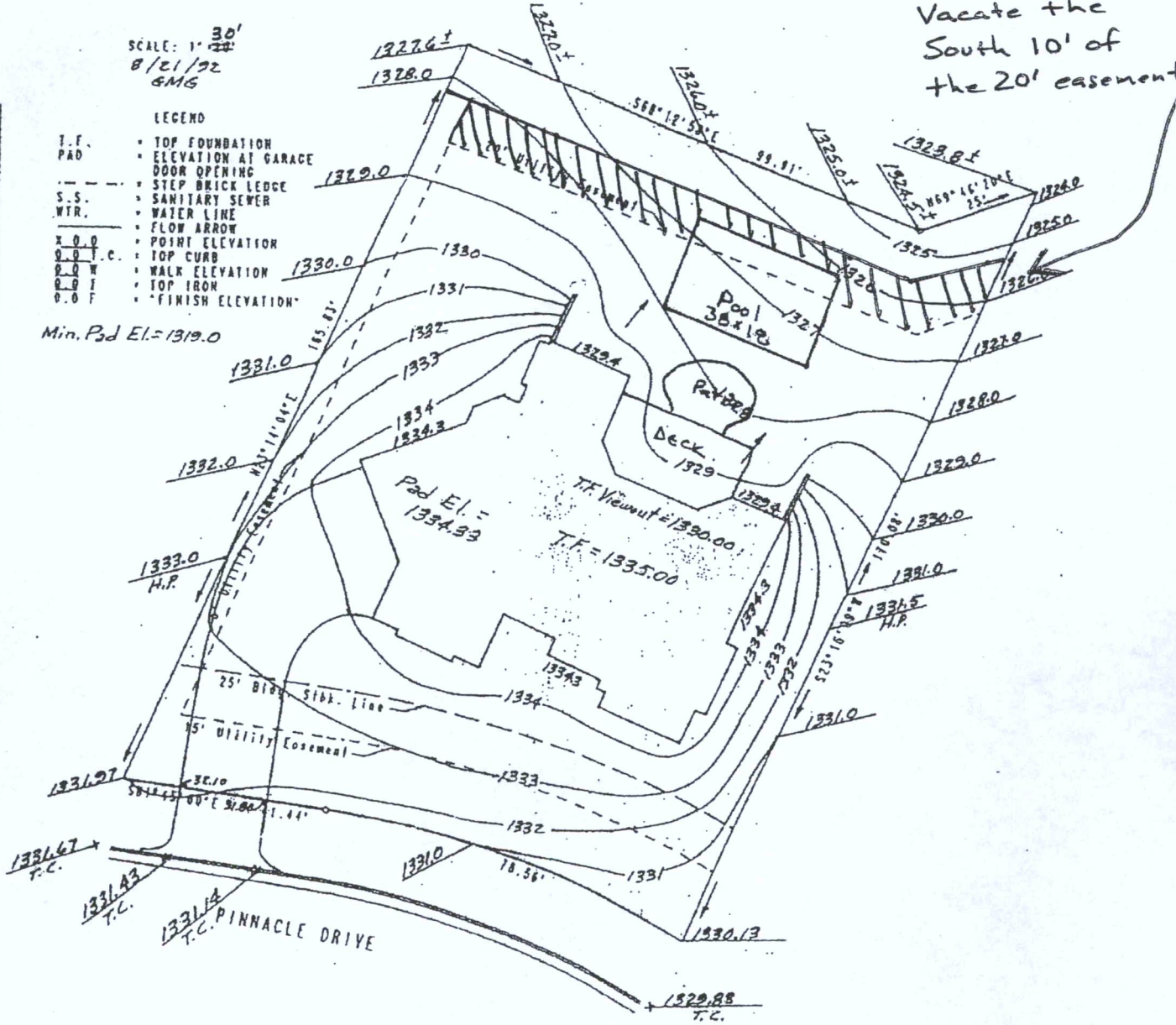
PINNACLE AT CRESTVIEW
LOT 22, BLOCK 1
SEDGWICK COUNTY
KANSAS

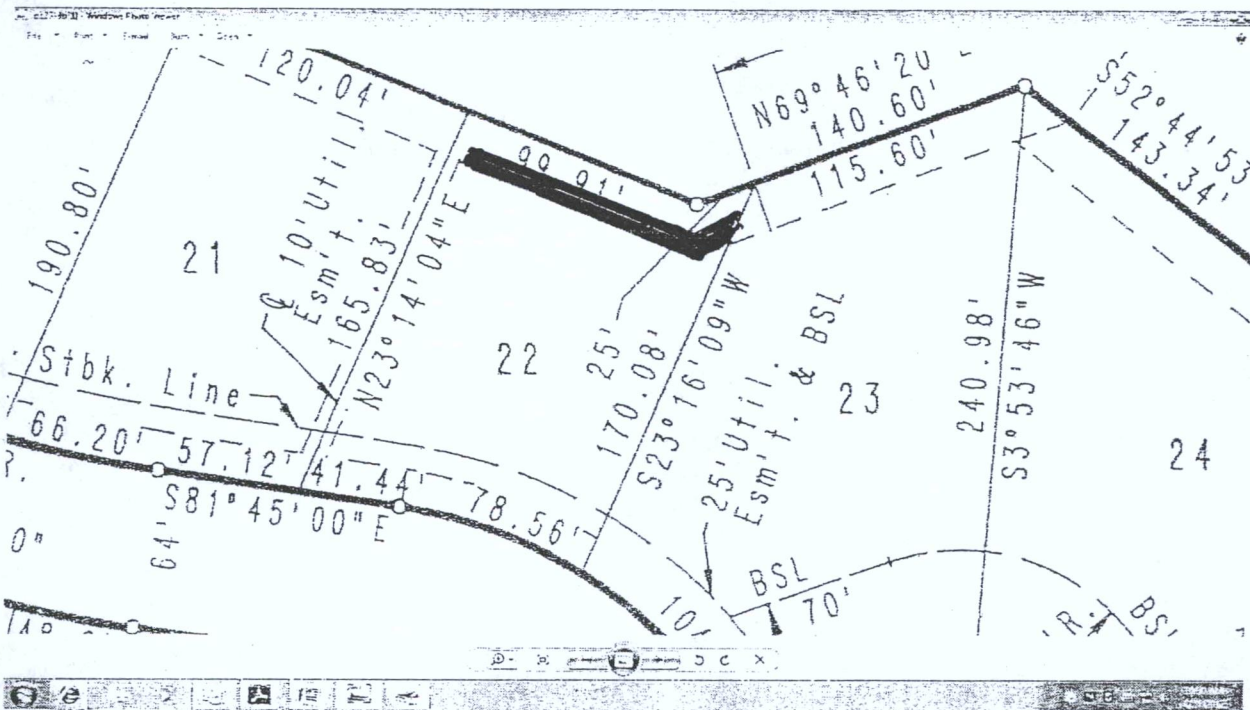
REQUEST TO
Vacate the
South 10' of
the 20' easement

SCALE: 1" = 30'
8/21/72
GMS

- LEGEND
- T.F. TOP FOUNDATION
 - PAD ELEVATION AT GARAGE
 - DOOR OPENING
 - STEP BRICK LEDGE
 - S.S. SANITARY SEWER
 - WTR. WATER LINE
 - FLOW ARROW
 - X.O.O. POINT ELEVATION
 - O.O.T.C. TOP CURB
 - O.O.W. WALK ELEVATION
 - O.O.I. TOP IRON
 - O.O.F. FINISH ELEVATION

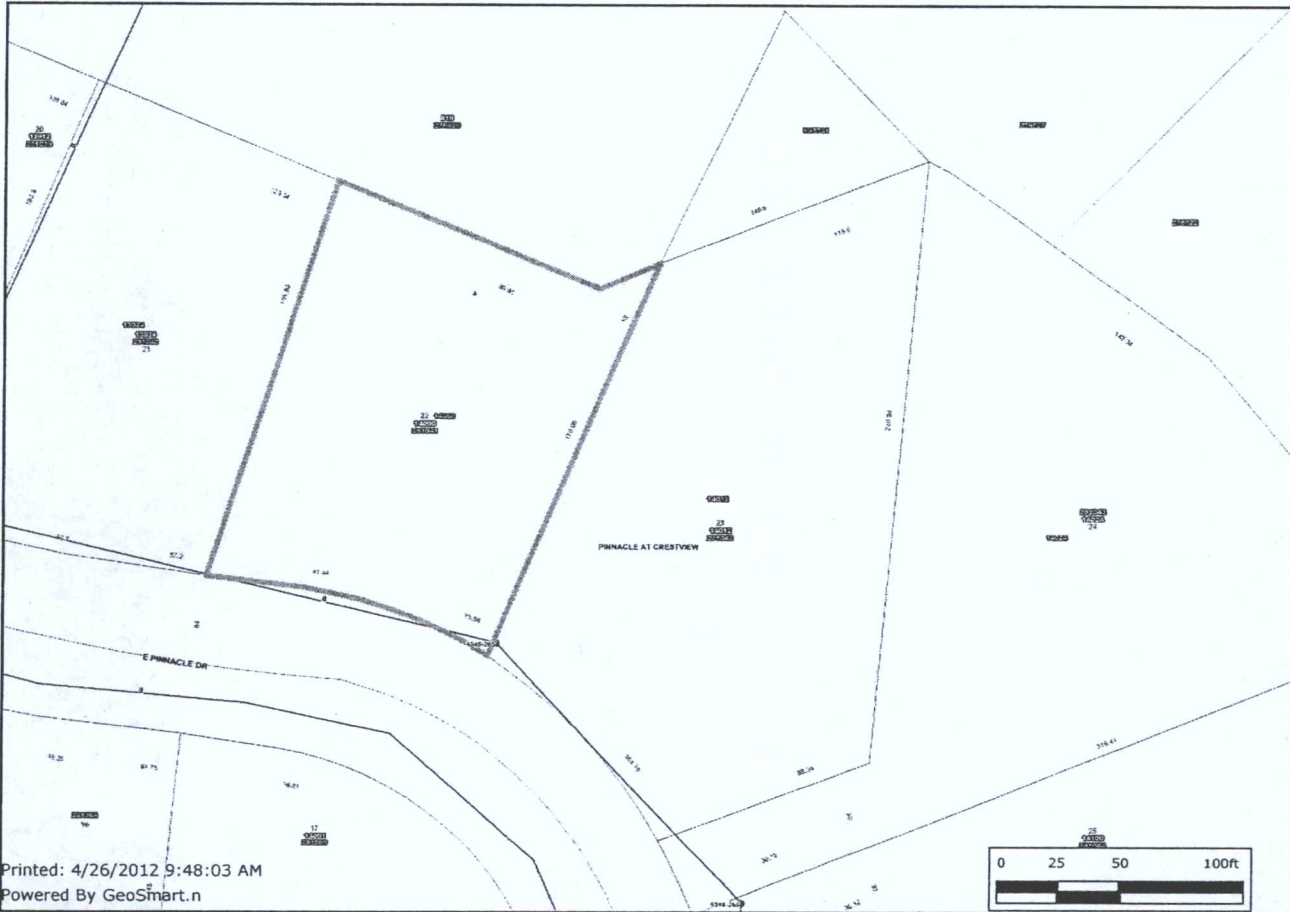
Min. Pad El. = 1319.0







WATER AND SEWER



Selected Features

- Sewer Manholes
- Property Parcels
- Lot Block
- Sewer Lines
- Water Lines Schematic

Roads

- State Highway
- US Federal Highway
- Interstate
- KTA
- Arterial
- Collector
- Minor
- Ramp
- Zoning Cases

Printed: 4/26/2012 9:48:03 AM
 Powered By GeoSmart.n



Every reasonable effort has been made to assure the accuracy of the maps and associated data provided herein. This information is provided with the understanding that the data are susceptible to a degree of error, and conclusions drawn from such information are the responsibility of the reader. The City of Wichita makes no warranty, representation or guaranty as to the content, accuracy, timeliness or completeness of any of the data provided herein. Some data provided here and used for the preparation of these maps has been obtained from public records not created or maintained by the City of Wichita. The City of Wichita shall assume no liability for any decisions made or actions taken or not taken by the reader in reliance upon any information or data furnished hereunder. The user should consult with the appropriate departmental staff member, e.g. Planning, Parks & Recreation, etc. to confirm the accuracy of information appearing in the visual presentations accessible through these web pages.

