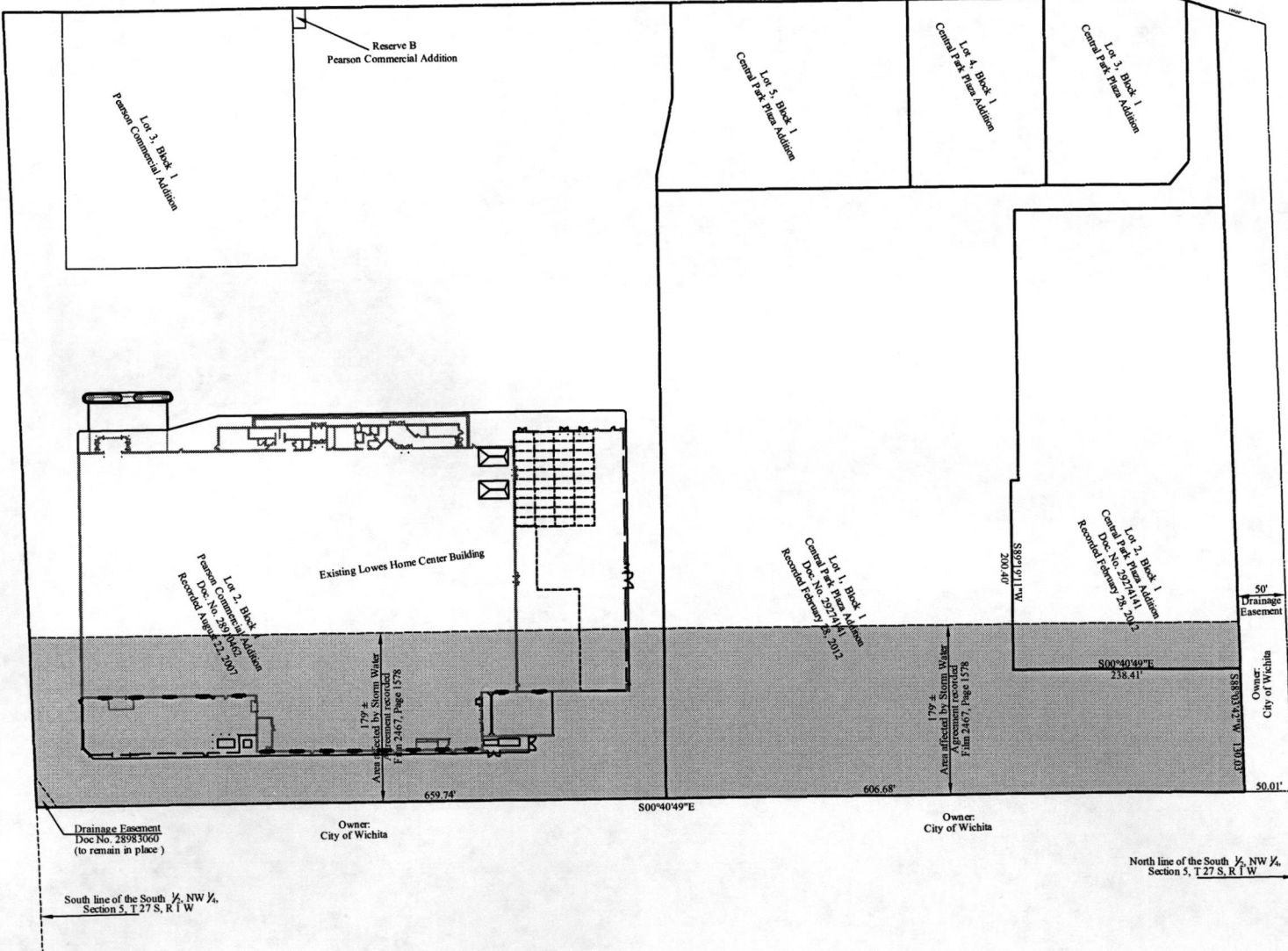


Drainage Easement to be Vacated



N. Maize Road
(140' Public R/W)



Description of Drainage Easement:
The South 1/2, NW 1/4, of Section 5, T 27 S, R 1 W of the 6th P.M., Sedgwick County, Kansas, except the West 730 feet thereof.

Description of portion to be vacated:
All that part of the South 1/2, NW 1/4, of Section 5, T 27 S, R 1 W of the 6th P.M., Sedgwick County, Kansas that has been platted as Central Park Plaza Addition (Recorded February 28th, 2012 as Doc. No. 29274141) and Pearson Commercial Addition (Recorded August 22, 2007 as Doc. No. 28910462).

zark
Civil Engineering Inc.
Bentonville • Kansas City

SCALE: Not to Scale	DATE: 3-19-12
DRAWN BY: RD	
CHECKED BY: EH	