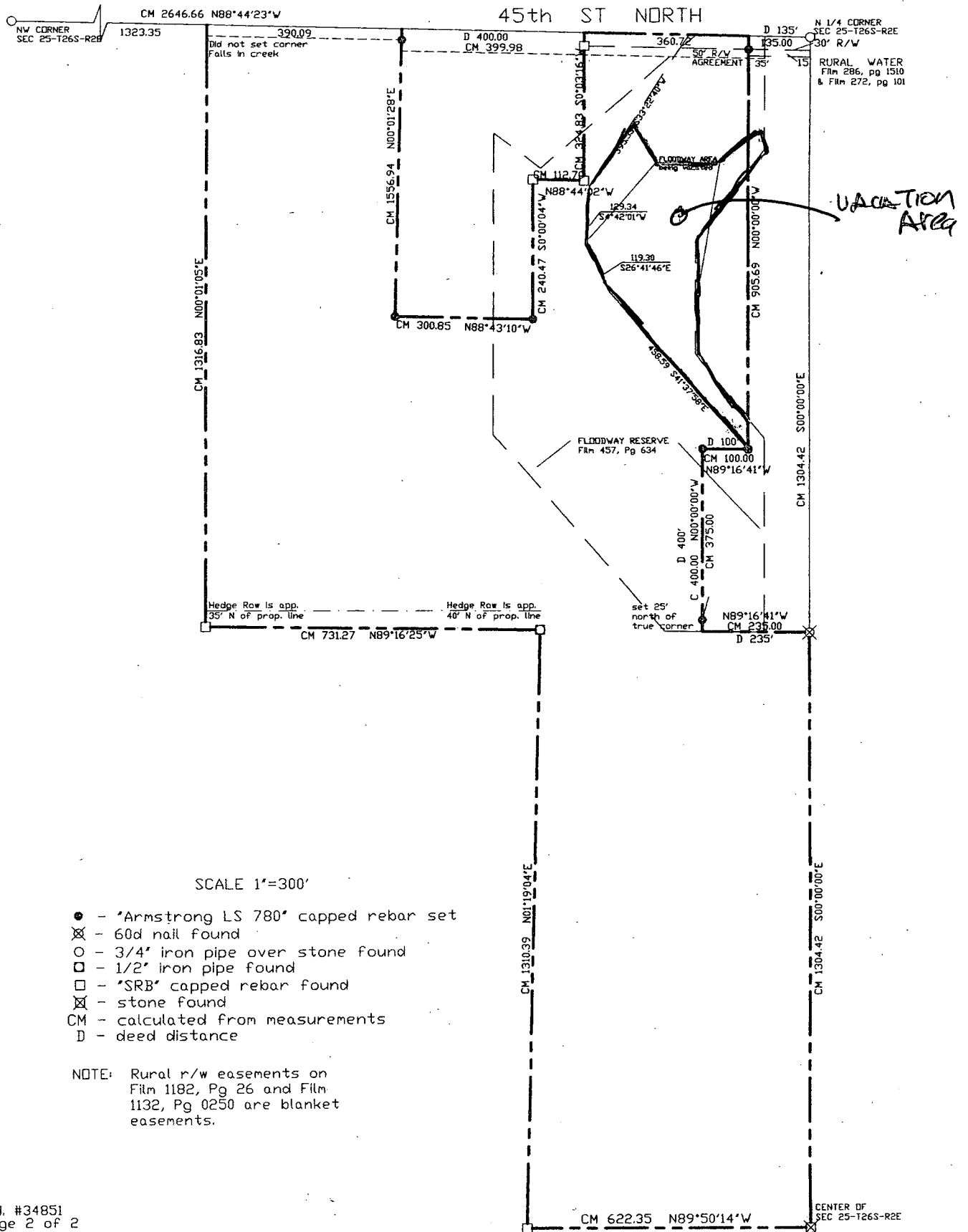


VAC 2012-24



SCALE 1"=300'

- - "Armstrong LS 780" capped rebar set
- ⊗ - 60d nail found
- - 3/4" iron pipe over stone found
- - 1/2" iron pipe found
- ◻ - "SRB" capped rebar found
- ⊠ - stone found
- CM - calculated from measurements
- D - deed distance

NOTE: Rural r/w easements on Film 1182, Pg 26 and Film 1132, Pg 0250 are blanket easements.