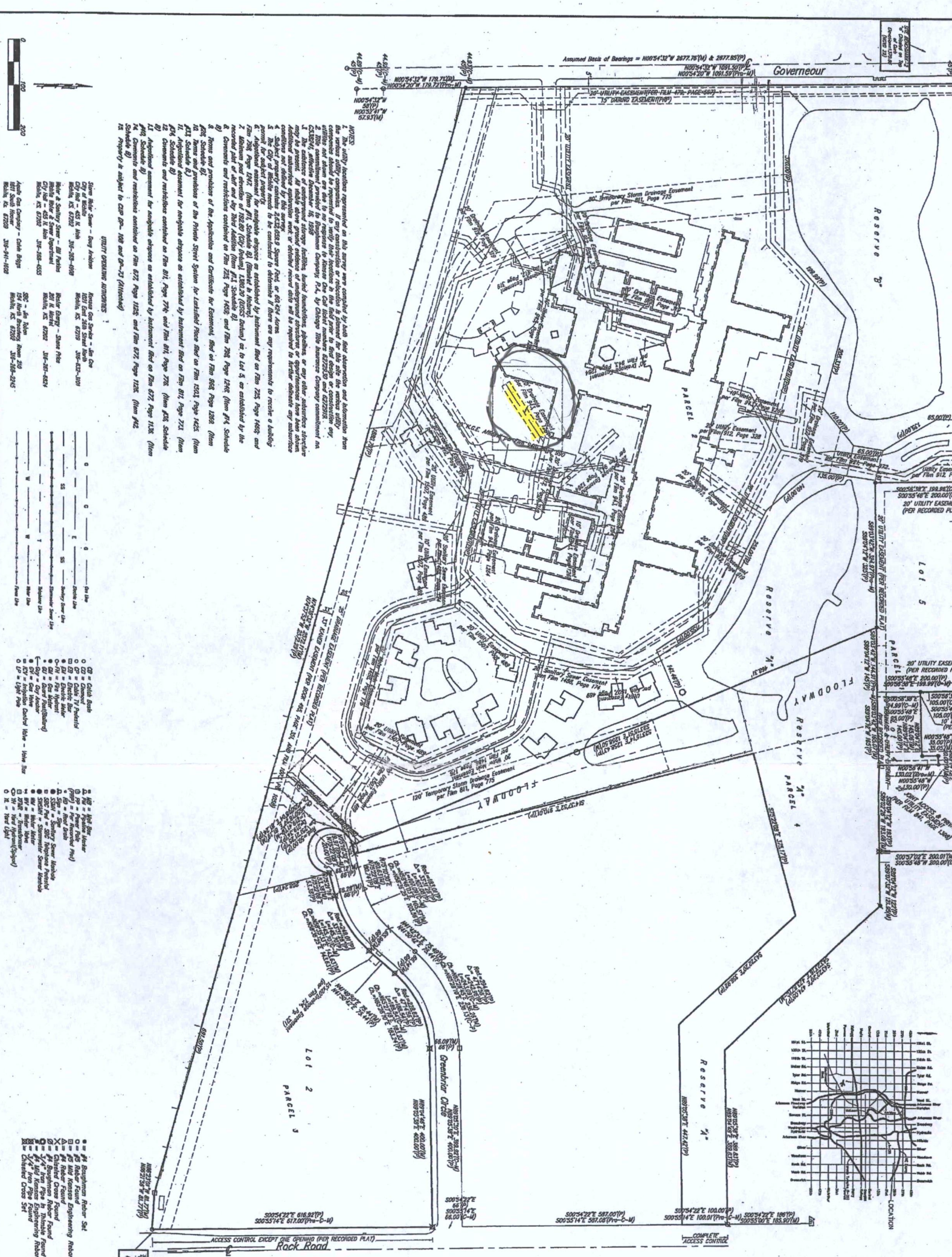


ALTA/ACSM Land Title Survey
Larkfield Place
7373 East 29th Street North, Wichita, Kansas



NOTES:

1. The utility locations represented on this survey were compiled by local utility departments and information from the utility companies. It is the responsibility of the utility companies to verify the accuracy of the utility locations.
2. The utility locations shown on this survey are not to be construed as a warranty of accuracy by the surveyor.
3. The utility locations shown on this survey are not to be construed as a warranty of accuracy by the surveyor.
4. The utility locations shown on this survey are not to be construed as a warranty of accuracy by the surveyor.
5. The utility locations shown on this survey are not to be construed as a warranty of accuracy by the surveyor.
6. The utility locations shown on this survey are not to be construed as a warranty of accuracy by the surveyor.
7. The utility locations shown on this survey are not to be construed as a warranty of accuracy by the surveyor.
8. The utility locations shown on this survey are not to be construed as a warranty of accuracy by the surveyor.
9. The utility locations shown on this survey are not to be construed as a warranty of accuracy by the surveyor.
10. The utility locations shown on this survey are not to be construed as a warranty of accuracy by the surveyor.
11. The utility locations shown on this survey are not to be construed as a warranty of accuracy by the surveyor.
12. The utility locations shown on this survey are not to be construed as a warranty of accuracy by the surveyor.
13. The utility locations shown on this survey are not to be construed as a warranty of accuracy by the surveyor.
14. The utility locations shown on this survey are not to be construed as a warranty of accuracy by the surveyor.
15. The utility locations shown on this survey are not to be construed as a warranty of accuracy by the surveyor.

- LEGEND:**
- 1" = 10' Scale
 - 2" = 20' Scale
 - 3" = 30' Scale
 - 4" = 40' Scale
 - 5" = 50' Scale
 - 6" = 60' Scale
 - 7" = 70' Scale
 - 8" = 80' Scale
 - 9" = 90' Scale
 - 10" = 100' Scale
 - 11" = 110' Scale
 - 12" = 120' Scale
 - 13" = 130' Scale
 - 14" = 140' Scale
 - 15" = 150' Scale
 - 16" = 160' Scale
 - 17" = 170' Scale
 - 18" = 180' Scale
 - 19" = 190' Scale
 - 20" = 200' Scale
 - 21" = 210' Scale
 - 22" = 220' Scale
 - 23" = 230' Scale
 - 24" = 240' Scale
 - 25" = 250' Scale
 - 26" = 260' Scale
 - 27" = 270' Scale
 - 28" = 280' Scale
 - 29" = 290' Scale
 - 30" = 300' Scale
 - 31" = 310' Scale
 - 32" = 320' Scale
 - 33" = 330' Scale
 - 34" = 340' Scale
 - 35" = 350' Scale
 - 36" = 360' Scale
 - 37" = 370' Scale
 - 38" = 380' Scale
 - 39" = 390' Scale
 - 40" = 400' Scale
 - 41" = 410' Scale
 - 42" = 420' Scale
 - 43" = 430' Scale
 - 44" = 440' Scale
 - 45" = 450' Scale
 - 46" = 460' Scale
 - 47" = 470' Scale
 - 48" = 480' Scale
 - 49" = 490' Scale
 - 50" = 500' Scale

LEGAL DESCRIPTION:

TO ALL PARTIES INTERESTED IN TITLE TO THE PREMISES SURVEYED

SURVEYOR'S CERTIFICATE:

I, **Frederick A. Stewart**, Surveyor, do hereby certify that this is a true and correct exhibit of said survey based on actual measurements where the monuments are of the character and occupy the positions as indicated.

This is to certify that this map or plot and the survey on which it is based were made in accordance with Minimum Standard Detail Requirements for ALTA/ACSM Land Title Surveys, jointly established and adopted by ALTA and NSPS in 2005, and includes Items 1, 2, 3, 4, 5, 7(a), 8, 9, 10, 11(a), 13 of Table A thereof. Pursuant to the accuracy standards as adopted by ALTA and NSPS and in effect on the date of this certification, undersigned further certifies that in my professional opinion, as a land surveyor registered in the state of Kansas, the relative positional accuracy of this survey does not exceed that which is specified in Item 13.

Frederick A. Stewart #1388
 Surveyor
 State of Kansas

BAUGHMAN
ALTA/ACSM Land Title Survey

LARKFIELD PLACE
7373 E. 29th St. No. Wichita, KS

Project: Larkfield Place
 Date: 10/15/2008
 Scale: As Shown
 Sheet: 1 of 1

BAUGHMAN
 1501 West 16th Street
 Wichita, KS 67203
 Phone: 316-261-1100
 Fax: 316-261-1101
 Website: www.baughman.com