



**Wichita-Sedgwick County Metropolitan Area Planning Department**

December 28, 2012

Mark Savoy  
433 S. Hydraulic  
Wichita KS 67211

Re: **VAC2012 -00039**- City request to vacate portions of platted access control, portions of access control dedicated by separate instrument and an easement dedicated by separate instrument; generally located northwest of the 21st Street North and Amidon Avenue intersection

Dear Sir or Madam:

At its regular meeting on Tuesday, December 18, 2012, the Wichita City Council considered the request. The action of the City Council was to APPROVE subject to the recommendation by the MAPC.

If you have any questions about this matter, please call 268-4494.

Sincerely,

Bill Longnecker  
Senior Planner

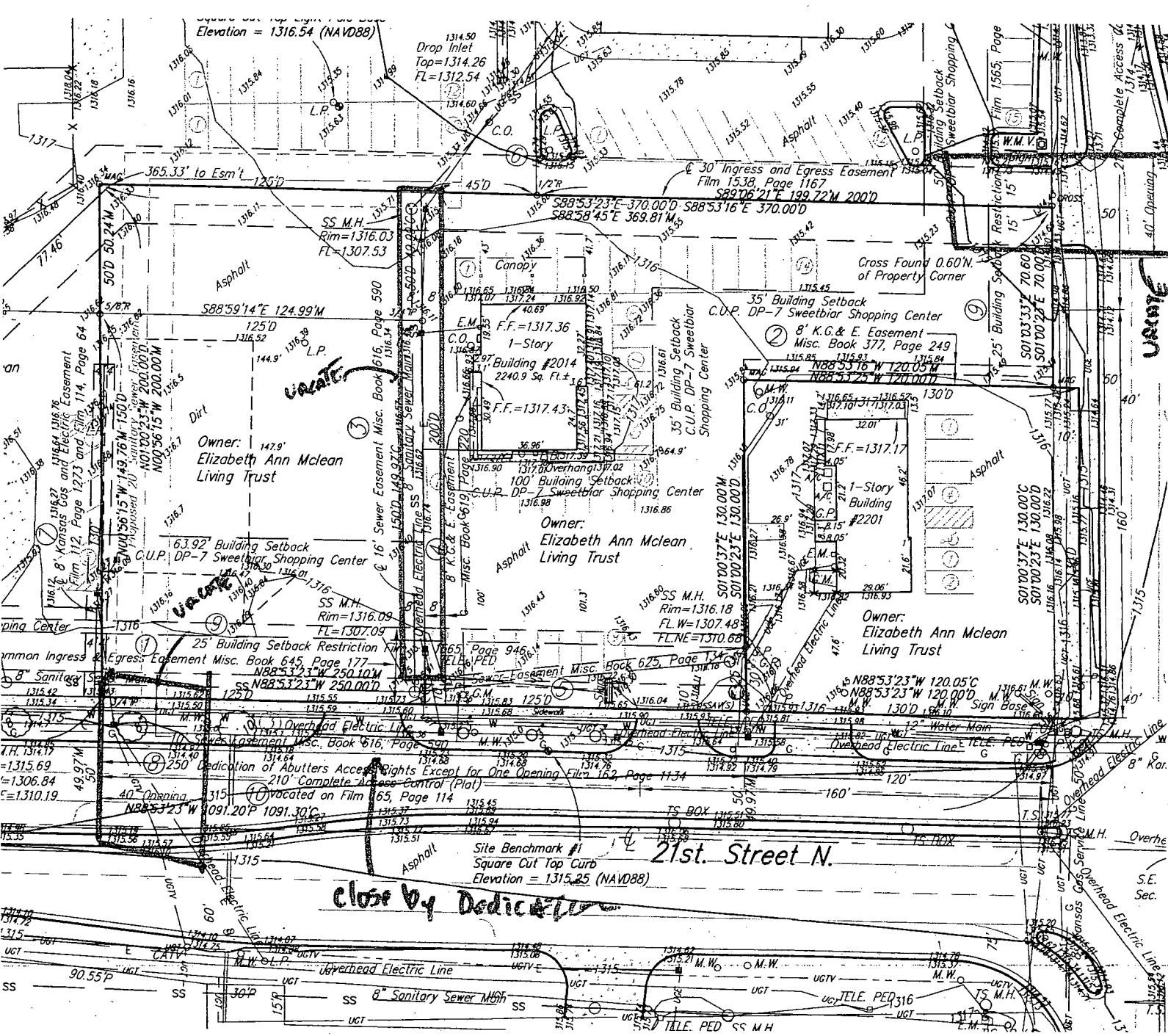
BL:le

cc: Gary Janzen, Interim City Engineer, Public Works Department, mailstop 1-71 (email)  
Carla Jones / Paul Gunzelman, Public Works Engineering, mailstop 1-71 (email)  
Julianne Kallman, Public Works Engineering, mailstop 1-71 (email)  
Aaron Henning, Public Works Engineering mailstop 1-82 (email)  
Terry Nicholas, Public Works Engineering, mailstop 1-82 (email)  
Donald Cradduck, Public Works Engineering, mailstop 1-81(email)  
Zongbin Zhao, Public Works Engineering, mailstop 1-82 (email)  
Kerry Gibson, Water & Sewer, mailstop 1-81 (email)  
Elizabeth Anna McLean Living Trust, 3820 S. Seneca, Wichita KS 67217  
Reyes Investments, LLC, 2160 W. 21<sup>st</sup> North, Wichita KS 67204  
BTC Properties Inc., 8859 Long St., Lenexa KS 66215

City Hall • 10th Floor • 455 North Main • Wichita, Kansas 67202-1688

T 316.268.4421 F 316.268.4390

www.wichita.gov



Elevation = 1316.54 (NAVD88)

Owner:  
Elizabeth Ann Mclean  
Living Trust

Owner:  
Elizabeth Ann Mclean  
Living Trust

Owner:  
Elizabeth Ann Mclean  
Living Trust

Site Benchmark #1  
Square Cut Top Curb  
Elevation = 1315.25 (NAVD88)

21st. Street N.

close by Dedication

