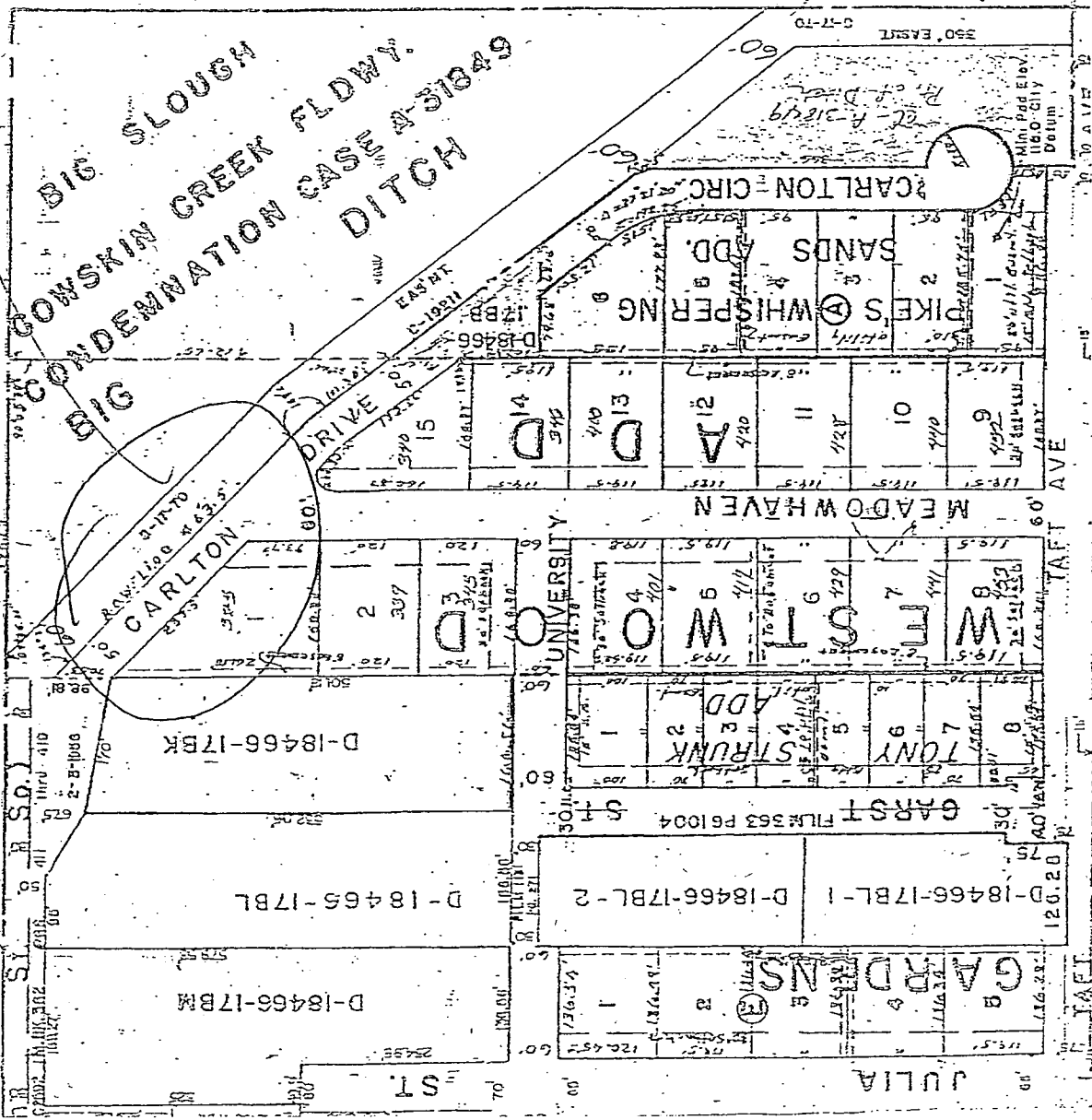


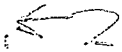
DE 105

TWP 27 R 1W

SITE

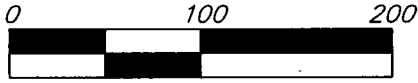


UN 2012-42

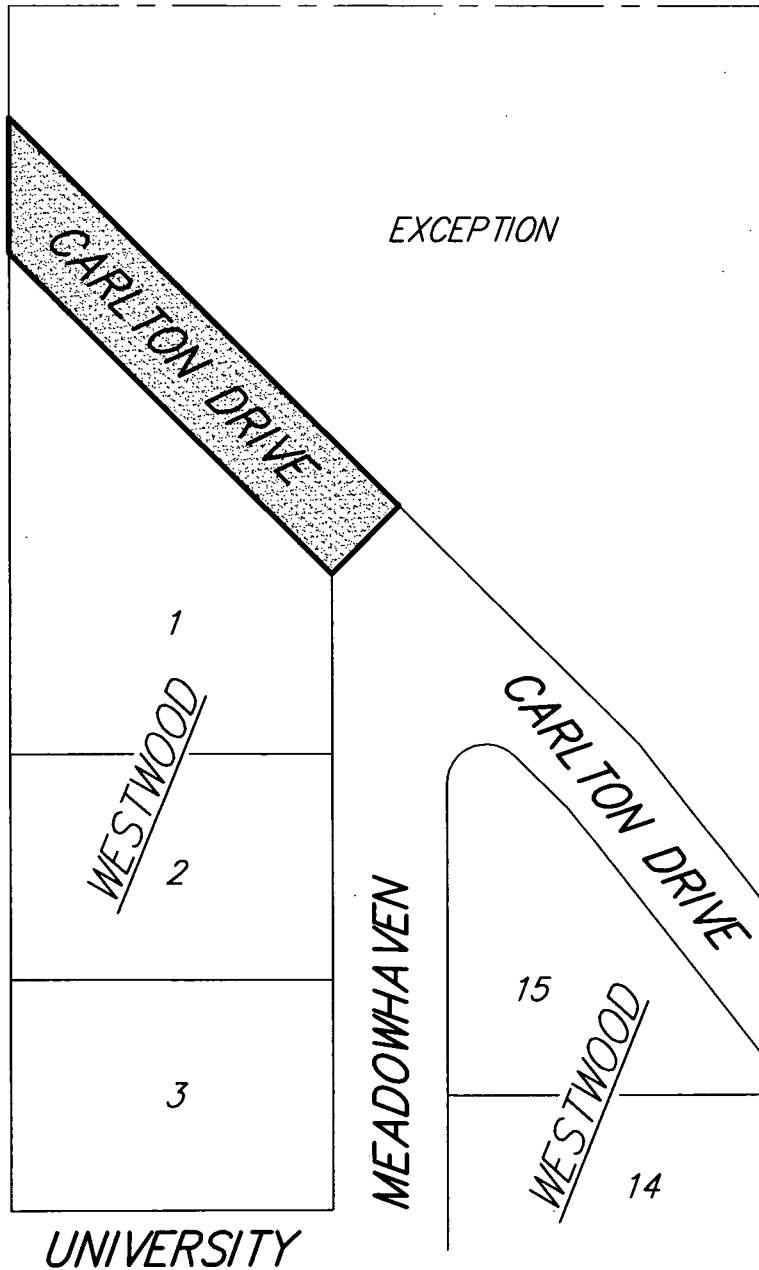


EXHIBIT

PART OF CARLTON DRIVE IN WESTWOOD WICHITA, SEDGWICK COUNTY, KANSAS



INDICATES AREA OF LEGAL DESCRIPTION FOR STREET VACATION



8 NOV 2012

 **Baughman Company, P.A.**
315 Ellis St. Wichita, KS 67211 P 316-262-7271 F 316-262-0149
Baughman ENGINEERING | SURVEYING | PLANNING | LANDSCAPE ARCHITECTURE