



Wichita-Sedgwick County Metropolitan Area Planning Department

September 12, 2013

Greg D. Robson
7920 W. 21st Street Ste 200
Wichita, KS, 67205

Re: VAC2012-00048 - Request to vacate a portion of a platted lot; generally located north of 21st Street North, on the east side of 135th Street West, on the northeast side of Forest View Street (3-mile ring).

Dear Mr. Robson:

Your request to vacate the above referenced portion of a platted lot was **approved** by the Wichita City Council at its September 10, 2013, meeting. It was subsequently **approved** by the Sedgwick County Board of County Commissioners at its September 11, 2013, meeting. Should you have any questions, please feel free to call me at 268-4421.

Sincerely,

Bill Longnecker
Senior Planner

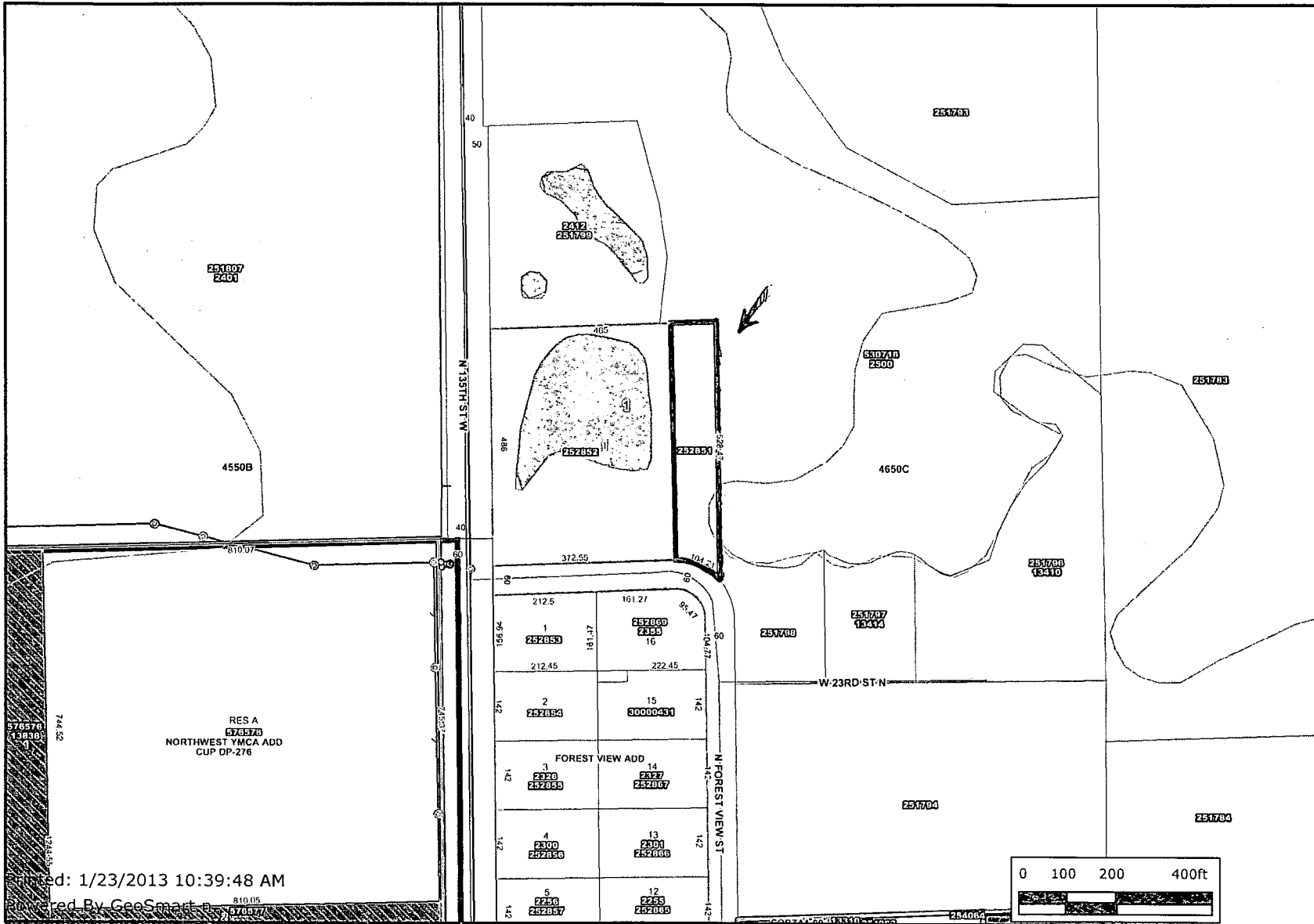
BL:kw

cc: Bob Parnacott – Assistant County Counselor (e-mail)
Jim Weber - Sedgwick County Public Works Engineer (e-mail)
Kelly Dixon - MABCD (e-mail)



vac2012-48

water & sewer



- Selected Features
- McConnell AOI
- Sewer Manholes
- Sewer Observation Manholes
- Hydrant Schematic
- Water Valve Schematic
- City Limit Boundaries
- Historic Districts
- Old Town Delano Overlay District
- NO
- YES
- SS Main BD District
- Property Parcels
- Lot Block
- Subdivisions
- Sewer Flow
- Sewer Lines
- Water Lines Schematic
- Roads**
 - State Highway
 - US Federal Highway
 - Interstate
 - KTA
 - Arterial
 - Collector
 - Minor
 - Ramp
 - Railroads
 - Quarter Section

Printed: 1/23/2013 10:39:48 AM

Created By: GeoSmart



Every reasonable effort has been made to assure the accuracy of the maps and associated data provided herein. This information is provided with the understanding that the data are susceptible to a degree of error, and conclusions drawn from such information are the responsibility of the reader. The City of Wichita makes no warranty, representation or guaranty as to the content, accuracy, timeliness or completeness of any of the data provided herein. Some data provided here and used for the preparation of these maps has been obtained from public records not created or maintained by the City of Wichita. The City of Wichita shall assume no liability for any decisions made or actions taken or not taken by the reader in reliance upon any information or data furnished hereunder. The user should consult with the appropriate departmental staff member, e.g. Planning, Parks & Recreation, etc. to confirm the accuracy of information appearing in the visual presentations accessible through these web pages.

