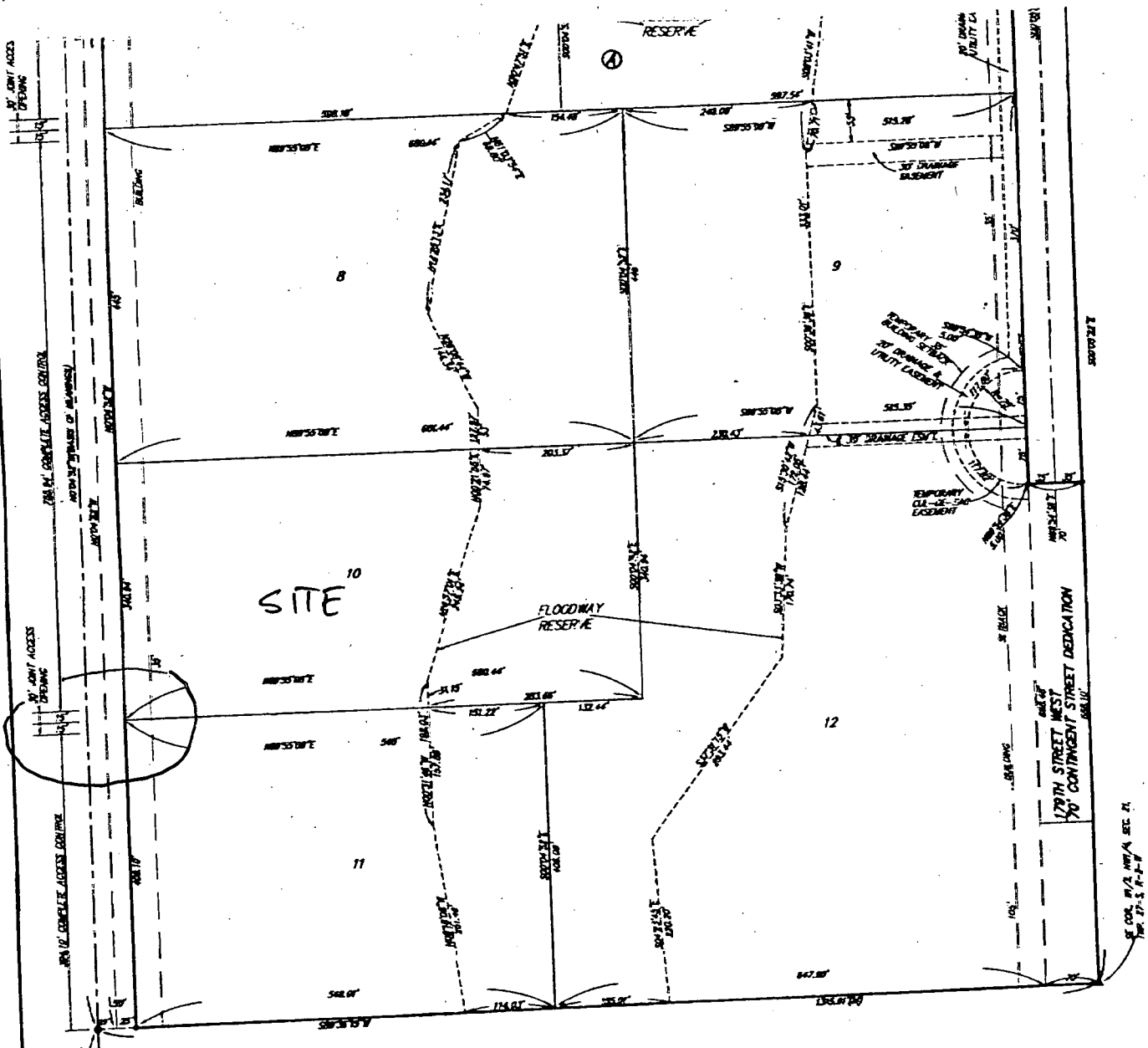


VAC201305

PC 119-10



MINIMUM BUILDING FINISH ELEVATIONS FOR LOWEST OPENING TO THE STRUCTURES

LOT	BLOCK	ELEVATION
2	A	147.0
3	A	147.0
4,5	A	146.0
6,7	A	145.0
8	A	147.0
9	A	147.0
10,11,12	A	148.0

* - IN REAR BY "TRUCKWAY" C/P (DET)
 ** - 3" - 4" HIGH (FOUNDED)
 ○ - IN REAR (FOUNDED)
 Δ - SIDE (FOUNDED)

(M) - MEASURED
 (D) - DESCRIBED
 (C-D) - CALCULATED PER DESCRIBED INFO

BENCHMARK
 50' N 89° 14' E, 25' E, & 25' N, OF
 NEW COR. HWY/A, SEC. 21, TWP. 27-S,
 R-2-E OF THE 9TH P.M.
 ELEV. - 1402.81 MCHD

NOTE:
 A MASTER GRADING PLAN FOR DRAINAGE HAS BEEN DEVELOPED FOR THIS SUBDIVISION AND IS ON FILE WITH THE CITY OF WICHITA, KANSAS. ALL DRAINAGE EASEMENTS, RIGHTS-OF-WAY, OR RESERVES SHALL REMAIN AT ESTABLISHED GRADES OR AS MODIFIED WITH THE APPROVAL OF THE CITY ENGINEER OF THE CITY OF WICHITA, KANSAS. NO OBSTRUCTIONS WHICH IMPED THE FLOW OF THIS DRAINAGE SYSTEM SHALL BE ALLOWED.

200
12

Reviewed in accordance with K.S.A. 58-2005 on this 24th day of August, 2000.

Tricia L. Robella
 Tricia L. Robella, L.S. #1246
 Deputy County Surveyor
 Sedgwick County, Kansas

Entered on transfer record this 1st day of November, 2000.

James Alfred
 James Alfred
 County Clerk

JUDITH M. T.
 Public Notary
 My Exp. 2-28-01

above described ADDITION, Sedgwick

State of Kansas
 Sedgwick County
 for me, this 24th day of August, 2000

BURAN K. MO
 Public Notary
 My Exp. 1-1-01

County, Kansas
 Wichita-Sedgwick
 Kansas
 Dated this 24th day of August, 2000



shown hereon Kansas, this 24th day of August, 2000



shown hereon Sedgwick Co



State of Ks
 Sedgwick Co
 filed for rec
 of November



BEFORE THE COUNTY COMMISSIONERS
OF SEDGWICK COUNTY, KANSAS

IN THE MATTER OF THE VACATION OF A)
PORTION OF PLATTED ACCESS CONTROL)

GENERALLY LOCATED ON THE EAST SIDE OF)
183RD STREET WEST, MID-MILE BETWEEN)
MAPLE STREET AND 4TH STREET NORTH)

CASE NO. VAC2013-00005

VACATION ORDER

NOW on this 12th day of June, 2013, at 9:00 o'clock A.M., comes the petition filed by James H. & Jacquelyn Stearns (owners), praying for the vacation of the following-described portion of platted access control, to-wit:

Vacation of complete access control across the south 50 feet of the north 175 feet of the west line of Lot 10, Block A, Eck 6th Addition, to allow one 20-foot wide drive.

WHEREUPON, it is shown that proper notice has been given by publication once at least 20 days prior to the date of hearing in the official county newspaper, such publication having occurred on, February 28, 2013; and it is further shown that proper proof of such publication has been filed herein. The Board finds that such notice is in lawful form and that it conforms to K.S.A. 58-2613, and amendments thereto.

THEREAFTER, the Board, being duly advised in the premises, finds and determines that no private rights will be injured or endangered by such vacation; that the public will suffer no loss or inconvenience thereby; that no written objections hereto have been filed with the Sedgwick County Clerk; and that, in justice to the petitioner, the petition's prayer should be granted.

The Board further finds that the Metropolitan Area Planning Commission held a public hearing on the 21st day of March 2013, and recommended that the vacation petition herein be approved.

THEREFORE, IT IS ORDERED BY THE BOARD OF COUNTY COMMISSIONERS OF SEDGWICK COUNTY, KANSAS, that the portion of the platted access control, hereinabove described be the same and is hereby vacated. It is further ordered that County Clerk shall certify a copy of this order to the Register of Deeds of Sedgwick County.

DATED this _____ day of _____.

**BOARD OF COUNTY COMMISSIONERS
OF SEDGWICK COUNTY, KANSAS**

James B. Skelton, Chairman
Fifth District

ATTEST:

Kelly B. Arnold, County Clerk

APPROVED AS TO FORM:



Robert W. Parnacott
Assistant County Counselor