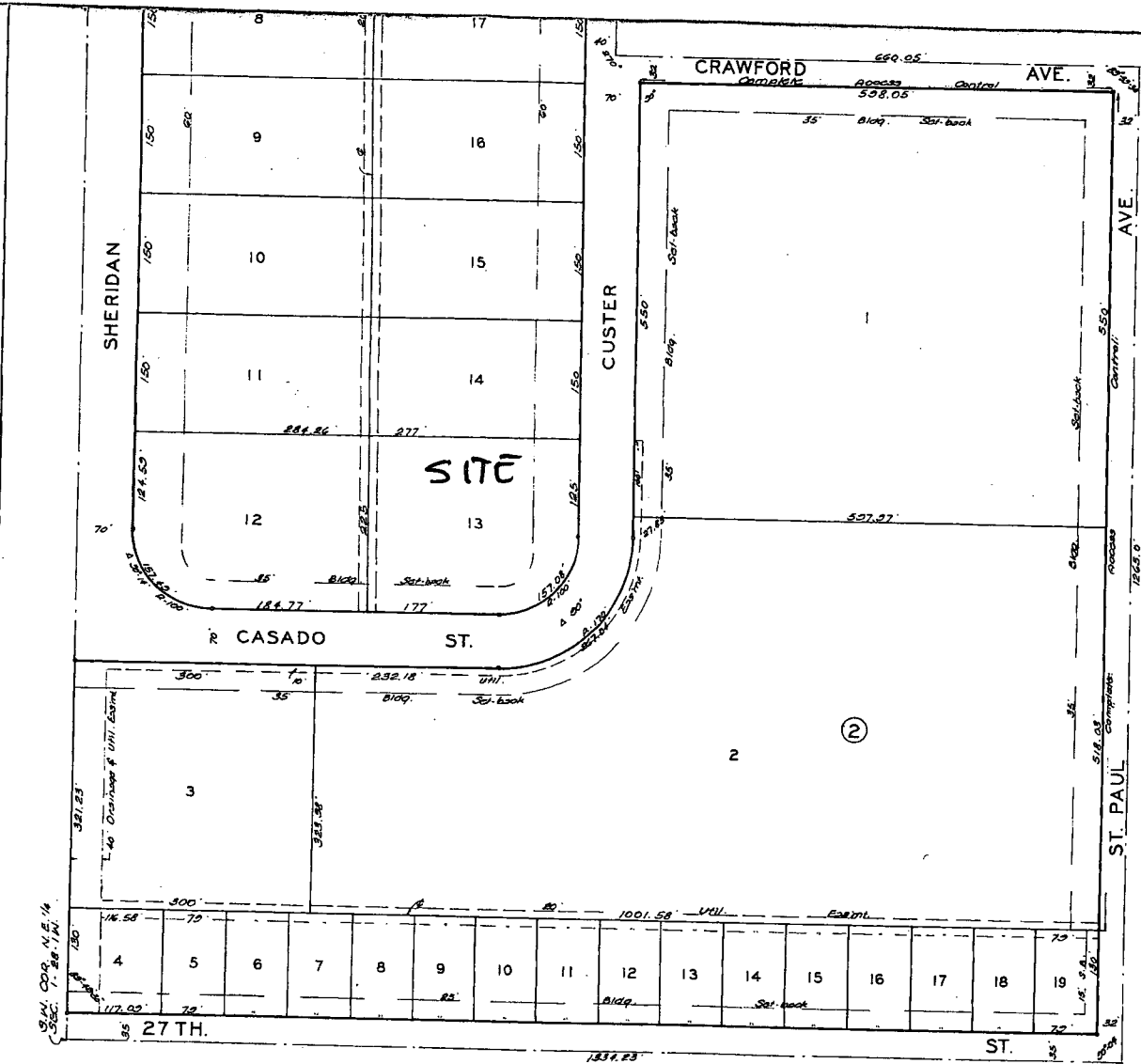


VAC 2013-28



Entered on transfer record
 this 7 day of January 1978
 # 39613
 Marie Warden County Clerk

State of Kansas,
 Sedgewick County, ss. This is to certify that this
 plat was filed for record in the office of
 the Register of Deeds this 9th day of
 January 1978 at 3:00 o'clock P.M. and is
 duly recorded.

John H. Hill Register of Deeds
 Carl O. Gilbert Deputy



5-2-8-23

Comments and Restrictions F 691 A 596





vac2013-28

2011 development



Selected Features

Attractions

- ★ Airport
- ★ City Highlight
- ★ College/University
- ★ Fire Station
- ★ Government
- ★ Health
- ★ Environmental Services
- ★ Hospital
- ★ Post Office
- ★ Public Golf
- ★ Public Library
- ★ Wichita Transit
- ★ Wichita Police Station
- ★ Wichita Community Police Station

City Limit Boundaries

Paths

- ⚡ Bike Path
- ⚡ 3 ft Sidewalk
- ⚡ 4 ft Sidewalk
- ⚡ 5 ft Sidewalk
- ⚡ 6 ft Sidewalk
- ⚡ 7 ft Sidewalk
- ⚡ 8 ft Sidewalk
- ⚡ CBD Sidewalk
- ⚡ Funded Bike Path
- ⚡ Proposed Bike Path
- ⚡ Unpaved Trail

Historic Districts

Old Town Delano Overlay District

Property

NO
YES

Printed: 8/7/2013 10:02:52 PM
 Powered By GeoSmart



Every reasonable effort has been made to assure the accuracy of the maps and associated data provided herein. This information is provided with the understanding that the data are susceptible to a degree of error, and conclusions drawn from such information are the responsibility of the reader. The City of Wichita makes no warranty, representation or guaranty as to the content, accuracy, timeliness or completeness of any of the data provided herein. Some data provided here and used for the preparation of these maps has been obtained from public records not created or maintained by the City of Wichita. The City of Wichita shall assume no liability for any decisions made or actions taken or not taken by the reader in reliance upon any information or data furnished hereunder. The user should consult with the appropriate departmental staff member, e.g. Planning, Parks & Recreation, etc. to confirm the accuracy of information appearing in the visual presentations accessible through these web pages.

