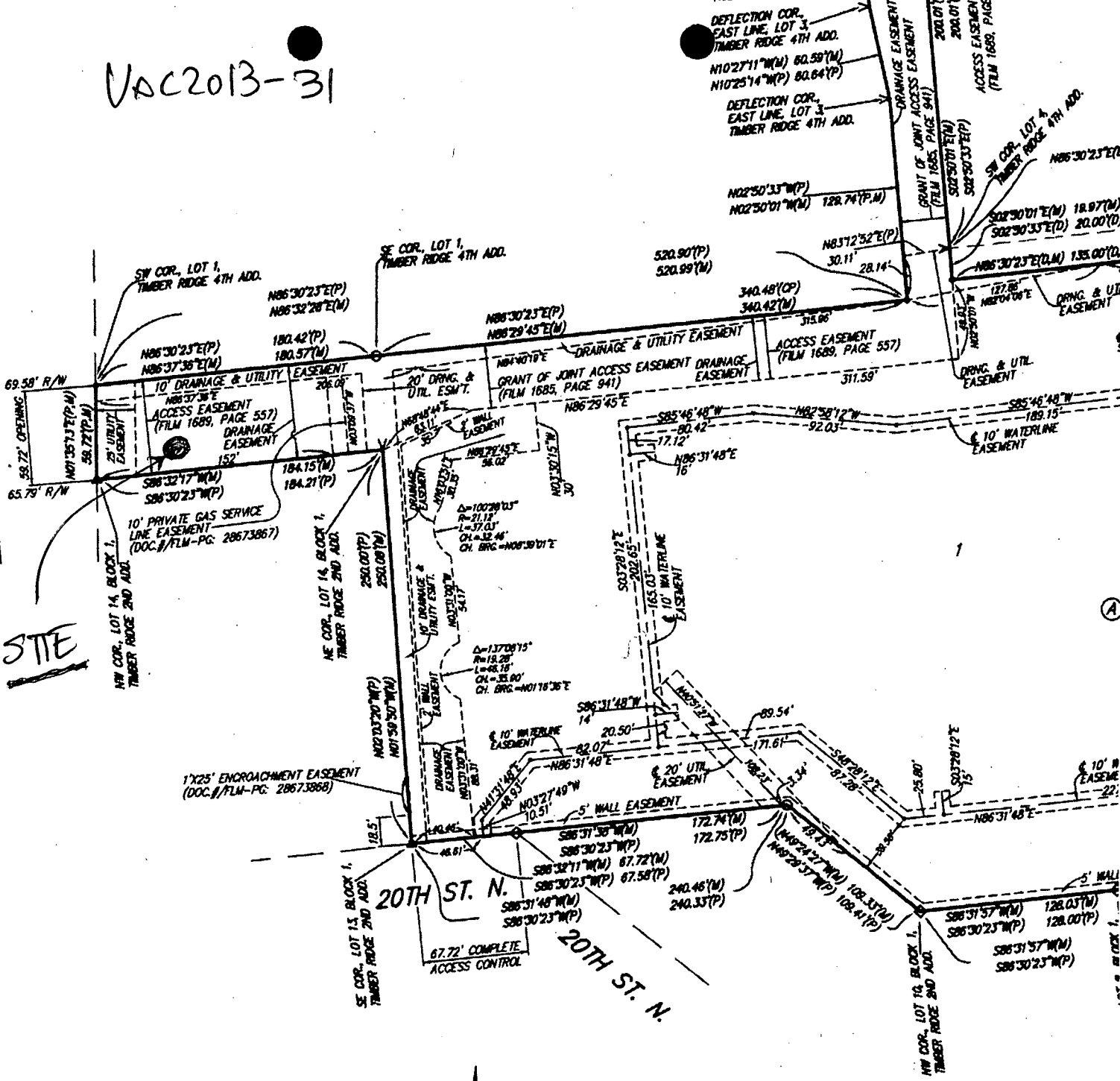


VAC2013-31

MAIZE RD.



STE

- = #4 REBAR W/ "BAUGHMAN" CAP (SET)
- △ = #4 REBAR W/ "BAUGHMAN" CAP (FOUND)
- = #4 REBAR (FOUND)
- ◇ = #4 REBAR W/ "SRB" CAP (FOUND)
- ▽ = "V" NOTCH (FOUND)
- ▽ = "V" NOTCH (SET)

- (M) = MEASURED
- (P) = PLATTED
- (D) = DESORDED
- (CP) = CALCULATED PER PLATTED INFO.



NOTE: A drainage plan has been developed for this subdivision and is on file with the City of Wichita, Kansas. Drainage intent shall remain as depicted or as modified with the approval of the City Engineer of the City of Wichita, Kansas. No obstructions which impede the flow of this drainage plan shall be allowed.

NOTE: ADDITIONAL BUILDING SETBACK REQUIREMENTS AND RESTRICTIONS PER COMMUNITY UNIT PLAN DP-197.



vac2013-31

2011 development



- Selected Features
- Sewer Manholes
- Sewer Observation Manholes
- Hydrant Schematic
- Water Valve Schematic
- Water Node Schematic
- City Limit Boundaries
- Old Town Delano Overlay District
- NO
- YES
- Property Parcels
- Lot Block
- Subdivisions
- Sewer Flow
- Sewer Lines
- Water Lines Schematic
- Roads**
- State Highway
- US Federal Highway
- Interstate
- KTA
- Arterial
- Collector
- Minor
- Ramp
- Railroads
- Quarter Section
- Waterways
- Streams

Printed: 8/29/2013 9:38:42 AM
 Powered By GeoSmart.n



Every reasonable effort has been made to assure the accuracy of the maps and associated data provided herein. This information is provided with the understanding that the data are susceptible to a degree of error, and conclusions drawn from such information are the responsibility of the reader. The City of Wichita makes no warranty, representation or guaranty as to the content, accuracy, timeliness or completeness of any of the data provided herein. Some data provided here and used for the preparation of these maps has been obtained from public records not created or maintained by the City of Wichita. The City of Wichita shall assume no liability for any decisions made or actions taken or not taken by the reader in reliance upon any information or data furnished hereunder. The user should consult with the appropriate departmental staff member, e.g. Planning, Parks & Recreation, etc. to confirm the accuracy of information appearing in the visual presentations accessible through these web pages.

