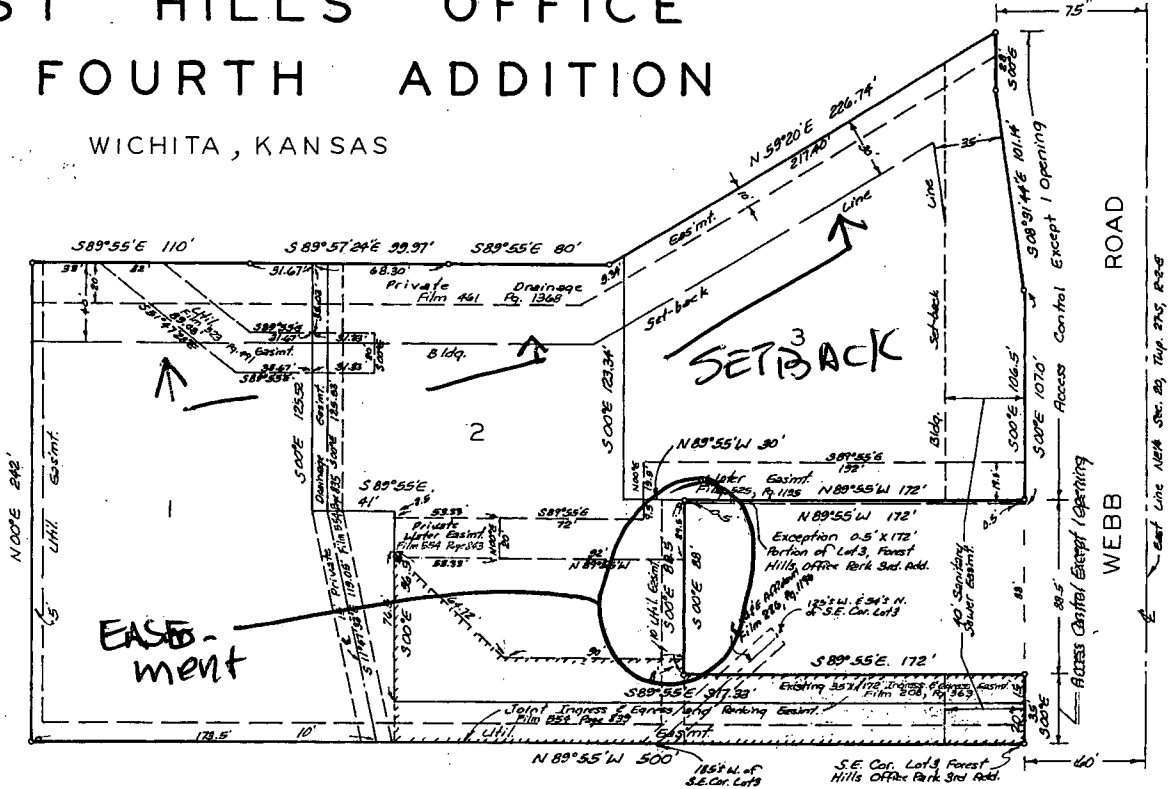


FOREST HILLS OFFICE PARK FOURTH ADDITION

WICHITA, KANSAS

VAC2013-3S

N
1" = 50'
0 = iron
Minimum Road Elevation
171.0 City of Arkan



State of Kansas & S.S. We, Baughman Company, P.A., Surveyors in aforesaid county and state do hereby certify that we have surveyed and platted "FOREST HILLS OFFICE PARK FOURTH ADDITION", Wichita, Kansas and that the accompanying plat is a true and correct exhibit of the property surveyed, described as and being a replat of Lot 3, Forest Hills Office Park Third Addition, Wichita, Sedgewick County, Kansas, except that part described as commencing at the southern most S.E. Corner of said Lot 3; thence North, along the east line of said Lot 3 and extended, 123 feet for a place of beginning; thence N89°55'W, 172 feet; thence N00°E, 0.5 feet; thence S89°55'E, 172 feet; thence S00°W, 0.5 feet to the place of beginning. Easements being vacated by virtue of K.S.A. 12-512(b). All being situated in the NE1/4 of Sec. 20, Twp. 27-S, R-2-E.

Baughman Company, P.A.

William L. Korber Surveyor
William L. Korber

This plat of "FOREST HILLS OFFICE PARK FOURTH ADDITION", Wichita, Kansas, has been submitted to and approved by the Wichita Sedgewick County Metropolitan Area Planning Commission, Wichita, Kansas. Dated this 1st day of July, 1982. Wichita-Sedgewick County Metropolitan Area Planning Commission.

James L. Gardner II Chairman
Robert A. Lakin Secretary

This plat approved and all dedications shown hereon accepted by the Board of Commissioners of the City of Wichita, Kansas, this 16th day of NOV 1982.

Gilbert J. Jirak Mayor
Donald E. Givick City Clerk

This plat approved and all dedications shown hereon accepted by the Board of Commissioners Sedgewick County, Kansas, this 1st day of DECEMBER 1982.

Tom Scott Chairman
Tom Scott Commissioner

Donald E. Givick Commissioner
Dorothy K. White County Clerk
Dorothy K. White

Entered on transfer record this 1st day of DECEMBER 1982.

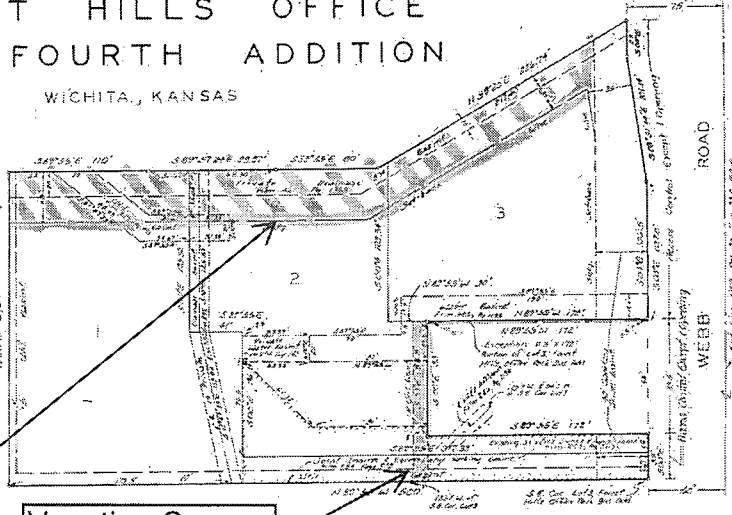
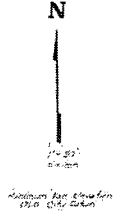


Know, all men by these presents that we, the undersigned, have caused the land described in the surveyors certificate to be platted into lots to be known as "FOREST HILLS OFFICE PARK FOURTH ADDITION", Wichita, Kansas. The utility easements are hereby granted as indicated for the construction and maintenance of all public utilities. All abutters rights of Access to or from Webb Rd, over and across the east line of Lots 1, 2 and 3 are hereby granted to the City of Wichita, provided however that Lots 1 and 2 shall have Access to Webb Rd at 1 joint point and that Lot 3 shall have Access to Webb Rd at 1 point, all as shall be determined

FOREST HILLS OFFICE PARK FOURTH ADDITION

WICHITA, KANSAS

K-1 5-27
K-1 5-27



Vacation Case

Vacation Case

State of Kansas, ss. We, Beaughman Company, P.A., Surveyors in and for said county and state do hereby certify that we have surveyed and plotted FOREST HILLS OFFICE PARK FOURTH ADDITION, Wichita, Kansas and that the accompanying plat is a true and correct exhibit of the property surveyed, described as and being a replat of Lot 3, Forest Hills Office Park Fourth Addition, Wichita, Sedgewick County, Kansas except that part described as commencing at the southern most, S.E. Corner of said Lot 3; thence North along the east line of said Lot 3 and extended 122 feet to a place of beginning; thence N88°54' 102 feet thence N88°54' 102 feet thence S89°52' 102 feet thence S89°52' 102 feet to the place of beginning. All being situated in the NE1/4 of Sec. 20, Twp 27-S, R.2-E.

Beaughman Company, P.A.

Surveyor



Know all men by these presents that we, the undersigned, have acquired the land described in the surveys certificate to be plotted on this plat in the FOREST HILLS OFFICE PARK FOURTH ADDITION, Wichita, Kansas. The utility easements are hereby granted as indicated for the construction and maintenance of all public utilities. All easements right of access to or from which be over and across the east line of Lot 1, 2 and 3 are hereby granted to the City of Wichita, provided however that lots 1 and 2 shall have access to Webb Rd at 1 point and that lot 3 shall have access to Webb Rd at 1 point, all as shall be determined by the City Engineer of the City of Wichita, Kansas. No structure shall be constructed below a minimum pad elevation of 1160 City Datum.

James B. Boyd Surveyor

The City of Wichita, a Municipal Corporation.
Mayor
City Clerk

State of Kansas, ss. This instrument acknowledged before me, this 15th day of August, 1927, by James B. Boyd and James A. Boyd Notarially.



This plat of FOREST HILLS OFFICE PARK FOURTH ADDITION, Wichita, Kansas, has been submitted to and approved by the Wichita, Sedgewick County Metropolitan Area Planning Commission, Wichita, Kansas. Dated this 15th day of August, 1927. Chairman
Secretary

This plat approved and all dedications shown hereon accepted by the Board of Commissioners of the City of Wichita, Kansas, this 15th day of August, 1927.
Mayor
City Clerk

This plat approved and all dedications shown hereon accepted by the Board of Commissioners, Sedgewick County, Kansas, this 15th day of August, 1927.
Chairman
Commissioner
County Clerk

Entered on transfer record this 15th day of August, 1927.
Register of Deeds

State of Kansas, ss. This is to certify that this plat has been filed for record in the office of the Register of Deeds, this 15th day of August, 1927, at 11:30 o'clock A.M.; and is duly recorded.
Register of Deeds

State of Kansas, ss. This instrument acknowledged before me, this 15th day of August, 1927, by James B. Boyd and James A. Boyd, City Clerk of the City of Wichita, a Municipal Corporation.
Notary Public

Aug. 5th SE
SEPT 12th Sub.
OCT. 22nd MAPC

