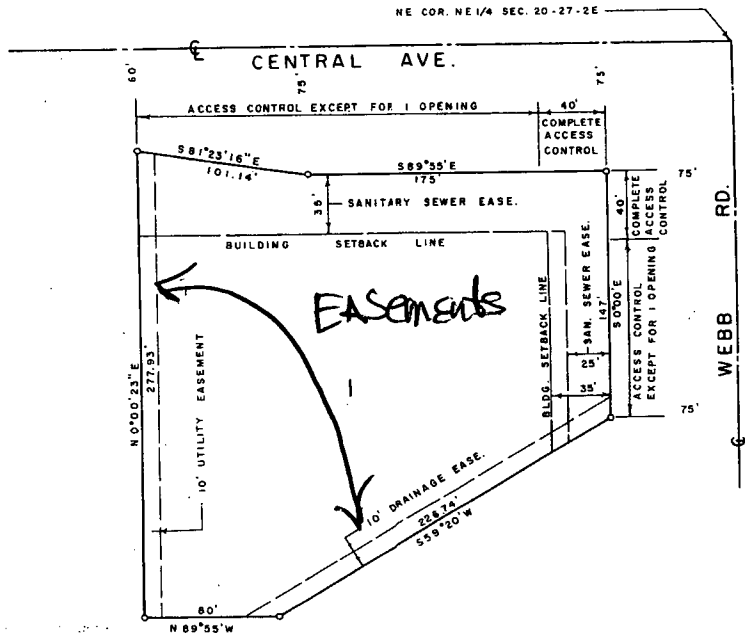


VAC 2013-34



State of Kansas, County of Sedgwick, SS.

I, Lowell D. High, Land Surveyor in said State and County do hereby certify that I have surveyed and platted "FOREST HILLS OFFICE PARK SECOND ADDITION", Wichita, Sedgwick County, Kansas and that the accompanying plat is A REPLAT OF Forest Hills Office Park, Wichita, Sedgwick County, Kansas and part of Forest Park Shops, an Addition to Wichita, Kansas and a true and correct exhibit of said survey described as follows: All of Lot 1, Forest Hills Office Park, Wichita, Sedgwick County, Kansas and part of Lot 2, Forest Park Shops, an Addition to Wichita, Kansas, described as follows: Beginning at the NW corner of said Lot 1, Forest Hills Office Park, Wichita, Sedgwick County, Kansas, thence S0°00'00"E along the west line of said Lot 1, 263.94 feet to the SW corner of said Lot 1 in said Forest Hills Office Park; thence N89°55'W, 80 feet; thence north 277.93 feet to a point on the north line of said Lot 2 in said Forest Park Shops, 210 feet east of the NW corner of said Lot 2; thence southeasterly on said north line of said Lot 2, 80.88 feet to the point of beginning.

Lowell D. High, Land Surveyor  
 Lowell D. High 10-15-80



Know all men by these presents that FlightSafety International, Inc., by A. L. Ueltschi, President, has caused the land described in the Land Surveyor's certificate to be platted into a lot to be known as "FOREST HILLS OFFICE PARK SECOND ADDITION", Wichita, Sedgwick County, Kansas.

Sanitary sewer easements as indicated on the plat are hereby granted for the construction and maintenance of sanitary sewers.

The utility easement as indicated on the plat is hereby granted for the construction and maintenance of all public utilities.

The drainage easement as indicated on the plat is hereby granted for drainage purposes.

All abutter's rights of access to or from Central Avenue over and across the north line of Lot 1 and all abutter's rights of access to or from Webb Road over and across the east line of Lot 1 are hereby granted to the City of Wichita, provided, however that Lot 1 shall have access to Central Avenue at one location over the north line of Lot 1, except the east 40 feet thereof and Lot 1 shall have access to Webb Road at one location over the south 107 feet of the east line of Lot 1, such locations to be designated by the City Engineer of Wichita, Kansas.

FlightSafety International, Inc.

ATTEST: A. L. Ueltschi, President  
 A. L. Ueltschi

Joseph E. Satterly, Notary Public  
 Joseph E. Satterly

State of New York, County of Queens, SS.

The foregoing instrument was acknowledged before me this 20th day of October, 1980, by A. L. Ueltschi, President of Flight-Safety International, Inc., a New York corporation, on behalf of the corporation.

MICHAEL P. SALERNO  
 NOTARY PUBLIC, State of New York  
 No. 41-342215 - Qual. in Queens Co.  
 Commission Expires March 28, 1981  
Michael P. Salerno, Notary Public  
 MICHAEL P. SALERNO

My Commission expires: March 20, 1981

This plat of "FOREST HILLS OFFICE PARK SECOND ADDITION", Wichita, Sedgwick County, Kansas has been submitted to and approved by the Wichita-Sedgwick County Metropolitan Area Planning Commission, Wichita, Kansas.

Dated this 9th day of OCTOBER, 1980

Wichita-Sedgwick County Metropolitan Area Planning Commission  
James L. Gardner, II Vice-Chairman  
Robert A. Lakin Secretary  
 Robert A. Lakin



This plat approved and all dedications shown hereon, if any, accepted by the Board of City Commissioners of the City of Wichita, Kansas, this 18th day of NOV, 1980.

Robert G. Knight, Mayor  
 Robert G. Knight  
Donald C. Glsick, City Clerk  
 Donald C. Glsick

This plat approved and all dedications shown hereon, if any, accepted by the Board of County Commissioners of Sedgwick County, Kansas, this 4th day of December, 1980.

Everett Patrick, Chairman  
 Everett Patrick  
Tom Scott, Commissioner  
 Tom Scott  
Donald B. Gragg, Commissioner  
 Donald B. Gragg

ATTEST: Dorothy K. White, County Clerk  
 Dorothy K. White

Entered on transfer record this 5 day of November, 1980.  
Dorothy K. White County Clerk  
 Dorothy K. White

State of Kansas, County of Sedgwick, SS.

This is to certify that this instrument was filed for record in the Register of Deeds Office, at 10:00 o'clock A.m., on the 5th day of DECEMBER, 1980.

Bette F. McCart, Register of Deeds  
 Bette F. McCart  
Pat Kettler, Deputy  
 Pat Kettler

#518026

20.00