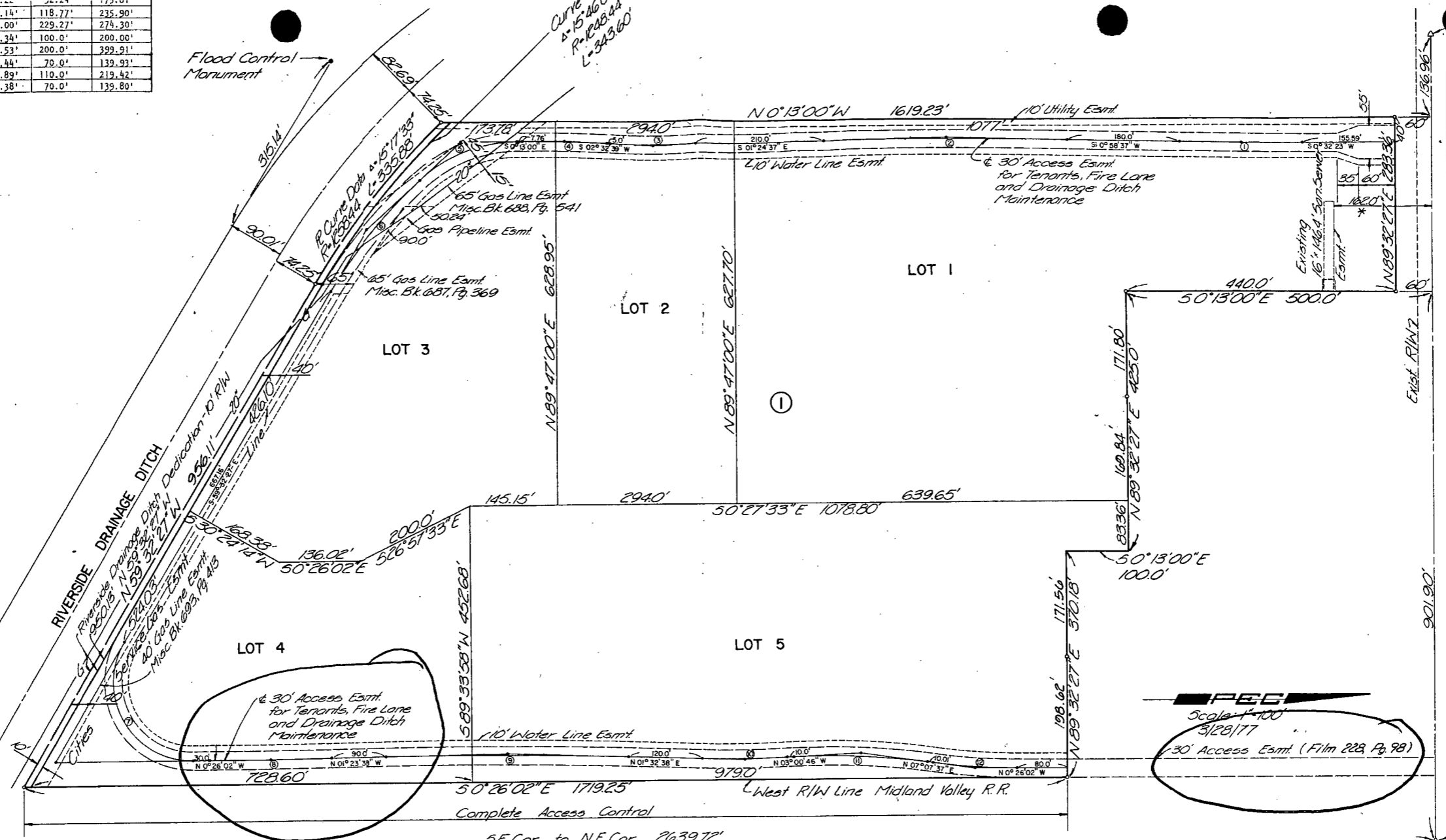


6.	16°30'00" Lt.	06°59'41"	819.14'	118.77'	235.90'
7.	120°53'35" Lt.	44°04'11"	130.00'	229.27'	274.30'
8.	00°57'36" Lt.	00°28'11"	11,936.34'	100.0'	200.00'
9.	02°56'16" Rt.	00°44'05"	7,799.53'	200.0'	399.91'
10.	04°33'24" Lt.	03°15'23"	1,759.44'	70.0'	139.93'
11.	10°08'23" Rt.	04°37'16"	1,239.89'	110.0'	219.42'
12.	07°33'39" Lt.	05°24'30"	1,059.38'	70.0'	139.89'

Flood Control Monument

Curve
R=15.06'
P=142.84'
L=343.60'

N.W. Cor. E 1/4, N.W. 1/4, Sec. 17, T28S, R1E of the 6th P.M.



VAC2013-37

Scale: 1"=100'
3/28/77
30' Access Easmt. (Film 228, Pg. 98)

REFILE
415398

* this plat has been refiled this 28 day of Nov. 1978 to show correction in Lot 1, of distance from the North line of San. Sewer Easmt. to the North line of Sec. 17, T28S, R1E, to be 162 feet, as shown.

Bette F. Mc Cart Register of Deeds.

Pat Kettler Deputy



SHEET 1 OF 2

~~B2~~ 8 19 H-1-6-16 A

This digital plat record accurately reproduces in all details the original plat filed with the Sedgwick County Register of Deeds. Digitized under the supervision of Register of Deeds Bill Meek by Sedgwick County Geographic Information Systems.

Bill Meek, Register of Deeds
Digitized rendition of original signature

REFILE
20.00
20.00