



*J. O. Michaelis*, Acting Chair  
J. O. Michaelis

*Marvin S. Kraut*, Secretary  
Marvin S. Kraut

This plat approved and all dedications shown hereon accepted by the City Council of the City of Wichita, Kansas, this 20<sup>th</sup> day of AUGUST, 2002.

At the direction of the City Council



*Chad Cherches*, City Manager  
Chad Cherches

*Pat Burnett*, City Clerk  
Pat Burnett

Reviewed in accordance with K.S.A. 58-2005 on this 12<sup>th</sup> day of August, 2002.

*Tricia L. Robello*  
Tricia L. Robello, L.S. #1246  
Deputy County Surveyor  
Sedgwick County, Kansas

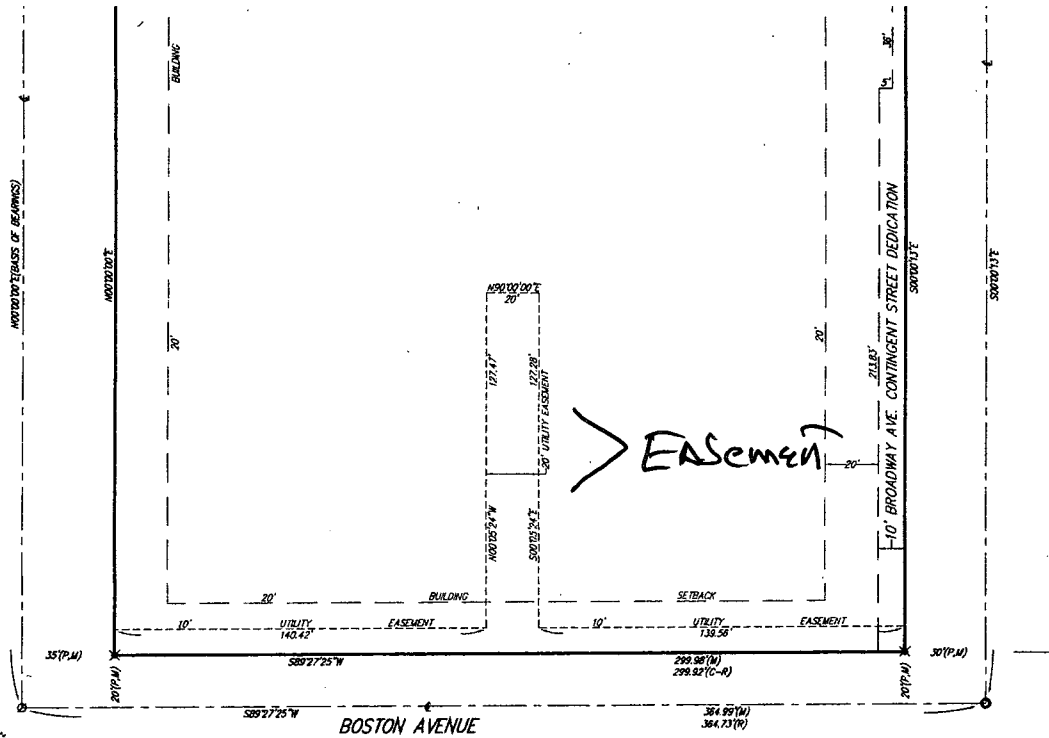
Entered on transfer record this 5<sup>th</sup> day of SEPTEMBER, 2002.

*Don Brace*, County Clerk  
Don Brace

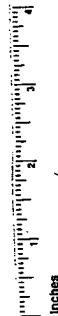
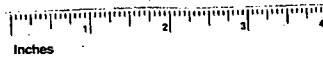
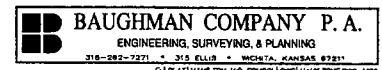
State of Kansas) SS This is to certify that this plat has been  
Sedgwick County) filed for record in the office of the Register of Deeds, this 5<sup>th</sup> day  
of September, 2002 at 11:15 o'clock P.M.; and is duly recorded.

*Bill Meek*, Register of Deeds  
Bill Meek

*Linda Kizzire*, Deputy  
Linda Kizzire



VAC 2014-03



This digital plat record accurately reproduces in all details the original plat filed with the Sedgwick County Register of Deeds. Digitized under the supervision of Register of Deeds Bill Meek by Sedgwick County Geographic Information Systems.  
*Bill Meek*, Register of Deeds  
Digitized rendition of original signature

PC140-1

# 2119190